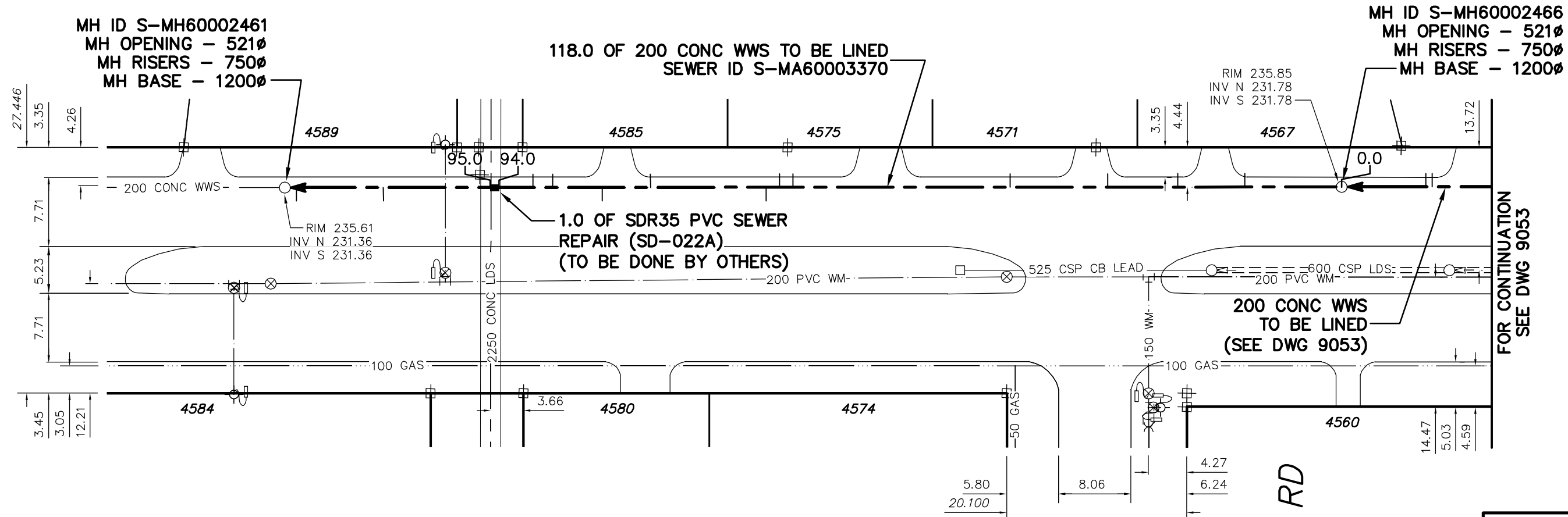




118.0 PARTIALLY DETERIORATED

OVALITY = 3.0%

# ROBLIN BOULEVARD



MH ID S-MH60002461  
 MH OPENING - 521Ø  
 MH RISERS - 750Ø  
 MH BASE - 1200Ø

118.0 OF 200 CONC WWS TO BE LINED  
 SEWER ID S-MA60003370

MH ID S-MH60002466  
 MH OPENING - 521Ø  
 MH RISERS - 750Ø  
 MH BASE - 1200Ø

1.0 OF SDR35 PVC SEWER  
 REPAIR (SD-022A)  
 (TO BE DONE BY OTHERS)

200 CONC WWS  
 TO BE LINED  
 (SEE DWG 9053)

FOR CONTINUATION  
 SEE DWG 9053

FAIRMONT RD

SEWER JUNCTION INFORMATION FROM SEWER VIDEO INSPECTION SEWER ID S-MA60003370				
DISTANCE FROM MH ID S-MH60002466				
10.80	S	100Ø	WEST	JN
18.30	S	100Ø	WEST	CNI
26.10	S	100Ø	WEST	JN
37.00	S	100Ø	WEST	JN
61.20	S	100Ø	TOP	JN
62.70	S	100Ø	WEST	JN
64.20	S	100Ø	EAST	JN
77.10	S	100Ø	WEST	CNI
82.50	S	100Ø	EAST	JN
88.00	S	100Ø	TOP	CNI
90.20	S	100Ø	WEST	JN
114.60	S	100Ø	TOP	JN
116.60	S	100Ø	EAST	CXI

ENGINEER'S SEAL

**ORIGINAL  
SIGNED BY  
S.R.J.  
COURNOYER  
09/09/28**

BID OPPORTUNITY: 567-2009  
 FILENAME : 9054.dwg  
 PLOT DATE : 2009 09 28

**METRIC**  
 WHOLE NUMBERS INDICATE MILLIMETRES  
 DECIMALIZED NUMBERS INDICATE METRES

B.M. ELEV.	FIELD BOOK #:	<b>CITY OF WINNIPEG WATER AND WASTE ENGINEERING DIVISION</b>		<b>THE CITY OF WINNIPEG WATER AND WASTE DEPARTMENT</b>	
POSTED TO LBIS		DESIGNED BY: SC	CHECKED BY: SC	2009 SEWER RENEWALS BY CIPP LININGS, CONTRACT 15	
		DRAWN BY: CJH/WKT	APPROVED BY: KZ	<b>ROBLIN BOULEVARD</b>	
		HOR. SCALE: 1:500	RELEASED FOR CONSTRUCTION	1ST MH S OF MARLTON CRESCENT TO 1ST MH S OF FAIRMONT ROAD	
		VERTICAL		SHEET <b>34</b> OF <b>45</b>	
NO.	REVISIONS	DATE	BY	CITY DRAWING NUMBER	
		2009 09 25		<b>9054</b>	