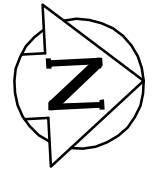
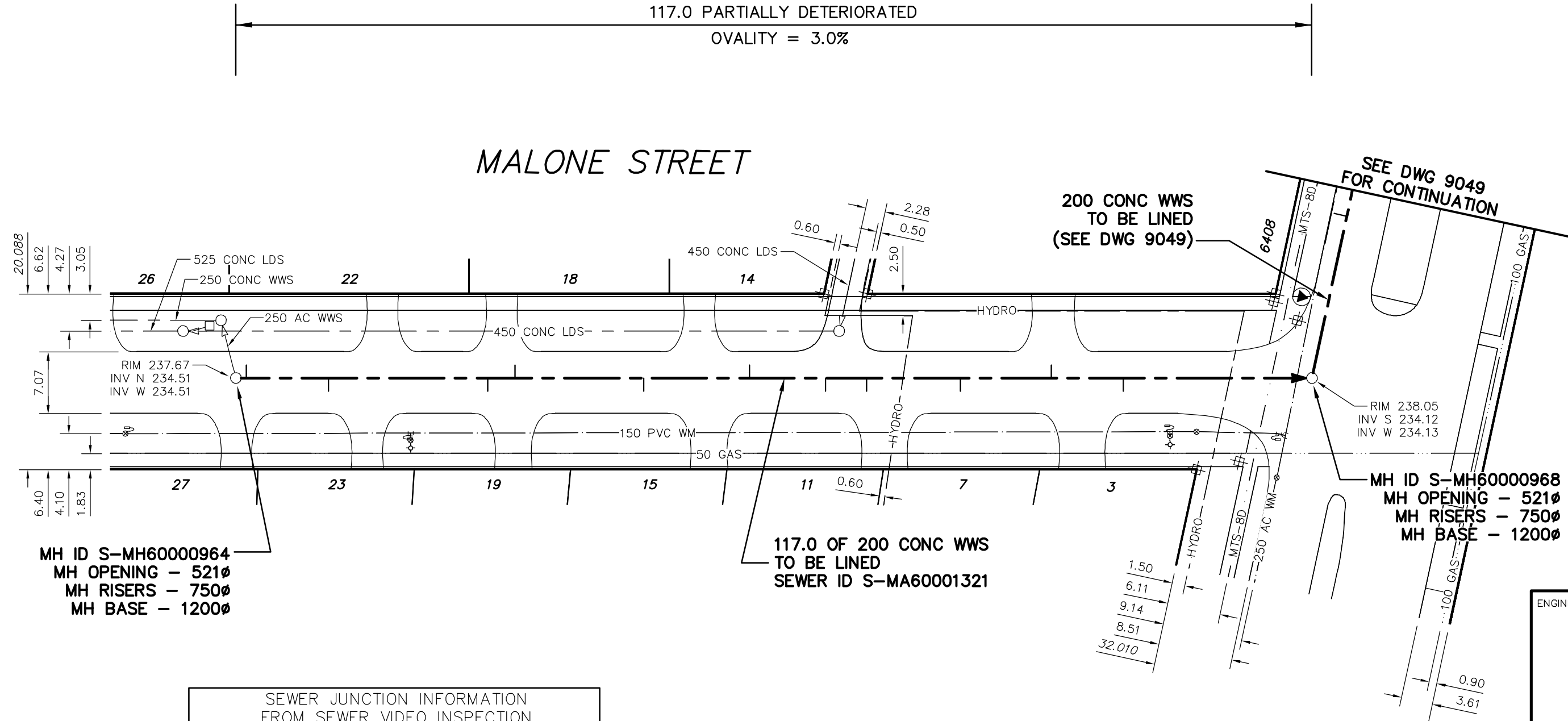


117.0 PARTIALLY DETERIORATED
OVALITY = 3.0%



MALONE STREET



MH ID S-MH60000964
MH OPENING - 521Ø
MH RISERS - 750Ø
MH BASE - 1200Ø

117.0 OF 200 CONC WWS
TO BE LINED
SEWER ID S-MA60001321

MH ID S-MH60000968
MH OPENING - 521Ø
MH RISERS - 750Ø
MH BASE - 1200Ø

SEWER JUNCTION INFORMATION
FROM SEWER VIDEO INSPECTION
SEWER ID S-MA60001321

DISTANCE FROM MH ID S-MH60000964				
1.2	N	100Ø	WEST	CN
10.6	N	150Ø	EAST	CNI
28.8	N	150Ø	EAST	CXI
31.9	N	150Ø	WEST	CN
46.6	N	150Ø	EAST	CNI
58.7	N	150Ø	WEST	CN
67.4	N	150Ø	EAST	CNI
72.1	N	150Ø	EAST	CNI
82.8	N	150Ø	EAST	CNI
93.2	N	150Ø	WEST	CN
101.4	N	150Ø	EAST	CXI

ENGINEER'S SEAL

**ORIGINAL
SIGNED BY
S.R.J.
COURNOYER
09/09/28**

METRIC
WHOLE NUMBERS INDICATE MILLIMETRES
DECIMALIZED NUMBERS INDICATE METRES

BID OPPORTUNITY: 567-2009
FILENAME : 9039.dwg
PLOT DATE : 2009 09 28

B.M. ELEV.		FIELD BOOK #:		CITY OF WINNIPEG WATER AND WASTE ENGINEERING DIVISION		THE CITY OF WINNIPEG WATER AND WASTE DEPARTMENT	
POSTED TO LBS							
DESIGNED BY	SC	CHECKED BY	SC	2009 SEWER RENEWALS BY CIPP LININGS, CONTRACT 15 MALONE STREET 1ST MH S OF ROBLIN BOULEVARD TO MH AT ROBLIN BOULEVARD		SHEET 19 OF 45 CITY DRAWING NUMBER 9039	
DRAWN BY	CJH	APPROVED BY	KZ				
HOR. SCALE 1:500		RELEASED FOR CONSTRUCTION		DATE		DATE	
VERTICAL		DATE		2009 09 25			
NO.	REVISIONS	DATE	BY				