

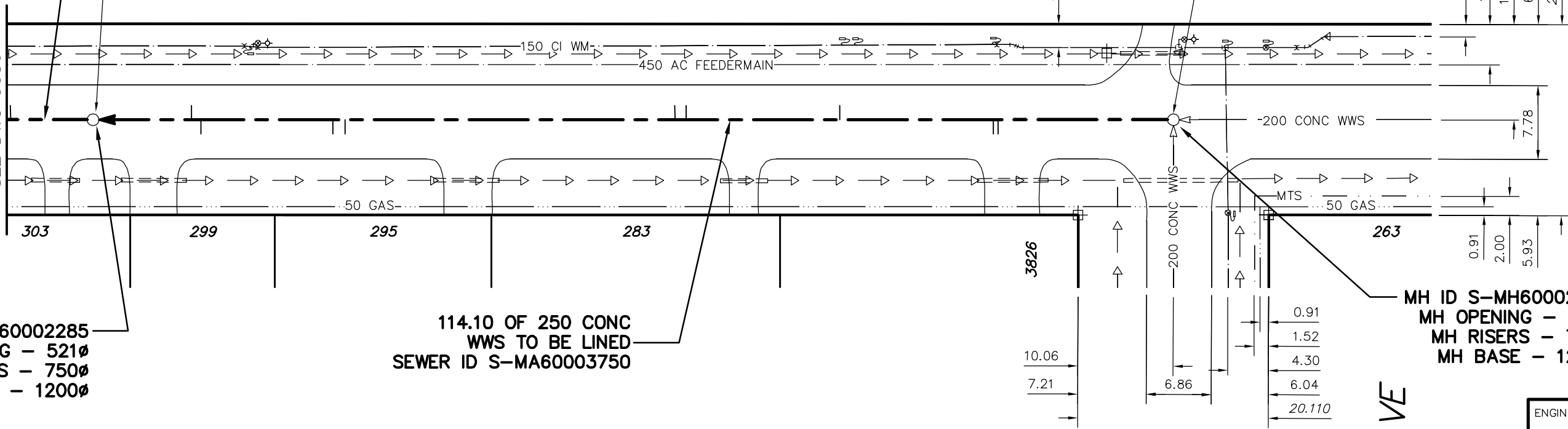
HANEY STREET

200 CONC WWS TO BE LINED (SEE DWG 9036)

RIM 235.82
INV N 231.13
INV S 231.13

RIM 235.82
INV N 231.50
INV E 231.41
INV S 231.50

FOR CONTINUATION SEE DWG 9036



MH ID S-MH60002285
MH OPENING - 521Ø
MH RISERS - 750Ø
MH BASE - 1200Ø

114.10 OF 250 CONC WWS TO BE LINED
SEWER ID S-MA60003750

MH ID S-MH60002708
MH OPENING - 521Ø
MH RISERS - 750Ø
MH BASE - 1200Ø

SEWER JUNCTION INFORMATION FROM SEWER VIDEO INSPECTION SEWER ID S-MA60003750				
DISTANCE FROM MH ID S-MH60002708				
18.5	S	100Ø	EAST	CN
19.0	S	100Ø	EAST	CN
35.2	S	150Ø	TOP	CN
51.4	S	100Ø	TOP	CN
52.6	S	100Ø	TOP	CN
87.4	S	150Ø	EAST	CN
88.7	S	100Ø	EAST	CN
102.6	S	150Ø	EAST	CN
103.6	S	150Ø	TOP	CN

ENGINEER'S SEAL

ORIGINAL SIGNED BY S.R.J. COURNOYER 09/09/28

BID OPPORTUNITY: 567-2009
FILENAME : 9035.dwg
PLOT DATE : 2009 09 28

METRIC
WHOLE NUMBERS INDICATE MILLIMETRES
DECIMALIZED NUMBERS INDICATE METRES

B.M. ELEV.	FIELD BOOK #:	CITY OF WINNIPEG WATER AND WASTE ENGINEERING DIVISION		THE CITY OF WINNIPEG WATER AND WASTE DEPARTMENT	
POSTED TO LBIS		DESIGNED BY: SC	CHECKED BY: SC	2009 SEWER RENEWALS BY CIPP LININGS, CONTRACT 15	
		DRAWN BY: C.J.H.	APPROVED BY: K.Z.	HANEY STREET	
		HOR. SCALE: 1:500	RELEASED FOR CONSTRUCTION	MH AT BATCHELOR AVENUE TO 1ST MH S OF BATCHELOR AVENUE	
		VERTICAL		SHEET 15 OF 45	
NO.	REVISIONS	DATE	BY	CITY DRAWING NUMBER	
		2009 09 25		9035	