

46.90 PARTIALLY DETERIORATED
OVALITY = 3.0%

56.0 PARTIALLY DETERIORATED
OVALITY = 3.0%

12.0 FULLY DETERIORATED
OVALITY = 5.0%

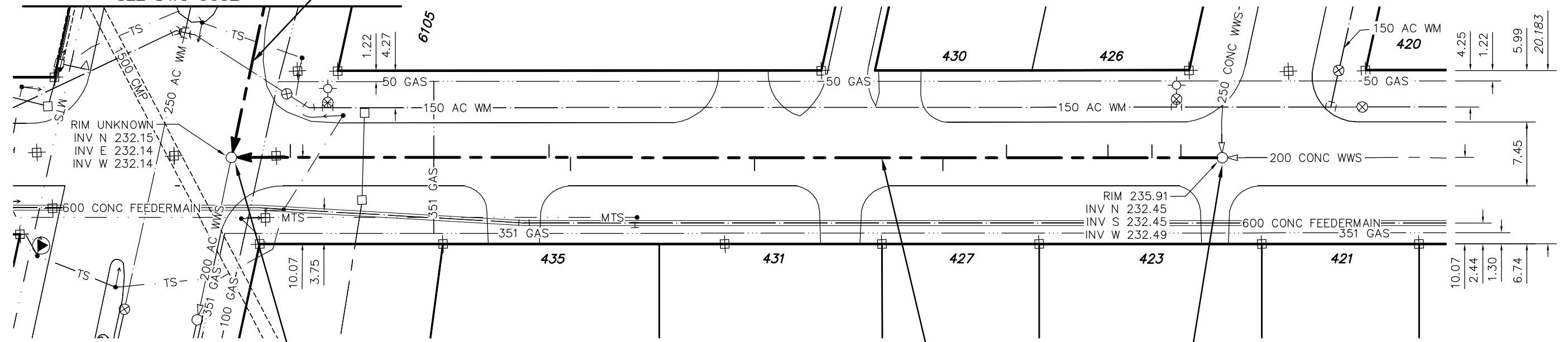


KINKORA DR

BERKLEY STREET

FOR CONTINUATION
SEE DWG 9052

200 CONC WWS TO BE LINED
(SEE DWG 9052)



(FOR DIMENSIONS ON ROBLIN BLVD SEE DWG 9052)

MH ID S-MH60001040
MH OPENING - 521Ø
MH RISERS - 750Ø
MH BASE - 1200Ø

114.90 OF 200 CONC WWS TO BE LINED
SEWER ID S-MA60001407

MH ID S-MH60001049
MH OPENING - 521Ø
MH RISERS - 750Ø
MH BASE - 1200Ø

SEWER JUNCTION INFORMATION FROM SEWER VIDEO INSPECTION SEWER ID S-MA60001407				
DISTANCE FROM MH ID S-MH60001049				
4.80	S	150Ø	TOP	JN
8.20	S	150Ø	WEST	CN
13.30	S	150Ø	WEST	CN
25.10	S	150Ø	WEST	CNI
32.50	S	150Ø	EAST	CN
54.40	S	150Ø	EAST	CX
75.80	S	150Ø	EAST	CN
78.30	S	150Ø	WEST	CN
108.40	S	150Ø	EAST	CN

ENGINEER'S SEAL

**ORIGINAL
SIGNED BY
S.R.J.
COURNOYER
09/09/28**

BID OPPORTUNITY: 567-2009
FILENAME : 9023.dwg
PLOT DATE : 2009 09 28

METRIC
WHOLE NUMBERS INDICATE MILLIMETRES
DECIMALIZED NUMBERS INDICATE METRES

B.M. ELEV.	FIELD BOOK #:	CITY OF WINNIPEG WATER AND WASTE ENGINEERING DIVISION		THE CITY OF WINNIPEG WATER AND WASTE DEPARTMENT	
POSTED TO LBIS		DESIGNED BY: SC	CHECKED BY: SC	2009 SEWER RENEWALS BY CIPP LININGS, CONTRACT 15	
		DRAWN BY: CJH/WKT	APPROVED BY: KZ	BERKLEY STREET	
		HOR. SCALE: 1:500	RELEASED FOR CONSTRUCTION	MH AT KINKORA DRIVE TO MH AT ROBLIN BOULEVARD	
		VERTICAL		SHEET 3 OF 45	
NO.	REVISIONS	DATE	BY	CITY DRAWING NUMBER	
		2009 09 25		9023	