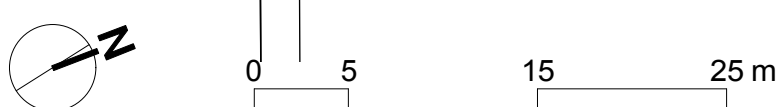
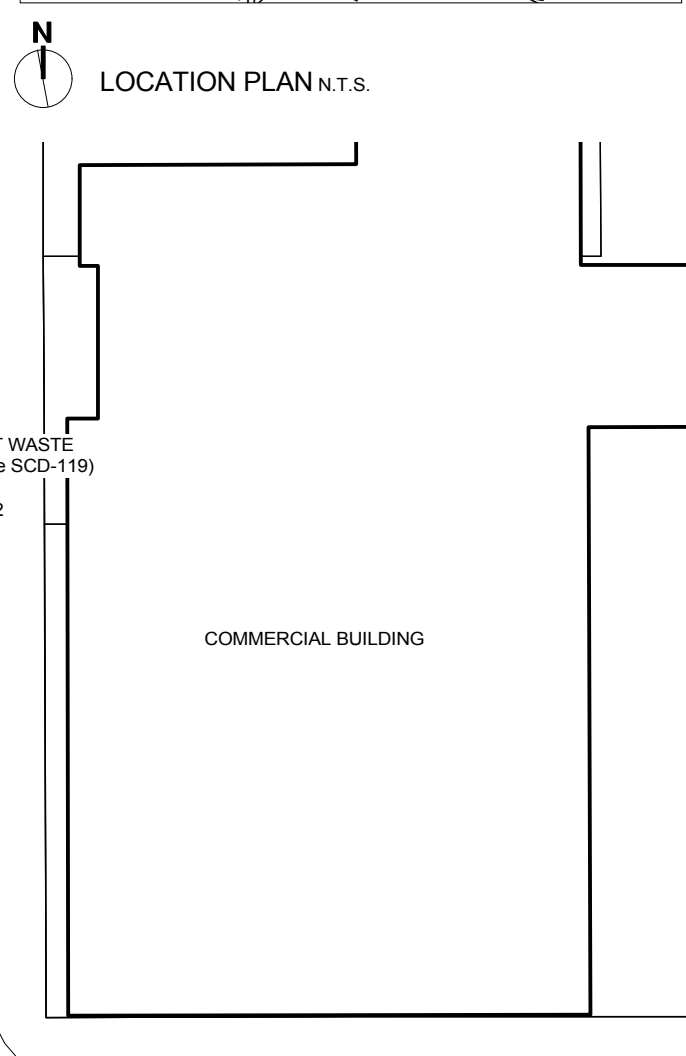
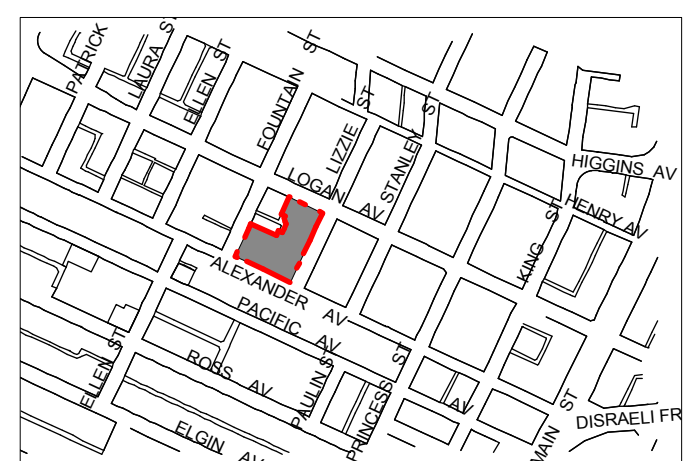
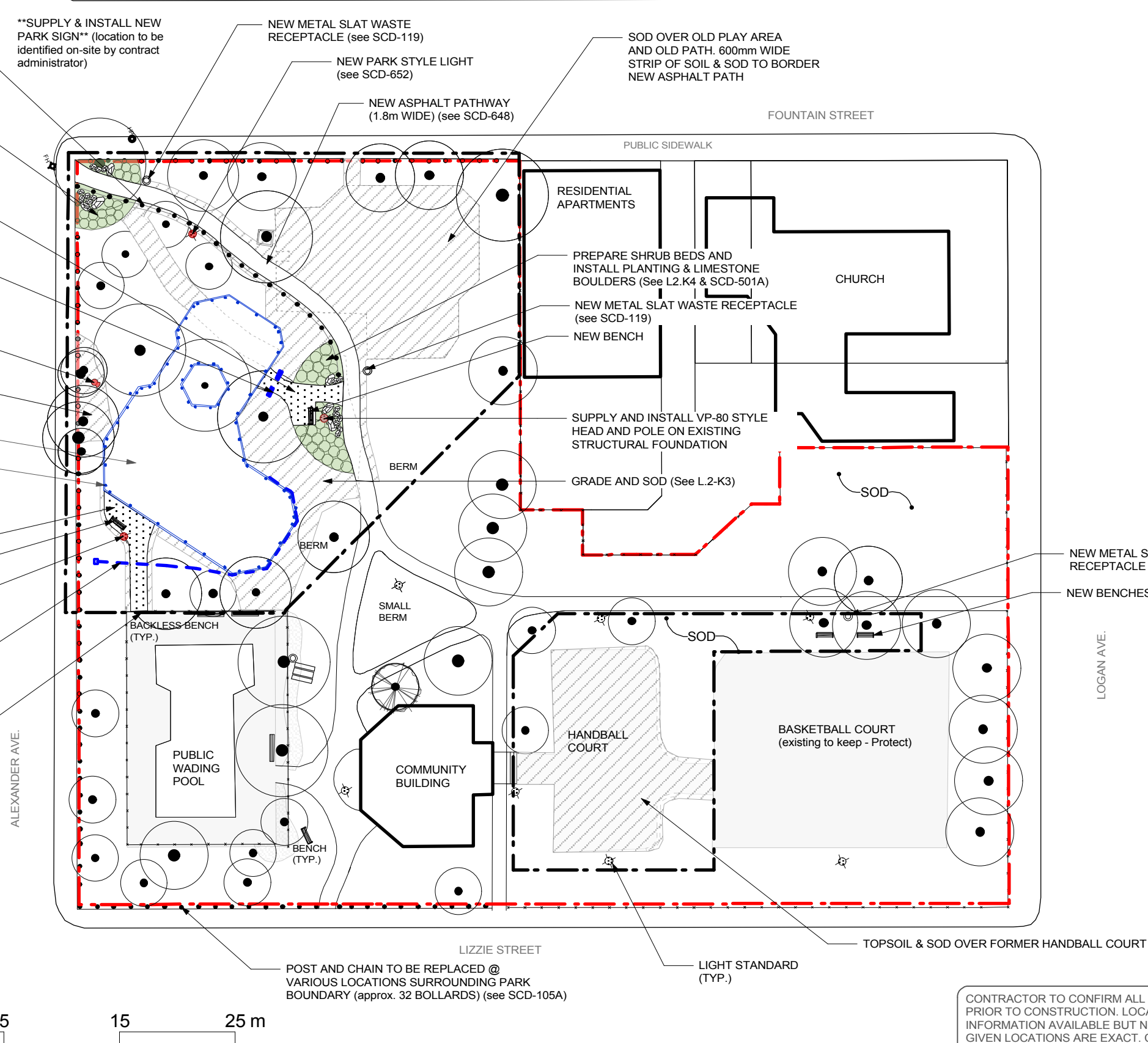


- NEW POST AND CHAIN FENCING ALONG PATH (see SCD-105A) (approx. 20)
- PREPARE SHRUB BEDS AND INSTALL PLANTING & LIMESTONE BOULDERS (See L.2-K4 & SCD-501A)
- NEW GRANULAR PATH AND SEATING AREA - RAMP UP TO TIMBER EDGING (See L.2-K3 & SCD-645A)
- SUPPLY AND INSTALL SUBSURFACE DRAINAGE (MULTI-FLOW) UNDER PATH (see L.2-K3)
- RELOCATE EXISTING FLOOD LIGHT, INCLUDING NEW STRUCTURAL FOUNDATION - DIRECT TOWARDS PLAY AREA (see SCD-652)
- SOIL AND SOD OVER FORMER SHRUB BED
- NEW PLAY AREA (work to be completed by others - Play equipment Contractor)
- TIMBER EDGING (by others - Play equipment Contractor)
- NEW GRANULAR PATH AND SEATING AREA - RAMP UP TO TIMBER EDGING (See L.2-K3 & SCD-645A)
- NEW BENCH
- NEW PARK STYLE LIGHT (see SCD-652)
- SUBSURFACE DRAINAGE (MULTI-FLOW) AND EMITTER (see L.2-K3)
- NEW CHAINLINK FENCE GATE (w/ padlock)



CONTRACTOR TO CONFIRM ALL DIMENSIONS AND REPORT ANY DISCREPANCIES TO CONTRACT ADMINISTRATOR PRIOR TO CONSTRUCTION. LOCATION OF UNDERGROUND STRUCTURES AS SHOWN ARE BASED ON THE BEST INFORMATION AVAILABLE BUT NO GUARANTEE IS GIVEN THAT ALL EXISTING UTILITIES ARE SHOWN OR THAT THE GIVEN LOCATIONS ARE EXACT. CONFIRMATION OF EXISTENCE AND EXACT LOCATION OF ALL SERVICES MUST BE OBTAINED FROM THE INDIVIDUAL UTILITIES BEFORE PROCEEDING WITH CONSTRUCTION.

<p>THE CITY OF WINNIPEG Planning, Property and Development Department Planning and Land Use Division Unit 15 - 30 Fort Street, Winnipeg, MB, (R3C 4X5)</p>	DESIGNED BY	CHECKED BY	MANAGER, PARK AND OPEN SPACES	DATE	DRAWING TITLE LIZZIE PLAYGROUND PROPOSED - SITE WORKS	DRAWING NO. L.2-K2
	DRAWN BY I.L.	APPROVED BY		DATE		
	HORIZ. SCALE		MANAGER, PLANNING AND LAND USE DIVISION	DATE	SITE ADDRESS 242 Lizzie	BID OPPORTUNITY NO. 557-2009
	VERT. SCALE 1:500			DATE		
	DATE JULY 09					