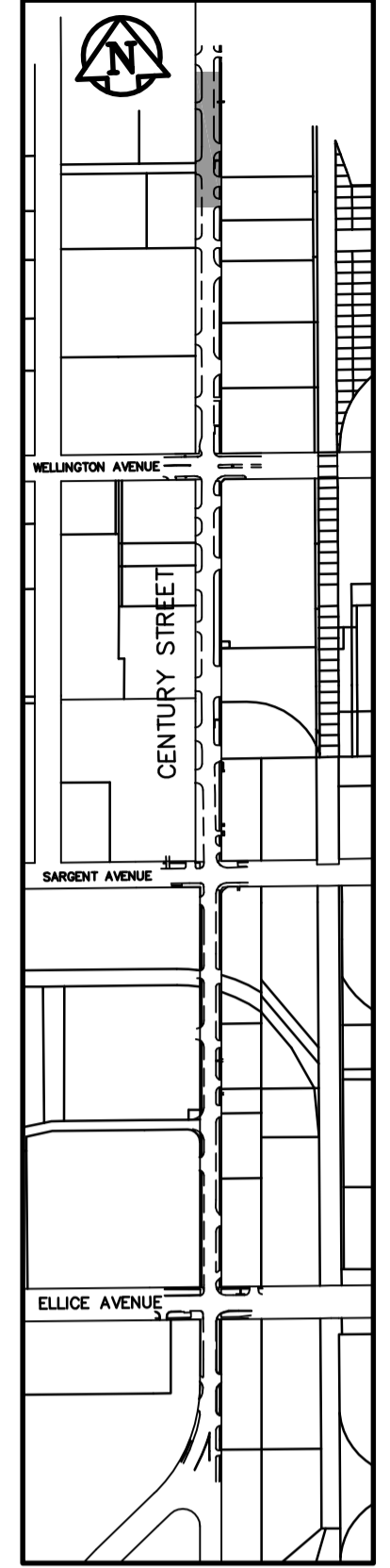
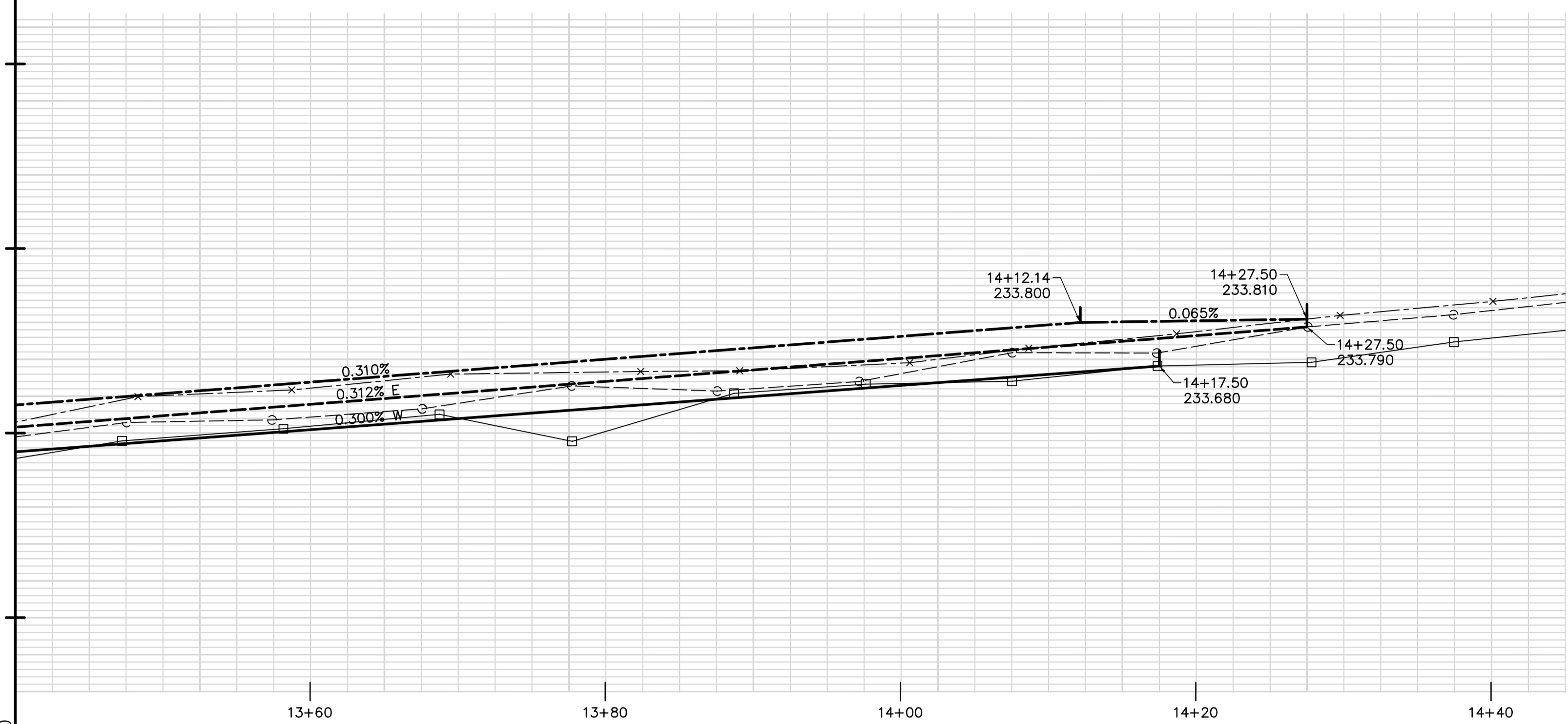


234.500
234.000
233.500
233.000



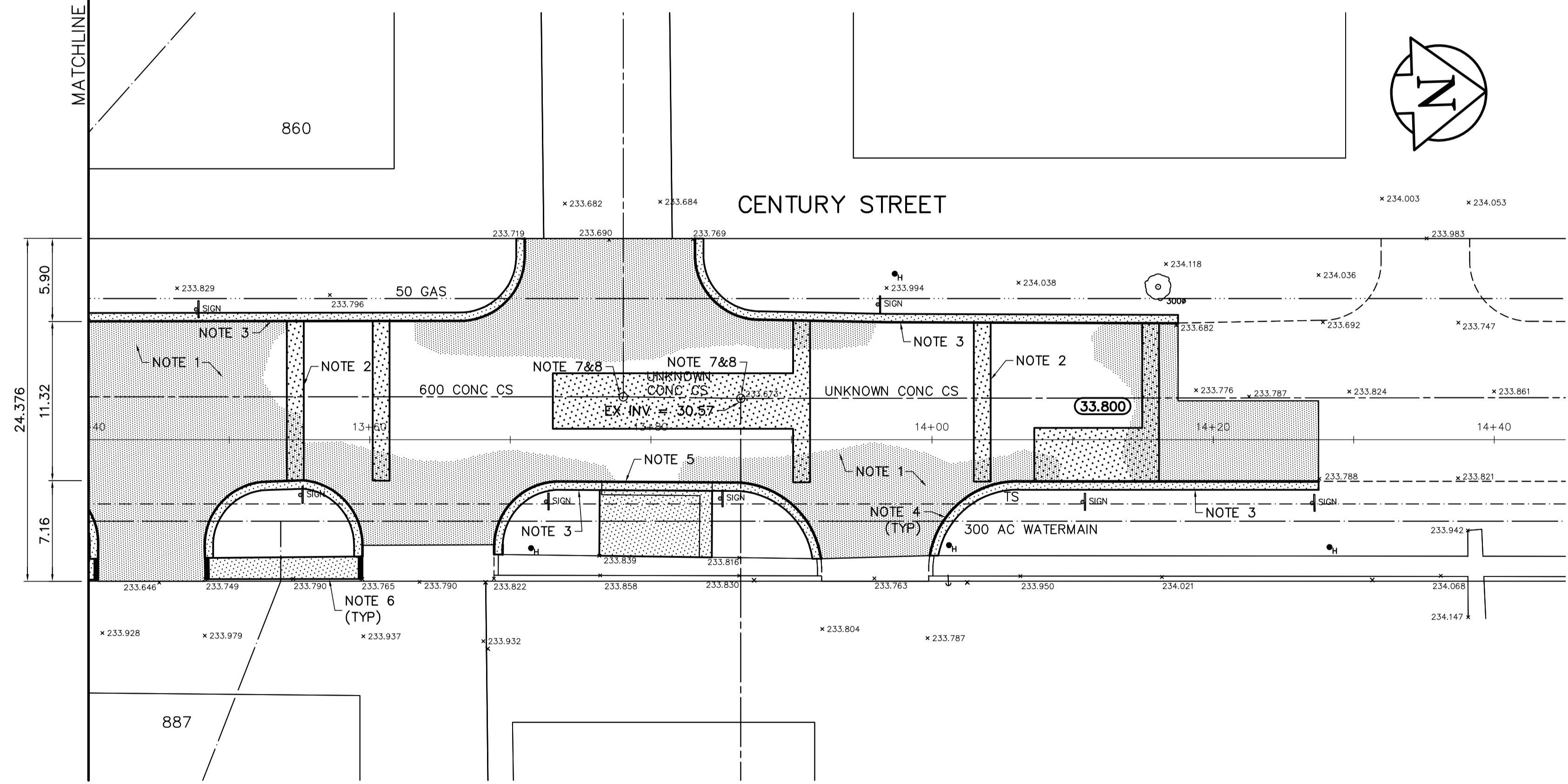
KEY PLAN

REFERENCE NOTES:

- A. BASELINE IS CENTERED BETWEEN WEST AND EAST PROPERTY LINES OF CENTURY STREET FROM ELLICE AVENUE TO SARGENT AVENUE
- B. LEGAL PLAN - L.B.I.S.
- C. AECOM FIELD BOOK No. 4607
- D. PAVEMENT DIMENSIONS ARE TO BACK OF CURB
- E. ALL WORK TO CONFORM TO CITY OF WINNIPEG STANDARD CONSTRUCTION SPECIFICATIONS

CONSTRUCTION NOTES:

- 1. PLANE EXISTING ASPHALT AND CONSTRUCT NEW 80mm ASPHALTIC CONCRETE OVERLAY
- 2. CONSTRUCT NEW 200mm PLAIN DOWELLED CONCRETE PAVEMENT
- 3. CONSTRUCT NEW MONOLITHIC CONCRETE SPLASH STRIP (150mm HT)
- 4. CONSTRUCT NEW MONOLITHIC CONCRETE MODIFIED SPLASH STRIP
- 5. REMOVE EXISTING PATIO BLOCKS AND CONSTRUCT NEW CONCRETE SIDEWALK
- 6. RENEW EXISTING CONCRETE SIDEWALK
- 7. ADJUST EXISTING CATCH BASIN/MANHOLE TO GRADE
- 8. INSTALL NEW CAST IRON RISER RING
- 9. ADJUST EXISTING WATER VALVE TO GRADE



AECOM

© 2008 EARTH TECH (CANADA) INC. ALL RIGHTS RESERVED. THIS DOCUMENT IS PROTECTED BY COPYRIGHT LAW AND MAY NOT BE USED, REPRODUCED OR MODIFIED IN ANY MANNER OR FOR ANY PURPOSE EXCEPT WITH THE WRITTEN PERMISSION OF EARTH TECH (CANADA) INC. DOING BUSINESS AS AECOM (AECOM) OR A PARTY TO WHICH ITS COPYRIGHT HAS BEEN ASSIGNED. AECOM ACCEPTS NO RESPONSIBILITY, AND DENIES ANY LIABILITY WHATSOEVER, TO ANY PARTY THAT USES, REPRODUCES, MODIFIES, OR RELIES ON THIS DOCUMENT WITHOUT AECOM'S EXPRESS WRITTEN CONSENT.

APECA
Certificate of Authorization
Earth Tech Canada Inc.
No. 730 Expiry: April 30, 2009

METRIC
WHOLE NUMBERS INDICATE MILLIMETRES
DECIMALIZED NUMBERS INDICATE METRES

EXISTING	LEGEND - PLAN	PROPOSED	EXISTING	LEGEND - PLAN	PROPOSED	EXISTING	LEGEND - PROFILE	PROPOSED
	WATERMAIN			HYDRO M.T.S.			WEST GUTTER	
	VALVE			CONCRETE ASPHALT			EAST GUTTER	
	LAND DRAINAGE SEWER			PROPERTY LINE			SURVEY BAR	
	WASTEWATER SEWER			ELEVATION			TREE	
	MANHOLE			SIDEWALK RAMP			CONCRETE SIDEWALK FENCE	
	CATCH BASIN							
	CURB INLET							
	JUNCTIONS							
	CULVERT							
	GAS							

LOCATION APPROVED UNDERGROUND STRUCTURES
SUPV. U/G STRUCTURES DATE COMMITTEE
NOTE:
LOCATION OF UNDERGROUND STRUCTURES AS SHOWN ARE BASED ON THE BEST INFORMATION AVAILABLE BUT NO GUARANTEE IS GIVEN THAT ALL EXISTING UTILITIES ARE SHOWN OR THAT THE GIVEN LOCATIONS ARE EXACT. CONFIRMATION OF EXISTENCE AND EXACT LOCATION OF ALL SERVICES MUST BE OBTAINED FROM THE INDIVIDUAL UTILITIES BEFORE PROCEEDING WITH CONSTRUCTION.

B.M. 38-072 N.E. Cor. Ellice Ave. & Century St. 1.05 m dia. x 2.4 m Iron pipe, 4.8 m S. of N.L. of ELEV. 234.137
Ellice Ave. & on E.L. of Century St.

DESIGNED BY	RC	CHECKED BY	KWR
DRAWN BY	SS	APPROVED BY	
0 ISSUED FOR TENDER	02/26/09	KWR	
A ISSUED FOR REVIEW	02/11/09	KWR	
NO. REVISIONS	DATE	BY	
DATE	2008/11/17	DATE	

ENGINEER'S SEAL
PROVINCE OF MANITOBA
REGISTERED PROFESSIONAL ENGINEER
K.W. RAE
2006/02/20

THE CITY OF WINNIPEG
PUBLIC WORKS DEPARTMENT
ENGINEERING DIVISION
CENTURY STREET - 130m SOUTH OF ELLICE AVENUE TO 300m NORTH OF WELLINGTON AVENUE
CONCRETE REPAIRS AND ASPHALT RESURFACING
CITY DRAWING NUMBER P-3298-10
SHEET 9 OF 9
PLAN PROFILE
STA 13+40 TO 320m NORTH OF WELLINGTON AVE