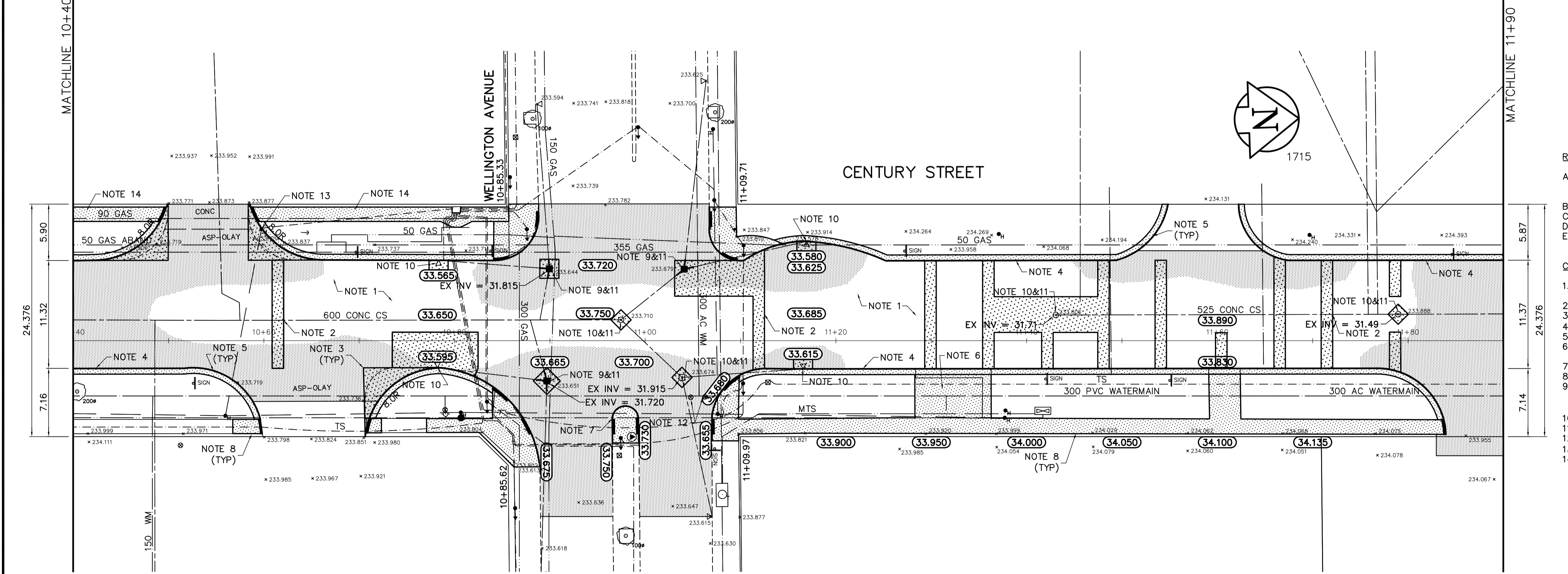


KEY PLAN



REFERENCE NOTES:

- A. BASELINE IS CENTERED BETWEEN WEST AND EAST PROPERTY LINES OF CENTURY STREET FROM ELLICE AVENUE TO SARGENT AVENUE
- B. LEGAL PLAN - L.B.I.S.
- C. AECOM FIELD BOOK No. 4607
- D. PAVEMENT DIMENSIONS ARE TO BACK OF CURB
- E. ALL WORK TO CONFORM TO CITY OF WINNIPEG STANDARD CONSTRUCTION SPECIFICATIONS

CONSTRUCTION NOTES:

1. PLANE EXISTING ASPHALT AND CONSTRUCT NEW 80mm ASPHALTIC CONCRETE OVERLAY
2. CONSTRUCT NEW 200mm PLAIN DOWELLED CONCRETE PAVEMENT
3. CONSTRUCT NEW 200mm REINFORCED CONCRETE PAVEMENT
4. CONSTRUCT NEW MONOLITHIC CONCRETE SPLASH STRIP (150mm HT)
5. CONSTRUCT NEW MONOLITHIC CONCRETE MODIFIED SPLASH STRIP
6. REMOVE EXISTING PATIO BLOCKS AND CONSTRUCT NEW CONCRETE SIDEWALK
7. CONSTRUCT NEW MONOLITHIC CONCRETE BULLNOSE
8. RENEW EXISTING CONCRETE SIDEWALK
9. REMOVE EXISTING CATCH BASIN AND INSTALL NEW CATCH BASIN (SD-025) C/W CLOSED COVER AND CONNECT NEW 250mm LEAD TO EXISTING LEAD
10. ADJUST EXISTING CATCH BASIN/MANHOLE TO GRADE
11. INSTALL NEW CAST IRON RISER RING
12. ADJUST EXISTING WATER VALVE TO GRADE
13. RELOCATE EXISTING HYDRO POLE (BY MANITOBA HYDRO)
14. CONSTRUCT NEW CONCRETE SIDEWALK

AECOM

© 2008 EARTH TECH (CANADA) INC. ALL RIGHTS RESERVED. THIS DOCUMENT IS PROTECTED BY COPYRIGHT LAW AND MAY NOT BE USED, REPRODUCED OR MODIFIED IN ANY MANNER OR FOR ANY PURPOSE EXCEPT WITH THE WRITTEN PERMISSION OF EARTH TECH (CANADA) INC. DOING BUSINESS AS AECOM ("AECOM") OR A PARTY TO WHICH ITS COPYRIGHT HAS BEEN ASSIGNED. AECOM ACCEPTS NO RESPONSIBILITY, AND DENIES ANY LIABILITY WHATSOEVER, TO ANY PARTY THAT USES, REPRODUCES, MODIFIES, OR RELIES ON THIS DOCUMENT WITHOUT AECOM'S EXPRESS WRITTEN CONSENT.

APECA
 Certificate of Authorization
 Earth Tech Canada Inc.
 No. 730 Expiry: April 30, 2009

METRIC
 WHOLE NUMBERS INDICATE MILLIMETRES
 DECIMALIZED NUMBERS INDICATE METRES

EXISTING	LEGEND - PLAN	PROPOSED	EXISTING	LEGEND - PLAN	PROPOSED	EXISTING	LEGEND - PROFILE	PROPOSED
150 mm W.M.	WATERMAIN	150 mm W.M.	---	HYDRO	---	---	Q PROFILE	---
300 mm L.D.S.	LAND DRAINAGE SEWER	300 mm L.D.S.	---	CONCRETE	---	---	WEST GUTTER	---
250 mm W.W.S.	WASTEWATER SEWER	250 mm W.W.S.	---	ASPHALT	---	---	EAST GUTTER	---
---	MANHOLE	---	---	PROPERTY LINE	---	---	---	---
---	CATCH BASIN	---	---	SURVEY BAR	---	---	---	---
---	CURB INLET	---	---	ELEVATION	(32.750)	---	---	---
---	JUNCTIONS	---	---	TREE	---	---	---	---
---	CULVERT	---	---	SIDEWALK RAMP	---	---	---	---
---	GAS	---	---	CONCRETE SIDEWALK	---	---	---	---
---	---	---	---	FENCE	---	---	---	---

LOCATION APPROVED UNDERGROUND STRUCTURES
 SUPV. U/G STRUCTURES DATE COMMITTEE
 NOTE:
 LOCATION OF UNDERGROUND STRUCTURES AS SHOWN ARE BASED ON THE BEST INFORMATION AVAILABLE BUT NO GUARANTEE IS GIVEN THAT ALL EXISTING UTILITIES ARE SHOWN OR THAT THE GIVEN LOCATIONS ARE EXACT. CONFIRMATION OF EXISTENCE AND EXACT LOCATION OF ALL SERVICES MUST BE OBTAINED FROM THE INDIVIDUAL UTILITIES BEFORE PROCEEDING WITH CONSTRUCTION.

B.M. 38-072 N.E. Cor. Ellice Ave. & Century St. Tabl. on top of 0.05 m dia. x 2.4 m iron pipe, 4.8 m S. of N.L. of ELEV. 234.137 Ellice Ave. & on E.L. of Century St.

NO.	REVISIONS	DATE	BY
0	ISSUED FOR TENDER	02/26/09	KWR
A	ISSUED FOR REVIEW	02/11/09	KWR

AECOM

DESIGNED BY	RC	CHECKED BY	KWR
DRAWN BY	SS	APPROVED BY	
HOR. SCALE:	1:250	RELEASED FOR CONSTRUCTION BY:	
VERTICAL:	1:10	DATE	2008/11/17

ENGINEER'S SEAL
 PROVINCE OF MANITOBA
 ORIGINAL SIGNED BY
K.W. RAE
 REGISTERED PROFESSIONAL ENGINEER
 2006/02/27

THE CITY OF WINNIPEG
 PUBLIC WORKS DEPARTMENT
 ENGINEERING DIVISION

Winnipeg

CENTURY STREET - 130m SOUTH OF ELLICE AVENUE TO 300m NORTH OF WELLINGTON AVENUE
 CONCRETE REPAIRS AND ASPHALT RESURFACING

CITY DRAWING NUMBER P-3298-08
 SHEET 7 OF 9

PLAN PROFILE
 STA 10+40 TO STA 11+90

CONSULTANT DRAWING NO. CT07