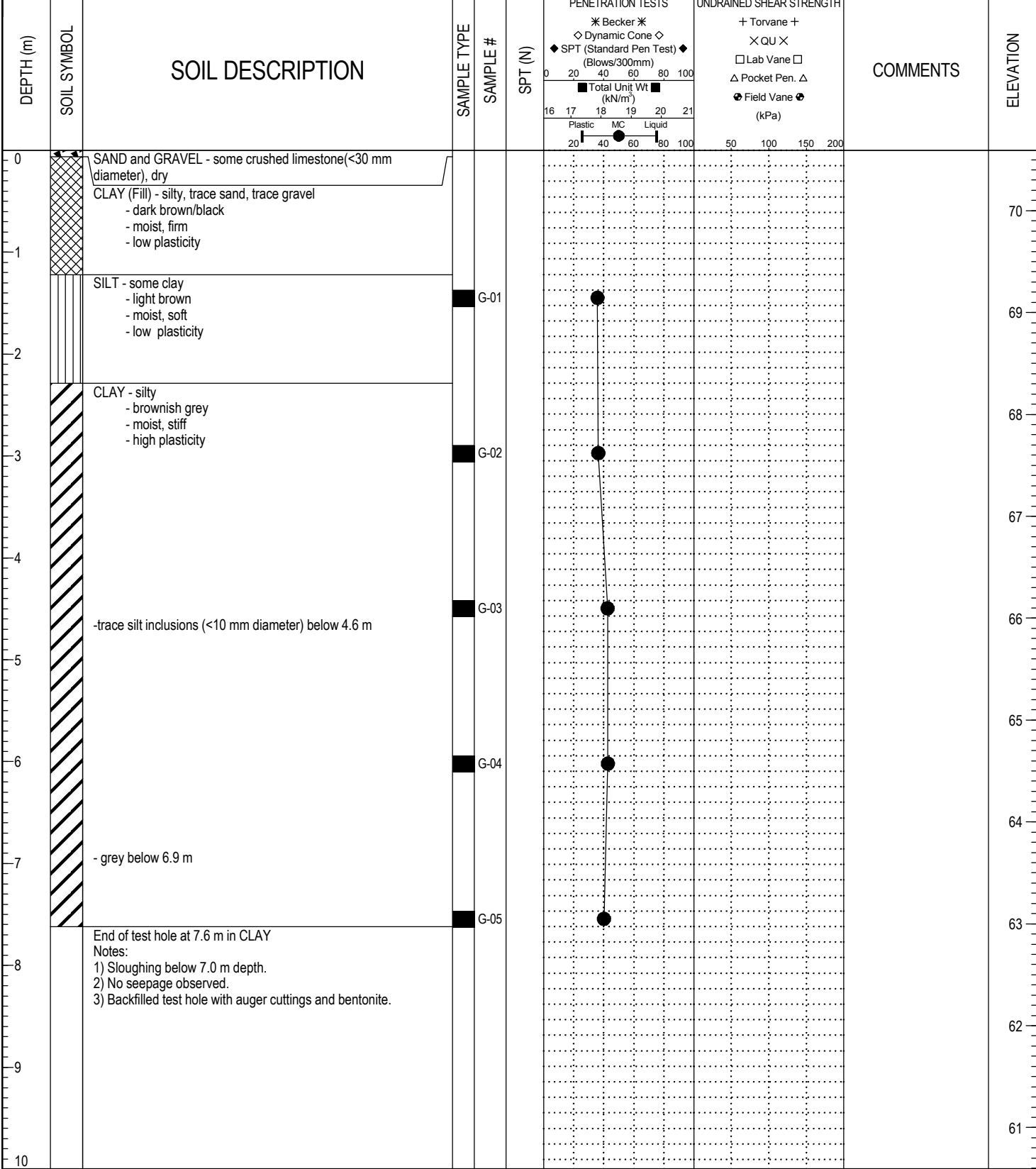


**APPENDIX A**  
**TEST HOLE LOGS**

PROJECT: Alexander Bannatyne Contract S      CLIENT: City of Winnipeg-WWD      TESTHOLE NO: 09-01  
 LOCATION: Higgins Ave and Lizzie St. Approximate N - 5529855 E - 633509      PROJECT NO.: D265-177-05-01  
 CONTRACTOR: Paddock Drilling Ltd.      METHOD: 125 mm ø Solid Stem Auger, Acker MP5      ELEVATION (m): 70.59

SAMPLE TYPE    GRAB    SHELBY TUBE    SPLIT SPOON    BULK    NO RECOVERY    CORE



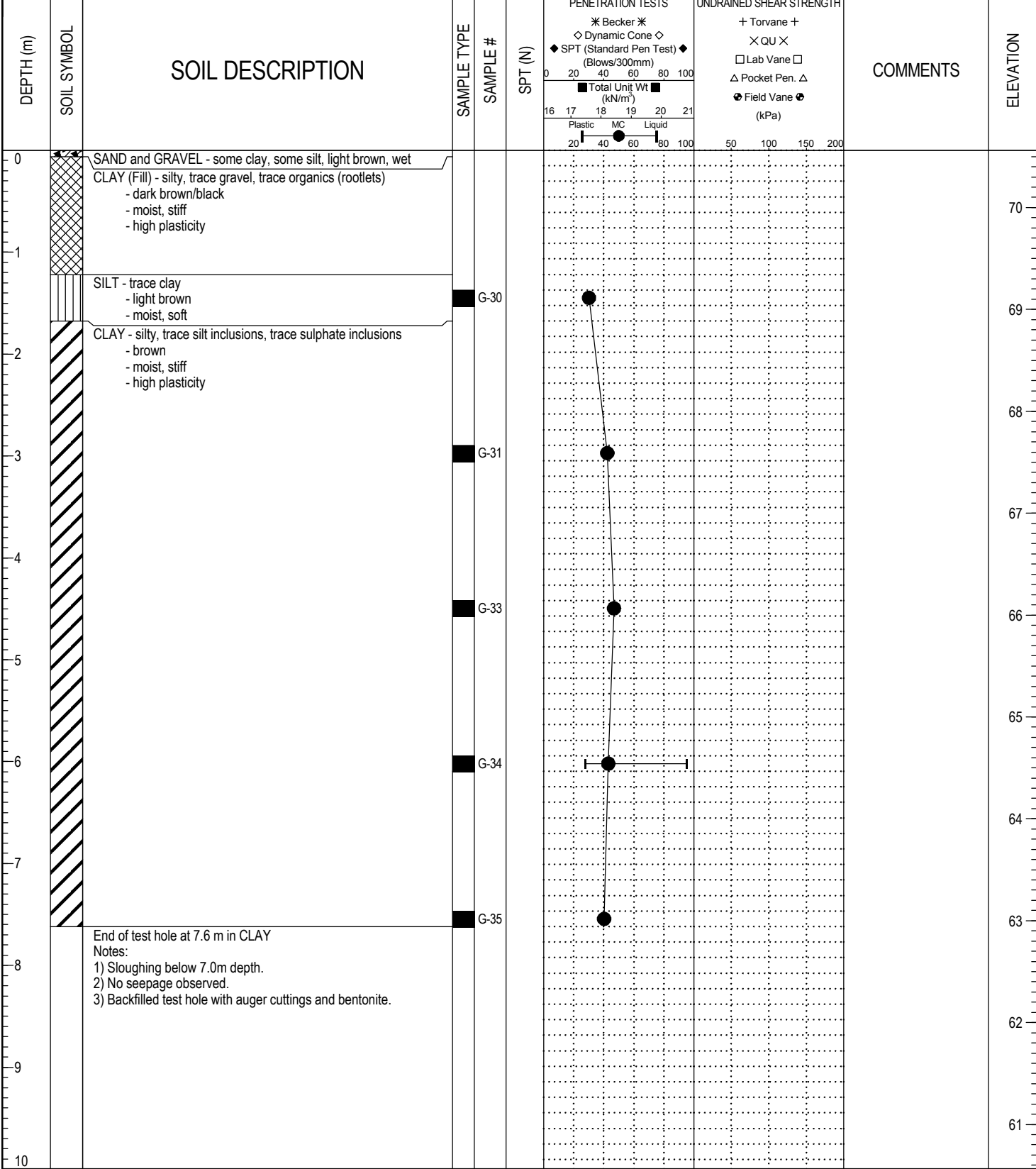
LOG OF TEST HOLE KING ST. BH LOGS.GPJ UMA WINN.GDT 6/23/09



LOGGED BY: Geoffrey Nolette      COMPLETION DEPTH: 7.62 m  
 REVIEWED BY: Gil Robinson      COMPLETION DATE: 5/25/09  
 PROJECT ENGINEER: Nelson Ferreira      Page 1 of 1

PROJECT: Alexander Bannatyne Contract S      CLIENT: City of Winnipeg-WWD      TESTHOLE NO: 09-02  
 LOCATION: King St. and Higgins Ave. (Approximate N - 5529716 E - 633818)      PROJECT NO.: D265-177-05-01  
 CONTRACTOR: Paddock Drilling Ltd.      METHOD: 125 mm ø Solid Stem Auger, Acker MP5      ELEVATION (m): 70.56

SAMPLE TYPE    GRAB    SHELBY TUBE    SPLIT SPOON    BULK    NO RECOVERY    CORE



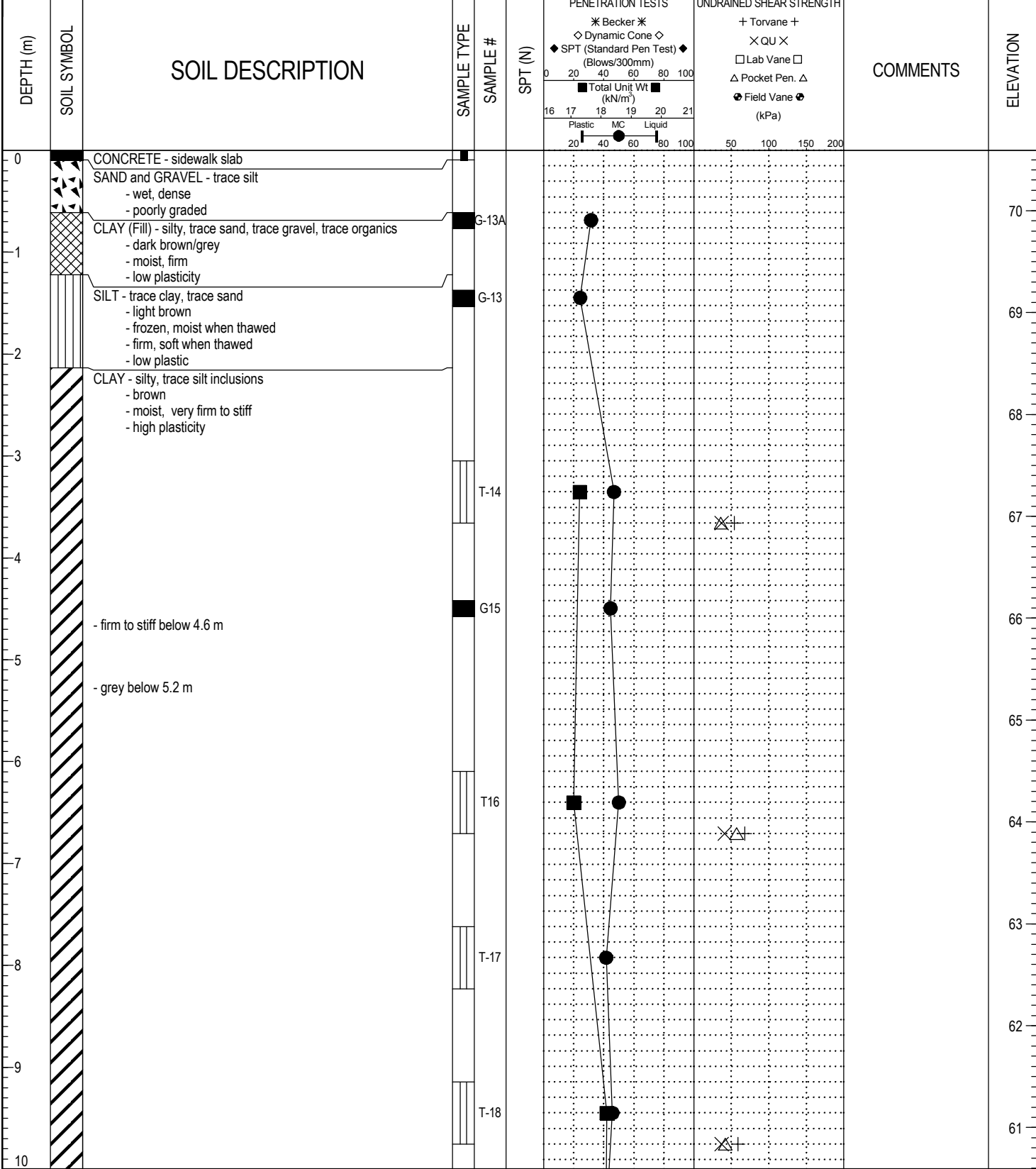
LOG OF TEST HOLE KING ST. BH LOGS.GPJ UMA WINN.GDT 6/23/09



LOGGED BY: Geoffrey Nolette      COMPLETION DEPTH: 7.62 m  
 REVIEWED BY: Gil Robinson      COMPLETION DATE: 5/25/09  
 PROJECT ENGINEER: Nelson Ferreira      Page 1 of 1

PROJECT: Alexander Bannatyne Contract S      CLIENT: City of Winnipeg-WWD      TESTHOLE NO: 09-03  
 LOCATION: King St. and Logan Ave. (Approximate N - 5529499 E - 633767)      PROJECT NO.: D265-177-05-01  
 CONTRACTOR: Paddock Drilling Ltd.      METHOD: 125 mm ø Solid Stem Auger, Acker MP5      ELEVATION (m): 70.59

SAMPLE TYPE    GRAB    SHELBY TUBE    SPLIT SPOON    BULK    NO RECOVERY    CORE



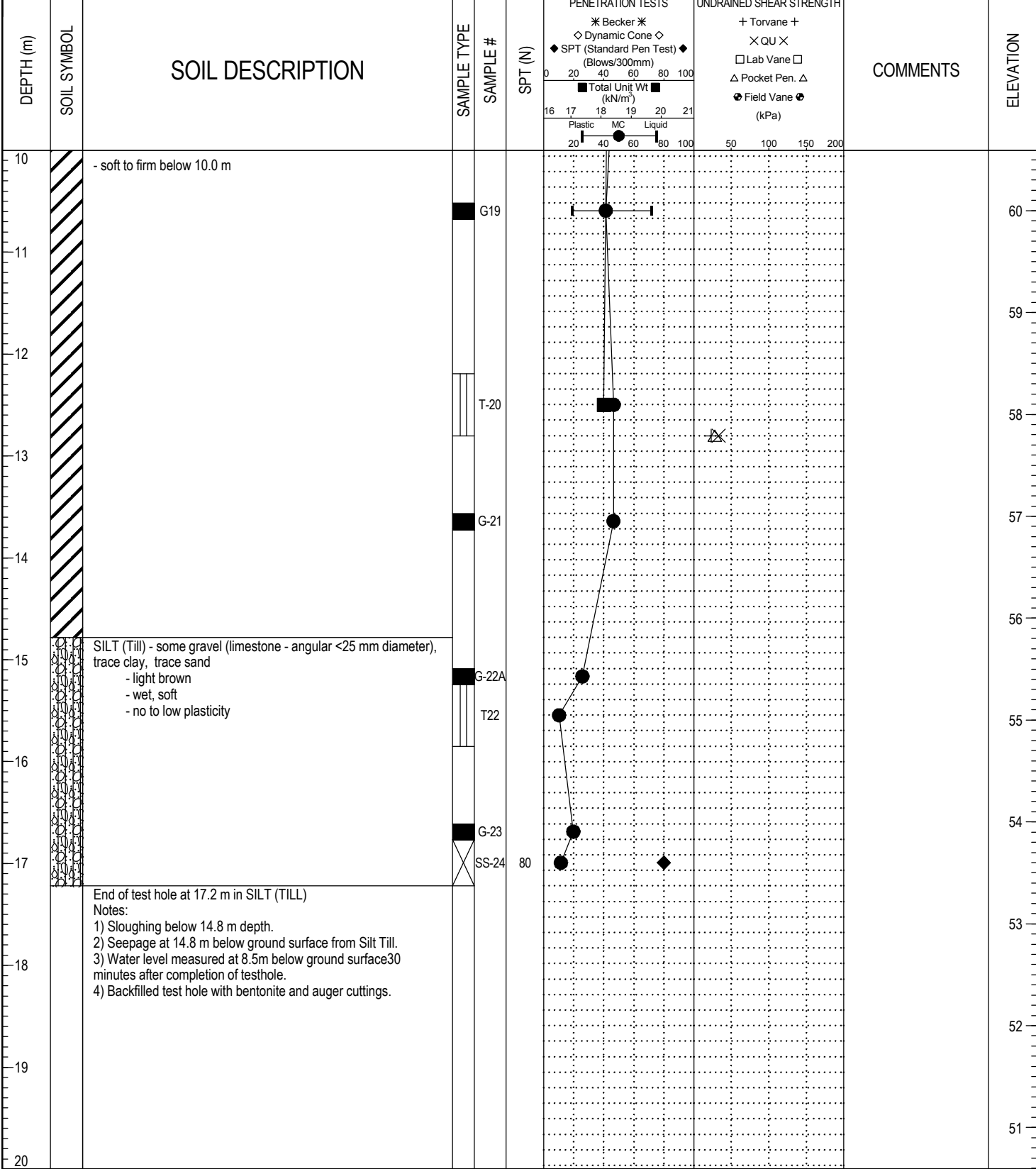
LOG OF TEST HOLE KING ST. BH LOGS.GPJ UMA WINNI.GDT 6/23/09



LOGGED BY: Geoffrey Nolette      COMPLETION DEPTH: 17.22 m  
 REVIEWED BY: Gil Robinson      COMPLETION DATE: 5/25/09  
 PROJECT ENGINEER: Nelson Ferreira      Page 1 of 2

PROJECT: Alexander Bannatyne Contract S      CLIENT: City of Winnipeg-WWD      TESTHOLE NO: 09-03  
 LOCATION: King St. and Logan Ave. (Approximate N - 5529499 E - 633767)      PROJECT NO.: D265-177-05-01  
 CONTRACTOR: Paddock Drilling Ltd.      METHOD: 125 mm ø Solid Stem Auger, Acker MP5      ELEVATION (m): 70.59

SAMPLE TYPE    GRAB    SHELBY TUBE    SPLIT SPOON    BULK    NO RECOVERY    CORE



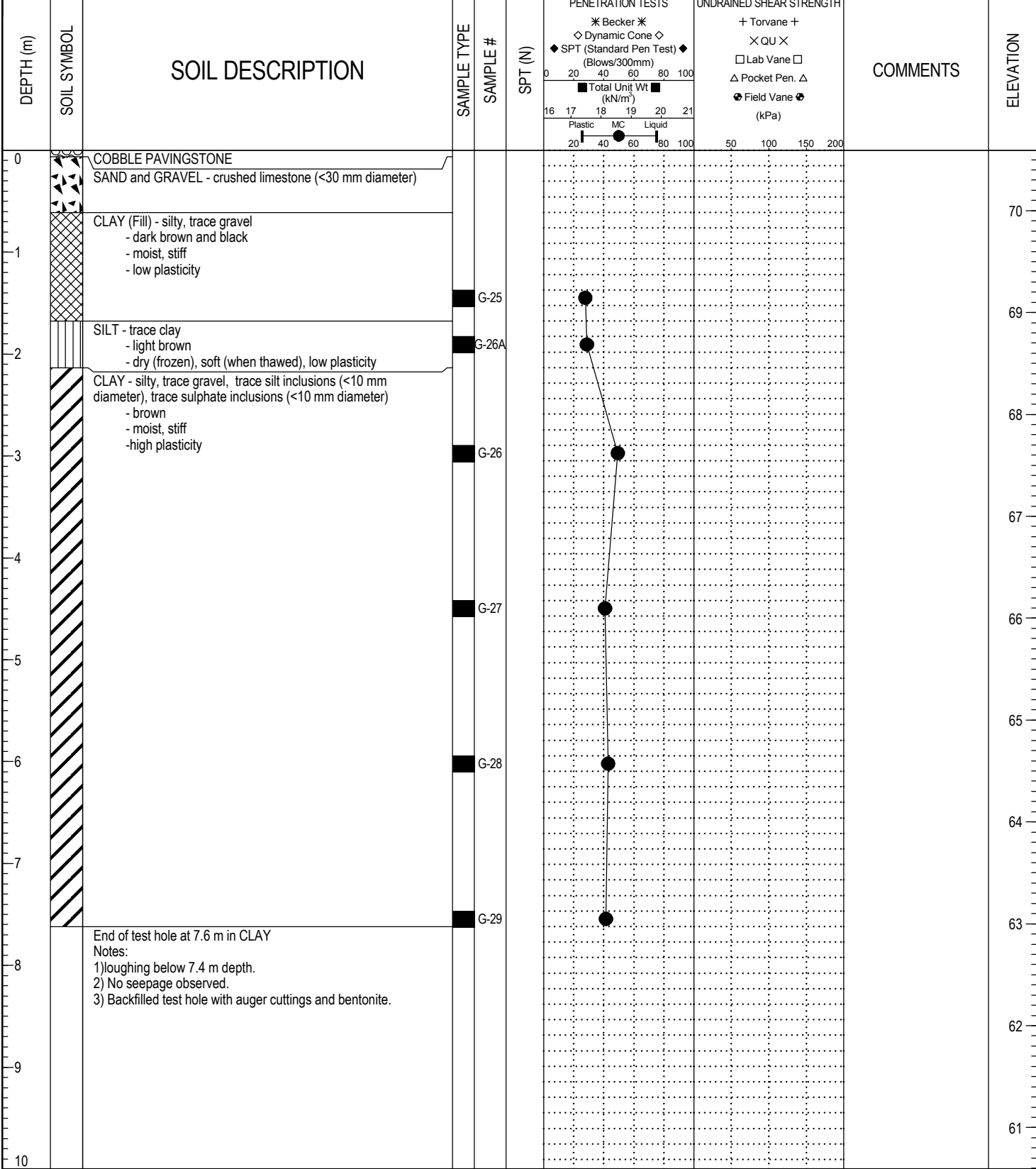
LOG OF TEST HOLE KING ST. BH LOGS.GPJ UMA WINN.GDT 6/23/09



LOGGED BY: Geoffrey Nolette      COMPLETION DEPTH: 17.22 m  
 REVIEWED BY: Gil Robinson      COMPLETION DATE: 5/25/09  
 PROJECT ENGINEER: Nelson Ferreira      Page 2 of 2

PROJECT: Alexander Bannatyne Contract S CLIENT: City of Winnipeg-WWD TESTHOLE NO: 09-04  
 LOCATION: Princess St. and Rupert Ave. (Approximate N - 5529337 E - 633582) PROJECT NO.: D265-177-05-01  
 CONTRACTOR: Paddock Drilling Ltd. METHOD: 125 mm ø Solid Stem Auger, Acker MP5 ELEVATION (m): 70.59

SAMPLE TYPE GRAB SHELBY TUBE SPLIT SPOON BULK NO RECOVERY CORE



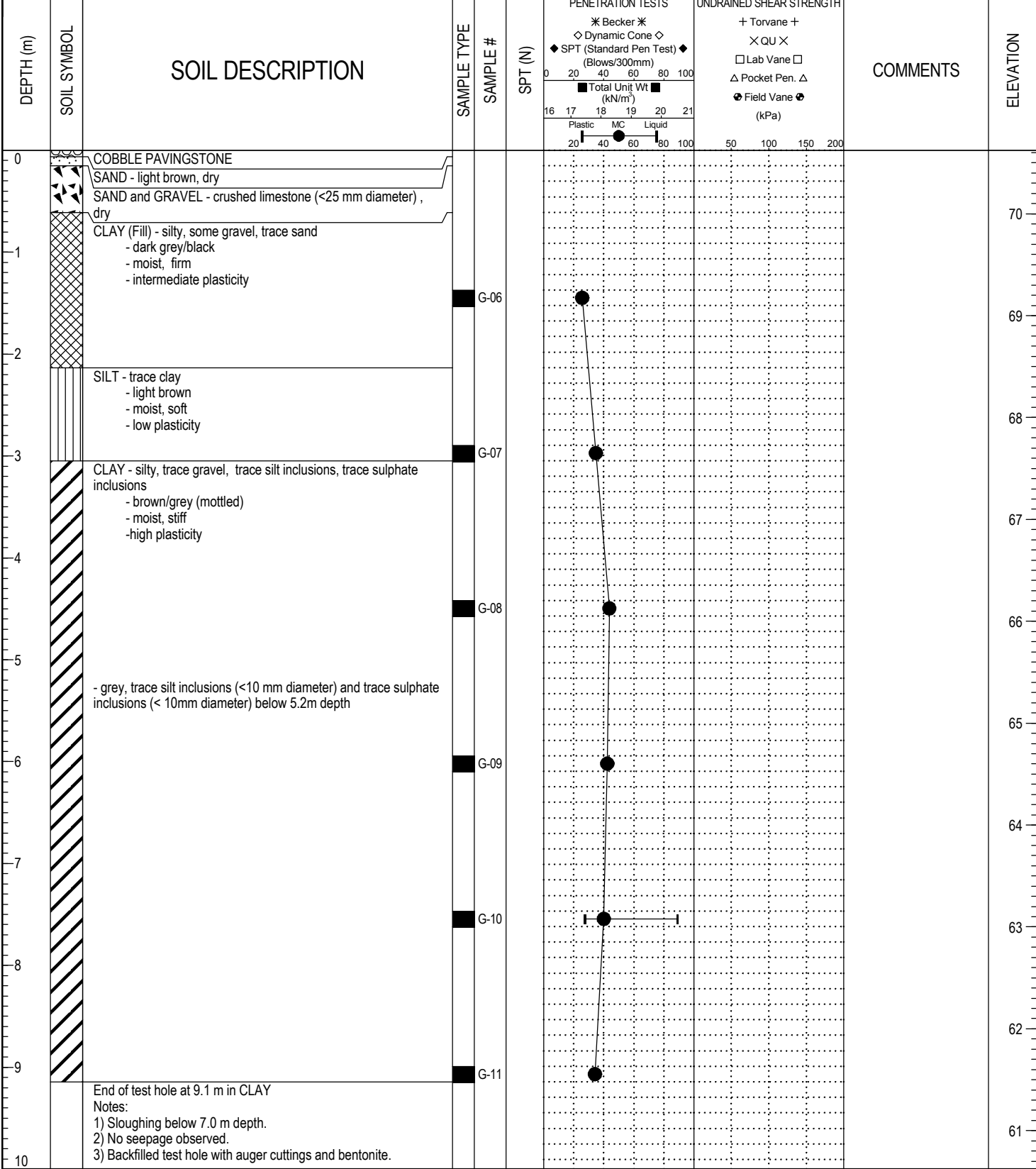
LOG OF TEST HOLE KING ST. BH LOGS.GPJ UJMA WINN.GDT 6/23/09



LOGGED BY: Geoffrey Nolette COMPLETION DEPTH: 7.62 m  
 REVIEWED BY: Gil Robinson COMPLETION DATE: 5/25/09  
 PROJECT ENGINEER: Nelson Ferreira Page 1 of 1

PROJECT: Alexander Bannatyne Contract S CLIENT: City of Winnipeg-WWD TESTHOLE NO: 09-05  
 LOCATION: King St. and William Ave. (Approximate N - 5529094 E - 633567) PROJECT NO.: D265-177-05-01  
 CONTRACTOR: Paddock Drilling Ltd. METHOD: 125 mm ø Solid Stem Auger, Acker MP5 ELEVATION (m): 70.62

SAMPLE TYPE  GRAB  SHELBY TUBE  SPLIT SPOON  BULK  NO RECOVERY  CORE



LOG OF TEST HOLE KING ST. BH LOGS.GPJ UMA WINN.GDT 6/23/09

End of test hole at 9.1 m in CLAY  
 Notes:  
 1) Sloughing below 7.0 m depth.  
 2) No seepage observed.  
 3) Backfilled test hole with auger cuttings and bentonite.



LOGGED BY: Geoffrey Nolette COMPLETION DEPTH: 9.14 m  
 REVIEWED BY: Gil Robinson COMPLETION DATE: 5/25/09  
 PROJECT ENGINEER: Nelson Ferreira Page 1 of 1