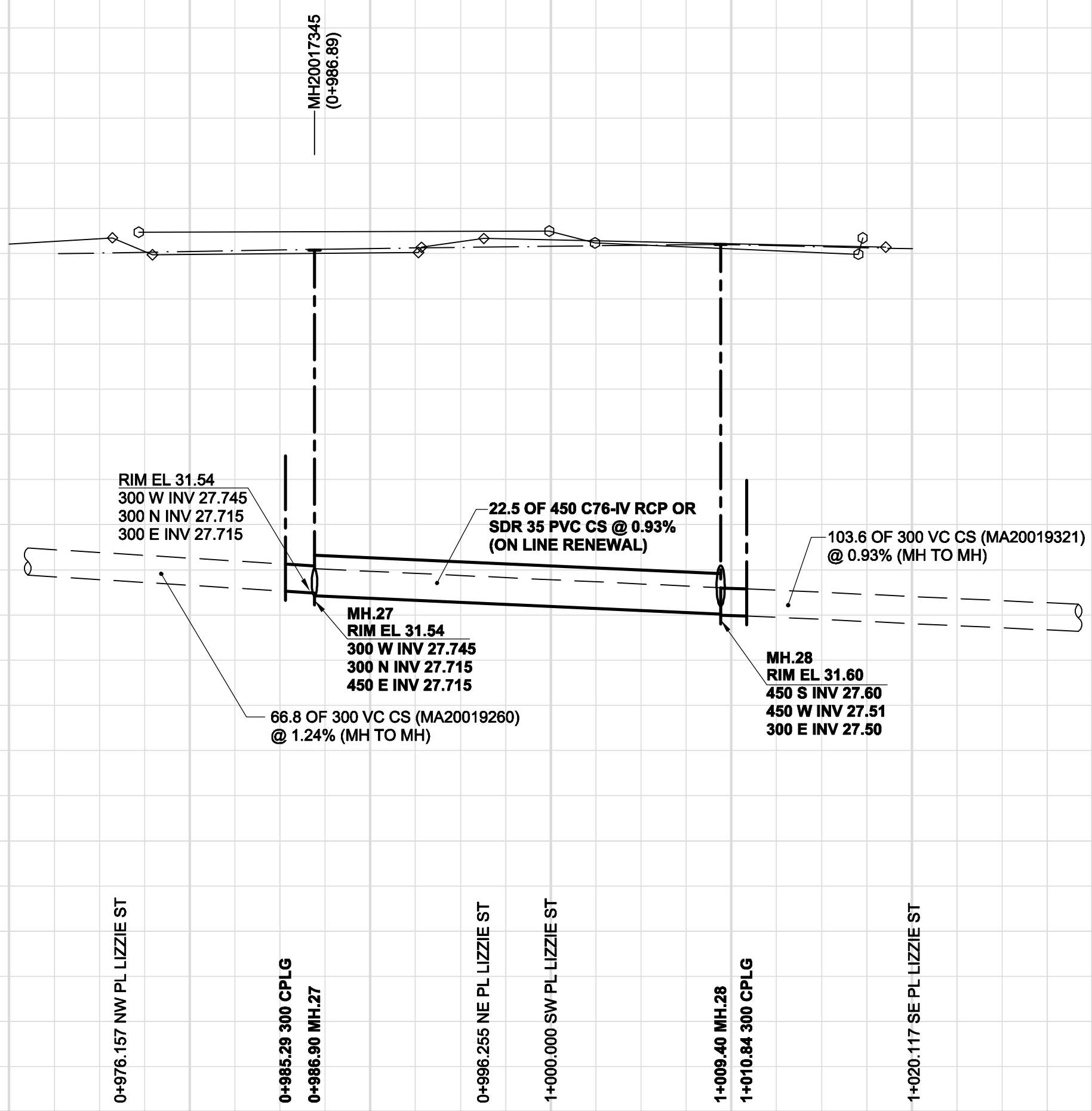
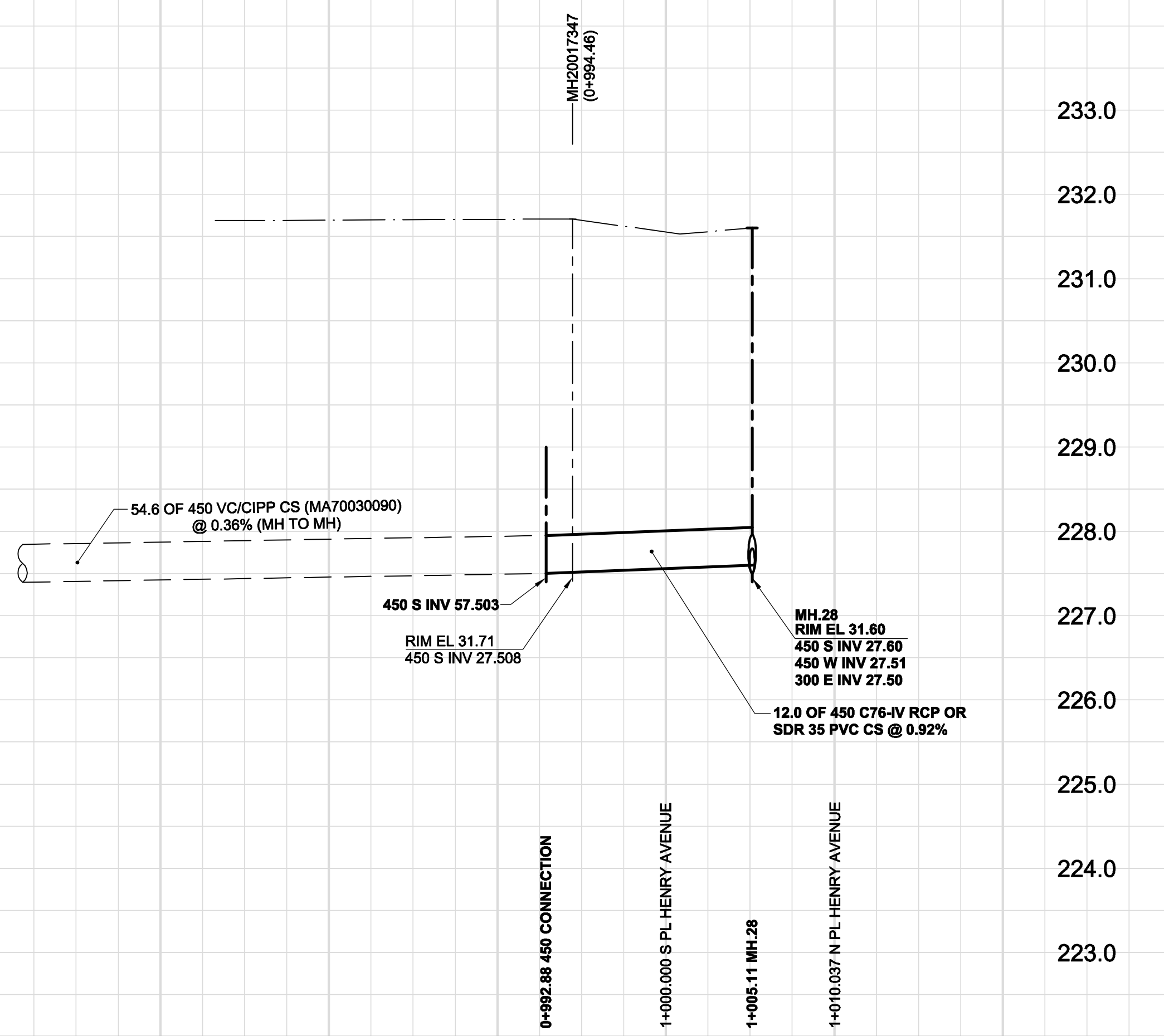


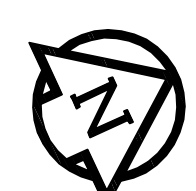
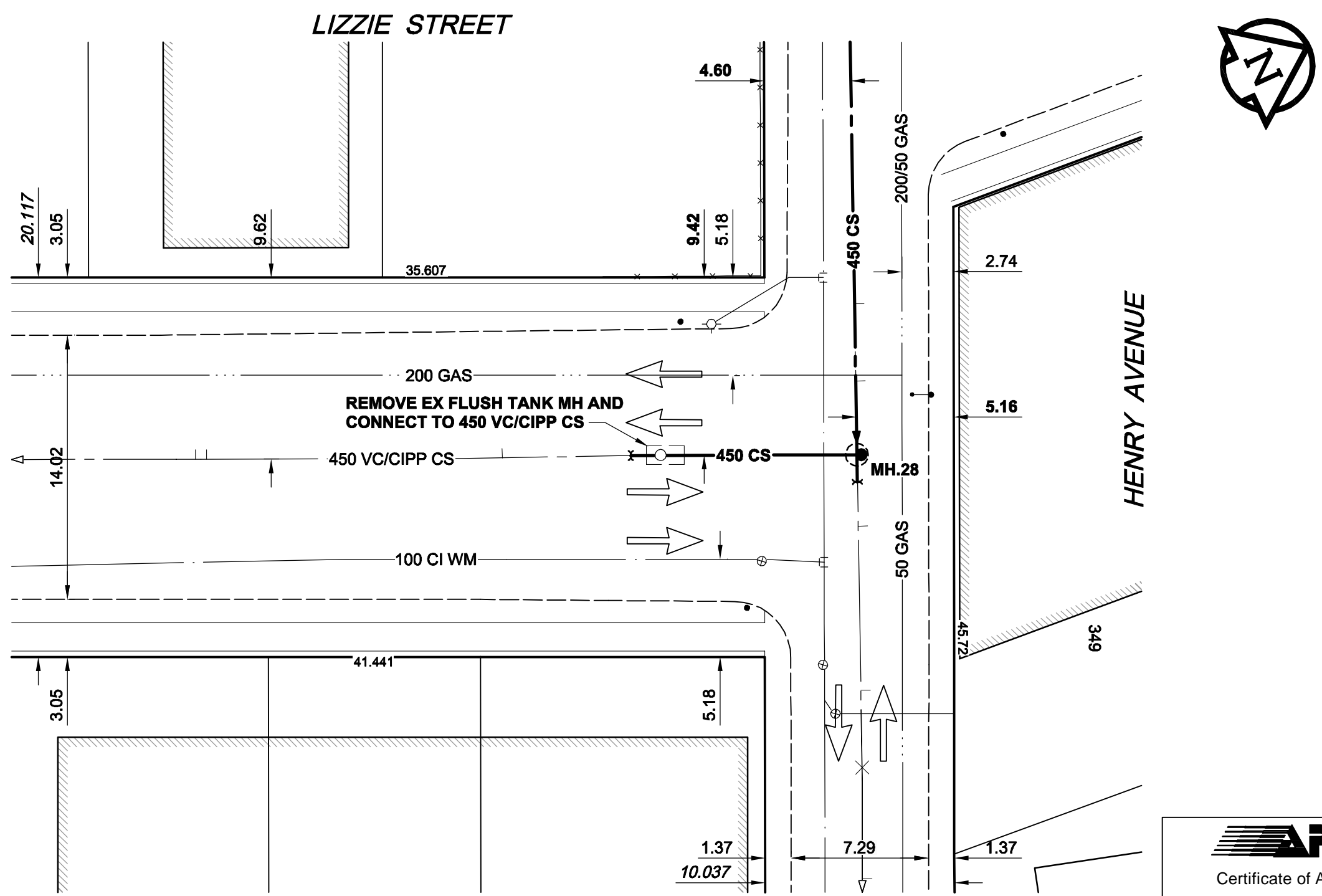
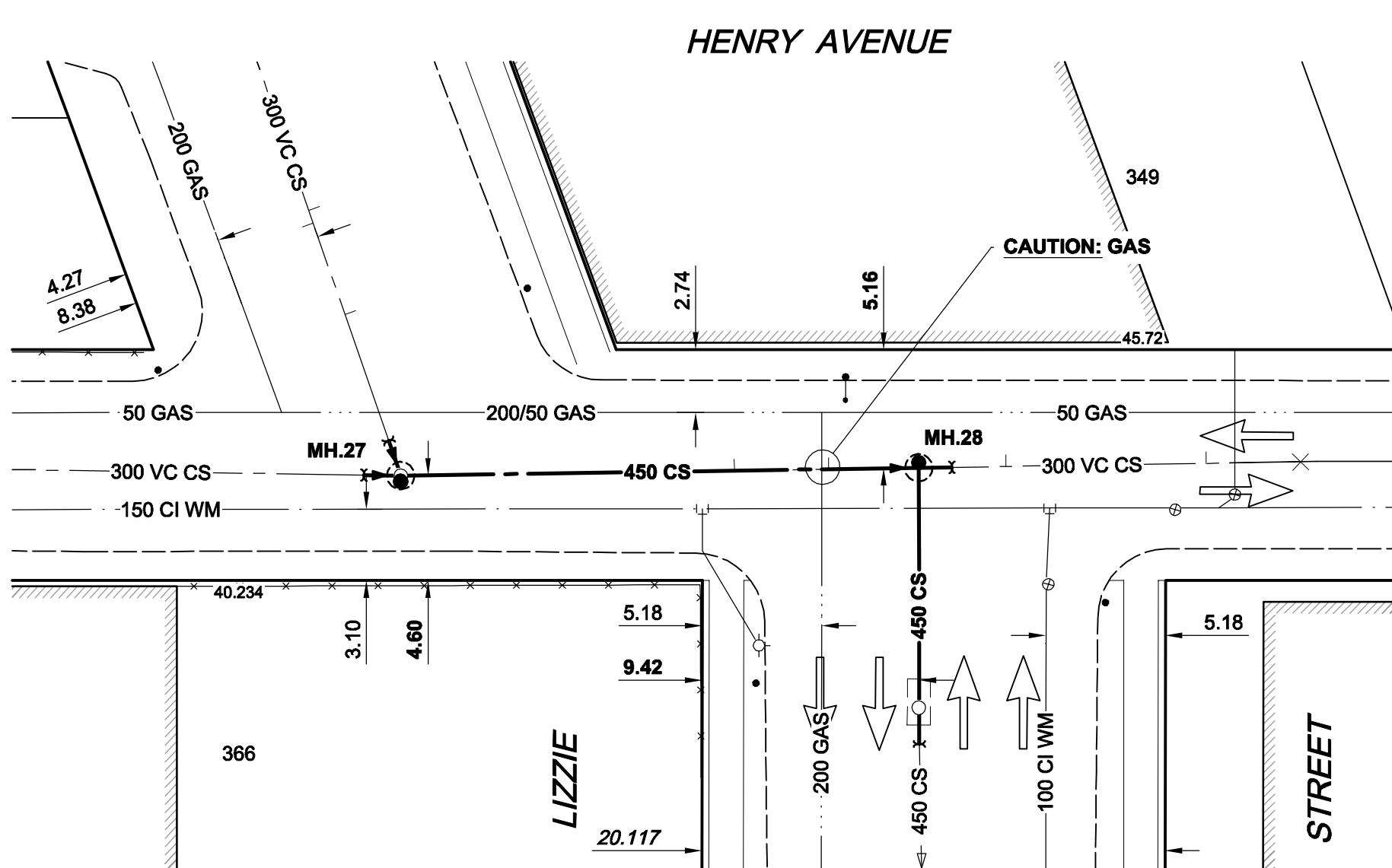
EXISTING FEATURES  
233.0  
232.0  
231.0  
230.0  
229.0  
228.0  
227.0  
226.0  
225.0  
224.0  
223.0



233.0  
232.0  
231.0  
230.0  
229.0  
228.0  
227.0  
226.0  
225.0  
224.0  
223.0



CHAINAGE ALONG S PL



- CONSTRUCTION NOTES:**
1. FOR DETAILED TEST HOLE INFORMATION, SEE SPECIFICATION.
  2. THE LOCATION OF ALL SERVICES IS TO BE CONFIRMED IN THE FIELD.
  3. INSTALL NEW SEWERS AND CATCHBASIN LEADS BY TRENCHLESS METHODS WHEREVER POSSIBLE.
  4. RENEW/REHABILITATE CATCHBASINS & RENEW CATCHBASIN LEADS WHERE NOTED.

**WARNING**  
IF POWER EQUIPMENT OR EXPLOSIVES ARE TO BE USED FOR EXCAVATION ON THIS PROJECT, THE CONTRACTOR MUST:  
1) NOTIFY THE GAS COMPANY OF THE PROPOSED LOCATION OF EXCAVATION.  
2) TAKE PRECAUTION TO AVOID DAMAGE TO GAS COMPANY INSTALLATIONS.  
SEE PROVINCIAL REGULATION 140/92 FOR DETAILS



BID OPPORTUNITY NO. 499-2009

EXISTING	LEGEND - PLAN	NEW	EXISTING	LEGEND - PROFILE	NEW
150 WM	WATERMAIN	150 WM	150 WM	WATERMAIN	150 WM
300 LDS	LAND DRAINAGE SEWER	300 LDS	300 LDS	LAND DRAINAGE SEWER	300 LDS
250 WWS	WASTE WATER SEWER	250 WWS	250 WWS	WASTE WATER SEWER	250 WWS
○	MANHOLE	●	○	MANHOLE	●
□	CATCH BASIN	■	□	CATCH BASIN	■
△	CURB INLET	▲	△	CURB INLET	▲
▭	CULVERT	▭	▭	CULVERT	▭
—	PIPE ABANDONMENTS	—	—	PIPE ABANDONMENTS	—
+	SURVEY BAR	+	+	SURVEY BAR	+
○	HYDRANT	○	○	HYDRANT	○
+	VALVE	+	+	VALVE	+
○	ANODE	○	○	ANODE	○
○	HYDRO	○	○	HYDRO	○
○	TESTHOLE	○	○	TESTHOLE	○
○	LAMP STANDARD	○	○	LAMP STANDARD	○
○	TREE	○	○	TREE	○

**LOCATION APPROVED UNDERGROUND STRUCTURES**  
SUPR. U/G STRUCTURES DATE COMMITTEE  
NOTE: LOCATION OF UNDERGROUND STRUCTURES AS SHOWN ARE BASED ON THE BEST INFORMATION AVAILABLE. BUT NO GUARANTEE IS GIVEN THAT ALL EXISTING UTILITIES ARE SHOWN OR THAT THE GIVEN LOCATIONS ARE EXACT. CONFIRMATION OF EXISTENCE AND EXACT LOCATION OF ALL SERVICES MUST BE OBTAINED FROM THE INDIVIDUAL UTILITIES BEFORE PROCEEDING WITH CONSTRUCTION.

NO.	REVISIONS	YYMMDD	BY
0	ISSUED FOR CONSTRUCTION	09/07/09	KMB

<b>AECOM</b>		DESIGNED BY: GEB		CHECKED BY: FMI	
DRAWN BY: KMB		APPROVED BY: BTW		RELEASED FOR CONSTRUCTION: C. Boulet	
HOR. SCALE: 1:250		VERT. SCALE: 1:50		DATE: July 7, 2009	

PROFESSIONAL'S SEAL  
ISSUE / REVISION 0  
ISSUED FOR CONSTRUCTION  
WAS SEALED BY  
A. NAGY  
AND DATED  
July 7, 2009  
CONSULTANT DRAWING NO.  
D265-177-05\_01-C-1018\_RX.dwg

**THE CITY OF WINNIPEG**  
WATER AND WASTE DEPARTMENT  
ALEXANDER/BANNATYNE  
COMBINED SEWER RELIEF  
CONTRACT 5  
INTERSECTION OF HENRY AVENUE AND LIZZIE STREET

SHEET 18 OF 20  
CITY DRAWING NUMBER  
LD-5420  
REV 0