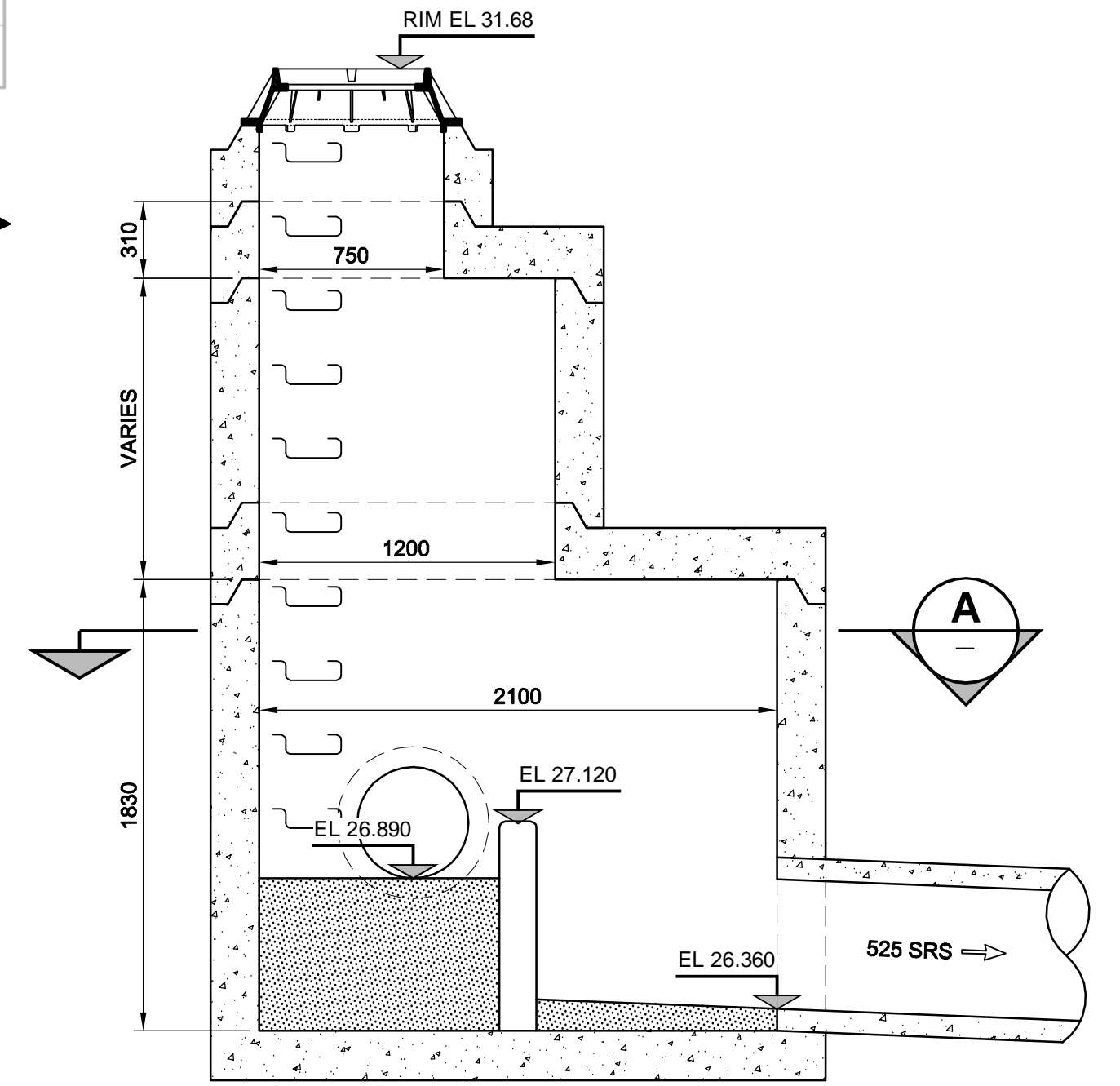
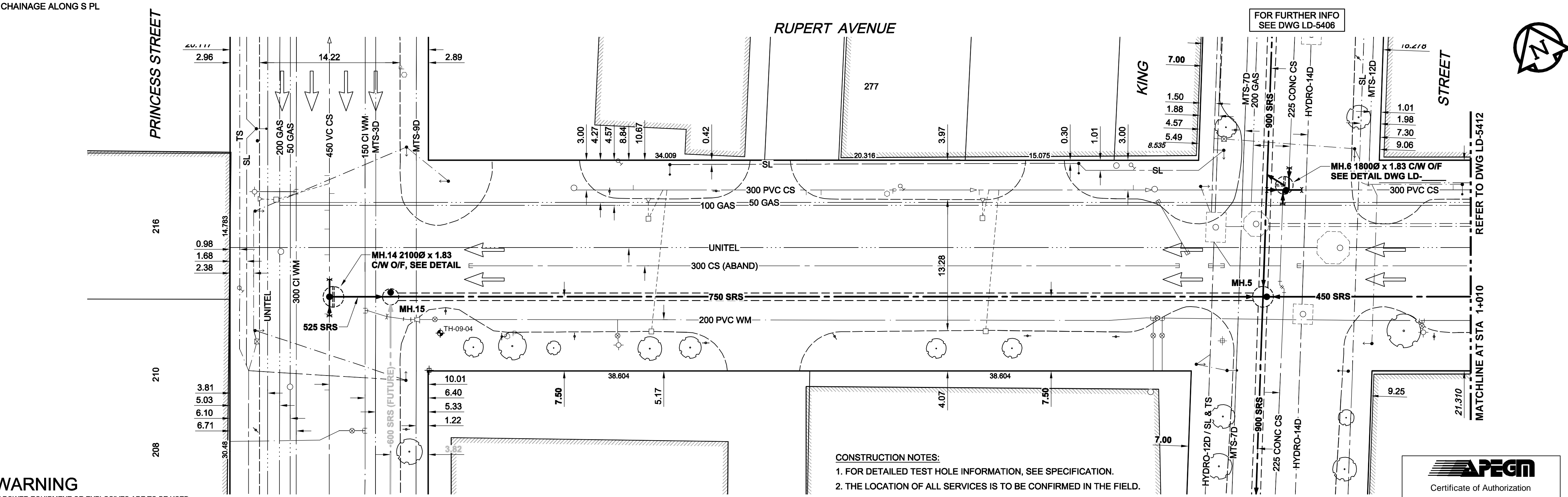
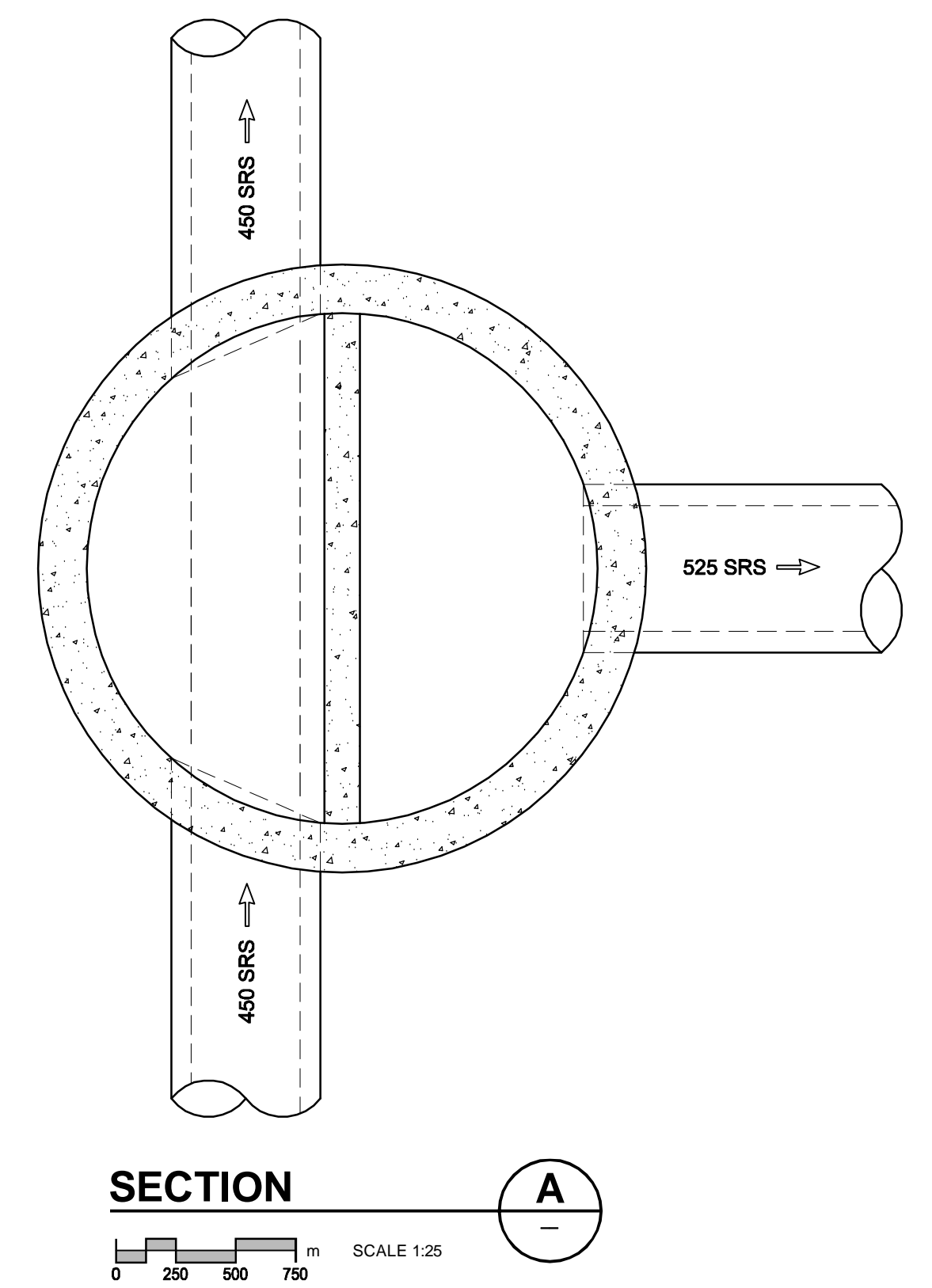
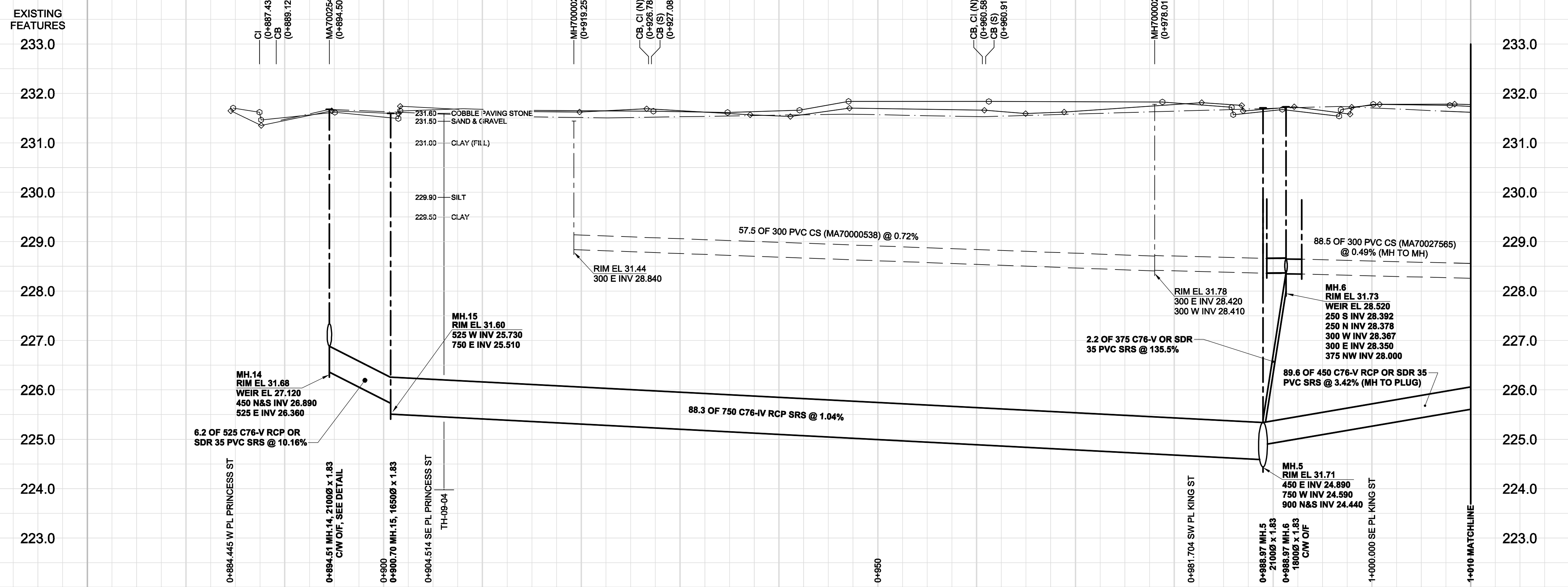


D SIZE 22" x 34" (559mm x 864mm)

PLOT: 09/07/07 2:07:45 PM

AECOM REVIEW DRFT CHK ADL  
AECOM FILE NAME: D265-177-05\_01-C-1009\_RX.dwg Saved By: [illegible]



- CONSTRUCTION NOTES:**
- FOR DETAILED TEST HOLE INFORMATION, SEE SPECIFICATION.
  - THE LOCATION OF ALL SERVICES IS TO BE CONFIRMED IN THE FIELD.
  - INSTALL NEW SEWERS AND CATCHBASIN LEADS BY TRENCHLESS METHODS WHEREVER POSSIBLE.
  - RENEW/REHABILITATE CATCHBASINS & RENEW CATCHBASIN LEADS WHERE NOTED.

**APEGM**  
Certificate of Authorization  
AECOM Canada Ltd.  
No. 4671 Date: July 7, 2009

**WARNING**  
IF POWER EQUIPMENT OR EXPLOSIVES ARE TO BE USED FOR EXCAVATION ON THIS PROJECT, THE CONTRACTOR MUST:  
1) NOTIFY THE GAS COMPANY OF THE PROPOSED LOCATION OF EXCAVATION.  
2) TAKE PRECAUTION TO AVOID DAMAGE TO GAS COMPANY INSTALLATIONS.  
SEE PROVINCIAL REGULATION 140/92 FOR DETAILS

EXISTING	LEGEND - PLAN	NEW	EXISTING	LEGEND - PROFILE	NEW	EXISTING	LEGEND - PROFILE	NEW
150 WM	WATERMAIN	150 WM	CURB STOP	150 WM	WATERMAIN	150 WM	WATERMAIN	150 WM
300 LDS	LAND DRAINAGE SEWER	300 LDS	REDUCER	300 LDS	LAND DRAINAGE SEWER	300 LDS	LAND DRAINAGE SEWER	300 LDS
250 WWS	WASTE WATER SEWER	250 WWS	COUPLING	250 WWS	WASTE WATER SEWER	250 WWS	WASTE WATER SEWER	250 WWS
○	MANHOLE	●	ANODE	○	MANHOLE	○	MANHOLE	○
□	CATCH BASIN	■	HYDRO	□	CATCH BASIN	□	CATCH BASIN	□
△	CURB INLET	▲	MTS	△	CURB INLET	△	CURB INLET	△
▭	CULVERT	▭	GAS	▭	CULVERT	▭	CULVERT	▭
—	PIPE ABANDONMENTS	—	TESTHOLE	—	PIPE ABANDONMENTS	—	PIPE ABANDONMENTS	—
+	SURVEY BAR	+	LAMP STANDARD	+	SURVEY BAR	+	SURVEY BAR	+
+	EXISTING	+	TREE	+	EXISTING	+	EXISTING	+
+	LEGEND - PLAN	+	LEGEND - PROFILE	+	LEGEND - PLAN	+	LEGEND - PROFILE	+

**LOCATION APPROVED**  
UNDERGROUND STRUCTURES  
SUPR. U/G STRUCTURES DATE COMMITTEE  
NOTE: LOCATION OF UNDERGROUND STRUCTURES AS SHOWN ARE BASED ON THE BEST INFORMATION AVAILABLE. BUT NO GUARANTEE IS GIVEN THAT ALL EXISTING UTILITIES ARE SHOWN OR THAT THE GIVEN LOCATIONS ARE EXACT. CONFIRMATION OF EXISTENCE AND EXACT LOCATION OF ALL SERVICES MUST BE OBTAINED FROM THE INDIVIDUAL UTILITIES BEFORE PROCEEDING WITH CONSTRUCTION.

NO.	REVISIONS	YYMMDD	BY
0	ISSUED FOR CONSTRUCTION	09/07/06	KMB

DESIGNED BY	GEB	CHECKED BY	FMI
DRAWN BY	KMB	APPROVED BY	BTW
HOR. SCALE	1:250	RELEASED FOR CONSTRUCTION	C. Boulet
VERT. SCALE	1:50	DATE	July 7, 2009

PROFESSIONAL'S SEAL  
ISSUE / REVISION 0  
ISSUED FOR CONSTRUCTION  
WAS SEALED BY  
A. NAGY  
AND DATED  
July 7, 2009  
CONSULTANT DRAWING NO.  
D265-177-05\_01-C-1009\_RX.dwg

**THE CITY OF WINNIPEG**  
WATER AND WASTE DEPARTMENT  
ALEXANDER/BANNATYNE  
COMBINED SEWER RELIEF  
CONTRACT 5  
RUPERT AVENUE  
PRINCESS STREET  
TO MATCHLINE 1+010  
SHEET 9 OF 20  
CITY DRAWING NUMBER  
LD-5411  
REV 0  
BID OPPORTUNITY NO. 499-2009