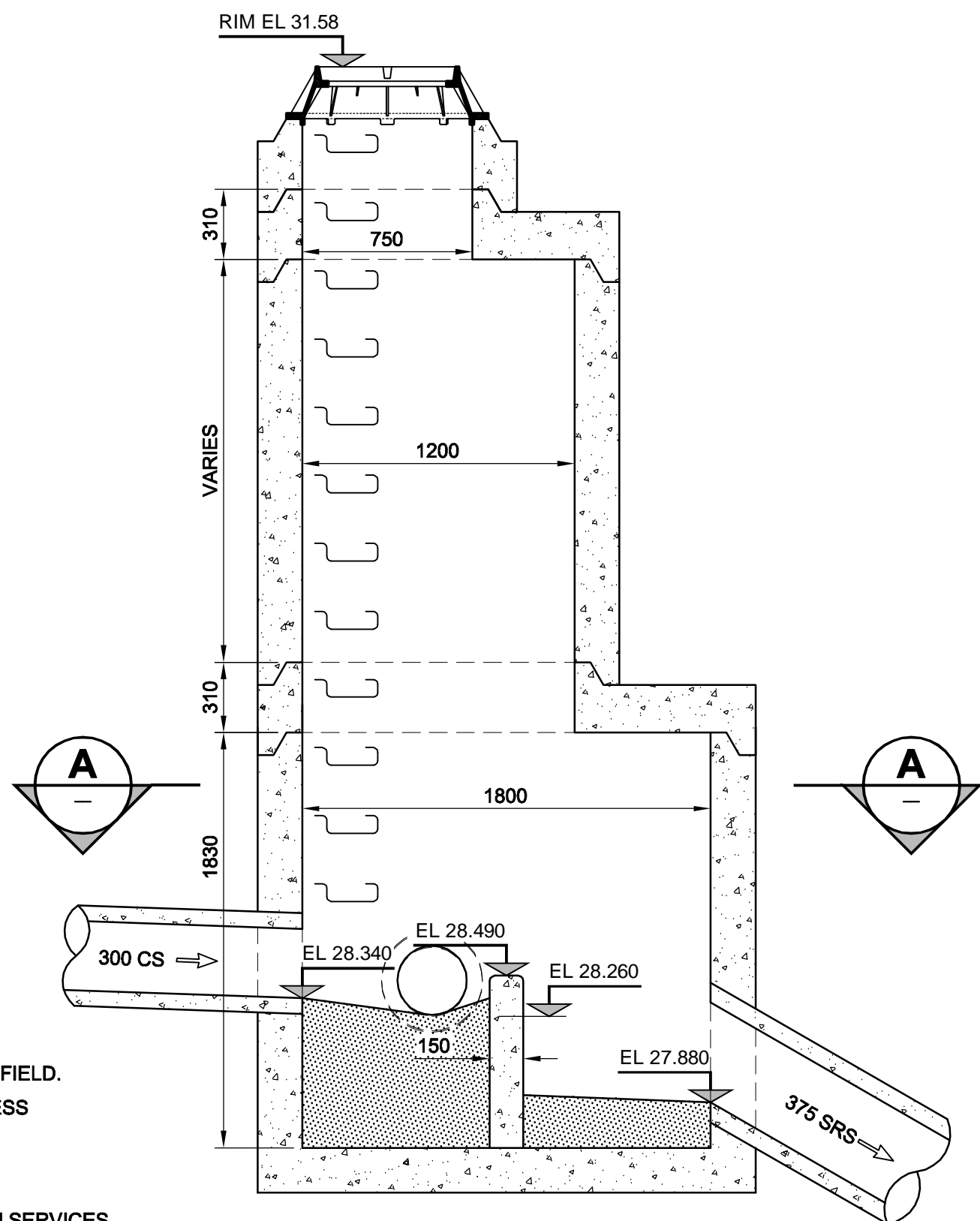
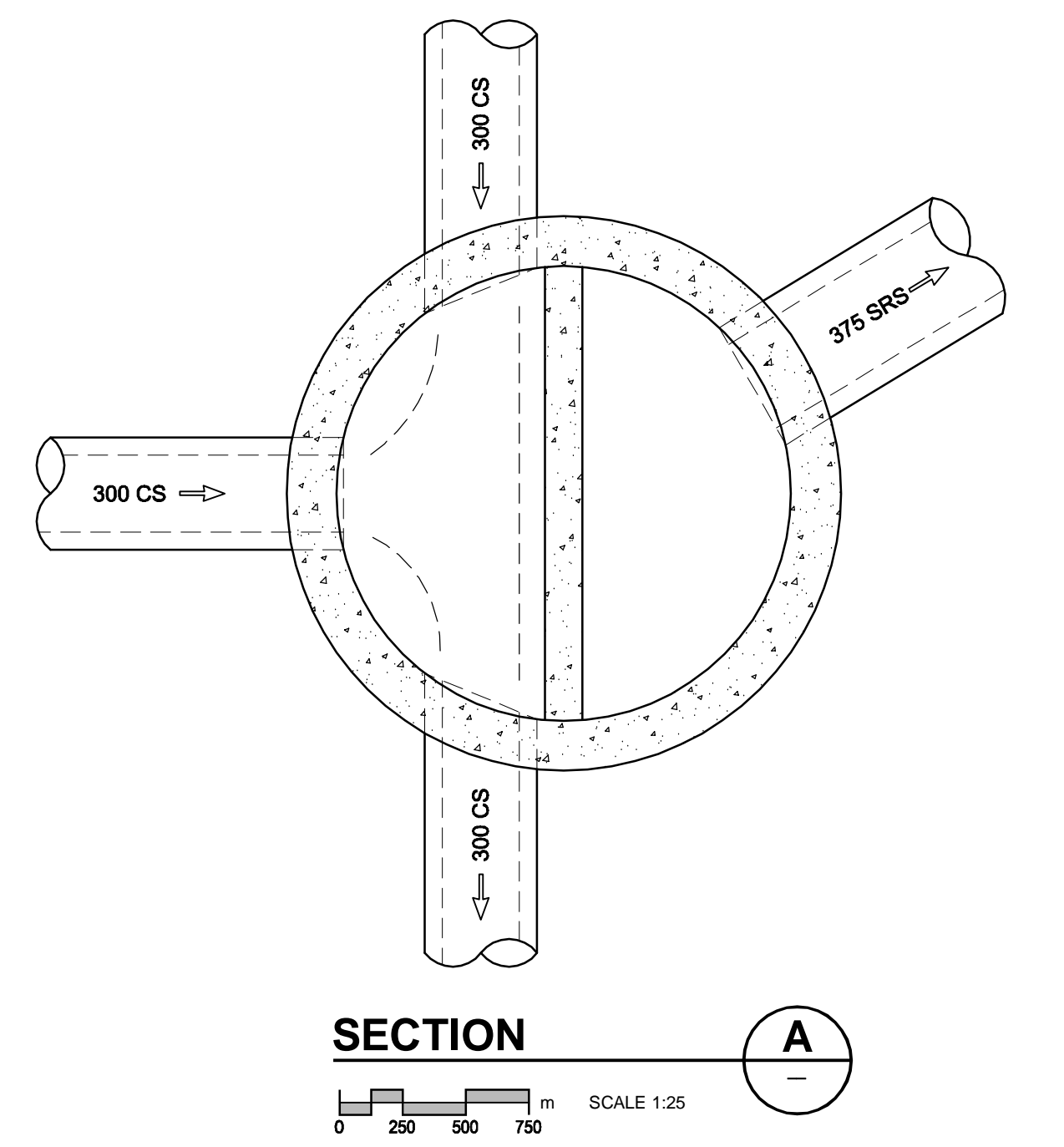
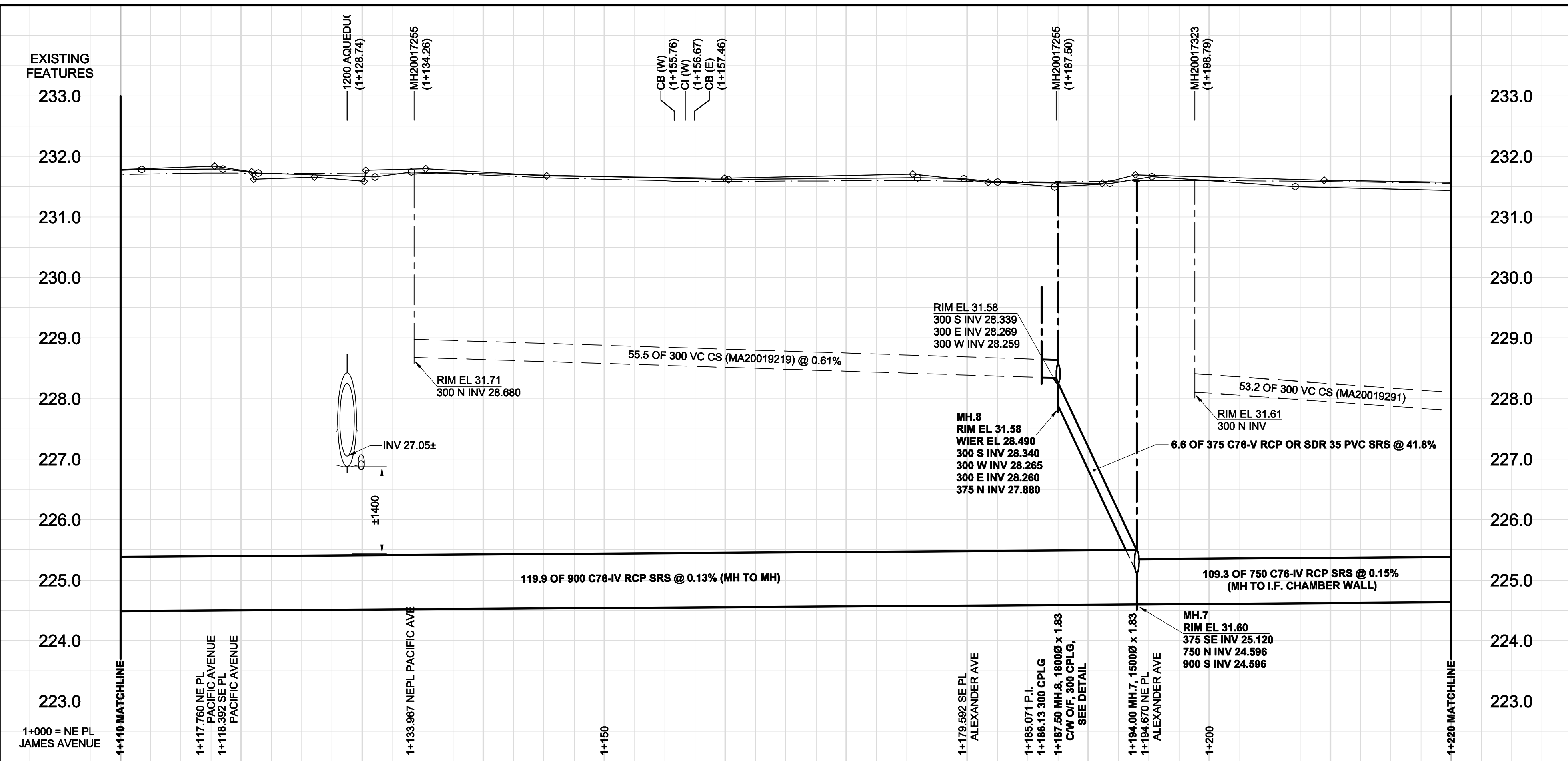


D SIZE 22" x 34" (559mm x 864mm)

PLOT: 09/07/07 2:00:45 PM

AECOM REVIEW DRFT CHK ADL
AECOM FILE NAME: D265-177-05_01-C-1004_RX.dwg Saved By: rpp



- CONSTRUCTION NOTES:**
- FOR DETAILED TEST HOLE INFORMATION, SEE SPECIFICATION.
 - THE LOCATION OF ALL SERVICES IS TO BE CONFIRMED IN THE FIELD.
 - INSTALL NEW SEWERS AND CATCHBASIN LEADS BY TRENCHLESS METHODS WHEREVER POSSIBLE.
 - RENEW/REHABILITATE CATCHBASINS & RENEW CATCHBASIN LEADS WHERE NOTED.
 - CONTACT THE WATER & WASTE DEPARTMENT CONSTRUCTION SERVICES CO-ORDINATOR ANDY VINCENT AT 986-3823 A MINIMUM OF 7 DAYS PRIOR TO CROSSING OR WORKING ADJACENT TO AQUEDUCT.

APEGM
Certificate of Authorization
AECOM Canada Ltd.
No. 4671 Date: July 7, 2009

MANHOLE 8 OVERFLOW DETAIL
SCALE 1:25
TYPICAL MANHOLE REQUIREMENTS AS PER SD-010

WARNING
IF POWER EQUIPMENT OR EXPLOSIVES ARE TO BE USED FOR EXCAVATION ON THIS PROJECT, THE CONTRACTOR MUST:
1) NOTIFY THE GAS COMPANY OF THE PROPOSED LOCATION OF EXCAVATION.
2) TAKE PRECAUTION TO AVOID DAMAGE TO GAS COMPANY INSTALLATIONS.
SEE PROVINCIAL REGULATION 140/92 FOR DETAILS

150 WM	WATERMAIN	150 WM	CURB STOP	150 WM	WATERMAIN	150 WM
	HYDRANT		REDUCER		HYDRANT	
	VALVE		COUPLING		VALVE	
	LAND DRAINAGE SEWER		ANODE		LAND DRAINAGE SEWER	
	WASTE WATER SEWER		HYDRO		WASTE WATER SEWER	
	MANHOLE		MTS		PAVEMENT CROWN	
	CATCH BASIN		GAS		N/W PROPERTY LINE	
	CURB INLET		TESTHOLE		S/E PROPERTY LINE	
	CULVERT		LAMP STANDARD		N/W GUTTER	
	PIPE ABANDONMENTS		TREE		S/E GUTTER	
	SURVEY BAR					
	EXISTING					
	NEW					
	LEGEND - PLAN					
	LEGEND - PROFILE					
	LEGEND - PLAN					
	LEGEND - PROFILE					

LOCATION APPROVED
UNDERGROUND STRUCTURES
SUPR. U/G STRUCTURES DATE COMMITTEE
NOTE: LOCATION OF UNDERGROUND STRUCTURES AS SHOWN ARE BASED ON THE BEST INFORMATION AVAILABLE. BUT NO GUARANTEE IS GIVEN THAT ALL EXISTING UTILITIES ARE SHOWN OR THAT THE GIVEN LOCATIONS ARE EXACT. CONFIRMATION OF EXISTENCE AND EXACT LOCATION OF ALL SERVICES MUST BE OBTAINED FROM THE INDIVIDUAL UTILITIES BEFORE PROCEEDING WITH CONSTRUCTION.

NO.	ISSUED FOR CONSTRUCTION	DATE	BY
0	ISSUED FOR CONSTRUCTION	09/07/06	KMB
	NO. REVISIONS	YYMMDD	BY

DESIGNED BY		CHECKED BY	
GEB	FMI	GEB	FMI
DRAWN BY		APPROVED BY	
KMB	BTW	KMB	BTW
HOR. SCALE		VERT. SCALE	
1:250	1:50	1:250	1:50
DATE		DATE	
July 7, 2009	July 7, 2009	July 7, 2009	July 7, 2009

PROFESSIONAL'S SEAL
ISSUE / REVISION 0
ISSUED FOR CONSTRUCTION
WAS SEALED BY
A. NAGY
AND DATED
July 7, 2009
CONSULTANT DRAWING NO.
D265-177-05_01-C-1004_RX.dwg

THE CITY OF WINNIPEG
WATER AND WASTE DEPARTMENT
ALEXANDER/BANNATYNE
COMBINED SEWER RELIEF
CONTRACT 5
KING STREET
MATCHLINE 1+110
TO MATCHLINE 1+220

SHEET 4 OF 20
CITY DRAWING NUMBER
LD-5406
REV 0

BID OPPORTUNITY NO. 499-2009