

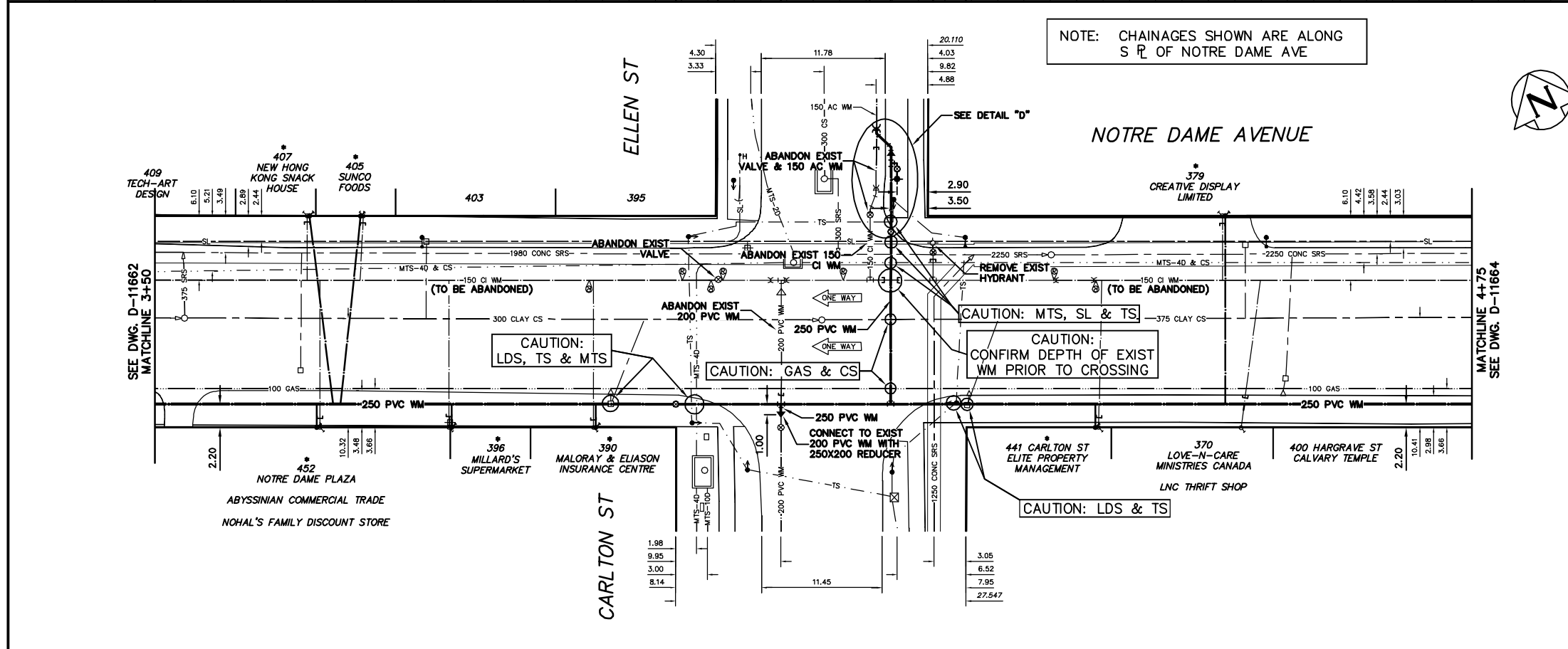
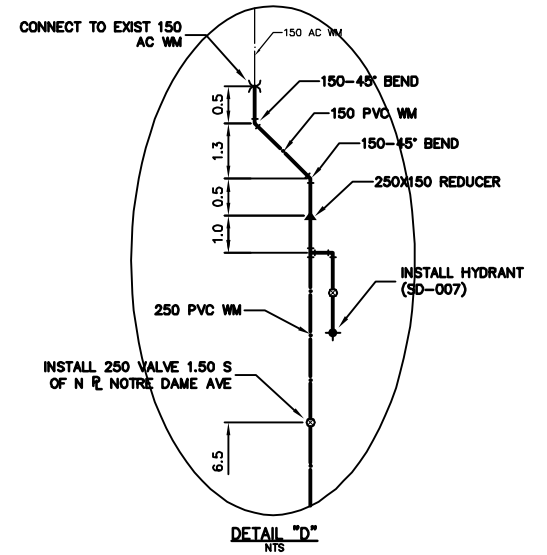
WATER SERVICE INFORMATION

ADDRESS	SIZE(mm) & TYPE (STREET)	SIZE(mm) & TYPE (PROP)	SHORT & LONG MEASUREMENT	CORP. LOCATION	REMARKS
370 NOTRE DAME AVE COMMERCIAL	25 COPPER	25 COPPER	2.96 EWL BLDG 26.04 EEL CARLTON	1.9 E OF S/C	RECONNECT SERVICE
379 NOTRE DAME AVE COMMERCIAL	20 COPPER LEAD	20 COPPER LEAD	10.36 EWL BLDG 32.98 WML D'AMAR	OPP S/C	RENEW TO 1/2" WITH 25 COPPER
390 NOTRE DAME AVE COMMERCIAL	25 LEAD	25 LEAD	3.86 EWL BLDG 7.79 WML CARLTON	OPP S/C	RENEW TO 1/2" WITH 25 COPPER
395 NOTRE DAME AVE COMMERCIAL	20 COPPER	20 COPPER	3.24 S/E BLDG 17.07 N/NL NOTRE DAME	0.3 N OF S/C	SERVICED OFF ELLEN
396 NOTRE DAME AVE COMMERCIAL	16 COPPER	16 COPPER	2.42 EWL BLDG 21.54 WML CARLTON	OPP S/C	RENEW TO 1/2" WITH 25 COPPER
403 NOTRE DAME AVE EMPTY LOT	-	-	-	-	SERVICE CUT-OFF
405 NOTRE DAME AVE COMMERCIAL	20 COPPER	20 COPPER	3.75 EWL BLDG 27.27 EEL FRANCES	0.3 W OF S/C	RENEW TO 1/2" WITH 25 COPPER
408 NOTRE DAME AVE COMMERCIAL	25 LEAD	25 LEAD	7.27 EWL BLDG 33.73 WML CARLTON	OPP S/C	RENEW TO 1/2" WITH 25 COPPER
407 NOTRE DAME AVE COMMERCIAL	16 COPPER	16 COPPER	1.77 WEL BLDG 21.91 EEL FRANCES	OPP S/C	RENEW TO 1/2" WITH 25 COPPER
400 HARGRAVE ST COMMERCIAL	38 COPPER	38 COPPER	10.13 WEL BLDG 53.12 WML HARGRAVE	0.9 E OF S/C	SERVICED OF NOTRE DAME RECONNECT SERVICE
400 HARGRAVE ST COMMERCIAL	150 COPPER	150 COPPER	10.88 WEL BLDG 52.85 WML HARGRAVE	OPP VALVE	SERVICED OF NOTRE DAME RECONNECT SERVICE
441 CARLTON ST COMMERCIAL	20 COPPER	20 COPPER	1.90 WEL BLDG 12.56 EEL CARLTON	0.3 E OF S/C	SERVICED OF NOTRE DAME RECONNECT SERVICE

* SERVICES TO BE RENEWED TO 1/2" UPON CONFIRMATION BY THE CONTRACTOR OF EXISTING 1/2" COPPER OR LEAD SERVICE. OBTAIN APPROVAL FROM CONTRACT ADMINISTRATOR PRIOR TO RENEWAL.

CONSTRUCTION NOTES

1. EXPOSE EXISTING WATERMAIN & CONFIRM INVERTS PRIOR TO CONSTRUCTION.
2. CONFIRM LOCATION OF ALL SERVICES IN THE FIELD.
3. INSTALL WATERMAIN BY TRENCHLESS METHODS.
4. TRENCHES AND EXCAVATIONS WITHIN 1 METRE OF A PAVED AREA INCLUDING SIDEWALKS SHALL BE CLASS 3 BACKFILL.
5. ALL MATERIALS SHALL CONFORM TO THE CITY OF WINNIPEG STANDARD CONSTRUCTION SPECIFICATIONS.
6. MINIMUM COVER TO TOP OF WATERMAIN SHALL BE 2.4 m.
7. REPLACE ALL EXISTING LEAD SERVICES FROM PROPOSED WATERMAIN TO 1/2".
8. NOTIFY ALL AFFECTED RESIDENTS AND BUSINESSES 24 HOURS IN ADVANCE OF ANY WATER SHUTDOWNS OR DISRUPTION OF SERVICE.



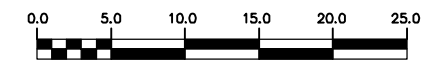
METRIC

WHOLE NUMBERS INDICATE MILLIMETRES
DECIMALIZED NUMBERS INDICATE METRES

NOTE: ALL VALVES TO BE INSTALLED COUNTERCLOCKWISE TO CLOSE WITH RED OPERATING NUT

WARNING

IF POWER EQUIPMENT OR EXPLOSIVES ARE TO BE USED FOR EXCAVATION ON THIS PROJECT THE CONTRACTOR MUST:
1) NOTIFY THE GAS COMPANY OF THE PROPOSED LOCATION OF EXCAVATION.
2) TAKE PRECAUTION TO AVOID DAMAGE TO GAS COMPANY INSTALLATIONS.
SEE PROVINCIAL REGULATION 210/72 FOR DETAILS



200 WM	WATERMAIN	200 WM	SL, HYDRO	150 WM	WATERMAIN	150 WM
⊕	HYDRANT	⊕	MTS	⊕	HYDRANT	⊕
⊙	VALVE	⊙	TRAFFIC SIGNALS	⊙	VALVE	⊙
525 LDS	LAND DRAINAGE SEWER	525 LDS	GAS	300 LDS	LAND DRAINAGE SEWER	300 LDS
375 WWS	WASTEWATER SEWER	375 WWS	SURVEY BAR	250 WWS	WASTEWATER SEWER	250 WWS
○	MANHOLE	○	FENCE	⊕	PROFILE	⊕
□	CATCH BASIN	□	POLE - HYDRO, MTS	⊕	GROUND ABOVE PIPE	⊕
▽	CURB INLET	▽	CURB STOP	⊕	⊕ DITCH (NORTH & WEST)	⊕
◁	REDUCER	◁	GUY ANCHOR	⊕	⊕ DITCH (SOUTH & EAST)	⊕
⊕	COUPLER	⊕	LIGHT STANDARD	⊕	⊕ GUTTER (NORTH & WEST)	⊕
⊕	ANODE	⊕	TREE	⊕	⊕ GUTTER (SOUTH & EAST)	⊕
EXISTING	LEGEND-PLAN	PROPOSED	EXISTING	LEGEND-PLAN	PROPOSED	EXISTING

LOCATION APPROVED UNDERGROUND STRUCTURES

NO. REVISIONS DATE BY

B.M. ELEV. FIELD BOOK #

POSTED TO LBS

CITY OF WINNIPEG
WATER AND WASTE
ENGINEERING DIVISION

DESIGNED BY: SC CHECKED BY: SC
DRAWN BY: CJH APPROVED BY: KZ

HOR. SCALE: 1:250
VERTICAL: 1:50

RELEASED FOR CONSTRUCTION

DATE: 2009 01 28

ENGINEER'S SEAL

ORIGINAL SIGNED BY: S.R.J. COUNROYER
DATE: 09/01/28

THE CITY OF WINNIPEG
WATER AND WASTE DEPARTMENT

2009 WATERMAIN RENEWALS
CONTRACT 1
NOTRE DAME AVENUE
7.5 E OF FRANCES STREET TO
48 E OF CARLTON STREET

SHEET 3 of 4
CITY DRAWING NUMBER: D-11663