

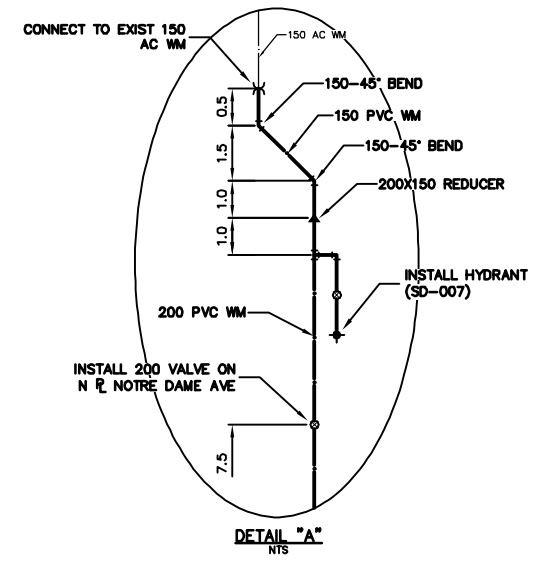
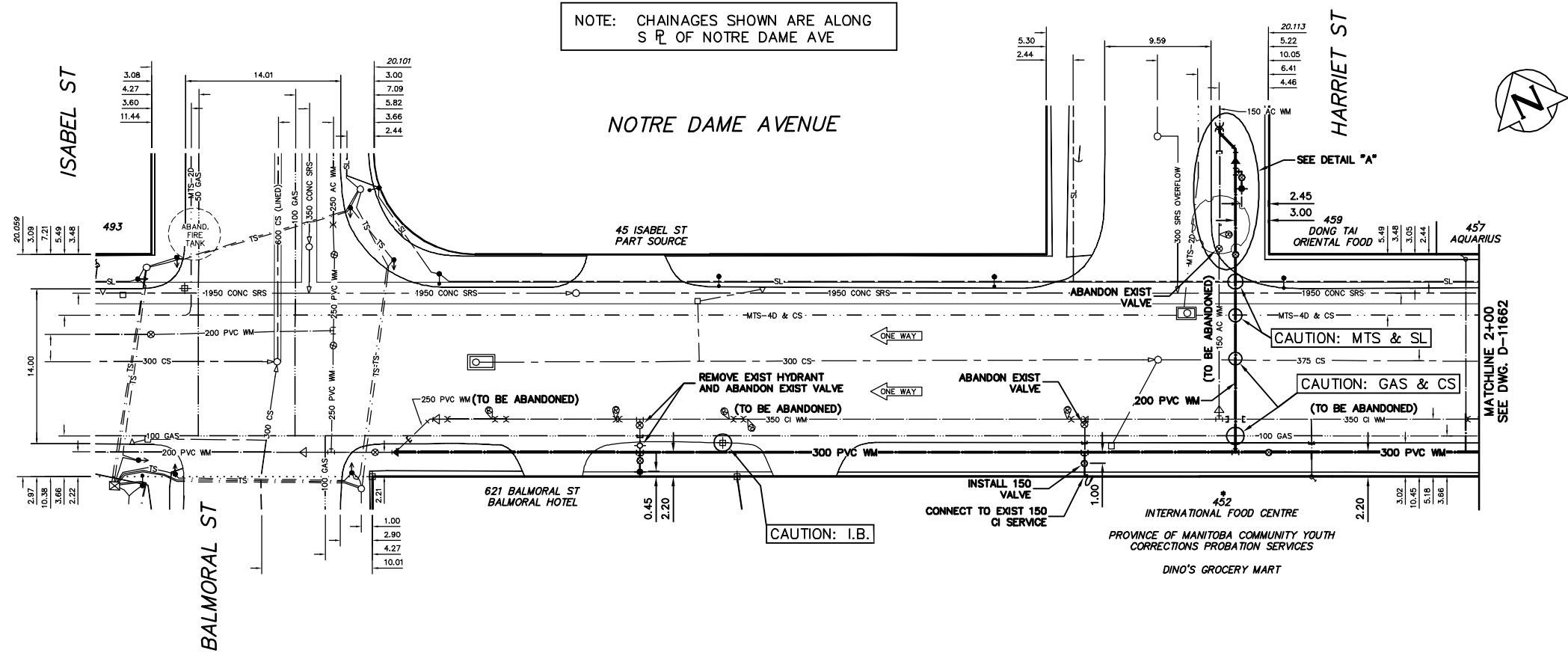
- CONSTRUCTION NOTES**
1. EXPOSE EXISTING WATERMAIN & CONFIRM INVERTS PRIOR TO CONSTRUCTION.
 2. CONFIRM LOCATION OF ALL SERVICES IN THE FIELD.
 3. INSTALL WATERMAIN BY TRENCHLESS METHODS.
 4. TRENCHES AND EXCAVATIONS WITHIN 1 METRE OF A PAVED AREA INCLUDING SIDEWALKS SHALL BE CLASS 3 BACKFILL.
 5. ALL MATERIALS SHALL CONFORM TO THE CITY OF WINNIPEG STANDARD CONSTRUCTION SPECIFICATIONS.
 6. MINIMUM COVER TO TOP OF WATERMAIN SHALL BE 2.4 m.
 7. REPLACE ALL EXISTING LEAD SERVICES FROM PROPOSED WATERMAIN TO €.
 8. NOTIFY ALL AFFECTED RESIDENTS AND BUSINESSES 24 HOURS IN ADVANCE OF ANY WATER SHUTDOWNS OR DISRUPTION OF SERVICE.

WATER SERVICE INFORMATION

ADDRESS	SIZE(mm) & TYPE (STREET)	SIZE(mm) & TYPE (PROP)	SHORT & LONG MEASUREMENT	CORP. LOCATION	REMARKS
409 NOTRE DAME AVE	20 COPPER	20 COPPER	7.21 SNL BLDG	0.3 N OF S/C	SERVICED OF FRANCES
419 NOTRE DAME AVE	150 COPPER	150 COPPER	15.24>NNL NOTRE DAME		SERVICED OF GERTIE
SPRINKLER	-	-	80.28>NNL NOTREDAME		OPP VALVE
420 NOTRE DAME AVE	25 COPPER	25 COPPER	4.07 WEL BLDG	1.0 E OF S/C	RECONNECT SERVICE
422 NOTRE DAME AVE	20 COPPER	20 COPPER	2.55 WEL FRANCES		
422 NOTRE DAME AVE	20 COPPER	20 COPPER	0.80 WEL BLDG	3.2 W OF S/C	RENEW TO € WITH 25 COPPER
425 NOTRE DAME AVE	20 COPPER	20 COPPER	9.12 WEL FRANCES		
425 NOTRE DAME AVE	20 LEAD	20 LEAD			
425 NOTRE DAME AVE	20 COPPER	20 COPPER	17.07>NNL NOTRE DAME		SERVICED OFF GERTIE
452 NOTRE DAME AVE	25 COPPER	25 COPPER	34.77 EWL BLDG	OPP S/C	RECONNECT SERVICE
452 NOTRE DAME AVE	25 COPPER	25 COPPER	3.88 EEL HARRIET		
452 NOTRE DAME AVE	150 COPPER	150 COPPER	14.37 EWL BLDG		
457 NOTRE DAME AVE	20 COPPER	20 COPPER	3.42 EWL HARRIET		
457 NOTRE DAME AVE	38 COPPER	38 COPPER	2.55 EWL BLDG	OPP S/C	RECONNECT SERVICE
459 NOTRE DAME AVE	20 COPPER	20 COPPER	17.33 EEL HARRIET		
459 NOTRE DAME AVE	20 COPPER	20 COPPER	10.15 SNL BLDG	OPP S/C	SERVICED OFF HARRIET
459 NOTRE DAME AVE	20 COPPER	20 COPPER	14.63>NNL NOTRE DAME		
621 BALMORAL ST	150 CI	100 CI	9.70 NSL BLDG		SERVICED OFF BALMORAL
621 BALMORAL ST	150 CI	100 CI	11.99>NNL CUMBERLAND		OPP VALVE
45 ISABEL ST	25 COPPER	25 COPPER	3.60 NSL BLDG	1.5 N OF S/C	SERVICED OFF ISABEL
45 ISABEL ST	25 COPPER	25 COPPER	36.38>NNL NOTRE DAME		

* SERVICES TO BE RENEWED TO € UPON CONFIRMATION BY THE CONTRACTOR OF EXISTING 1/2" COPPER OR LEAD SERVICE. OBTAIN APPROVAL FROM CONTRACT ADMINISTRATOR PRIOR TO RENEWAL.

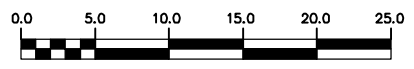
NOTE: CHAINAGES SHOWN ARE ALONG S/R OF NOTRE DAME AVE



METRIC
WHOLE NUMBERS INDICATE MILLIMETRES
DECIMALIZED NUMBERS INDICATE METRES

NOTE: ALL VALVES TO BE INSTALLED COUNTERCLOCKWISE TO CLOSE WITH RED OPERATING NUT

WARNING
IF POWER EQUIPMENT OR EXPLOSIVES ARE TO BE USED FOR EXCAVATION ON THIS PROJECT THE CONTRACTOR MUST:
1) NOTIFY THE GAS COMPANY OF THE PROPOSED LOCATION OF EXCAVATION.
2) TAKE PRECAUTION TO AVOID DAMAGE TO GAS COMPANY INSTALLATIONS.
SEE PROVINCIAL REGULATION 210/72 FOR DETAILS



200 WM	WATERMAIN	200 WM	SL - HYDRO	150 WM	WATERMAIN	150 WM
⊕	HYDRANT	⊕	MTS	⊕	HYDRANT	⊕
⊙	VALVE	⊙	TRAFFIC SIGNALS	⊙	VALVE	⊙
525 LDS	LAND DRAINAGE SEWER	525 LDS	GAS	300 LDS	LAND DRAINAGE SEWER	300 LDS
375 WWS	WASTEWATER SEWER	375 WWS	SURVEY BAR	250 WWS	WASTEWATER SEWER	250 WWS
○	MANHOLE	○	FENCE	⊕	PROFILE	⊕
□	CATCH BASIN	□	POLE - HYDRO, MTS	⊕	GROUND ABOVE PIPE	⊕
▽	CURB INLET	▽	CURB STOP	⊕	€ DITCH (NORTH & WEST)	⊕
◁	REDUCER	◁	GUY ANCHOR	⊕	€ DITCH (SOUTH & EAST)	⊕
X	COUPLER	X	LIGHT STANDARD	⊕	GUTTER (NORTH & WEST)	⊕
⊕	ANODE	⊕	TREE	⊕	GUTTER (SOUTH & EAST)	⊕
EXISTING	LEGEND-PLAN	PROPOSED	EXISTING	LEGEND-PLAN	PROPOSED	EXISTING
EXISTING	LEGEND-PROFILE	PROPOSED	EXISTING	LEGEND-PROFILE	PROPOSED	EXISTING

LOCATION APPROVED	B.M. ELEV.	FIELD BOOK #
UNDERGROUND STRUCTURES	POSTED TO LBS	
SUPV. U/G STRUCTURES COMMITTEE	DATE	
NOTE:		
LOCATION OF UNDERGROUND STRUCTURES AS SHOWN ARE BASED ON THE BEST INFORMATION AVAILABLE BUT NO GUARANTEE IS GIVEN THAT ALL EXISTING UTILITIES ARE SHOWN OR THAT THE GIVEN LOCATIONS ARE EXACT. CONFIRMATION OF EXISTENCE AND EXACT LOCATION OF ALL SERVICES MUST BE OBTAINED FROM THE INDIVIDUAL UTILITIES BEFORE PROCEEDING WITH CONSTRUCTION.		
NO. REVISIONS	DATE	BY

CITY OF WINNIPEG
WATER AND WASTE
ENGINEERING DIVISION

DESIGNED BY: SC
CHECKED BY: SC

DRAWN BY: CJH
APPROVED BY: KZ

HOR. SCALE: 1:250
VERTICAL: 1:50

RELEASED FOR CONSTRUCTION

DATE: 2009 01 28

ENGINEER'S SEAL

ORIGINAL SIGNED BY
S.R.J. COUNROYER
09/01/28

THE CITY OF WINNIPEG
WATER AND WASTE DEPARTMENT

2009 WATERMAIN RENEWALS
CONTRACT 1
NOTRE DAME AVENUE
ISABEL STREET TO
19 E OF HARRIET STREET

SHEET 1 OF 4
CITY DRAWING NUMBER
D-11661

BID OPPORTUNITY 47-2009
FILENAME: Notredome.dwg
PLOT DATE: 2009 01 28