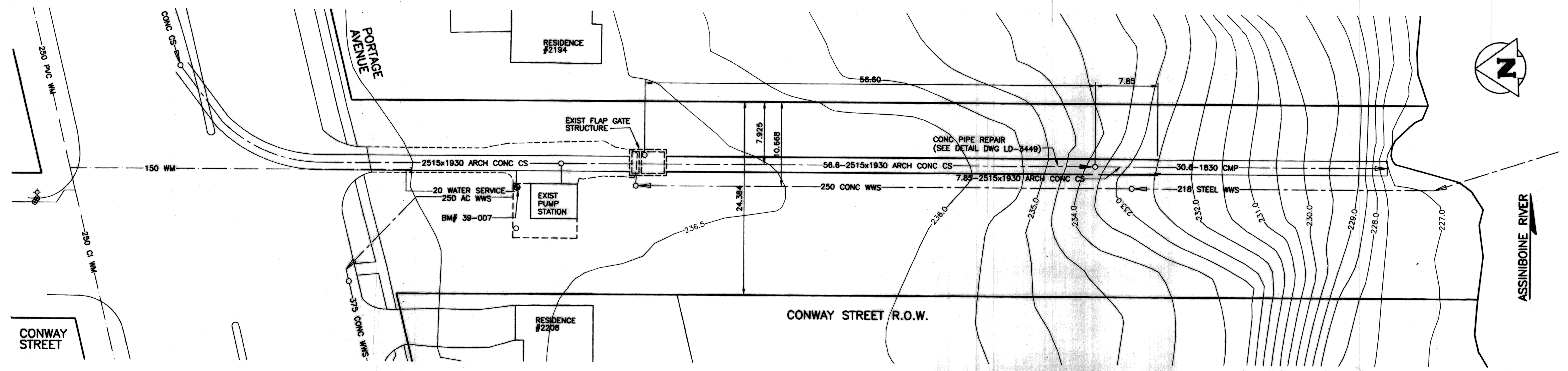
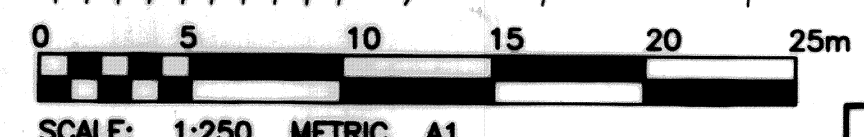


PROPERTY LIMITS DELINEATION
 DELINEATION OF PROPERTY LIMITS AS SHOWN ON THIS DWG DOES NOT REPRESENT A "LEGAL SURVEY". KGS GROUP MAKES NO REPRESENTATION OR WARRANTY AS TO THE ACCURACY OF PROPERTY LIMITS DELINEATED ON THIS DWG, NOR ON THE DIMENSIONAL ACCURACY OF DWG FEATURES RELATIVE TO THOSE PROPERTY LIMITS.



CONWAY STREET OUTFALL AS-42

AS-CONSTRUCTED
 WATER & WASTE DEPARTMENT
 PROJECT COMPLETION DATE 25 APRIL 2007



SCALE: 1:250 METRIC A1
 1:500 METRIC A3
METRIC
 WHOLE NUMBERS INDICATE MILLIMETRES
 DECIMALIZED NUMBERS INDICATE METRES

APEGN
 Certificate of Authorization
 KGS Group
 No. 245 Expiry: April 30, 2008

| | | | | | |
|----------|---------------------|----------|----------------|----------------|----------|
| 150 WM | WATERMAIN | 150 WM | HYDRO | | |
| 300 LBS | HYDRANT | 300 LBS | M.T.S. | | |
| 250 WWS | VALVE | 250 WWS | PROPERTY LINE | | |
| | LAND DRAINAGE SEWER | | SURVEY BAR | | |
| | WASTE WATER SEWER | | LIGHT STANDARD | | |
| | MANHOLE | | HYDRO POLE | | |
| | CATCH BASIN | | GUY WIRE | | |
| | CURB INLET | | SIGN | | |
| | JUNCTIONS | | BUSH LINE | | |
| | CULVERT | | FENCE | | |
| | GAS | 231.334 | ELEVATION | 32.231 | |
| EXISTING | LEGEND-PLAN | PROPOSED | EXISTING | LEGEND-PROFILE | PROPOSED |

LOCATION APPROVED UNDERGROUND STRUCTURES
 SUPV. U/G STRUCTURES DATE COMMITTEE
 NOTE:
 LOCATION OF UNDERGROUND STRUCTURES AS SHOWN ARE BASED ON THE BEST INFORMATION AVAILABLE BUT NO GUARANTEE IS GIVEN THAT THE GIVEN LOCATIONS ARE EXACT. CONFIRMATION OF EXISTENCE AND EXACT LOCATION OF ALL SERVICES MUST BE OBTAINED FROM THE INDIVIDUAL UTILITIES BEFORE PROCEEDING WITH CONSTRUCTION.

| | | |
|-------------|-------------------------|----------------------------------------------------------------------------------------------------------------|
| B.M. 39-007 | ELEV. 236.708m | 74M809-TBLT. IN CONC. PLATFORM OF PUMPHOUSE, S. OF PORTAGE AVE. CONWAY ST. 0.4m S.W. OF N.E. COR. OF PLATFORM. |
| NO. | REVISIONS | DATE BY |
| 3 | AS-BUILT | 19/03/07 RJH |
| 2 | ISSUED FOR CONSTRUCTION | 12/12/06 RJH |
| 1 | ISSUED FOR TENDER | 11/12/06 RJH |
| 0 | ISSUED FOR TENDER | 07/12/06 RJH |
| A | ISSUED FOR REVIEW | 05/12/06 RJH |

KGS GROUP
 CONSULTING ENGINEERS & PROJECT MANAGERS
 WINNIPEG (204) 806-1208
 THUNDER BAY (807) 345-2233

| | | | |
|-------------|-------|----------------------------|----------|
| DESIGNED BY | RO | CHECKED BY | RJH |
| DRAWN BY | DW | APPROVED BY | |
| HOR. SCALE: | 1:250 | RELEASED FOR CONSTRUCTION: | |
| VERTICAL: | 1:50 | DATE | 27/11/06 |

ENGINEER'S SEAL

 CONSULTANT DRAWING NO.
06-107-23

THE CITY OF WINNIPEG
 WATER & WASTE DEPARTMENT
 CONWAY OUTFALL REHABILITATION
OUTFALL (AS-42)

| | |
|-------------------------|----|
| SHEET | OF |
| 01 | 02 |
| CAD FILE DRAWING NUMBER | |
| 06-107-23 PLOT.DWG | |
| CITY DRAWING NUMBER | |
| LD-3448 | |

P:\PROJECTS\2006\06-107-23\MUN\DWGS\PLT.DWG
 A-1 PLOT 1:1