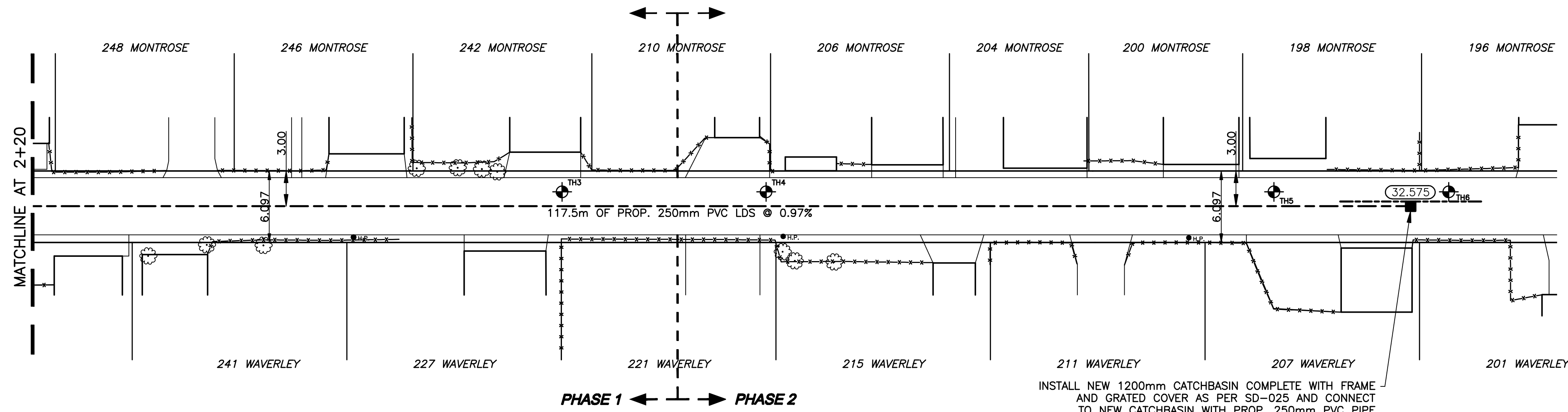
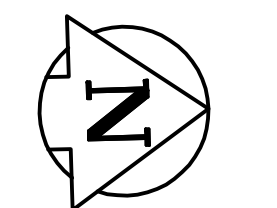


CHAINAGE ALONG CENTER OF ROW

MONTROSE / WAVERLEY ALLEY LDS



INSTALL NEW 1200mm CATCHBASIN COMPLETE WITH FRAME AND GRATED COVER AS PER SD-025 AND CONNECT TO NEW CATCHBASIN WITH PROP. 250mm PVC PIPE
 RIM ELEV. 32.575
 N. INV. 31.40
 S. INV. 31.40
 SUBDRAIN INV. 31.69

BENCHMARK:
 S.E. COR. OF GROSEVENOR AVE. & LANE E. OF ASH ST.
 19mm DIA. x 6.1m I.B. IN VALVE BOX, 2.0m E. OF E.L. OF LANE & 1.0m S. OF S.L. OF GROSEVENOR AVE.

METRIC
 WHOLE NUMBERS INDICATE MILLIMETRES
 DECIMALIZED NUMBERS INDICATE METRES

INSTALL PVC SUBDRAIN BETWEEN STA. 3+31.50 AND 3+43.50



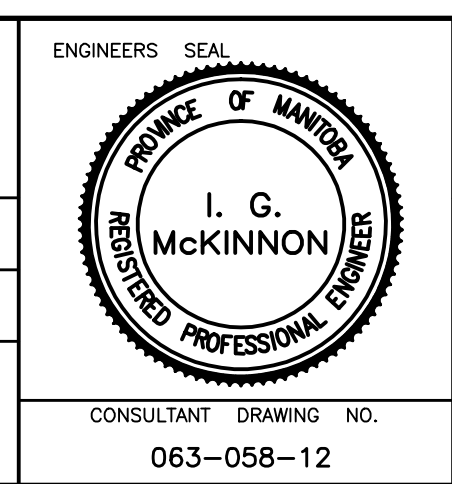
WATERMAIN	REDUCER	150mm W.M.	WATERMAIN VALVE	150mm W.M.
HYDRANT	PLUG	300mm L.D.S.	LAND DRAINAGE SEWER VALVE	300mm L.D.S.
VALVE	TRAFFIC SIGNAL	250mm W.W.S.	WASTE WATER SEWER	250mm W.W.S.
LAND DRAINAGE SEWER	GAS		HYDRO	
WASTE WATER SEWER	M.T.S.		SURVEY BAR	
STEAM HT.			CURB STOP	
MANHOLE			C.B. LEAD	
CATCH BASIN			TREE	
CURB INLET			LAMP STANDARD	
BEND				
ANODE				
EXISTING	LEGEND - PLAN	PROPOSED	EXISTING	LEGEND - PROFILE
			PROPOSED	PROPOSED

LOCATION APPROVED
 SUPV. U/G STRUCTURES DATE
 COMMITTEE
 NOTE:
 LOCATION OF UNDERGROUND STRUCTURES AS SHOWN ARE BASED ON THE BEST INFORMATION AVAILABLE BUT NO GUARANTEE IS GIVEN THAT ALL EXISTING UTILITIES ARE SHOWN OR THAT THE GIVEN LOCATIONS ARE EXACT. CONFIRMATION OF EXISTENCE AND EXACT LOCATION OF ALL SERVICES MUST BE OBTAINED FROM THE INDIVIDUAL UTILITIES BEFORE PROCEEDING WITH CONSTRUCTION.

B.M. ELEV.	QWB.M. 51-030	232.751
NO.	REVISIONS	DATE BY

GENIVAR
 200 TACHE AVENUE WINNIPEG, MANITOBA R2H 1A7
 PH: (204)-233-2113 FAX: (204)-233-2080

DESIGNED BY	R.H.	CHECKED BY	S.M.
DRAWN BY	R.H.	APPROVED BY	I.McK.
HOR. SCALE:	1:250	RELEASED FOR CONSTRUCTION	
VERT. SCALE:	1:50	DATE	JUNE 2009



THE CITY OF WINNIPEG
 WATER AND WASTE DEPARTMENT

2009 ALLEY RENEWALS
 MONTROSE / WAVERLEY ALLEY
 LAND DRAINAGE SEWER
 FROM MATCHLINE AT STATION 2+20
 TO CATCHBASIN AT STATION 3+37.50

CITY DRAWING NO.
 SHEET 2 OF 2
 465-2009