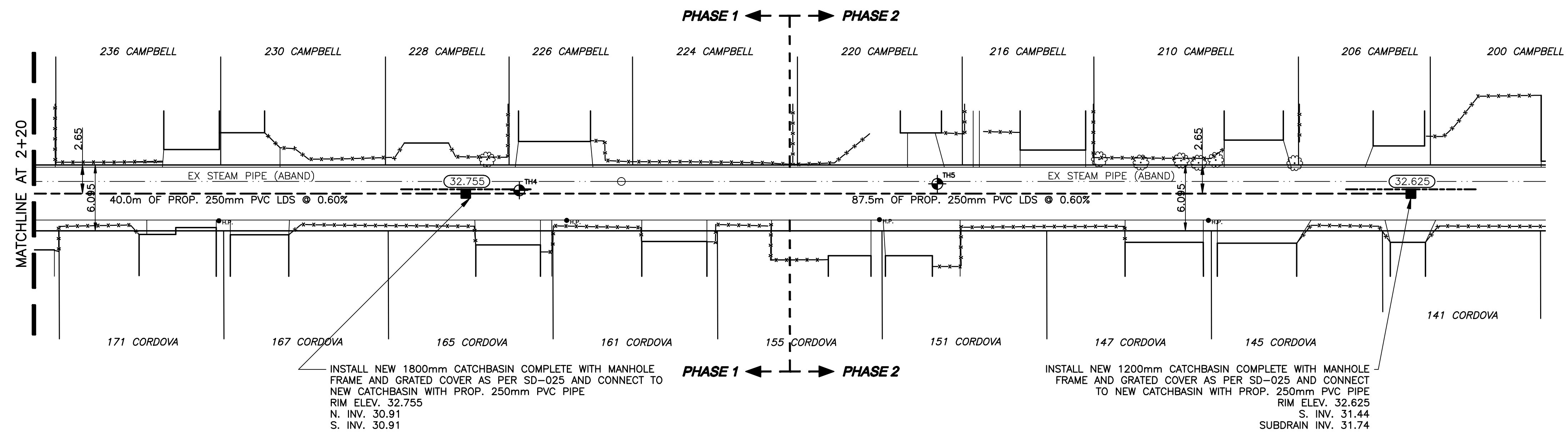
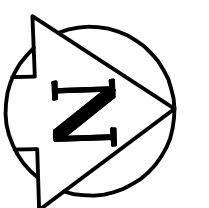


CHAINAGE ALONG CENTER OF ROW

### CAMPBELL / CORDOVA ALLEY LDS



INSTALL NEW 1800mm CATCHBASIN COMPLETE WITH MANHOLE FRAME AND GRATED COVER AS PER SD-025 AND CONNECT TO NEW CATCHBASIN WITH PROP. 250mm PVC PIPE  
 RIM ELEV. 32.755  
 N. INV. 30.91  
 S. INV. 30.91  
 SUBDRAIN INV. 31.87

INSTALL NEW 1200mm CATCHBASIN COMPLETE WITH MANHOLE FRAME AND GRATED COVER AS PER SD-025 AND CONNECT TO NEW CATCHBASIN WITH PROP. 250mm PVC PIPE  
 RIM ELEV. 32.625  
 S. INV. 31.44  
 SUBDRAIN INV. 31.74

BENCHMARK:  
 S.W. COR. KINGSWAY & BOREBANK ST., TBLT. IN 4.6m  
 CONC. PILE, 2.5m E. OF W.L. BOREBANK ST. & 0.6m S. OF S.L. KINGSWAY

METRIC  
 WHOLE NUMBERS INDICATE MILLIMETRES  
 DECIMALIZED NUMBERS INDICATE METRES

INSTALL PVC SUBDRAINS BETWEEN  
 STA. 2+54 AND 2+66 AND  
 STA. 3+41.50 AND 3+53.50



WATERMAIN	REDUCER	150mm W.M.	WATERMAIN	150mm W.M.	LOCATION APPROVED
HYDRANT	PLUG	300mm L.D.S.	VALVE	300mm L.D.S.	
VALVE	TRAFFIC SIGNAL	250mm W.W.S.	GAS	250mm W.W.S.	SUPPLY U/G STRUCTURES DATE
LAND DRAINAGE SEWER	HYDRO	M.T.S.	WASTE WATER SEWER	250mm W.W.S.	
WASTE WATER SEWER	SURVEY BAR	▲	STEAM HT.	▲	NOTE: LOCATION OF UNDERGROUND STRUCTURES AS SHOWN ARE BASED ON THE BEST INFORMATION AVAILABLE BUT NO GUARANTEE IS GIVEN THAT ALL EXISTING UTILITIES ARE SHOWN OR THAT THE GIVEN LOCATIONS ARE EXACT. CONFIRMATION OF EXISTENCE AND EXACT LOCATION OF ALL SERVICES MUST BE OBTAINED FROM THE INDIVIDUAL UTILITIES BEFORE PROCEEDING WITH CONSTRUCTION.
MANHOLE	CURB STOP	▲	JUNCTIONS	▲	
CATCH BASIN	C.B. LEAD	▲	CULVERT	▲	
CURB INLET	TREE	●			
BEND	LAMP STANDARD	●			
ANODE		●			
EXISTING	LEGEND - PLAN	PROPOSED	EXISTING	LEGEND - PROFILE	PROPOSED

B.M. ELEV.	QWB#	51-036	233.341
NO.	REVISIONS	DATE	BY

**GENIVAR**  
 10 PRINCE WAY WINNIPEG, MANITOBA R2J 3J8  
 PH: (204)-233-2113 FAX: (204)-233-2080

DESIGNED BY: R.H. CHECKED BY: S.M.  
 DRAWN BY: R.H. APPROVED BY: I.McK.  
 HOR. SCALE: 1:250  
 VERT. SCALE: 1:50  
 DATE: JUNE 2009

ENGINEER'S SEAL  
  
 CONSULTANT DRAWING NO. 063-058-10

**THE CITY OF WINNIPEG**  
 WATER AND WASTE DEPARTMENT

2009 ALLEY RENEWALS  
 CAMPBELL / CORDOVA ALLEY  
 LAND DRAINAGE SEWER  
 FROM MATCHLINE AT STATION 2+20  
 TO CATCHBASIN AT STATION 3+47.50

CITY DRAWING NO. SHEET 2 OF 2  
 465-2009