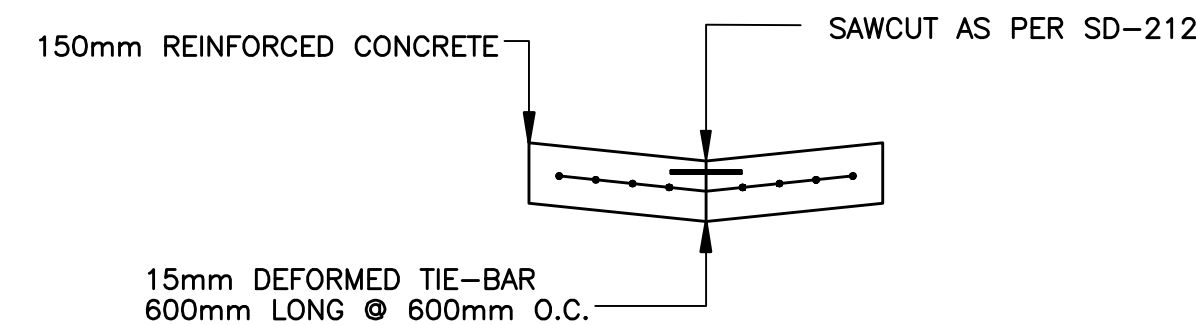
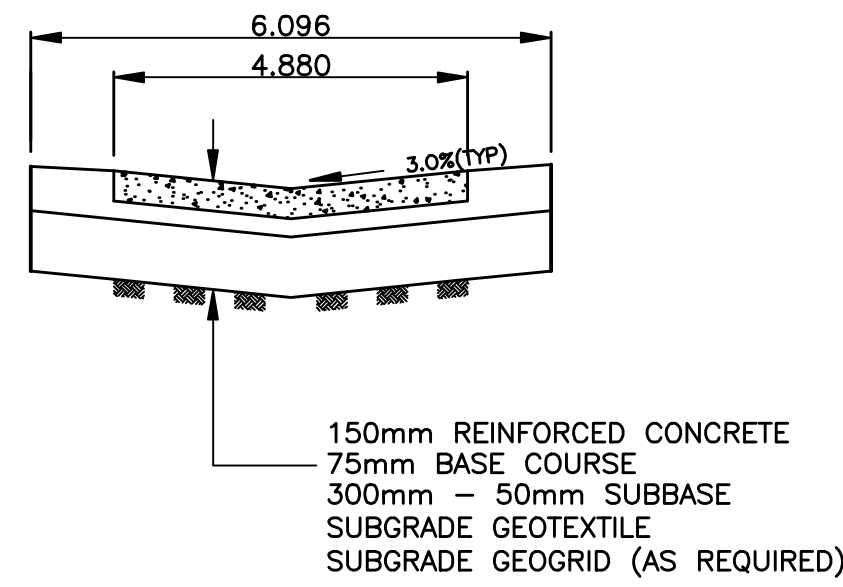


NOTES:

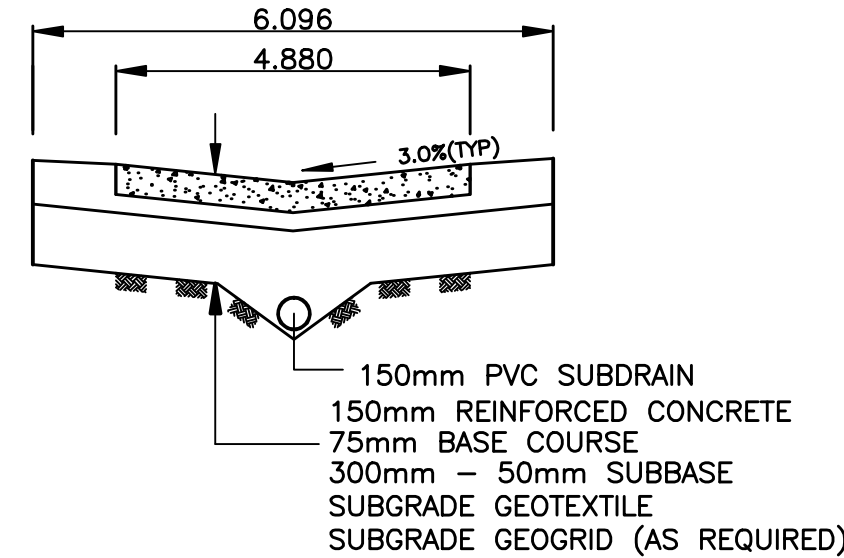
1. ISOLATE EXISTING HYDRO POLES AS DIRECTED BY CONTRACT ADMINISTRATOR
2. RENEW EXISTING APPROACHES AS DIRECTED BY CONTRACT ADMINISTRATOR
3. EXTEND SUBDRAINS AS DIRECTED BY CONTRACT ADMINISTRATOR
4. ADDITIONAL EXCAVATION AND INSTALLATION OF SUBGRADE GEOGRID TO BE DETERMINED BY CONTRACT ADMINISTRATOR



TYPICAL PAVEMENT CROSS SECTION
N.T.S.

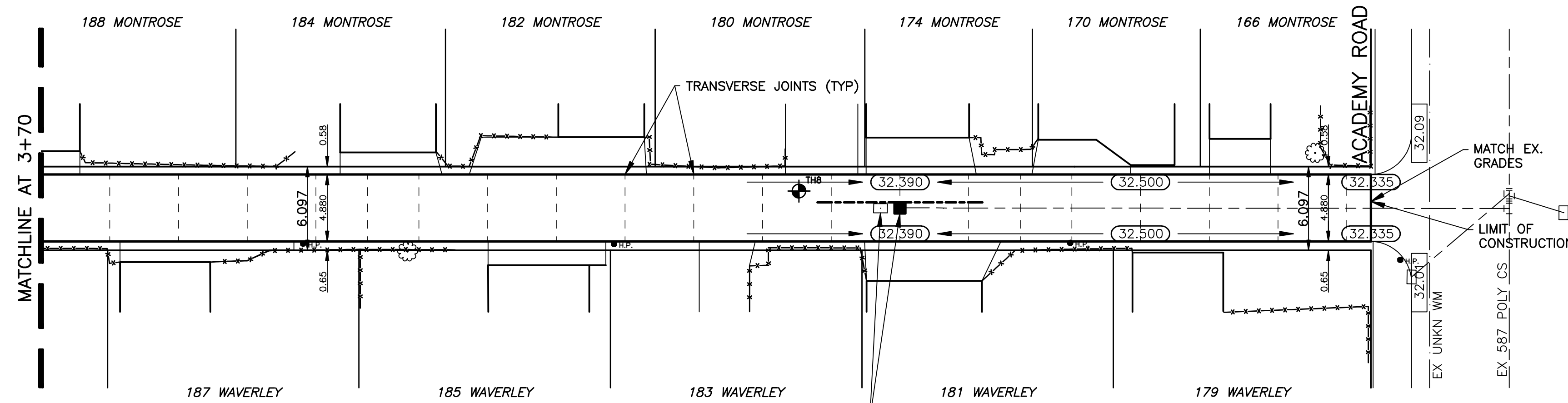


ALLEY CROSS SECTION
N.T.S.



TYPICAL ALLEY CROSS SECTION WITH SUBDRAIN
N.T.S.

MONTROSE / WAVERLEY ALLEY



REMOVE AND REPLACE EX. CATCHBASIN WITH NEW 1800mm CATCHBASIN COMPLETE WITH FRAME AND GRATED COVER AS PER SD-025
RIM ELEV. 32.315
N. INV. 30.41
SUBDRAIN INV. 31.43

BENCHMARK:
S.E. COR. OF GROSEVOR AVE. & LANE E. OF ASH ST.
19mm DIA. x 6.1m I.B. IN VALVE BOX, 2.0m E. OF E.L. OF LANE & 1.0m S. OF S.L. OF GROSEVOR AVE.

METRIC
WHOLE NUMBERS INDICATE MILLIMETRES
DECIMAL NUMBERS INDICATE METRES

INSTALL PVC SUBDRAIN BETWEEN
STA. 4+26.5 AND 4+38.5

—	WATERMAIN	—	HYDRO	—	CENTER LINE	—	LOCATION APPROVED
—	HYDRANT	—	M.T.S.	—	WEST GUTTER LINE	—	B.M. ELEV.
—	VALVE	—	CONCRETE	—	EAST GUTTER LINE	—	QMBM: 51-030
—	LAND DRAINAGE SEWER	—	ASPHALT	—	WATERMAIN	—	232.751
—	WASTE WATER SEWER	—	PROPERTY LINE	—	VALVE	—	
—	MANHOLE	—	SURVEY BAR	—	LAND DRAINAGE SEWER	—	
—	CATCH BASIN	—	CURB STOP	—	WASTE WATER SEWER	—	
—	CURB INLET	—	C.B. LEAD	—	JUNCTIONS	—	
—	TRAFFIC SIGNAL	—	SIDEWALK	—	TESTHOLE	—	
—	STEAM HT.	—	SIDEWALK RAMP	—	ASPH./CONC. PAD	—	
—	GAS	—	ELEVATIONS	—	GARAGE PAD	—	
—	EXISTING	—	LEGEND - PLAN	—	PROPOSED	—	

NO.	REVISIONS	DATE	BY

GENIVAR
200 TACHE AVENUE WINNIPEG, MANITOBA R2H 1A7
PH: (204)-233-2113 FAX: (204)-233-2080

DESIGNED BY: R.H. CHECKED BY: S.M.
DRAWN BY: R.H. APPROVED BY: I.McK.
HOR. SCALE: 1:250
VERT. SCALE: 1:10
RELEASED FOR CONSTRUCTION: DATE

ENGINEERS SEAL
PROVINCE OF MANITOBA
REGISTERED PROFESSIONAL ENGINEER
I. G. MCKINNON

THE CITY OF WINNIPEG
PUBLIC WORKS DEPARTMENT

2009 ALLEY RENEWALS
MONTROSE / WAVERLEY ALLEY
LANE PAVEMENT
FROM MATCHLINE AT STATION 3+70
TO ACADEMY ROAD

CITY DRAWING NO. SHEET 3 OF 3
465-2009

