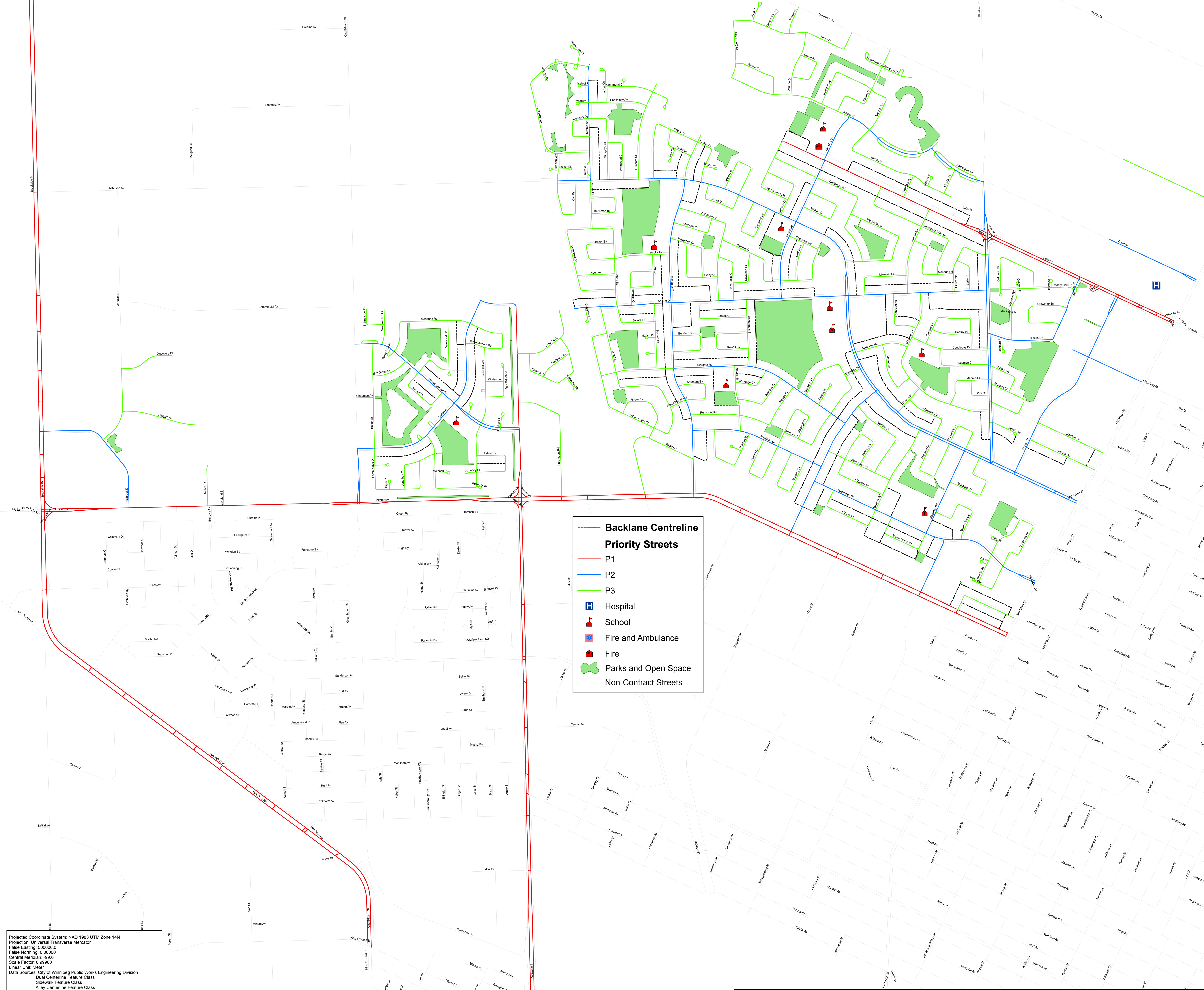
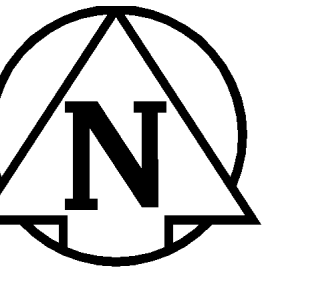


The City of Winnipeg North Area Northwest Snow Contract Zone Backlanes



Backlane Centreline
Priority Streets

- P1
- P2
- P3
- H Hospital
- 🏫 School
- 🚒 Fire and Ambulance
- 🚒 Fire
- 🌳 Parks and Open Space
- Non-Contract Streets

Projected Coordinate System: NAD 1983 UTM Zone 14N
 Projection: Universal Transverse Mercator
 False Easting: 500000.0
 False Northing: 0.00000
 Central Meridian: -99.0
 Scale Factor: 0.99960
 Linear Unit: Meter
 Data Sources: City of Winnipeg Public Works Engineering Division
 Dial Centreline Feature Class
 Sidewalk Feature Class
 Alley Centreline Feature Class
 City of Winnipeg Public Works Engineering Division
 City of Winnipeg Public Works Parks and Open Space Division
 Parks Feature Class

The City of Winnipeg North Area
 Northwest Snow Contract Zone
 Drawing 1



The City of Winnipeg
 Public Works Department
 Technical Services Branch
 106-1155 Pacific Avenue
 engineering
 technology services