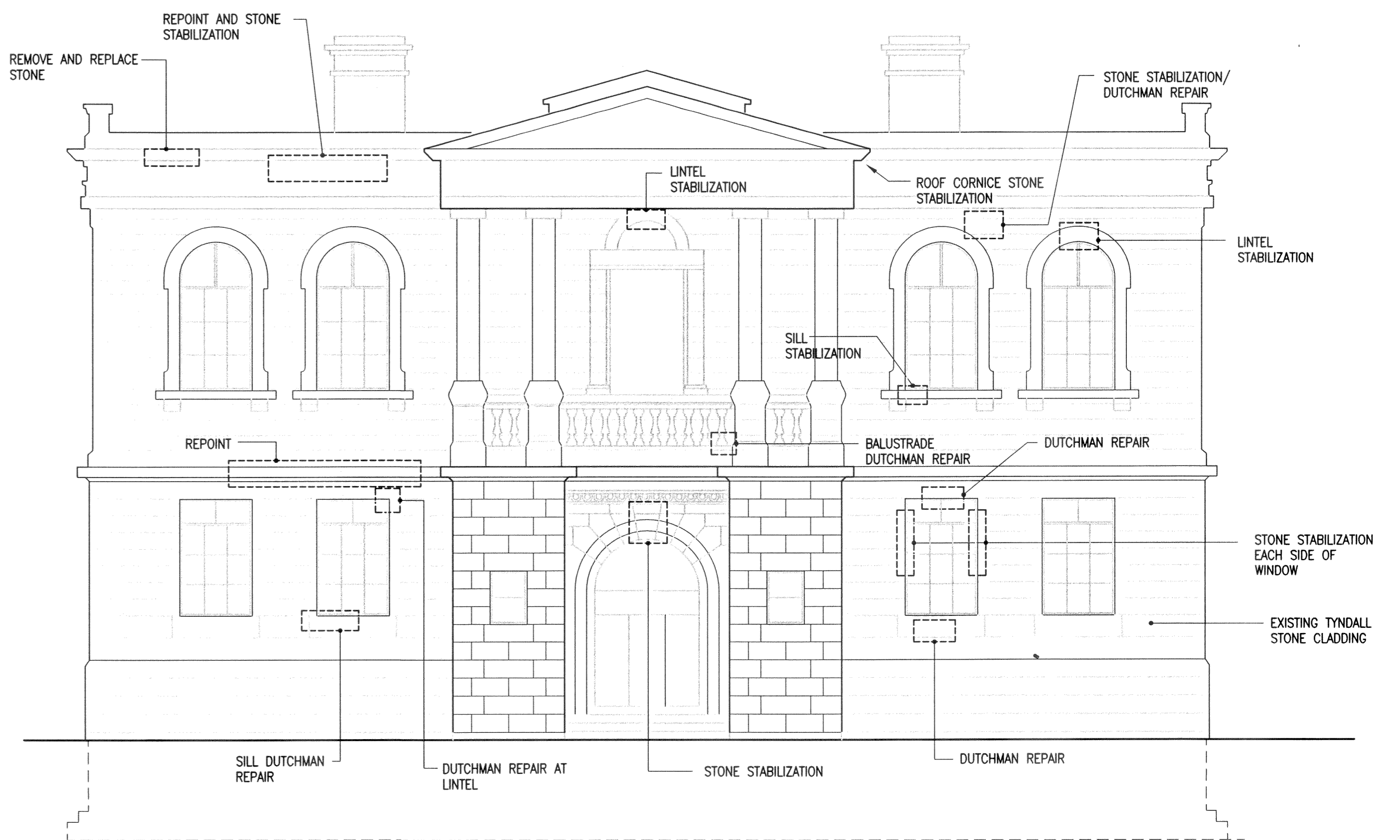
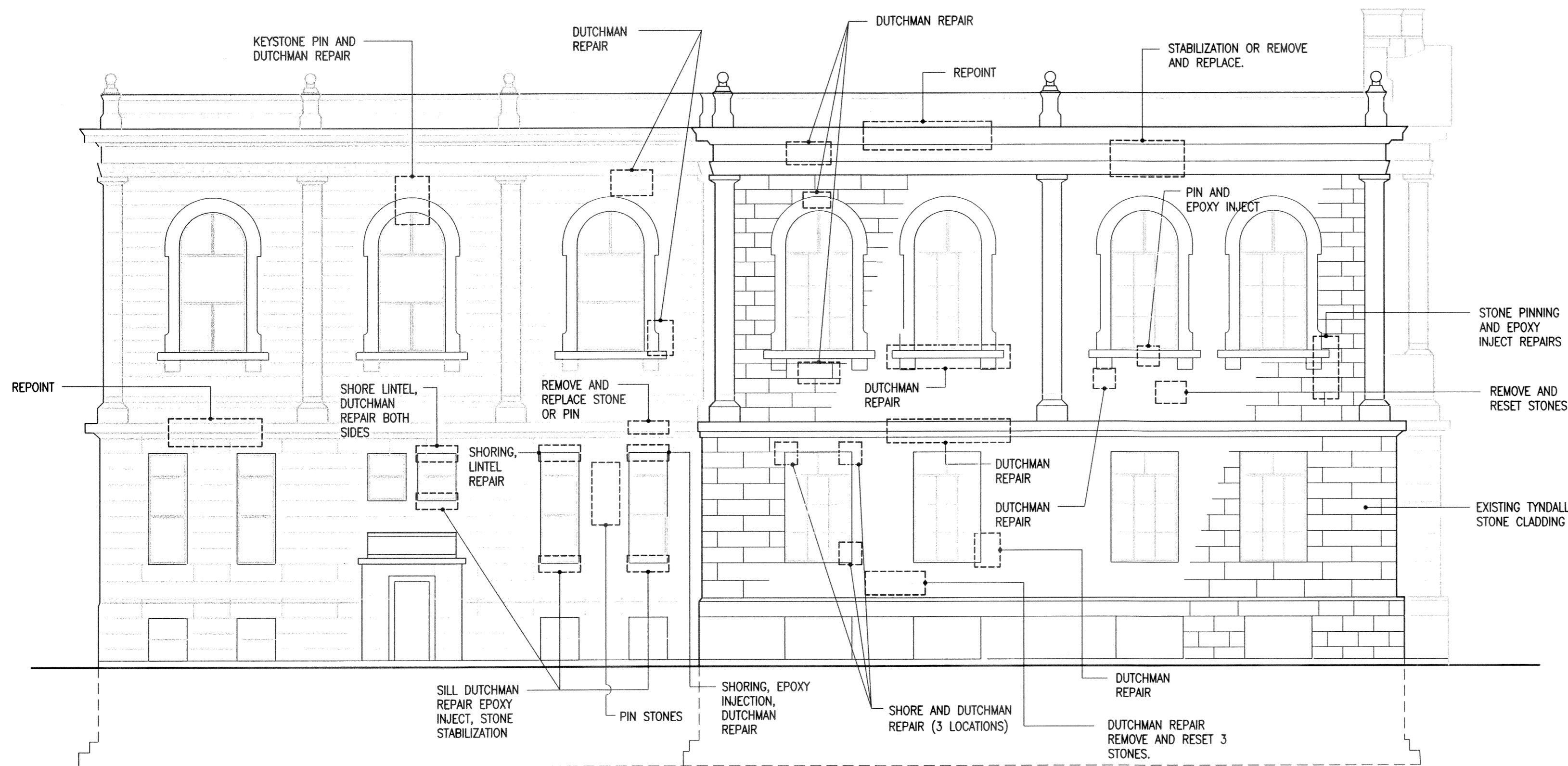


1 WEST ELEVATION
S-4 1/8" = 1'-0"

NOTE: LOCATIONS OF STONE REPAIRS INDICATED ON ELEVATIONS ARE APPROXIMATE ONLY. EXACT LOCATIONS TO BE SITE VERIFIED.

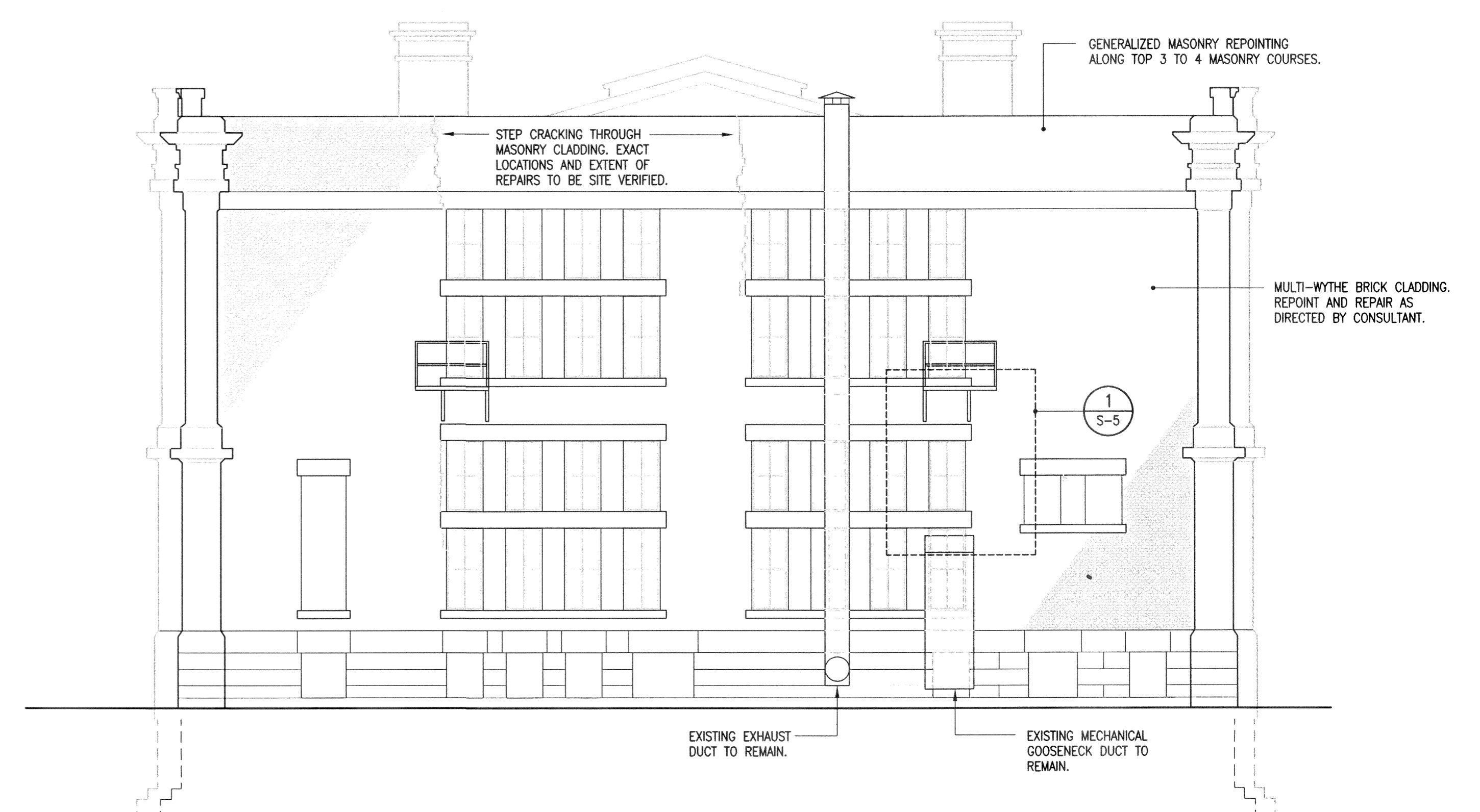


2 NORTH ELEVATION
S-4 1/8" = 1'-0"



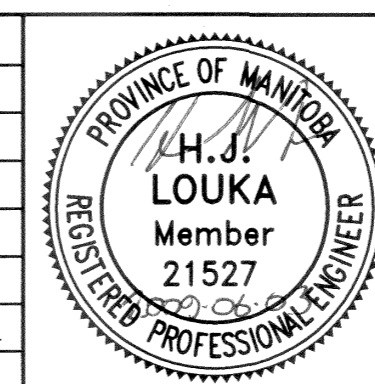
3 EAST ELEVATION
S-4 1/8" = 1'-0"

- GENERAL NOTES:
- REFER TO PROJECT SPECIFICATIONS FOR INFORMATION ON SCOPE OF WORK AND REPAIRS TO BE COMPLETED.
 - DRAWINGS ARE PREPARED BASED ON THE BEST AVAILABLE INFORMATION TRANSCRIBED FROM ORIGINAL DRAWINGS. REVIEW ALL SITE CONDITIONS PRIOR TO PROCEEDING WITH WORK. THE ONUS REMAINS WITH THE CONTRACTOR TO SITE CONFIRM DIMENSIONS PRIOR TO CONSTRUCTION. ADVISE CONTRACT ADMINISTRATOR OF ANY DISCREPANCIES IN EXISTING CONSTRUCTION'S CONFIGURATION, SIZES, LOCATIONS, ETC. WHERE DISCREPANCIES ARE FOUND, DO NOT PROCEED WITHOUT DIRECTION.
 - BARRICADE ALL WORK AREAS FROM PUBLIC ACCESS. PROVIDE ADEQUATE SIGNAGE INDICATING WORK BEEN PERFORMED ABOVE PUBLICLY ACCESSIBLE AREAS. PROTECT ALL AREAS DURING PERIODS WHEN OFF-SITE.



4 SOUTH ELEVATION
S-4 1/8" = 1'-0"

No.	Date	ISSUED FOR TENDER	By
JUNE 3/09			HJL



300-275 Carlton Street
Winnipeg, Manitoba R3C 5R6
T 204. 943. 7501
F 204. 943. 7507

Crosier Kilgour & Partners Ltd.
CONSULTING STRUCTURAL ENGINEERS

The General Contractor shall check & verify all dimensions and report any errors or omissions to the designers.

Project CARNEGIE BUILDING - EXTERIOR MASONRY REPAIRS 380 WILLIAM AVENUE WINNIPEG, MANITOBA						Sheet No. S-4
Sheet Title BUILDING ELEVATIONS						
Design HJL	Drawn HJ	Checked HJL	Scale 1/8" = 1'-0"	Date JUNE 2009	File 2008-245	