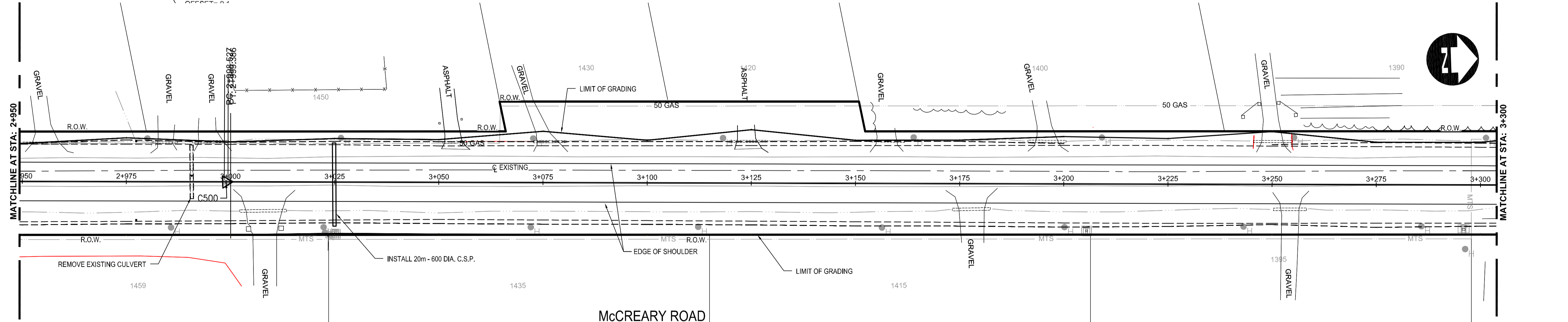
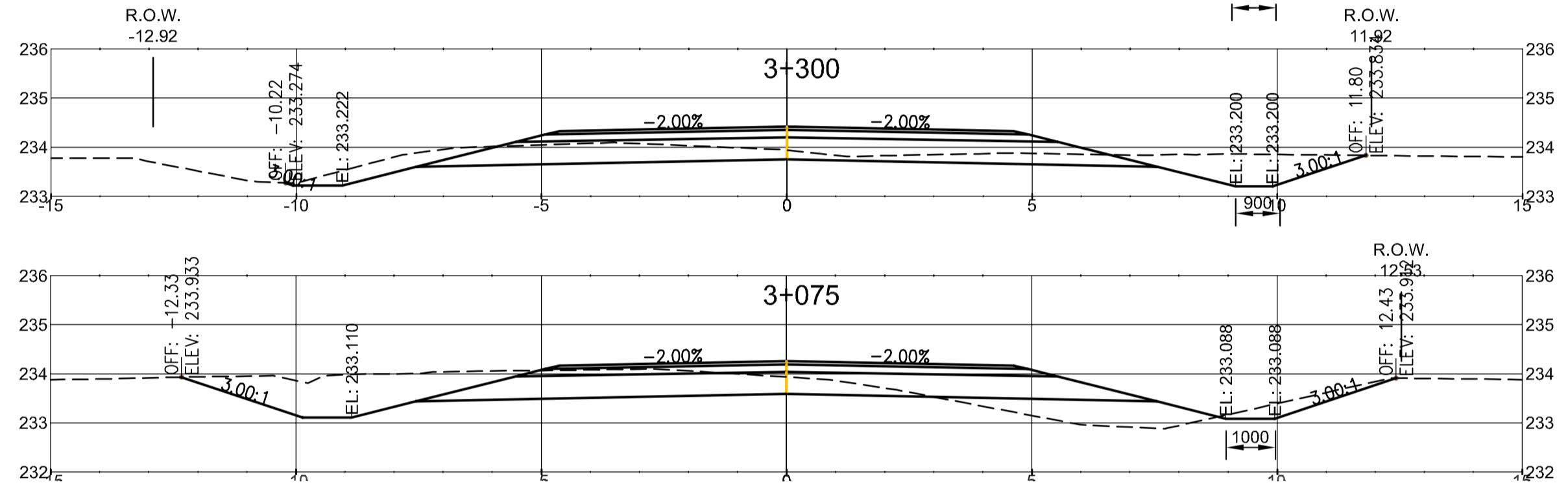
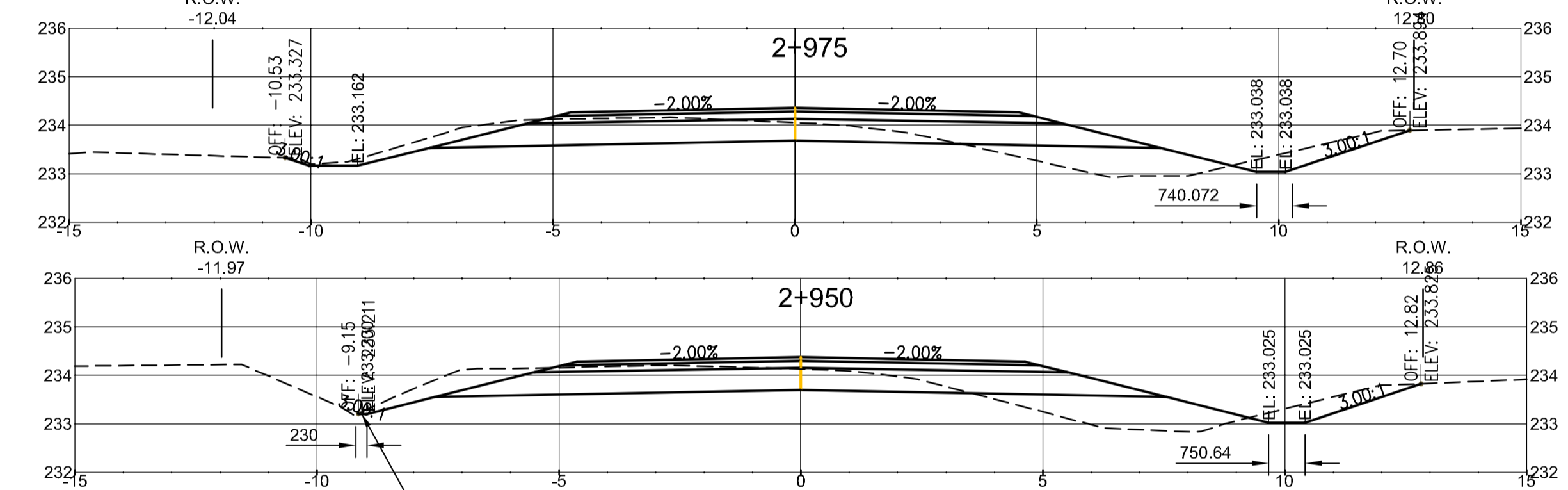


2+950	2+975	3+000	3+025	3+050	3+075	3+100	3+125	3+150	3+175	3+200	3+225	3+250	3+275	3+300
EXISTING GRADE 234.130	234.051	234.002	233.824	233.860	233.934	233.967	233.996	233.986	234.026	234.034	234.030	234.046	233.963	
FINISH GRADE 234.38	234.36	234.32	234.27	234.23	234.26	234.29	234.33	234.36	234.39	234.42	234.45	234.44	234.43	
WEST DITCH 233.200	233.162	233.123	233.085	233.097	233.110	233.122	233.135	233.147	233.160	233.172	233.185	233.197	233.210	
EAST DITCH 233.025	233.038	233.050	233.062	233.075	233.088	233.100	233.112	233.125	233.138	233.150	233.162	233.175	233.188	



McCREARY ROAD

CONSTRUCTION NOTES

1. REGRADE EXISTING DITCHES AS DIRECTED BY CONTRACT ADMINISTRATOR.
2. RENEW EXISTING APPROACHES AS DIRECTED BY CONTRACT ADMINISTRATOR.
3. NEW CULVERTS TO BE INSTALLED ON ALL DRIVEWAYS AS DIRECTED BY CONTRACT ADMINISTRATOR.
4. CHAINAGE ALONG CENTRELINE OF NEW ROAD

WARNING

- IF POWER EQUIPMENT OR EXPLOSIVES ARE TO BE USED FOR EXCAVATION ON THIS PROJECT THE CONTRACTOR MUST:
1. NOTIFY THE GAS COMPANY OF THE PROPOSED LOCATION OF EXCAVATION.
 2. TAKE PRECAUTION TO AVOID DAMAGE TO GAS COMPANY INSTALLATIONS. SEE PROVINCIAL REGULATION 210/72 FOR DETAILS.

METRIC

WHOLE NUMBERS INDICATE MILLIMETRES
DECIMALIZED NUMBERS INDICATE METRES.

150 mm W.M.	WATER MAIN	150 mm W.M.	HYDRO	150 mm W.M.	WATERMAIN	150 mm W.M.
Hydrant	HYDRANT	Hydrant	M.T.S.	Hydrant	HYDRANT	Hydrant
Valve	VALVE	Valve	CONCRETE	Valve	VALVE	Valve
300 mm L.D.S.	LAND DRAINAGE SEWER	300 mm L.D.S.	ASPHALT	300 mm L.D.S.	LAND DRAINAGE SEWER	300 mm L.D.S.
250 mm W.W.S.	WASTE WATER SEWER	250 mm W.W.S.	PLANING	250 mm W.W.S.	WASTE WATER SEWER	250 mm W.W.S.
Manhole	MANHOLE	Manhole	SIDEWALK	Manhole	MANHOLE	Manhole
Catch Basin	CATCH BASIN	Catch Basin	PAVING STONES	Catch Basin	CATCH BASIN	Catch Basin
Curb Inlet	CURB INLET	Curb Inlet	PARTIAL DEPTH REPAIR	Curb Inlet	CURB INLET	Curb Inlet
Junctions	JUNCTIONS	Junctions	PROPERTY LINE	Junctions	JUNCTIONS	Junctions
Culvert	CULVERT	Culvert	SURVEY BAR	Culvert	CULVERT	Culvert
Gas	GAS	Gas	PARAPLEGIC RAMP	Gas	GAS	Gas
EXISTING	LEGEND-PLAN	PROPOSED	EXISTING	LEGEND-PLAN	PROPOSED	EXISTING
EXISTING	LEGEND-PROFILE	PROPOSED	EXISTING	LEGEND-PROFILE	PROPOSED	EXISTING

UNDERGROUND STRUCTURES	B.M. ELEV.
SUPPLY, U/G STRUCTURES COMMITTEE	DATE
NOTE:	
LOCATION OF UNDERGROUND STRUCTURES AS SHOWN ARE BASED ON THE BEST INFORMATION AVAILABLE, BUT NO GUARANTEE IS GIVEN THAT ALL EXISTING UTILITIES ARE SHOWN OR THAT THE GIVEN LOCATIONS ARE EXACT. CONFIRMATION OF EXISTENCE AND EXACT LOCATION OF ALL SERVICES MUST BE OBTAINED FROM THE INDIVIDUAL UTILITIES BEFORE PROCEEDING WITH CONSTRUCTION.	

DESIGNED BY	DTM
DRAWN BY	DTM
CHECKED BY	ORIGINAL SIGNED BY TARAN J. PETERS
APPROVED BY	ORIGINAL SIGNED BY DAVID P. KRAHN
HOR. SCALE	1 : 500
VERTICAL	1 : 25
1. RELEASED FOR TENDER	MAY 27/09 TJP
NO. REVISIONS	DATE BY

DILLON CONSULTING

RELEASED FOR CONSTRUCTION ORIGINAL SIGNED BY KEN TURKO, 05/27/2009

ENGINEER'S SEAL

PROVINCE OF MANITOBA
REGISTERED PROFESSIONAL ENGINEER
T.J. PETERS
Member 22309
08/27/09

CONSULTANT PROJECT NO. 08-9587

THE CITY OF WINNIPEG
PUBLIC WORKS DEPARTMENT

2009 GRANULAR ROADWAY IMPROVEMENTS
McCREARY ROAD
GRADING AND PAVING
2+950 TO 3+300

CITY DRAWING NUMBER
SHEET 8 OF 11

DATE: MAY 27/09