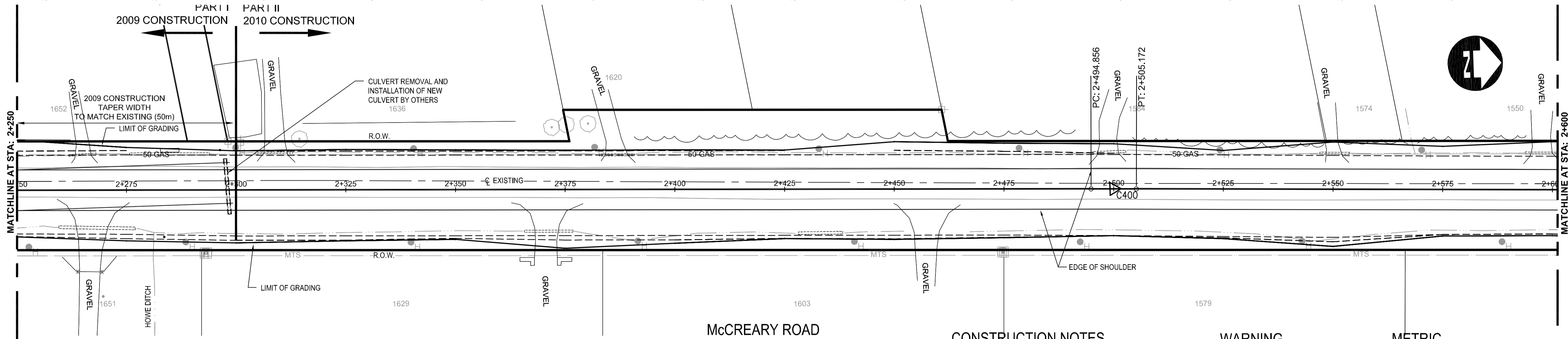
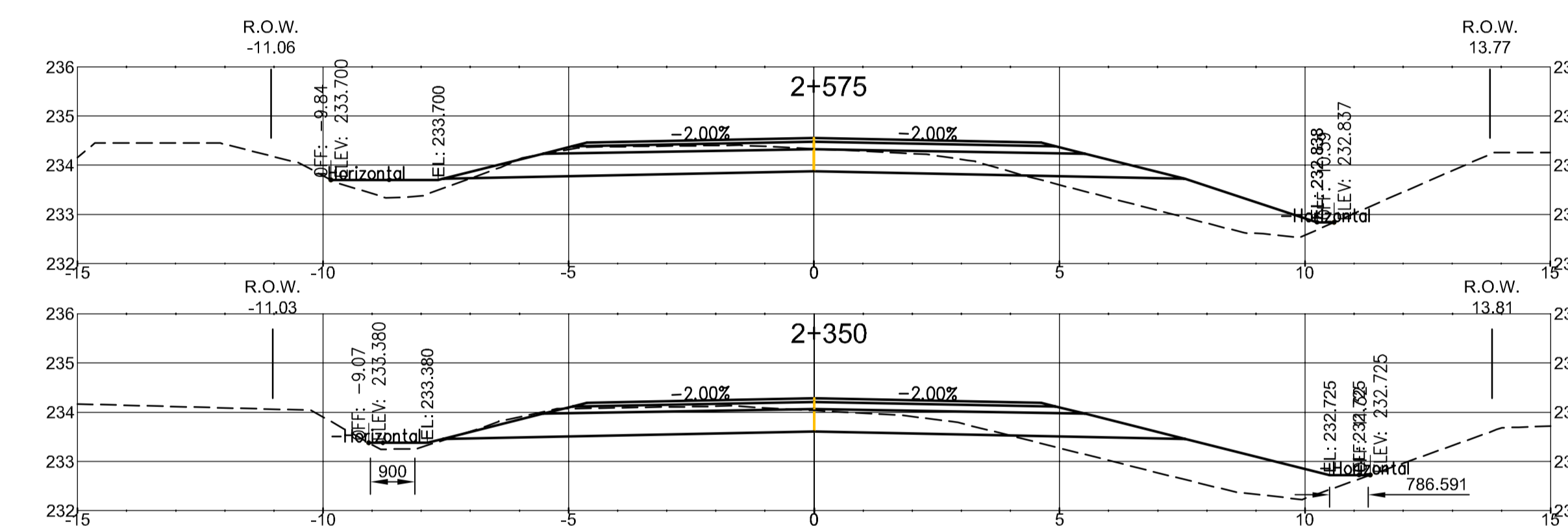
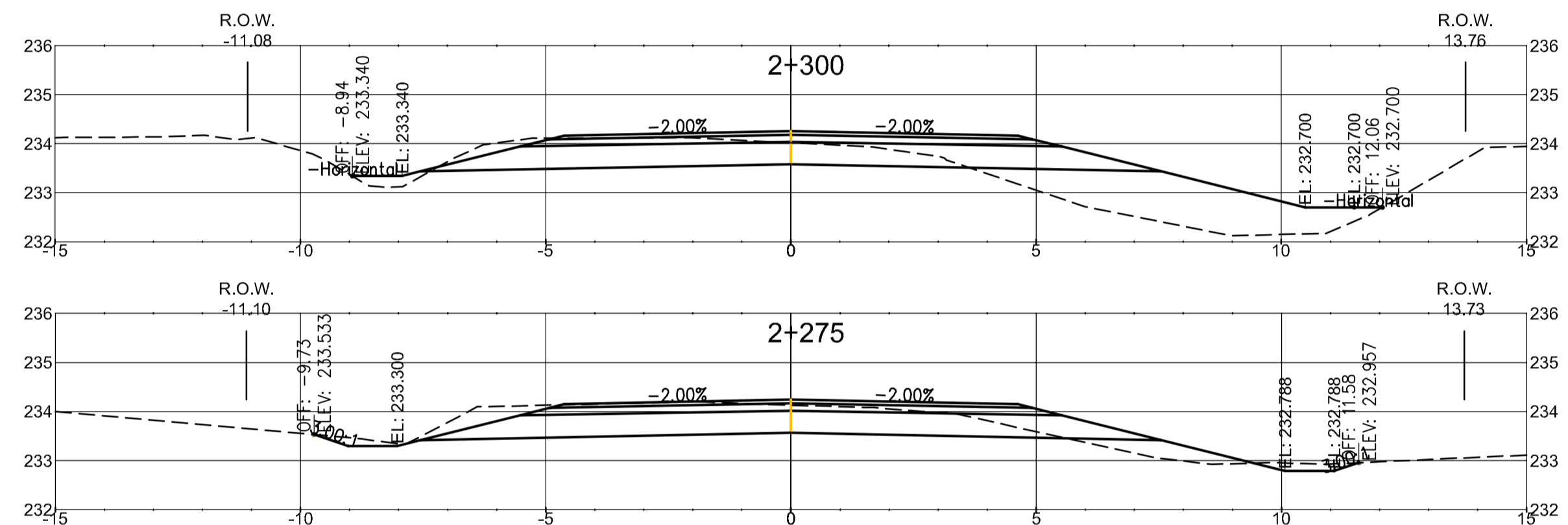


	2+250	2+275	2+300	2+325	2+350	2+375	2+400	2+425	2+450	2+475	2+500	2+525	2+550	2+575	2+600
EXISTING GRADE	234.069	234.129	234.018	234.038	234.035	234.119	234.169	234.140	234.100	234.091	234.166	234.287	234.355	234.334	234.334
FINISH GRADE	234.23	234.24	234.26	234.27	234.29	234.30	234.31	234.32	234.34	234.35	234.40	234.45	234.50	234.55	234.55
WEST DITCH	233.312	233.300	233.340	233.340	233.380	233.400	233.412	233.425	233.438	233.450	233.500	233.587	233.633	233.700	233.700
EAST DITCH	232.801	232.788	232.700	232.712	232.725	232.738	232.750	232.762	232.775	232.788	232.800	232.812	232.825	232.838	232.838



McCreeary Road

CONSTRUCTION NOTES

WARNING

METRIC

1. REGRADE EXISTING DITCHES AS DIRECTED BY CONTRACT ADMINISTRATOR.
2. RENEW EXISTING APPROACHES AS DIRECTED BY CONTRACT ADMINISTRATOR.
3. NEW CULVERTS TO BE INSTALLED ON ALL DRIVEWAYS AS DIRECTED BY CONTRACT ADMINISTRATOR.
4. CHAINAGE ALONG CENTRELINE OF NEW ROAD

- IF POWER EQUIPMENT OR EXPLOSIVES ARE TO BE USED FOR EXCAVATION ON THIS PROJECT THE CONTRACTOR MUST:
1. NOTIFY THE GAS COMPANY OF THE PROPOSED LOCATION OF EXCAVATION.
  2. TAKE PRECAUTION TO AVOID DAMAGE TO GAS COMPANY INSTALLATIONS. SEE PROVINCIAL REGULATION 210/72 FOR DETAILS.

WHOLE NUMBERS INDICATE MILLIMETRES  
DECIMALIZED NUMBERS INDICATE METRES.

150 mm W.M.	WATER MAIN	150 mm W.M.	HYDRO	150 mm W.M.	WATERMAIN	150 mm W.M.
○	HYDRANT	●	M.T.S.	+	HYDRANT	+
⊗	VALVE	⊗	CONCRETE	+	VALVE	+
300 mm L.D.S.	LAND DRAINAGE SEWER	300 mm L.D.S.	ASPHALT	300 mm L.D.S.	LAND DRAINAGE SEWER	300 mm L.D.S.
250 mm W.W.S.	WASTE WATER SEWER	250 mm W.W.S.	PLANING	250 mm W.W.S.	WASTE WATER SEWER	250 mm W.W.S.
○	MANHOLE	●	SIDEWALK	+	Q PROFILE	+
□	CATCH BASIN	■	PAVING STONES	+	NORTH/WEST GUTTER	+
▽	CURB INLET	▽	PARTIAL DEPTH REPAIR	+	SOUTH/EAST GUTTER	+
+	JUNCTIONS	+	PROPERTY LINE	+	NORTH/WEST T/LANE	+
+	CULVERT	+	SURVEY BAR	+	SOUTH/EAST T/LANE	+
+	GAS	+	PARAPLEGIC RAMP	+		+
---	EXISTING LEGEND-PLAN	---	PROPOSED	---	EXISTING LEGEND-PROFILE	---
---		---	PROPOSED	---		---

UNDERGROUND STRUCTURES

SUPPLY, U/G STRUCTURES COMMITTEE	DATE

NOTE:  
LOCATION OF UNDERGROUND STRUCTURES AS SHOWN ARE BASED ON THE BEST INFORMATION AVAILABLE, BUT NO GUARANTEE IS GIVEN THAT ALL EXISTING UTILITIES ARE SHOWN OR THAT THE GIVEN LOCATIONS ARE EXACT. CONFIRMATION OF EXISTENCE AND EXACT LOCATION OF ALL SERVICES MUST BE OBTAINED FROM THE INDIVIDUAL UTILITIES BEFORE PROCEEDING WITH CONSTRUCTION.

B.M. ELEV.	DESIGNED BY	DTM
	DRAWN BY	DTM
	CHECKED BY	ORIGINAL SIGNED BY TARAN J. PETERS
	APPROVED BY	ORIGINAL SIGNED BY DAVID P. KRAHN
	HOR. SCALE	1 : 500
	VERTICAL	1 : 25
1.	RELEASED FOR TENDER	MAY 27/09 TJP
NO.	REVISIONS	DATE BY

DILLON CONSULTING

RELEASED FOR CONSTRUCTION ORIGINAL SIGNED BY KEN TURKO, 05/27/2009

ENGINEER'S SEAL

PROVINCE OF MANITOBA

T. J. PETERS  
08/27/09  
Member  
22309

REGISTERED PROFESSIONAL ENGINEER

CONSULTANT PROJECT NO.  
08-9587

THE CITY OF WINNIPEG  
PUBLIC WORKS DEPARTMENT

2009 GRANULAR ROADWAY IMPROVEMENTS  
McCreeary Road  
GRADING AND PAVING  
2+250 TO 2+600

CITY DRAWING NUMBER  
SHEET 6 OF 11

Dillon Consulting Limited (MB)  
No. 1789 Date: MAY 27/09