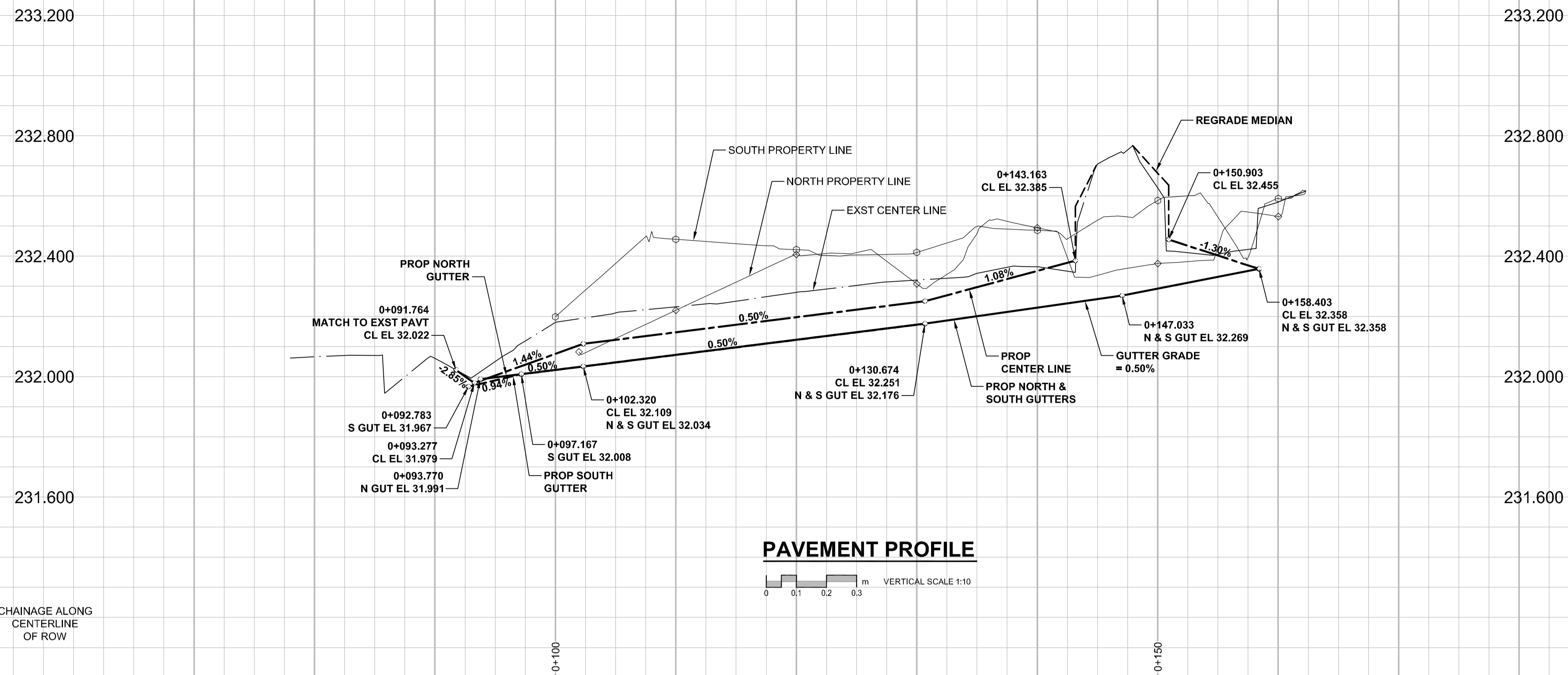


A1 SIZE 23.4" x 33.1" (594mm x 841mm)



**PAVEMENT PROFILE**

VERTICAL SCALE 1:10

DRAWING LIST			
No.	CITY DWG No.	REV.	DESCRIPTION
00	N/A	0	COVER SHEET
01	N/A	0	DRAWING LIST, SEIER BAY HORIZONTAL AND VERTICAL ALIGNMENT, HORIZONTAL AND VERTICAL CONTROL, GEOMETRIC LAYOUT
02	N/A	0	ABBREVIATIONS, PLAZA DRIVE KEY PLAN, HORIZONTAL AND VERTICAL CONTROL, GEOMETRIC LAYOUT
03	N/A	0	PLAZA DRIVE HORIZONTAL AND VERTICAL ALIGNMENT-190m WEST OF PEMBINA HIGHWAY TO STA 1+120
04	N/A	0	PLAZA DRIVE HORIZONTAL AND VERTICAL ALIGNMENT-STA 1+120 TO PEMBINA HIGHWAY

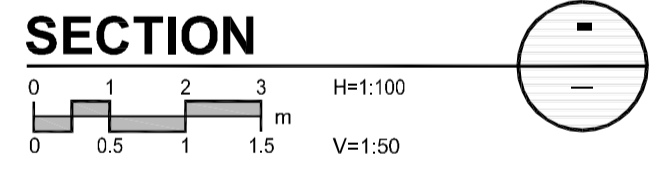
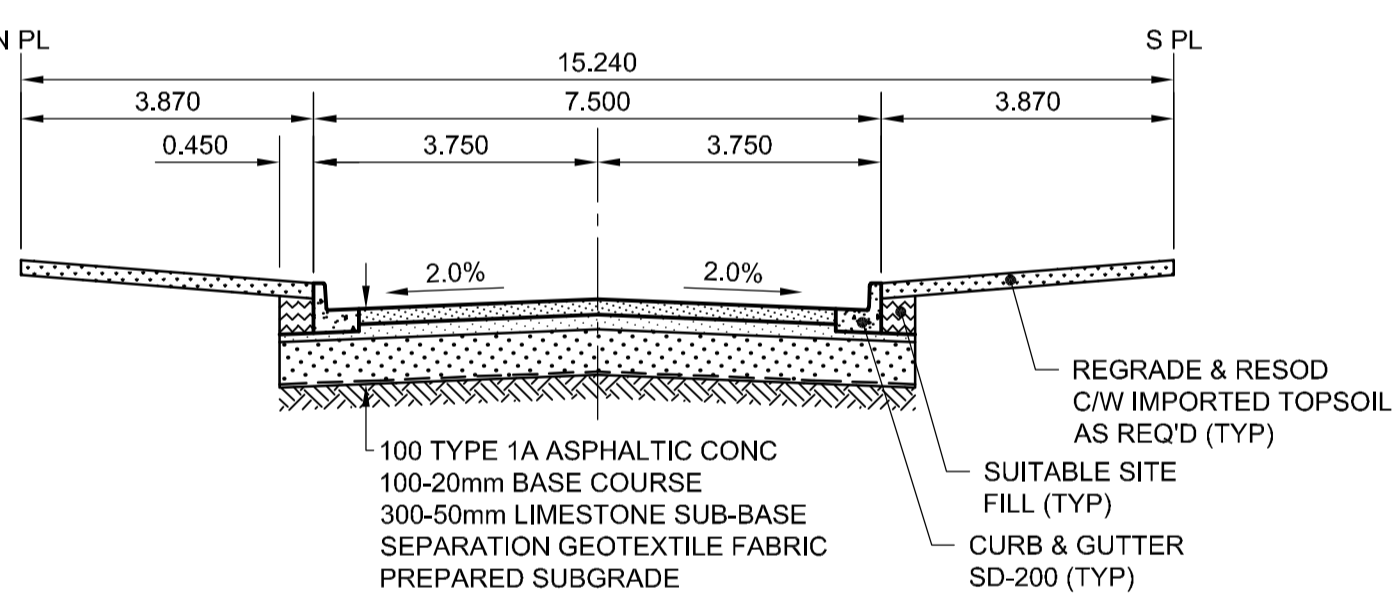
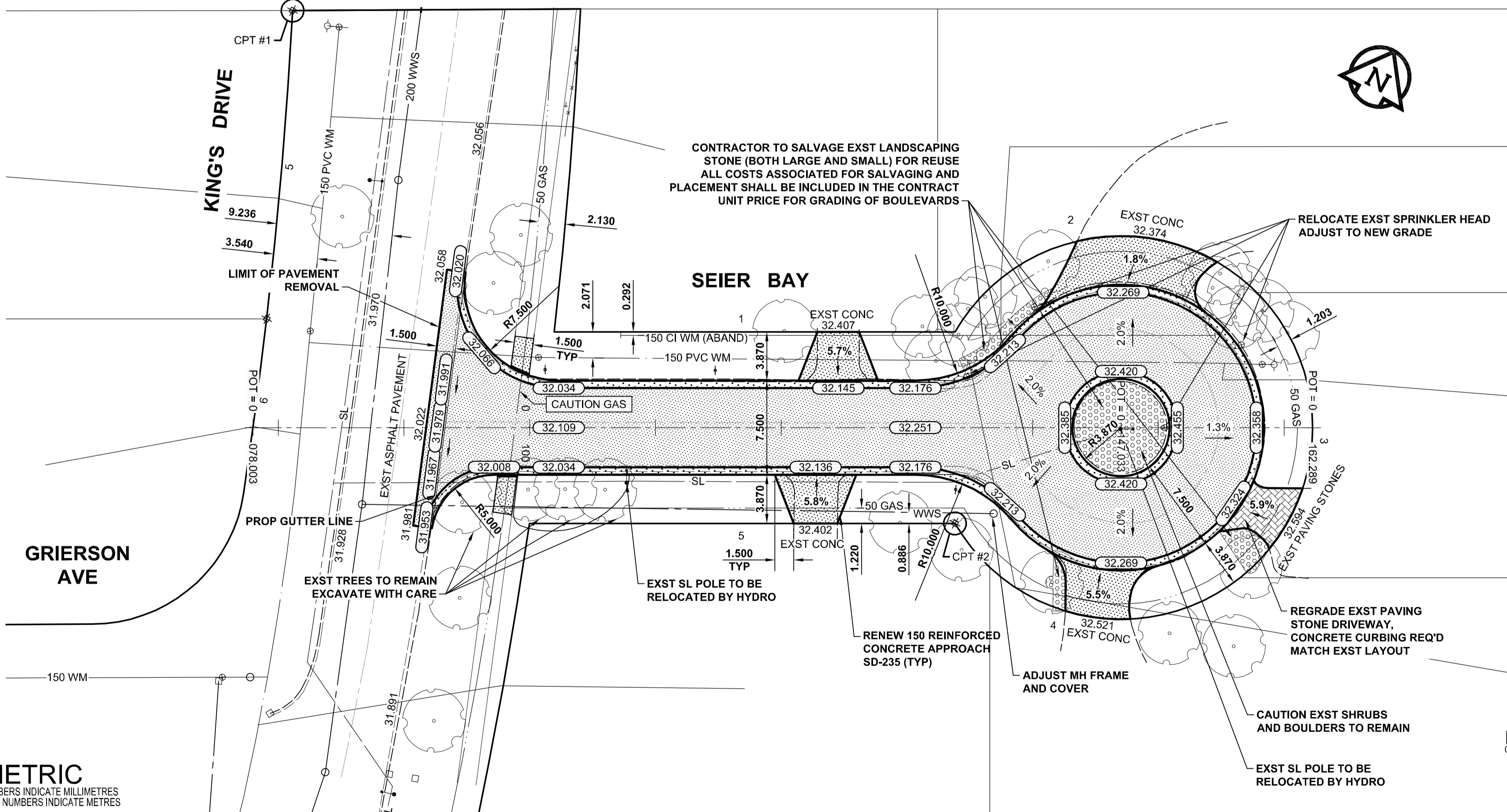
SEIER BAY CENTERLINE-GEOMETRIC CONTROL POINT COORDINATES			
POINT/STATION	NORTHING	EASTING	COMMENT
POT 0+078.003	9979.579	9947.481	START OF ALIGNMENT
POT 0+147.033	10013.066	10007.845	CTR 3.870 RADIUS
POT 0+162.289	10020.466	10021.185	END OF ALIGNMENT

SURVEY BAR-HORIZONTAL CONTROL POINTS-PROJECT COORDINATES					NAD83 DATUM		
CONTROL POINT	LOCATION	NORTHING	EASTING	ELEVATION	NORTHING	EASTING	ELEVATION
#1	IB @ PI of PL's @ NE CRN OF 5 KING'S DRIVE	10010.115	9934.134	231.918	5518614.858	634313.746	-
#2	IB @ PI of PL & ROW ARC @ NE CRN OF 5 SEIER BAY	10000.000	10000.000	232.161	5518604.782	634379.569	-

NOTE: THE PROJECT DRAWINGS HAVE A SCALE FACTOR OF 0.999279 APPLIED TO LBIS INFORMATION TO MATCH LOCAL SURVEYED PROJECT COORDINATES

GEODETIC BENCHMARK-VERTICAL CONTROL POINTS		
GBM	LOCATION	ELEVATION
77-008	NE CRN MACLEAN CRES & FREEDMAN CRES. TBLT IN S CONC FOUNDATION OF MARY SPEECHLY HALL. 3.0m E & 0.3m BELOW TOP OF CONC OF MOST SLY PROJECTION OF SW CRN OF BLDG	233.574m

PLOT: 09/03/11 1:37:49 PM



- NOTES**
- ADJUST MH AND CB RIMS TO NEW GRADES.
  - LAMP STANDARDS, HYDRO POLES, AND ANCHORS MAY REQUIRE TEMPORARY SUPPORT/REMOVAL OR REPLACEMENT AT THE CONTRACTOR'S EXPENSE.
  - CONTRACTOR SHALL TAKE PRECAUTIONARY STEPS TO PROTECT EXISTING BOULEVARD TREES WITHIN THE LIMITS OF CONSTRUCTION FROM DAMAGE FROM CONSTRUCTION ACTIVITIES AS OUTLINED IN THE SPECIFICATIONS.
  - THE LOCATION OF ALL SERVICES TO BE CONFIRMED IN THE FIELD BY THE CONTRACTOR.
  - ADD 200.000m TO ABBREVIATED ELEVATIONS TO OBTAIN GEODETIC ELEVATIONS.



**METRIC**  
WHOLE NUMBERS INDICATE MILLIMETRES  
DECIMALIZED NUMBERS INDICATE METRES

EXISTING	LEGEND - PLAN	NEW	EXISTING	LEGEND - PLAN	NEW	EXISTING	LEGEND - PLAN	NEW
[Symbol]	NATURAL GAS	[Symbol]	MANHOLE	[Symbol]	CONCRETE PAVEMENT	[Symbol]	LOCATION APPROVED	[Symbol]
[Symbol]	COMMUNICATION	[Symbol]	CATCH BASIN / CATCH PIT	[Symbol]	ASPHALT PAVEMENT	[Symbol]	UNDERGROUND STRUCTURES	[Symbol]
[Symbol]	HYDRO	[Symbol]	C & G INLET WITH BOX	[Symbol]	CONC. SIDEWALK/MEDIAN	[Symbol]	DATE	[Symbol]
[Symbol]	CATV	[Symbol]	TREE	[Symbol]	PAVING STONE	[Symbol]	DATE	[Symbol]
[Symbol]	TRAFFIC SIGNALS	[Symbol]	TEST HOLE	[Symbol]	GRAVEL	[Symbol]	DATE	[Symbol]
[Symbol]	LAND DRAINAGE SEWER	[Symbol]	PROPERTY LINE	[Symbol]	CURB RAMP	[Symbol]	DATE	[Symbol]
[Symbol]	SANITARY/COMBINED SEWER	[Symbol]	SURVEY BAR	[Symbol]	PAVT PLANING/REMOVAL	[Symbol]	DATE	[Symbol]
[Symbol]	SSP/DCP	[Symbol]	FENCE	[Symbol]		[Symbol]	DATE	[Symbol]
[Symbol]	WATERMAIN	[Symbol]	BOC/EOPAVT	[Symbol]		[Symbol]	DATE	[Symbol]
[Symbol]	SUBDRAIN	[Symbol]	ELEVATION	[Symbol]		[Symbol]	DATE	[Symbol]
[Symbol]	DITCH	[Symbol]		[Symbol]		[Symbol]	DATE	[Symbol]

NO.	ISSUED FOR CONSTRUCTION	DATE	BY
0	ISSUED FOR CONSTRUCTION	09/03/13	KLC
	REVISIONS	YYMMDD	BY

AECOM			
DESIGNED BY	RPB	CHECKED BY	GFN
DRAWN BY	KLC	APPROVED BY	RPB
HOR. SCALE	1:250	RELEASED FOR CONSTRUCTION	
VERT. SCALE	AS SHOWN		
DATE	09/03/13	DATE	

PROFESSIONAL'S SEAL  
PROVINCE OF MANITOBA  
REGISTERED PROFESSIONAL ENGINEER  
**R. P. BRUCE**  
CONSULTANT DRAWING NO. 0265-408-00\_01-CT1001\_RX

**THE CITY OF WINNIPEG**  
PUBLIC WORKS DEPARTMENT  
ENGINEERING DIVISION

**SEIER BAY STREET RECONSTRUCTION**  
DRAWING LIST, HORIZONTAL AND VERTICAL ALIGNMENT, HORIZONTAL AND VERTICAL CONTROL, GEOMETRIC LAYOUT  
FROM KING'S DRIVE TO STA 0+162.289

CITY DRAWING NUMBER	N/A
SHEET	1 OF 4
DRAWING No.	01
REV	0

UMA FILE NAME: 0265-408-00\_01-CT1001\_RX.dwg Saved By: cooperkl

BID OPPORTUNITY NO. 041-2009