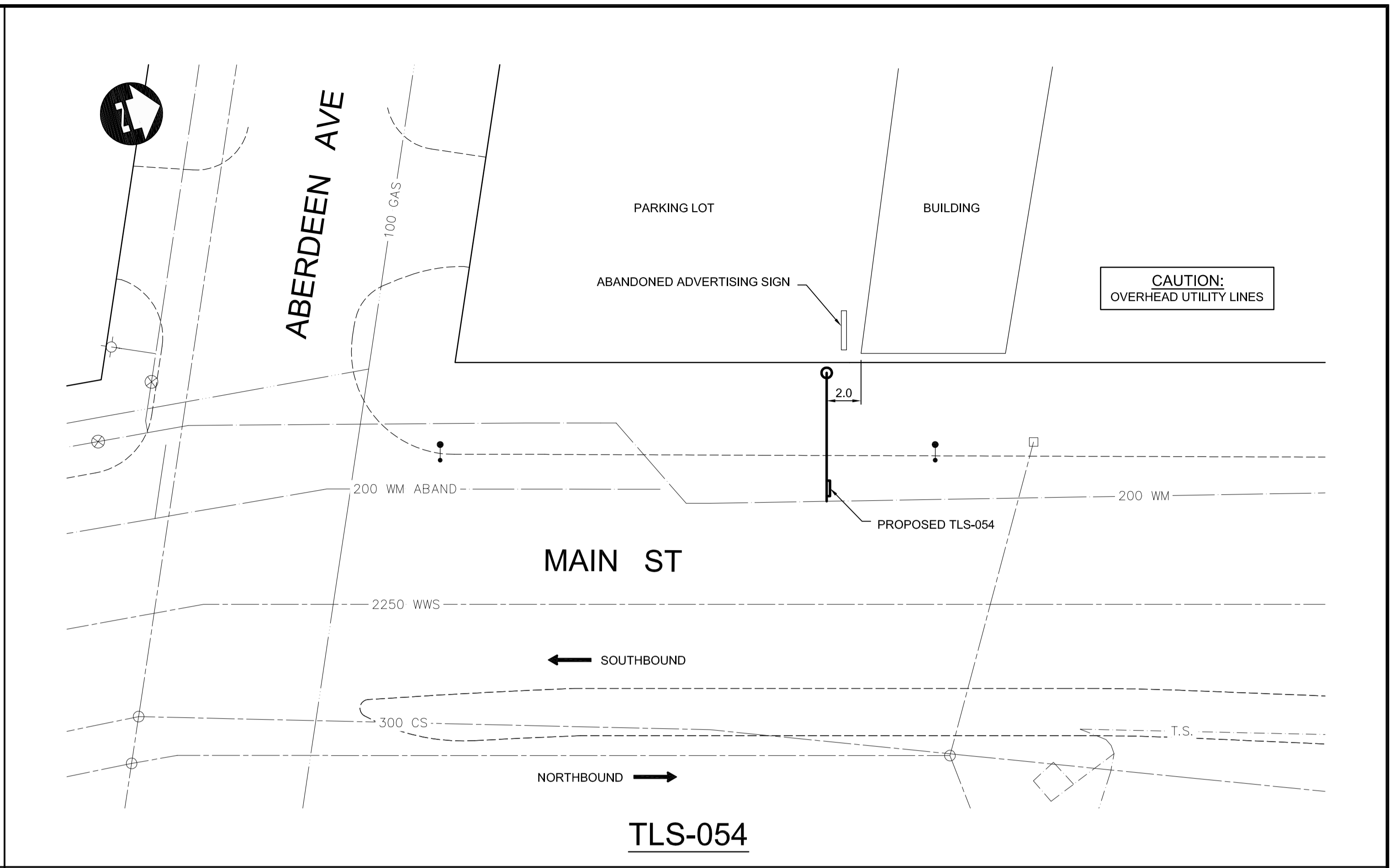
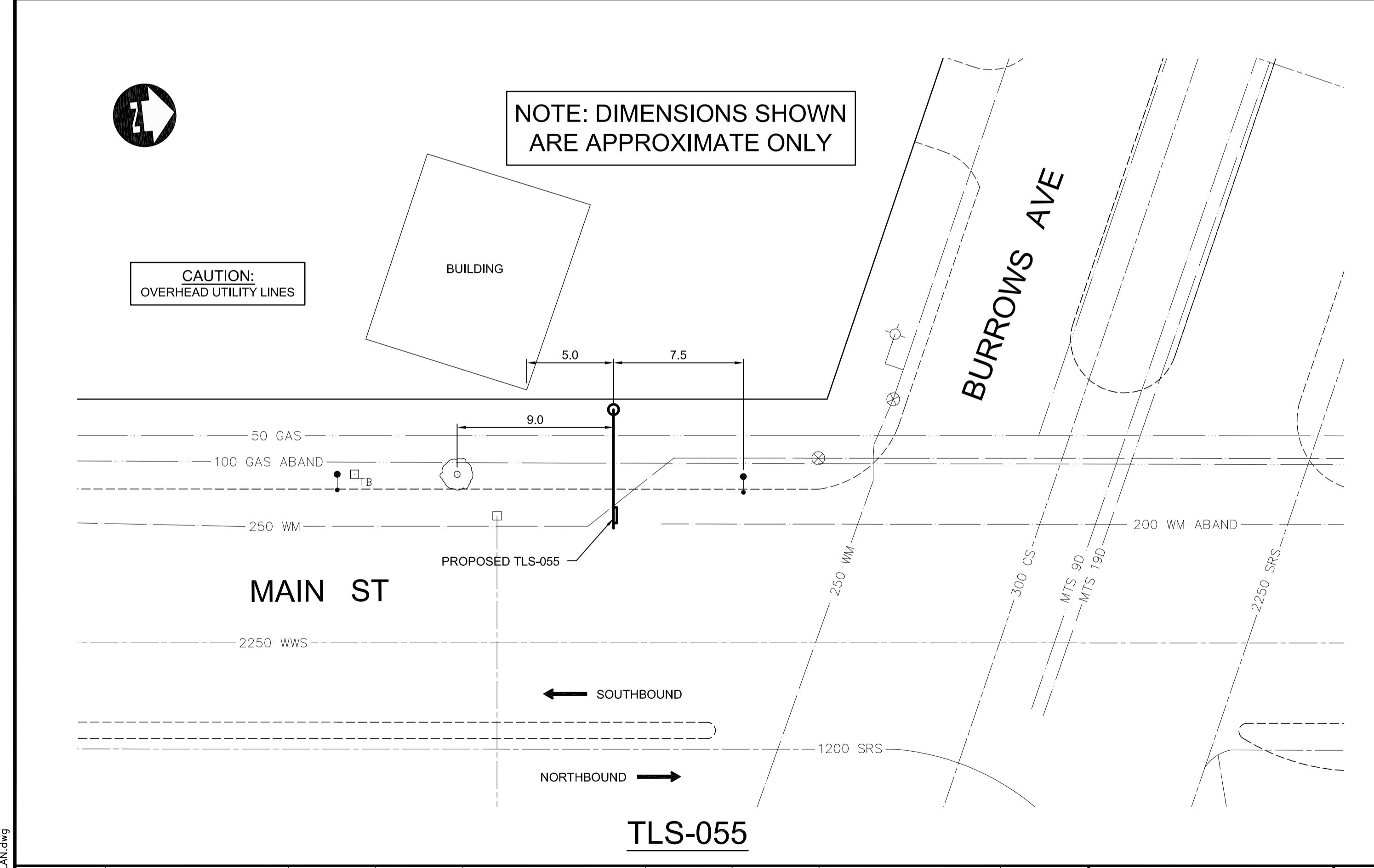


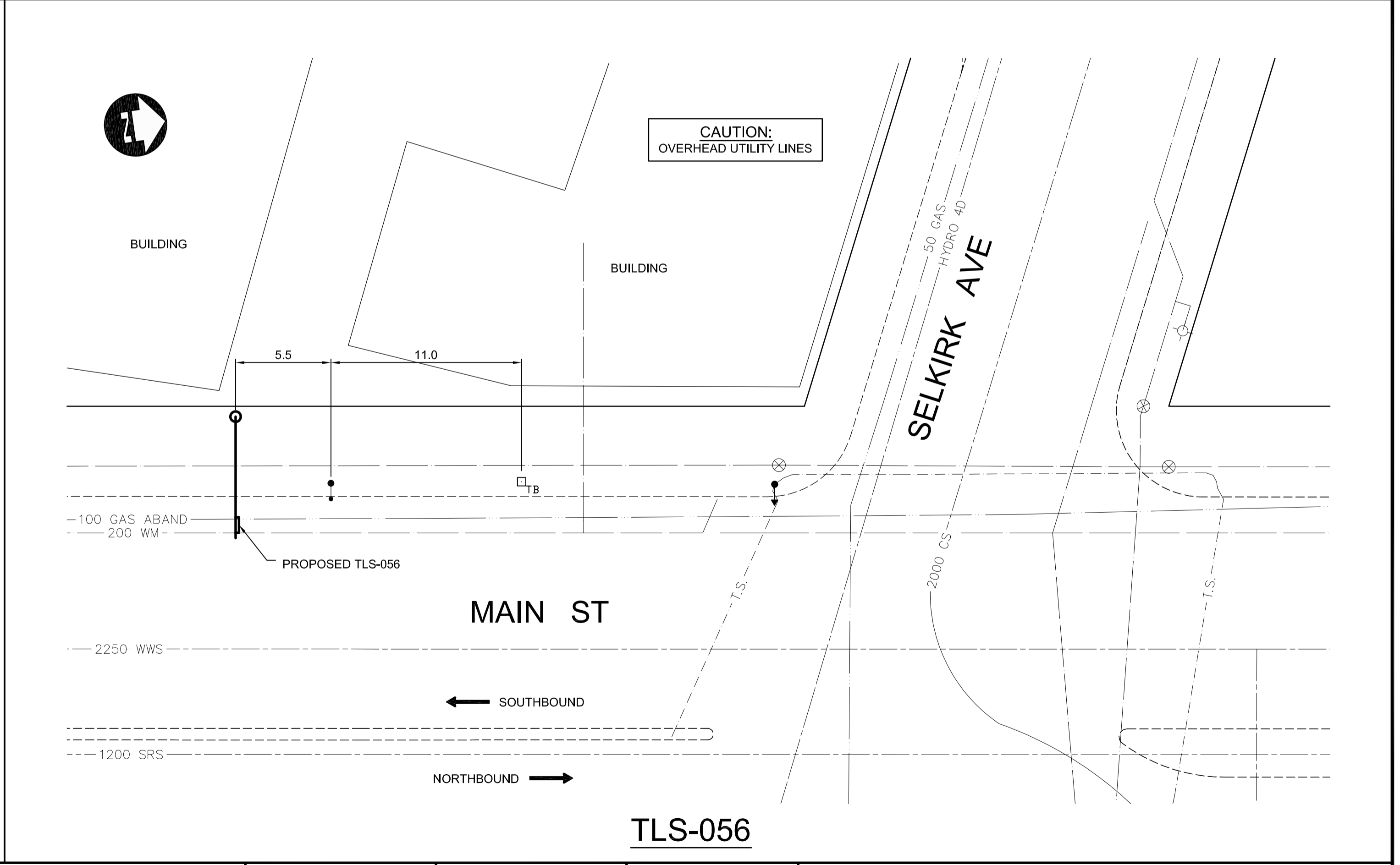
TLS-053



TLS-054



TLS-055



TLS-056

150 WM	WATERMAIN	150 WM	HYDRO	HYDRO	150 mm W.M.	WATERMAIN	150 mm W.M.	
⊕	HYDRANT	⊕	MTS	MTS	+	HYDRANT	+	
⊗	VALVE	⊗			+	VALVE	+	
300 LDS	LAND DRAINAGE SEWER	300 LDS			300 mm L.D.S.	LAND DRAINAGE SEWER	300 mm L.D.S.	
250 WWS	WASTE WATER SEWER	250 WWS			250 mm W.W.S.	WASTE WATER SEWER	250 mm W.W.S.	
○	MANHOLE	●			○	PROFILE	○	
□	CATCH BASIN	■			▣	NORTH/WEST GUTTER	▣	
▽	CURB INLET	▽			▤	SOUTH/EAST GUTTER	▤	
⊕	JUNCTIONS	⊕			▥	NORTH/WEST T/LANE	▥	
⊕	CULVERT	⊕			▦	SOUTH/EAST T/LANE	▦	
100 GAS	GAS	100 GAS			▧	PARAPLEGIC RAMP	▧	
EXISTING	LEGEND-PLAN	PROPOSED	EXISTING	LEGEND-PLAN	PROPOSED	EXISTING	LEGEND-PROFILE	PROPOSED

<b>UNDERGROUND STRUCTURES</b> SUPPLY, U/G STRUCTURES COMMITTEE DATE		B.M. ELEV.		DESIGNED BY RJT DRAWN BY TJH CHECKED BY DBW APPROVED BY				ENGINEER'S SEAL PROVINCE OF MANITOBA REGISTERED PROFESSIONAL ENGINEER D.B. WIEBE 06/19/09 Member 22480			
NOTE: LOCATION OF UNDERGROUND STRUCTURES AS SHOWN ARE BASED ON THE BEST INFORMATION AVAILABLE, BUT NO GUARANTEE IS GIVEN THAT ALL EXISTING UTILITIES ARE SHOWN OR THAT THE GIVEN LOCATIONS ARE EXACT. CONFIRMATION OF EXISTENCE AND EXACT LOCATION OF ALL SERVICES MUST BE OBTAINED FROM THE INDIVIDUAL UTILITIES BEFORE PROCEEDING WITH CONSTRUCTION.		2 ISSUED FOR TENDER 06/19/09 TJH 1 ISSUED FOR REVIEW 06/04/09 TJH		HOR. SCALE 1:200 VERTICAL		RELEASED FOR CONSTRUCTION DATE		CONSULTANT PROJECT NUMBER 09-1545		ON STREET TRANSIT PRIORITY IMPROVEMENTS - PHASE 3 MAIN STREET (2 OF 5)	
								CITY DRAWING NUMBER TLS-09-10		SHEET 10 OF 23	
										CONSULTANT DRAWING NUMBER	

G:\CAD\09-1545\Contract\CHSS\CHSS-PLAN.dwg