

2009 PROGRAM PROPOSED WORKS

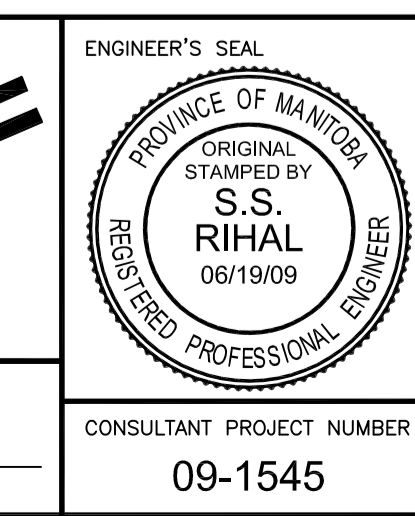
STRUCTURE NO.	LOCATION	MK	POST DATA			ARM DATA			BREAKAWAY BASE REQUIREMENT	OVERHEAD UTILITY LINES	POWDER COAT REQUIREMENT	ADJACENT PROPERTY		COMMENTS
			HT	BOT	TOP	ARM LENGTH "L"	FLANGE	END				ZONE 1	ZONE 2	
PORTAGE AVENUE														
TLS-029	PORTAGE AVE. W/B, W. OF COLONY ST.		6000	240 A/F	200 A/F	3300	200 A/F	130 A/F	YES	--	YES	N/A	BRICK	
TLS-030	PORTAGE AVE. W/B, W. OF SPENCE ST.		6000	240 A/F	200 A/F	7300	200 A/F	130 A/F	--	YES	--	BRICK	BRICK	BLDG. AT BOS/W
TLS-031	PORTAGE AVE. W/B, W. OF FURBY ST.		6000	240 A/F	200 A/F	7200	200 A/F	130 A/F	--	YES	--	CONCRETE	CONCRETE	BLDG. AT BOS/W
TLS-032	PORTAGE AVE. W/B, W. OF MARYLAND ST.		6000	240 A/F	200 A/F	7200	200 A/F	130 A/F	--	--	--	CONCRETE, DIRT	CONCRETE	
TLS-033	PORTAGE AVE. W/B, W. OF BEVERLEY ST.		6000	240 A/F	200 A/F	7200	200 A/F	130 A/F	--	--	--	CONCRETE	CONCRETE	
TLS-034	PORTAGE AVE. W/B, W. OF ARLINGTON ST.		6000	240 A/F	200 A/F	7100	200 A/F	130 A/F	--	--	--	CONCRETE	CONCRETE	BLDG. AT BOS/W
TLS-035	PORTAGE AVE. W/B, W. OF BANNING ST.		6000	240 A/F	200 A/F	7200	200 A/F	130 A/F	--	--	--	CONCRETE	CONCRETE	
TLS-036	PORTAGE AVE. W/B, W. OF SHERBURN ST.		6000	240 A/F	200 A/F	7100	200 A/F	130 A/F	--	--	--	CONCRETE	CONCRETE	
TLS-037	PORTAGE AVE. W/B, W. OF MINTO ST.		6000	240 A/F	200 A/F	7400	200 A/F	130 A/F	--	--	--	CONCRETE, ASPHALT	CONCRETE	
TLS-038	PORTAGE AVE. W/B, W. OF ERIN ST.		6000	240 A/F	200 A/F	7300	200 A/F	130 A/F	--	--	--	CONCRETE	CONCRETE	
TLS-039	PORTAGE AVE. W/B, W. OF VALOUR RD.		6000	240 A/F	200 A/F	7300	200 A/F	130 A/F	--	--	--	CONCRETE	CONCRETE	
TLS-040	PORTAGE AVE. E/B, W. OF RAGLAN RD.		6000	240 A/F	200 A/F	7300	200 A/F	130 A/F	--	--	--	GRASS	CONCRETE	
TLS-041	PORTAGE AVE. E/B, E. OF STILES ST.		6000	240 A/F	200 A/F	7400	200 A/F	130 A/F	--	--	--	CONCRETE	CONCRETE	
TLS-042	PORTAGE AVE. E/B, E. OF CAMDEN PL.		6000	240 A/F	200 A/F	7500	200 A/F	130 A/F	--	--	--	CONCRETE	CONCRETE	
TLS-043	PORTAGE AVE. E/B, E. OF SPRAGUE ST.		6000	240 A/F	200 A/F	7500	200 A/F	130 A/F	--	--	--	CONCRETE	CONCRETE	
TLS-044	PORTAGE AVE. E/B, E. OF SHERBURN ST.		6000	240 A/F	200 A/F	7200	200 A/F	130 A/F	--	--	--	CONCRETE	CONCRETE	
TLS-045	PORTAGE AVE. E/B, E. OF RUBY ST.		6000	240 A/F	200 A/F	7300	200 A/F	130 A/F	--	--	--	CONCRETE, GRASS	CONCRETE	
TLS-046	PORTAGE AVE. E/B, E. OF HOME ST.		6000	240 A/F	200 A/F	7500	200 A/F	130 A/F	--	--	--	CONCRETE, DIRT	CONCRETE	
TLS-047	PORTAGE AVE. E/B, E. OF CHESTNUT ST.		6000	240 A/F	200 A/F	7100	200 A/F	130 A/F	--	--	--	CONCRETE, ASPHALT	CONCRETE	
TLS-048	PORTAGE AVE. E/B, E. OF SHERBROOK ST.		6000	240 A/F	200 A/F	7100	200 A/F	130 A/F	--	YES	--	CONCRETE	CONCRETE	BLDG. AT BOS/W
MAIN STREET														
TLS-049	MAIN ST. S/B, S. OF SMITHFIELD AVE.		6000	240 A/F	200 A/F	7100	200 A/F	130 A/F	--	--	--	CONCRETE, DIRT	GRASS, CONCRETE	
TLS-050	MAIN ST. S/B, S. OF INKSTER BLVD.		6000	240 A/F	200 A/F	7200	200 A/F	130 A/F	--	--	--	CONCRETE, DIRT	CONCRETE	
TLS-051	MAIN ST. S/B, S. OF CATHEDRAL AVE.		6000	240 A/F	200 A/F	7200	200 A/F	130 A/F	--	--	--	CONCRETE	CONCRETE	BLDG. AT BOS/W
TLS-052	MAIN ST. S/B, S. OF ANDERSON AVE.		6000	240 A/F	200 A/F	7300	200 A/F	130 A/F	--	--	--	ASPHALT	CONCRETE	
TLS-053	MAIN ST. S/B, S. OF MOUNTAIN AVE.		6000	240 A/F	200 A/F	7500	200 A/F	130 A/F	--	--	--	ASPHALT	CONCRETE	
TLS-054	MAIN ST. S/B, S. OF REDWOOD AVE.		6000	240 A/F	200 A/F	7200	200 A/F	130 A/F	--	YES	--	BRICK, ASPHALT	BRICK	
TLS-055	MAIN ST. S/B, S. OF BURROWS AVE.		6000	240 A/F	200 A/F	7100	200 A/F	130 A/F	--	YES	--	GRASS	CONCRETE	
TLS-056	MAIN ST. S/B, S. OF SELKIRK AVE.		6000	240 A/F	200 A/F	7500	200 A/F	130 A/F	--	YES	--	CONCRETE	CONCRETE	
TLS-057	MAIN ST. S/B, S. OF STELLA AVE.		6000	240 A/F	200 A/F	7300	200 A/F	130 A/F	--	YES	--	CONCRETE	CONCRETE	BLDG. AT BOS/W
TLS-058	MAIN ST. N/B, N. OF SUTHERLAND AVE.		6000	240 A/F	200 A/F	7300	200 A/F	130 A/F	--	YES	--	ASPHALT	CONCRETE	
TLS-059	MAIN ST. N/B, N. OF EUCLID AVE.		6000	240 A/F	200 A/F	7400	200 A/F	130 A/F	--	YES	--	CONCRETE	CONCRETE	BLDG. AT BOS/W
TLS-060	MAIN ST. N/B, N. OF SELKIRK AVE.		6000	240 A/F	200 A/F	7400	200 A/F	130 A/F	--	YES	--	CONCRETE	CONCRETE	BLDG. AT BOS/W
TLS-061	MAIN ST. N/B, N. OF BURROWS AVE.		6000	240 A/F	200 A/F	7400	200 A/F	130 A/F	--	YES	--	CONCRETE	CONCRETE	
TLS-062	MAIN ST. N/B, N. OF REDWOOD AVE.		6000	240 A/F	200 A/F	7500	200 A/F	130 A/F	--	--	--	ASPHALT	CONCRETE	
TLS-063	MAIN ST. N/B, N. OF MOUNTAIN AVE.		6000	240 A/F	200 A/F	7500	200 A/F	130 A/F	--	--	--	GRASS	GRASS, CONCRETE	
TLS-064	MAIN ST. N/B, N. OF CHURCH AVE.		6000	240 A/F	200 A/F	8200	200 A/F	130 A/F	--	--	--	GRASS	GRASS, CONCRETE	
TLS-065	MAIN ST. N/B, N. OF CATHEDRAL AVE.		6000	240 A/F	200 A/F	7400	200 A/F	130 A/F	--	--	--	GRASS	CONCRETE	
TLS-077	MAIN ST. S/B, S. OF ALEXANDER AVE.		6000	240 A/F	200 A/F	3200	200 A/F	130 A/F	YES	--	YES	N/A	CONCRETE	TRANSIT DEPT.

G:\CAD\09-1545\Contract\CHSS\CHSS-PLAN.dwg

150 WM	WATERMAIN	150 WM	HYDRO	HYDRO	HYDRO	150 mm W.M.	WATERMAIN	150 mm W.M.
⊕	HYDRANT	⊕	MTS	MTS	MTS	+	HYDRANT	+
⊗	VALVE	⊗	CONCRETE	CONCRETE	CONCRETE	X	VALVE	X
300 LDS	LAND DRAINAGE SEWER	300 LDS	ASPHALT	ASPHALT	300 mm L.D.S.	LAND DRAINAGE SEWER	300 mm L.D.S.	
250 WWS	WASTE WATER SEWER	250 WWS	PLANING	PLANING	250 mm W.W.S.	WASTE WATER SEWER	250 mm W.W.S.	
○	MANHOLE	●	SIDEWALK	SIDEWALK	⊖	PROFILE	⊖	
□	CATCH BASIN	■	PAVING STONES	PAVING STONES	⊖	NORTH/WEST GUTTER	⊖	
▽	CURB INLET	▽	PARTIAL DEPTH REPAIR	PARTIAL DEPTH REPAIR	⊖	SOUTH/EAST GUTTER	⊖	
+	JUNCTIONS	+	PROPERTY LINE	PROPERTY LINE	⊖	NORTH/WEST T/LANE	⊖	
⊖	CULVERT	⊖	SURVEY BAR	SURVEY BAR	⊖	SOUTH/EAST T/LANE	⊖	
100 GAS	GAS	100 GAS	PARAPLEGIC RAMP	PARAPLEGIC RAMP	⊖			
EXISTING	LEGEND-PLAN	PROPOSED	EXISTING	LEGEND-PLAN	PROPOSED	EXISTING	LEGEND-PROFILE	PROPOSED

UNDERGROUND STRUCTURES		B.M. ELEV.	DESIGNED BY	SSR
DATE			DRAWN BY	TJH
DATE			CHECKED BY	NBU
DATE			APPROVED BY	
DATE			HOR. SCALE	1:200
DATE			VERTICAL	
2	ISSUED FOR TENDER	06/19/09	TJH	
1	ISSUED FOR REVIEW	06/04/09	TJH	
NO.	REVISIONS	DATE	BY	DATE

NOTE:	
LOCATION OF UNDERGROUND STRUCTURES AS SHOWN ARE BASED ON THE BEST INFORMATION AVAILABLE, BUT NO GUARANTEE IS GIVEN THAT ALL EXISTING UTILITIES ARE SHOWN OR THAT THE GIVEN LOCATIONS ARE EXACT. CONFIRMATION OF EXISTENCE AND EXACT LOCATION OF ALL SERVICES MUST BE OBTAINED FROM THE INDIVIDUAL UTILITIES BEFORE PROCEEDING WITH CONSTRUCTION.	



ON STREET TRANSIT PRIORITY IMPROVEMENTS - PHASE 3		CITY DRAWING NUMBER: TLS-09-02 SHEET OF 23	
CONSULTANT PROJECT NUMBER: 09-1545		CONSULTANT DRAWING NUMBER: 02 OF 23	
2009 PROGRAM PROPOSED WORKS (1 OF 2)			