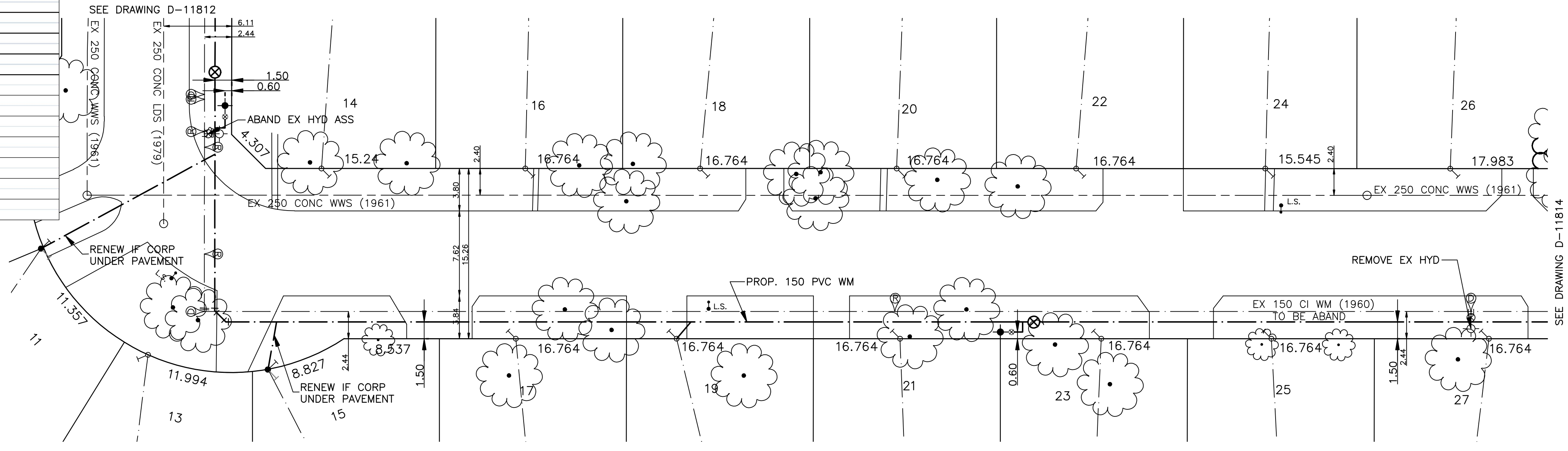
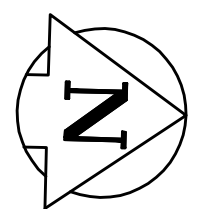


HOUSE WATER SERVICE INFORMATION					
ADDRESS & NATURE OF SERVICE	SIZE (mm) & TYPE	SHORT & LONG MEASUREMENT	CORP LOCATION	REMARKS	
11 Pembroke Road Residential	19 Copper	3.7 LR CR OF HSE	DR/WY A2402 SEWER/04		
13 Pembroke Road Residential	19 Copper	5.5 LR CR OF HSE	DR/WY A1819 SEWER/02		
14 Pembroke Road Residential	19 Copper	4.6 RL CR OF HSE	SEWER/01 GRD STRAP		
15 Pembroke Road Residential	19 Copper	0.6 LR CR OF HSE	DR/WY A2316 SEWER/03 E1784		
16 Pembroke Road Residential	19 Copper	5.8 LR CR OF HSE	SEWER/02		
17 Pembroke Road Residential	19 Copper	5 LR CR OF HSE	DR/WY A2249 SEWER/04		
18 Pembroke Road Residential	19 Copper	6.1 RL CR OF HSE	SEWER/02		
19 Pembroke Road Residential	19 Copper	1.5 LR CR OF HSE	DR/WY A2316 SEWER/03		
20 Pembroke Road Residential	19 Copper	4.3 LR CR OF HSE	SEWER/02		
21 Pembroke Road Residential	19 Copper	6.2 RL CR OF HSE	DR/WY A2249 SEWER/04 SWIMMING POOL-P		
22 Pembroke Road Residential	19 Copper	6.7 LR CR OF HSE	SEWER/02 POOL-1987 PERMIT		
23 Pembroke Road Residential	19 Copper	3.5 RL CR OF HSE	DR/WY A2316 SEWER/03		
24 Pembroke Road Residential	19 Copper	5.3 LR CR OF HSE	SEWER/02		
25 Pembroke Road Residential	19 Copper	5.8 LR CR OF HSE	DR/WY A2325 SEWER/03		
26 Pembroke Road Residential	19 Copper	6.7 RL CR OF HSE	SEWER/02		
27 Pembroke Road Residential	19 Copper	2.6 RL CR OF HSE	DR/WY A2091 SEWER/02		

- NOTES:**
- ALL GATE VALVES ARE COUNTER-CLOCKWISE TO OPEN WITH A BLACK OPERATING NUT.
 - WATERMAIN TO BE INSTALLED BY TRENCHLESS METHODS.
 - BACKFILL IS CLASS 5 WITHIN BOULEVARD AND CLASS 3 WHEN WITHIN PAVEMENT/SIDEWALK OR WHEN WITHIN 1.0m OF PAVEMENT OR SIDEWALK.
 - WATER SERVICES ARE 19mm UNLESS OTHERWISE NOTED.
 - MINIMUM COVER TO TOP OF WATERMAIN SHALL BE 2.4m.
 - LOCATION OF ALL SERVICES TO BE CONFIRMED IN FIELD.
 - EXPOSE EXISTING WATERMAIN TO CONFIRM DEPTH PRIOR TO CONSTRUCTION.
 - ALL LEAD SERVICES TO BE RENEWED TO PROPERTY LINE.
 - SERVICES TO BE RENEWED SHALL BE REPLACED FROM WATERMAIN TO PROPERTY LINE. ALL OTHERS TO BE RECONNECTED.



CHAINAGE ALONG EAST PROPERTY LINE OF PEMBROKE ROAD (EAST LEG)
PEMBROKE ROAD



APEGM
Certificate of Authorization
GENIVAR Consultants
No. 4318 Expiry: April 30, 2010

METRIC
WHOLE NUMBERS INDICATE MILLIMETRES
DECIMAL NUMBERS INDICATE METRES

EXISTING	LEGEND - PLAN	PROPOSED	EXISTING	LEGEND - PLAN	PROPOSED	EXISTING	LEGEND - PROFILE	PROPOSED
—	WATERMAIN	—	—	REDUCER	—	—	150mm W.M.	—
—	HYDRANT VALVE	—	—	PLUG	—	—	300mm L.D.S.	—
—	LAND DRAINAGE SEWER	—	—	TRAFFIC SIGNAL	—	—	250mm W.W.S.	—
—	WASTE WATER SEWER	—	—	GAS	—	—	300mm L.D.S.	—
—	MANHOLE	—	—	HYDRO	—	—	250mm W.W.S.	—
—	CATCH BASIN	—	—	M.T.S.	—	—	—	—
—	CURB INLET	—	—	SURVEY BAR	—	—	—	—
—	TEE	—	—	CURB STOP	—	—	—	—
—	BEND	—	—	C.B. LEAD	—	—	—	—
—	ANODE	—	—	TREE	—	—	—	—
—	—	—	—	LAMP STANDARD	—	—	—	—

LOCATION APPROVED

SUPPLY U/G STRUCTURES COMMITTEE

NOTE:
LOCATION OF UNDERGROUND STRUCTURES AS SHOWN ARE BASED ON THE BEST INFORMATION AVAILABLE BUT NO GUARANTEE IS GIVEN THAT ALL EXISTING UTILITIES ARE SHOWN OR THAT THE GIVEN LOCATIONS ARE EXACT. CONFIRMATION OF EXISTENCE AND EXACT LOCATION OF ALL SERVICES MUST BE OBTAINED FROM THE INDIVIDUAL UTILITIES BEFORE PROCEEDING WITH CONSTRUCTION.

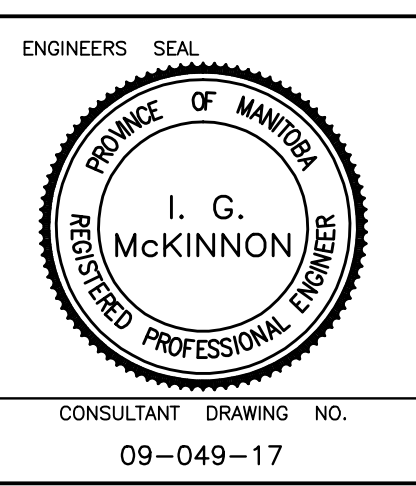
B.N. ELEV.	55-033	232.899
NO.	1	BID OPPORTUNITY 399-2009
REVISIONS		
DATE	MAY 12	DJ
DATE	MAY 09	

GENIVAR
200 TACHE AVENUE, WINNIPEG, MANITOBA R2H 1A7
PH: (204)-235-2115 FAX: (204)-235-2080

DESIGNED BY: DJ
CHECKED BY: AB
DRAWN BY: AB
APPROVED BY: SM

HOR. SCALE: 1:250
VERT. SCALE: 1:50

RELEASED FOR ORIGINAL CONSTRUCTION
SIGNED BY: K. ZUREK P. ENG
DATE: MAY 25, 2009



THE CITY OF WINNIPEG
WATER AND WASTE DEPARTMENT

2009 CAPITAL WORKS
WATERMAIN RENEWALS
PEMBROKE ROAD (EAST LEG)
PEMBROKE ROAD (SOUTH LEG) TO
118 M NORTH OF PEMBROKE ROAD (SOUTH LEG)

SHEET 3 OF 4
CITY DRAWING NO.
D-11813