

- NOTES:**
1. ALL GATE VALVES ARE COUNTER-CLOCKWISE TO OPEN WITH A BLACK OPERATING NUT.
 2. WATERMAIN TO BE INSTALLED BY TRENCHLESS METHODS.
 3. BACKFILL IS CLASS 5 WITHIN BOULEVARD AND CLASS 3 WHEN WITHIN PAVEMENT/SIDEWALK OR WHEN WITHIN 1.0m OF PAVEMENT OR SIDEWALK.
 4. WATER SERVICES ARE 19mm UNLESS OTHERWISE NOTED.
 5. MINIMUM COVER TO TOP OF WATERMAIN SHALL BE 2.4m.
 6. LOCATION OF ALL SERVICES TO BE CONFIRMED IN FIELD.
 7. EXPOSE EXISTING WATERMAIN TO CONFIRM DEPTH PRIOR TO CONSTRUCTION.
 8. ALL LEAD SERVICES TO BE RENEWED TO PROPERTY LINE.
 9. SERVICES TO BE RENEWED SHALL BE REPLACED FROM WATERMAIN TO PROPERTY LINE. ALL OTHERS TO BE RECONNECTED.

---	WATERMAIN	---	REDUCER	---	150mm W.W.	WATERMAIN	150mm W.W.
⊕	HYDRANT	⊕	PLUG	⊕	300mm L.D.S.	VALVE	300mm L.D.S.
⊙	VALVE	⊙	TRAFFIC SIGNAL	⊙	250mm W.W.S.	LAND DRAINAGE SEWER	300mm L.D.S.
---	LAND DRAINAGE SEWER	---	GAS	---	---	WASTE WATER SEWER	250mm W.W.S.
---	WASTE WATER SEWER	---	HYDRO	---	---	JUNCTIONS	---
○	MANHOLE	●	M.T.S.	---	---	CULVERT	---
□	CATCH BASIN	⊕	SURVEY BAR	---	---	---	---
△	CURB INLET	▲	CURB STOP	---	---	---	---
⊕	TEE	⊕	C.B. LEAD	---	---	---	---
∩	BEND	∩	TREE	---	---	---	---
⊕	ANODE	⊕	LAMP STANDARD	---	---	---	---
---	EXISTING	---	LEGEND - PLAN	---	---	---	---
---	LEGEND - PLAN	---	PROPOSED	---	---	---	---
---	EXISTING	---	LEGEND - PLAN	---	---	---	---
---	LEGEND - PLAN	---	PROPOSED	---	---	---	---
---	EXISTING	---	LEGEND - PROFILE	---	---	---	---
---	LEGEND - PROFILE	---	PROPOSED	---	---	---	---

LOCATION APPROVED

SUPPLY, U/G STRUCTURES COMMITTEE

DATE

NOTE:
LOCATION OF UNDERGROUND STRUCTURES AS SHOWN ARE BASED ON THE BEST INFORMATION AVAILABLE BUT NOT GUARANTEED TO BE EXACT. ALL EXISTING UTILITIES ARE SHOWN OR THAT THE GIVEN LOCATIONS ARE EXACT. CONFIRMATION OF EXISTENCE AND EXACT LOCATION OF ALL SERVICES MUST BE OBTAINED FROM THE INDIVIDUAL UTILITIES BEFORE PROCEEDING WITH CONSTRUCTION.

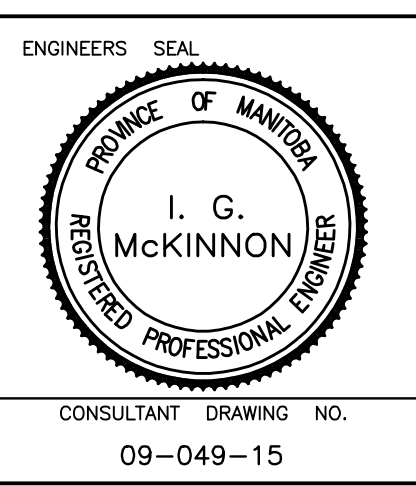
B.N. ELEV.	55-033	232.899
NO.	1	BID OPPORTUNITY 399-2009
REVISIONS		
DATE	MAY 09	DJ
DATE	MAY 09	DJ

GENIVAR
200 TACOMA AVENUE WINNIPEG, MANITOBA R2M 1A7
PH: (204)-235-2111 FAX: (204)-235-2080

DESIGNED BY: DJ
CHECKED BY: AB
DRAWN BY: AB
APPROVED BY: SM

HOR. SCALE: 1:250
VERT. SCALE: 1:50

RELEASED FOR CONSTRUCTION
SIGNED BY: K. ZUREK P. ENG
DATE: MAY 25, 2009



THE CITY OF WINNIPEG
WATER AND WASTE DEPARTMENT

2009 CAPITAL WORKS
WATERMAIN RENEWALS
WESTMOUNT DRIVE
FERMOR AVENUE TO
PEMBROKE ROAD

SHEET 1 OF 4
CITY DRAWING NO.
D-11811

CONSULTANT DRAWING NO. 09-049-15



METRIC
WHOLE NUMBERS INDICATE MILLIMETRES
DECIMALIZED NUMBERS INDICATE METRES

