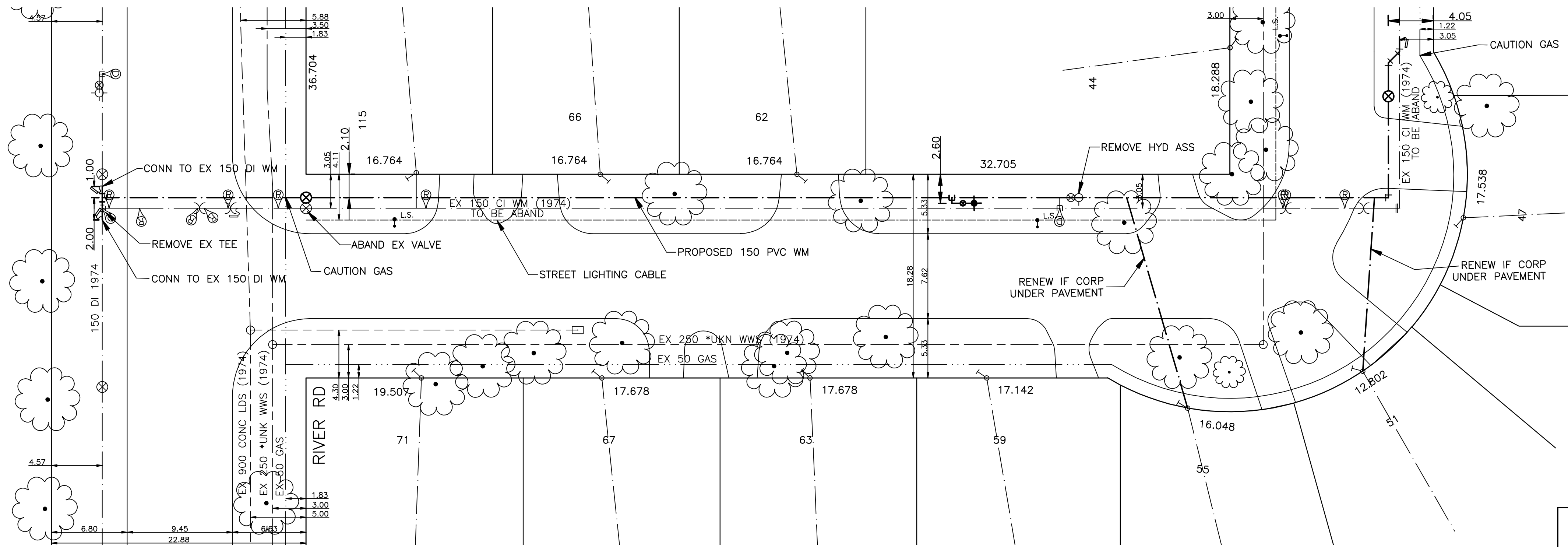


HOUSE WATER RENEWAL INFORMATION					
ADDRESS & NATURE OF SERVICE	SIZE (mm) & TYPE	SHORT & LONG MEASUREMENT	CORP LOCATION	REMARKS	
47 Falconer Bay Residential	19 Copper	7.3 RLHL		DR/WY A4465 C4383	
				SWR 150mm CONC	
51 Falconer Bay Residential	19 Copper	6.4 RLHL		DR/WY A4446 C4384	
				SWR 150mm CONC. SWIMMING POOL-1	
55 Falconer Bay Residential	19 Copper	4.3 LRHL		DR/WY A4447 C4385	
				SWR 150mm CONC. A7102	
59 Falconer Bay Residential	19 Copper	4.3 LRHL		DR/WY A4448 C4386	
				SWR 150mm CONC.	
62 Falconer Bay Residential	19 Copper	5.2 LRHL		DR/WY A4451 C4387	
				SWR 150mm CONC.	
63 Falconer Bay Residential	19 Copper	5.2 LRHL		DR/WY A4449 C4393	
				SWR 150mm CONC.	
66 Falconer Bay Residential	19 Copper	7.3 RLHL		DR/WY A4454 C4388	
				SWR 74	
67 Falconer Bay Residential	19 Copper	5.6 LRHL		DR/WY A4450 C4389	
				SWR 150mm CONC.	
71 Falconer Bay Residential	19 Copper	5.6 LRHL		DR/WY A5683 OFF RIVER RD C5403	
				SWR 150mm CONC.	

CHAINAGE ALONG EAST PROPERTY LINE OF FALCONER BAY

- NOTES:**
- ALL GATE VALVES ARE COUNTER-CLOCKWISE TO OPEN WITH A BLACK OPERATING NUT.
  - WATERMAIN TO BE INSTALLED BY TRENCHLESS METHODS.
  - BACKFILL IS CLASS 5 WITHIN BOULEVARD AND CLASS 3 WHEN WITHIN PAVEMENT/SIDEWALK OR WHEN WITHIN 1.0m OF PAVEMENT OR SIDEWALK.
  - WATER SERVICES ARE 19mm UNLESS OTHERWISE NOTED.
  - MINIMUM COVER TO TOP OF WATERMAIN SHALL BE 2.4m.
  - LOCATION OF ALL SERVICES TO BE CONFIRMED IN FIELD.
  - EXPOSE EXISTING WATERMAIN TO CONFIRM DEPTH PRIOR TO CONSTRUCTION.
  - ALL LEAD SERVICES TO BE RENEWED TO PROPERTY LINE.
  - SERVICES TO BE RENEWED SHALL BE REPLACED FROM WATERMAIN TO PROPERTY LINE. ALL OTHERS TO BE RECONNECTED.



METRIC  
WHOLE NUMBERS INDICATE MILLIMETRES  
DECIMAL NUMBERS INDICATE METRES



EXISTING	LEGEND - PLAN	PROPOSED	EXISTING	LEGEND - PLAN	PROPOSED	EXISTING	LEGEND - PROFILE	PROPOSED
---	WATERMAIN	---	REDUCER	---	150mm W.W.	---	WATERMAIN	---
+	HYDRANT VALVE	+	PLUG	+	150mm W.W.	+	VALVE	+
---	LAND DRAINAGE SEWER	---	TRAFFIC SIGNAL	---	300mm L.D.S.	---	LAND DRAINAGE SEWER	---
---	WASTE WATER SEWER	---	GAS	---	250mm W.W.S.	---	WASTE WATER SEWER	---
○	MANHOLE	●	HYDRO	---	---	---	JUNCTIONS	---
□	CATCH BASIN	■	M.T.S.	---	---	---	CULVERT	---
△	CURB INLET	▲	SURVEY BAR	---	---	---	---	---
+	TEE	+	CURB STOP	---	---	---	---	---
∩	BEND	∩	C.B. LEAD	---	---	---	---	---
⊕	ANODE	⊕	TREE	---	---	---	---	---
---	---	---	LAMP STANDARD	---	---	---	---	---

LOCATION APPROVED

NOTE:  
LOCATION OF UNDERGROUND STRUCTURES AS SHOWN ARE BASED ON THE BEST INFORMATION AVAILABLE BUT NO GUARANTEE IS GIVEN THAT ALL EXISTING UTILITIES ARE SHOWN OR THAT THE GIVEN LOCATIONS ARE EXACT. CONFIRMATION OF EXISTENCE AND EXACT LOCATION OF ALL SERVICES MUST BE OBTAINED FROM THE INDIVIDUAL UTILITIES BEFORE PROCEEDING WITH CONSTRUCTION.

B.N. ELEV.	63-036	231.843		
DESIGNED BY	AB	CHECKED BY	DJ	
DRAWN BY	AB	APPROVED BY	SM	
HOR. SCALE:	1:250	RELEASED FOR CONSTRUCTION	DATE	MAY 25, 2009
VERT. SCALE:	1:50	ORIGINALLY SIGNED BY	K. ZUREK P. ENG	
CONSULTANT DRAWING NO.	09-049-13			

**GENIVAR**  
10 PRAIRIE WAY WINNIPEG, MANITOBA R2J 3J8  
PH: (204)-477-8650 FAX: (204)-474-2884

ENGINEERS SEAL  
**I. G. MCKINNON**  
REGISTERED PROFESSIONAL ENGINEER

**THE CITY OF WINNIPEG**  
WATER AND WASTE DEPARTMENT

2009 CAPITAL WORKS  
WATERMAIN RENEWALS  
FALCONER BAY (WEST LEG)

RIVER ROAD TO  
FALCONER BAY (SOUTH LEG)