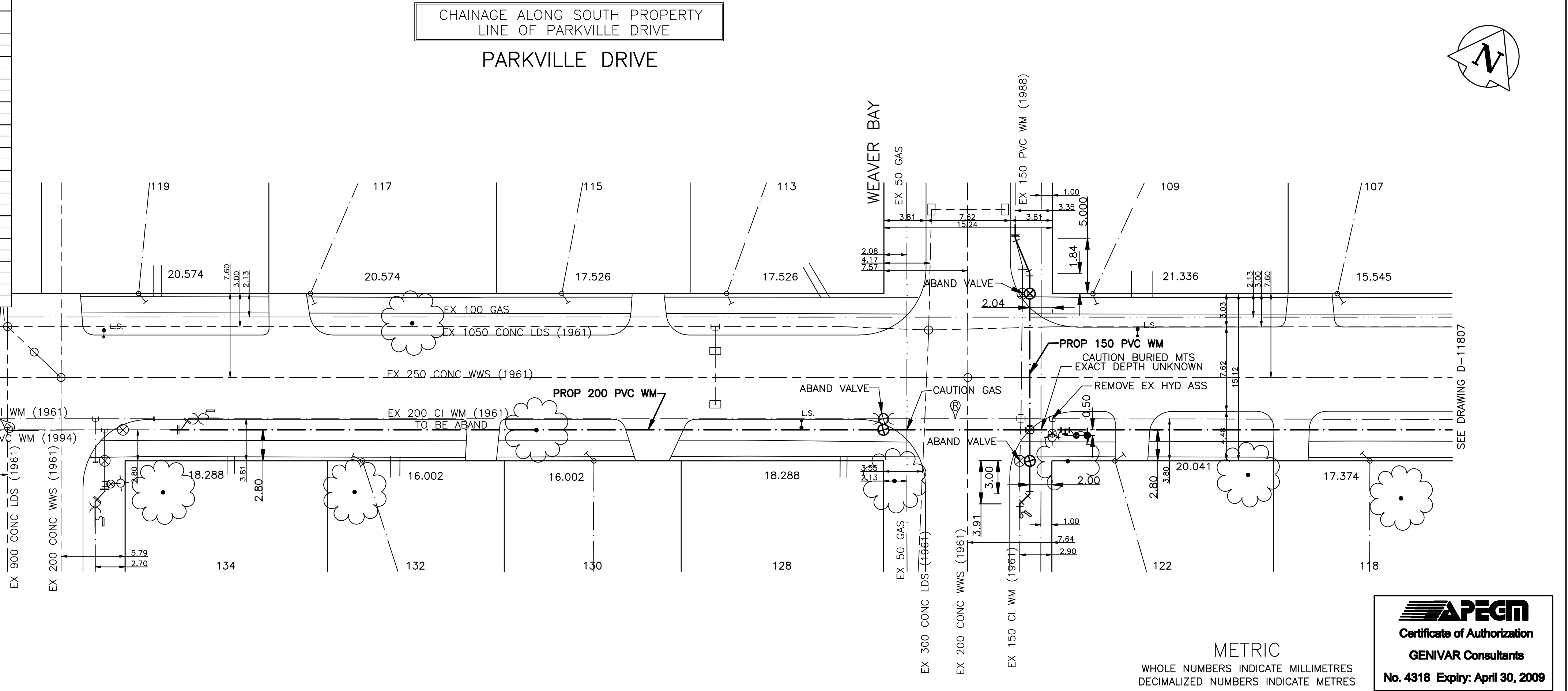


HOUSE WATER SERVICE INFORMATION					
ADDRESS & NATURE OF SERVICE	SIZE (mm) & TYPE	SHORT & LONG MEASUREMENT	CORP LOCATION	REMARKS	
107 Parkville Drive Residential	19 Copper	1.2 E/WHL		DR/WY/61 SEWER/61	
109 Parkville Drive Residential	19 Copper	4.3 W/WHL		DR/WY/61 SEWER/61	
113 Parkville Drive Residential	19 Copper	2.1 E/WHL		DR/WY '61	
115 Parkville Drive Residential	19 Copper	4.7 E/WHL		DR/WY '61	
117 Parkville Drive Residential	19 Copper	0.3 E/WHL 1.4 IN LAWN		DR/WY '62	
118 Parkville Drive Residential	19 Copper	5.5 E/WHL		DR/WY 0141 SEWER/63	
119 Parkville Drive Residential	19 Copper	4.9 E/WHL		DR/WY '62	
122 Parkville Drive Residential	19 Copper	1.2 E/WHL		DR/WY 0225 A5125 SEWER/62	
128 Parkville Drive Residential	19 Copper	1.8 SNHL ON PARKVILLE BAY		DR/WY 0047 SEWER/61	
130 Parkville Drive Residential	19 Copper	3.7 WEHL		SEWER/61	
132 Parkville Drive Residential	19 Copper	2.3 WEHL		DR/WY C15355	
134 Parkville Drive Residential	19 Copper	4 N S HSE LINE		DR/WY #0005 SEWER/62	

NOTES:

- ALL GATE VALVES ARE COUNTER-CLOCKWISE TO OPEN WITH A BLACK OPERATING NUT.
- WATERMAIN TO BE INSTALLED BY TRENCHLESS METHODS.
- BACKFILL IS CLASS 5 WITHIN BOULEVARD AND CLASS 3 WHEN WITHIN PAVEMENT/SIDEWALK OR WHEN WITHIN 1.0m OF PAVEMENT OR SIDEWALK.
- WATER SERVICES ARE 19mm UNLESS OTHERWISE NOTED.
- MINIMUM COVER TO TOP OF WATERMAIN SHALL BE 2.4m.
- LOCATION OF ALL SERVICES TO BE CONFIRMED IN FIELD.
- EXPOSE EXISTING WATERMAIN TO CONFIRM DEPTH PRIOR TO CONSTRUCTION.
- ALL LEAD SERVICES TO BE RENEWED TO PROPERTY LINE.
- SERVICES TO BE RENEWED SHALL BE REPLACED FROM WATERMAIN TO PROPERTY LINE. ALL OTHERS TO BE RECONNECTED.



EXISTING	LEGEND - PLAN	PROPOSED	EXISTING	LEGEND - PLAN	PROPOSED
—	WATERMAIN	—	—	REDUCER	—
—	HYDRANT VALVE	—	—	PLUG	—
—	LAND DRAINAGE SEWER	—	—	TRAFFIC SIGNAL	—
—	WASTE WATER SEWER	—	—	GAS	—
○	MANHOLE	●	—	HYDRO	—
□	CATCH BASIN	■	—	M.T.S.	—
△	CURB INLET	▲	—	SURVEY BAR	—
—	TEE	—	—	CURB STOP	—
—	BEND	—	—	C.B. LEAD	—
—	ANODE	—	—	TREE	—
—	LEGEND - PLAN	PROPOSED	—	LAMP STANDARD	—

EXISTING	LEGEND - PROFILE	PROPOSED
—	150mm W.M.	—
—	300mm L.D.S.	—
—	250mm W.W.S.	—
—	LAND DRAINAGE SEWER	—
—	WASTE WATER SEWER	—
—	JUNCTIONS	—
—	CULVERT	—

LOCATION APPROVED

SUPPLY, U/G STRUCTURES COMMITTEE

NOTE:
LOCATION OF UNDERGROUND STRUCTURES AS SHOWN ARE BASED ON THE BEST INFORMATION AVAILABLE BUT NO GUARANTEE IS GIVEN THAT ALL EXISTING UTILITIES ARE SHOWN OR THAT THE GIVEN LOCATIONS ARE EXACT. CONFIRMATION OF EXISTENCE AND EXACT LOCATION OF ALL SERVICES MUST BE OBTAINED FROM THE INDIVIDUAL UTILITIES BEFORE PROCEEDING WITH CONSTRUCTION.

B.N. ELEV.	63-036 231.843
DESIGNED BY	AB
CHECKED BY	DJ
DRAWN BY	AB
APPROVED BY	SM
HOR. SCALE:	1:250
VERT. SCALE:	1:50
RELEASED FOR CONSTRUCTION	DATE
ORIGINALLY SIGNED BY	K. ZUREK P. ENG
DATE	MAY 25, 2009
CONSULTANT DRAWING NO.	09-049-10

GENIVAR
10 PRAIRIE WAY WINNIPEG, MANITOBA R2J 3J8
PH: (204)-477-6850 FAX: (204)-474-2864

ENGINEERS SEAL
PROVINCE OF MANITOBA
REGISTERED PROFESSIONAL ENGINEER
I. G. MCKINNON

THE CITY OF WINNIPEG
WATER AND WASTE DEPARTMENT

2009 CAPITAL WORKS
WATERMAIN RENEWALS
PARKVILLE DRIVE
PARKVILLE BAY (EAST LEG) TO
36M EAST OF WEAVER BAY

SHEET 1 OF 3
CITY DRAWING NO.
D-11806

WHOLE NUMBERS INDICATE MILLIMETRES
DECIMALIZED NUMBERS INDICATE METRES

APCM
Certificate of Authorization
GENIVAR Consultants
No. 4318 Expiry: April 30, 2009