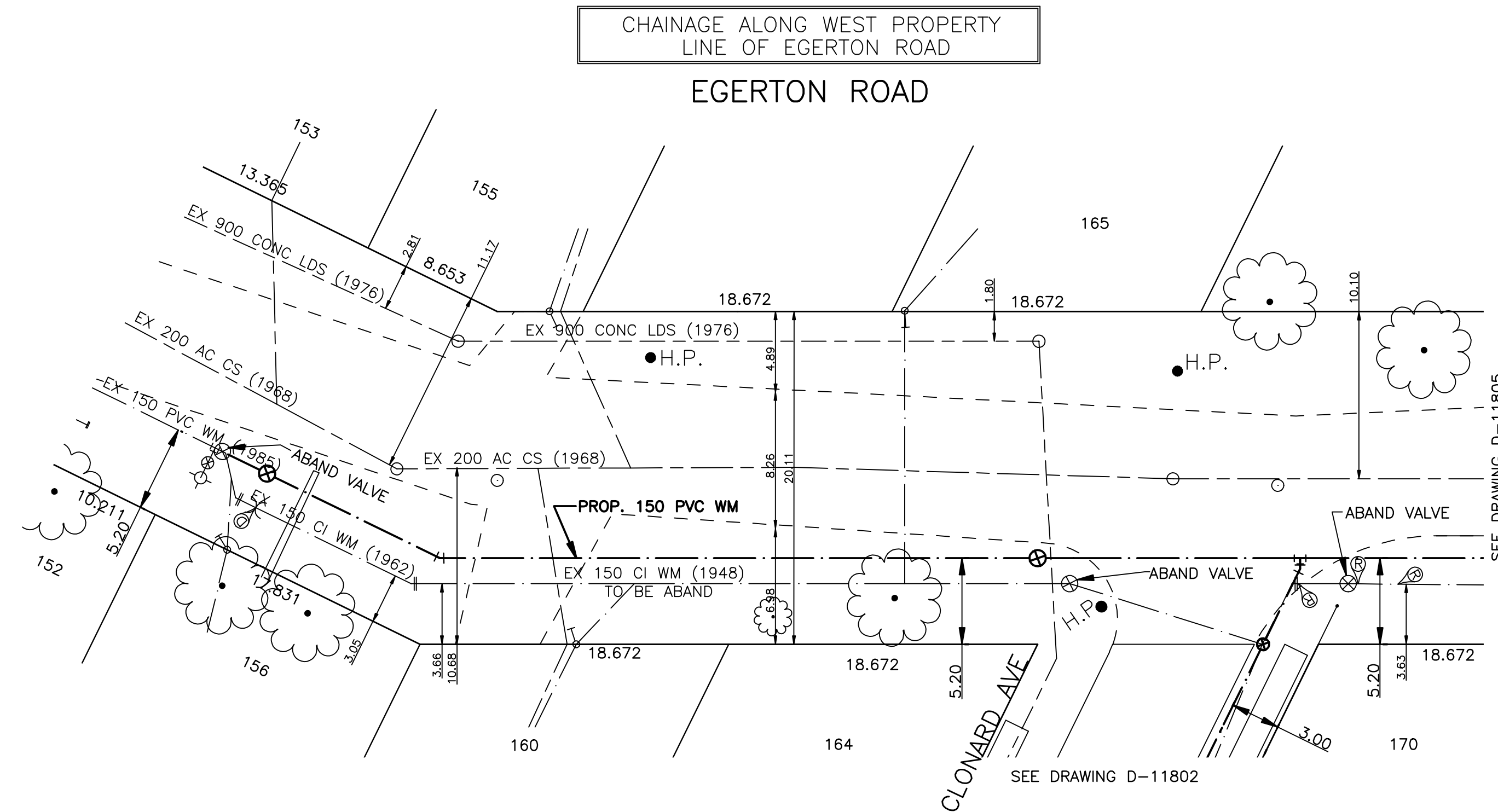


| HOUSE WATER SERVICE INFORMATION | | | | | |
|---------------------------------|------------------|---|---------------|---|--|
| ADDRESS & NATURE OF | SIZE (mm) & TYPE | SHORT & LONG | CORP LOCATION | REMARKS | |
| 152 Egerton Road Residential | 19 Copper | 1.2 WWHL | | | |
| 153 Egerton Road Residential | 13 Copper | 2.1 R/L HL | | | |
| 155 Egerton Road Residential | 19 Copper | 1.5 WSL OF GARAGE 32 OUT FROM GARAGE | | DR/WY/62_96/01/31 RENEWED LEAKING S/C BOX | |
| 156 Egerton Road Residential | 13 Copper | 4 L/R | | SEWER 150mm CONCRETE 1 NV @ HOUSE 228.34 @ PL 228.58 | |
| 160 Egerton Road Residential | 19 Copper | 7 L/RHL 25.6 S/HYDT | 26.37 S/HYDT | TAX STV/8475-08 AUG 17/88 - NEW | |
| 164 Egerton Road Residential | 13 Copper | 4 EWHL | | DR/WY/62_96/01/31 | |
| 165 Egerton Road Residential | 19 Copper | 7 N/NHL | OPP S/C | SEWER 150mm CONCRETE INV @ HSE 228.01 @ PL 228.78 | |
| 170 Egerton Road Residential | 13 Copper | 3.4 EWHL | | DR/WY 0142 SER IN DRIVEWAY | |



- NOTES:**
- ALL GATE VALVES ARE COUNTER-CLOCKWISE TO OPEN WITH A BLACK OPERATING NUT.
 - WATERMAIN TO BE INSTALLED BY TRENCHLESS METHODS.
 - BACKFILL IS CLASS 5 WITHIN BOULEVARD AND CLASS 3 WHEN WITHIN PAVEMENT/SIDEWALK OR WHEN WITHIN 1.0m OF PAVEMENT OR SIDEWALK.
 - WATER SERVICES ARE 19mm UNLESS OTHERWISE NOTED.
 - MINIMUM COVER TO TOP OF WATERMAIN SHALL BE 2.4m.
 - LOCATION OF ALL SERVICES TO BE CONFIRMED IN FIELD.
 - EXPOSE EXISTING WATERMAIN TO CONFIRM DEPTH PRIOR TO CONSTRUCTION.
 - ALL LEAD SERVICES TO BE RENEWED TO PROPERTY LINE.
 - SERVICES TO BE RENEWED SHALL BE REPLACED FROM WATERMAIN TO PROPERTY LINE. ALL OTHERS TO BE RECONNECTED.

METRIC
WHOLE NUMBERS INDICATE MILLIMETRES
DECIMALIZED NUMBERS INDICATE METRES

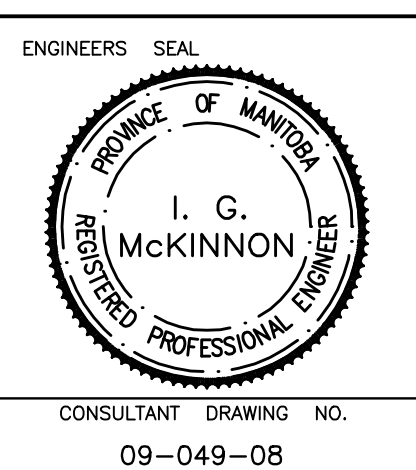


| | | | | | | | |
|-----|---------------------|-----|----------------|-----|--------------|---------------------|--------------|
| --- | WATERMAIN | --- | REDUCER | --- | 150mm W.W. | WATERMAIN | 150mm W.W. |
| ⊕ | HYDRANT VALVE | ⊕ | PLUG | ⊕ | 300mm L.D.S. | LAND DRAINAGE SEWER | 300mm L.D.S. |
| ⊕ | LAND DRAINAGE SEWER | ⊕ | TRAFFIC SIGNAL | ⊕ | 250mm W.W.S. | WASTE WATER SEWER | 250mm W.W.S. |
| ⊕ | WASTE WATER SEWER | ⊕ | GAS | ⊕ | | JUNCTIONS | |
| ○ | MANHOLE | ● | HYDRO | ⊕ | | CULVERT | |
| ⊕ | CATCH BASIN | ⊕ | M.T.S. | ⊕ | | | |
| ⊕ | CURB INLET | ⊕ | SURVEY BAR | ⊕ | | | |
| ⊕ | TEE | ⊕ | CURB STOP | ⊕ | | | |
| ⊕ | BEND | ⊕ | C.B. LEAD | ⊕ | | | |
| ⊕ | ANODE | ⊕ | TREE | ⊕ | | | |
| --- | EXISTING | --- | LAMP STANDARD | --- | | | |
| --- | LEGEND - PLAN | --- | PROPOSED | --- | | | |

| | | | |
|--|---------------------------------|-------------|---------------|
| LOCATION APPROVED | | B.N. 54-002 | ELEV. 231.653 |
| SUPPLY, U/G STRUCTURES | DATE | | |
| COMMITTEE | | | |
| NOTE: LOCATION OF UNDERGROUND STRUCTURES AS SHOWN ARE BASED ON THE BEST INFORMATION AVAILABLE BUT NO GUARANTEE IS GIVEN THAT ALL EXISTING UTILITIES ARE SHOWN OR THAT THE GIVEN LOCATIONS ARE EXACT. CONFIRMATION OF EXISTENCE AND EXACT LOCATION OF ALL SERVICES MUST BE OBTAINED FROM THE INDIVIDUAL UTILITIES BEFORE PROCEEDING WITH CONSTRUCTION. | | | |
| 1 | BID OPPORTUNITY NUMBER 399-2009 | MAY 09 | AB |
| NO. | REVISIONS | DATE | BY |

GENIVAR
10 PRAIRIE WAY WINNIPEG, MANITOBA R2J 3J6
PH: (204)-477-8650 FAX: (204)-474-2864

| | | | |
|--------------|-------|---------------------------|----------------------|
| DESIGNED BY | DJ | CHECKED BY | AB |
| DRAWN BY | AB | APPROVED BY | SM |
| HOR. SCALE: | 1:250 | RELEASED FOR CONSTRUCTION | ORIGINALLY SIGNED BY |
| VERT. SCALE: | 1:50 | DATE | K. ZUREK P. ENG |
| | | DATE | MAY 25, 2009 |



THE CITY OF WINNIPEG
WATER AND WASTE DEPARTMENT

2009 CAPITAL WORKS
WATERMAIN RENEWALS
EGERTON ROAD
CLONARD AVENUE TO
50M NORTH OF CLONARD AVENUE

SHEET 3 OF 4
CITY DRAWING NO.
D-11804

CONSULTANT DRAWING NO. 09-049-08