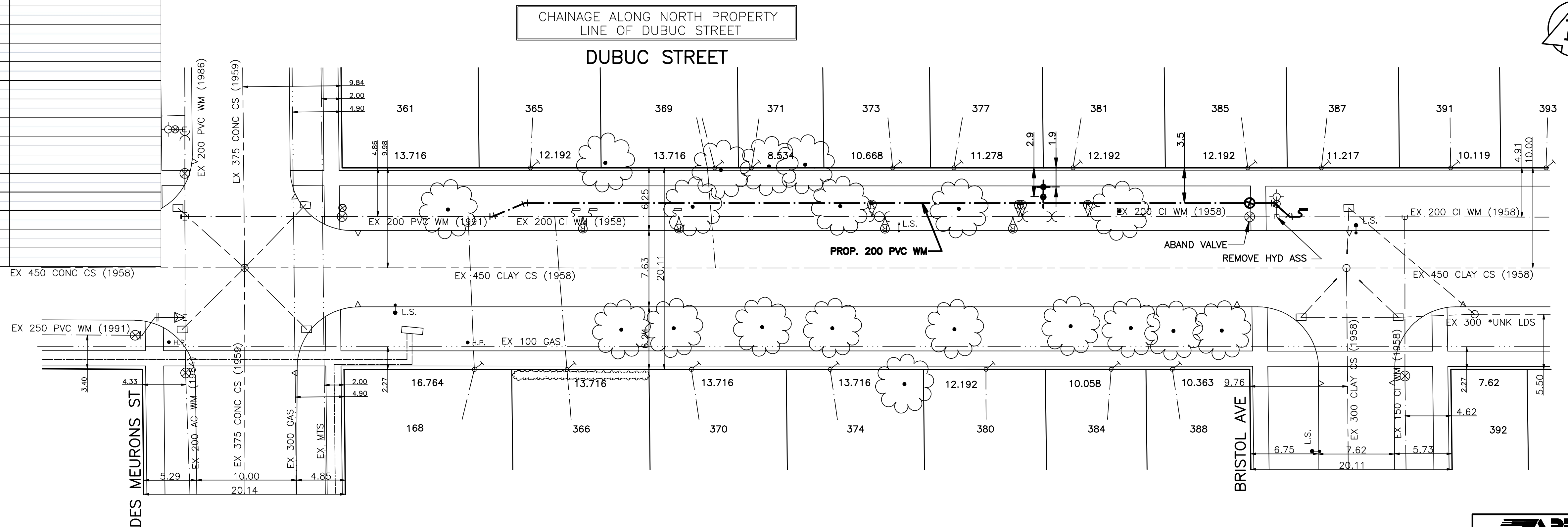


HOUSE WATER SERVICE INFORMATION					
ADDRESS & NATURE OF SERVICE	SIZE (mm) & TYPE	SHORT & LONG MEASUREMENT	CORP LOCATION	REMARKS	
361 Dubuc Street Residential	19 Copper	3.4 R/LHL	7.1 N/HYD		
365 Dubuc Street Residential	19 Copper	2.2 R/LHL			
366 Dubuc Street Residential	19 Copper	3 E/WHL	1.2 W OF S/C		
369 Dubuc Street Residential	19 Copper	0.9 W/EHL		SEWER & WATER IN SAME TRENCH	
371 Dubuc Street Residential	19 Copper	37.1 EEL DES MEURONS			
370 Dubuc Street Residential	19 Copper	0.9 L/RHL		OLD SRV DEMO??	
371 Dubuc Street Residential	19 Copper	0.5 L/LHL			
373 Dubuc Street Residential	19 Copper	40.5 EEL DES MEURONS			
374 Dubuc Street Residential	19 Copper	1.8 L/RHL			
374 Dubuc Street Residential	19 Copper	0.8 L/RHL			
377 Dubuc Street Residential	19 Copper	0.5 R/LHL			
380 Dubuc Street Residential	19 Copper	59.7 EEL DES MEURONS			
380 Dubuc Street Residential	19 Copper	4.3 R/RHL			
381 Dubuc Street Residential	19 Copper	1.7 R/LHL			
384 Dubuc Street Residential	19 Copper	72.5 EEL DES MEURONS			
384 Dubuc Street Residential	19 Copper	4.9 R/RHL			
385 Dubuc Street Residential	25 Copper	3 L/RHL			
387 Dubuc Street Residential	19 Copper	0.6 R/LHL			
388 Dubuc Street Residential	19 Copper	0.6 R/RHL			
391 Dubuc Street Residential	19 Copper	24.1 W/MH AT BRISTOL			
391 Dubuc Street Residential	19 Copper	1.2 R/LHL			
392 Dubuc Street Residential	19 Copper	0.2 R/LHL			
393 Dubuc Street Residential	19 Copper	0.7 R/LHL			



- NOTES:**
- ALL GATE VALVES ARE COUNTER-CLOCKWISE TO OPEN WITH A BLACK OPERATING NUT.
 - WATERMAIN TO BE INSTALLED BY TRENCHLESS METHODS.
 - BACKFILL IS CLASS 5 WITHIN BOULEVARD AND CLASS 3 WHEN WITHIN PAVEMENT/SIDEWALK OR WHEN WITHIN 1.0m OF PAVEMENT OR SIDEWALK.
 - WATER SERVICES ARE 19mm UNLESS OTHERWISE NOTED.
 - MINIMUM COVER TO TOP OF WATERMAIN SHALL BE 2.4m.
 - LOCATION OF ALL SERVICES TO BE CONFIRMED IN FIELD.
 - EXPOSE EXISTING WATERMAIN TO CONFIRM DEPTH PRIOR TO CONSTRUCTION.
 - ALL LEAD SERVICES TO BE RENEWED TO PROPERTY LINE.
 - SERVICES TO BE RENEWED SHALL BE REPLACED FROM WATERMAIN TO PROPERTY LINE. ALL OTHERS TO BE RECONNECTED.

APECM
 Certificate of Authorization
GENIVAR Consultants
 No. 4318 Expiry: April 30, 2010

METRIC
 WHOLE NUMBERS INDICATE MILLIMETRES
 DECIMALIZED NUMBERS INDICATE METRES

EXISTING	LEGEND - PLAN	PROPOSED	EXISTING	LEGEND - PLAN	PROPOSED
—	WATERMAIN	—	—	REDUCER	—
—	HYDRANT VALVE	—	—	PLUG	—
—	LAND DRAINAGE SEWER	—	—	TRAFFIC SIGNAL	—
—	WASTE WATER SEWER	—	—	GAS	—
○	MANHOLE	●	—	HYDRO	—
□	CATCH BASIN	■	—	M.T.S.	—
△	CURB INLET	▲	—	SURVEY BAR	—
▭	TEE	▭	—	CURB STOP	—
∩	BEND	∩	—	C.B. LEAD	—
—	ANODE	—	—	TREE	—
—	LEGEND - PLAN	PROPOSED	—	LAMP STANDARD	—

LOCATION APPROVED

SUPV. U/G STRUCTURES COMMITTEE DATE

NOTE:
 LOCATION OF UNDERGROUND STRUCTURES AS SHOWN ARE BASED ON THE BEST INFORMATION AVAILABLE BUT NO GUARANTEE IS GIVEN THAT ALL EXISTING UTILITIES ARE SHOWN OR THAT THE GIVEN LOCATIONS ARE EXACT. CONFIRMATION OF EXISTENCE AND EXACT LOCATION OF ALL SERVICES MUST BE OBTAINED FROM THE INDIVIDUAL UTILITIES BEFORE PROCEEDING WITH CONSTRUCTION.

B.A. 34-009
 ELEV. 231.143

GENIVAR
 10 PRINCE WAY WINNIPEG, MANITOBA R2J 3J8
 PH: (204)-477-8850 FAX: (204)-474-2884

DESIGNED BY: DJ
 CHECKED BY: AB
 DRAWN BY: AB
 APPROVED BY: SM

HOR. SCALE: 1:250
 VERT. SCALE: 1:50

RELEASED FOR ORIGINAL CONSTRUCTION
 SIGNED BY: K. ZUREK P. ENG
 DATE: MAY 25, 2009

CONSULTANT DRAWING NO. 09-049-05

ENGINEERS SEAL
I. G. MCKINNON
 REGISTERED PROFESSIONAL ENGINEER
 PROVINCE OF MANITOBA

THE CITY OF WINNIPEG
 WATER AND WASTE DEPARTMENT

2009 CAPITAL WORKS
 WATERMAIN RENEWALS
 DUBUC STREET
 DES MEURONS STREET TO
 BRISTOL AVENUE

SHEET 1 OF 1
 CITY DRAWING NO. D-11801