

- NOTES:**
1. ALL GATE VALVES ARE COUNTER-CLOCKWISE TO OPEN WITH A BLACK OPERATING NUT.
  2. WATERMAIN TO BE INSTALLED BY TRENCHLESS METHODS.
  3. BACKFILL IS CLASS 5 WITHIN BOULEVARD AND CLASS 3 WHEN WITHIN PAVEMENT/SIDEWALK OR WHEN WITHIN 1.0m OF PAVEMENT OR SIDEWALK.
  4. WATER SERVICES ARE 19mm UNLESS OTHERWISE NOTED.
  5. MINIMUM COVER TO TOP OF WATERMAIN SHALL BE 2.4m.
  6. LOCATION OF ALL SERVICES TO BE CONFIRMED IN FIELD.
  7. EXPOSE EXISTING WATERMAIN TO CONFIRM DEPTH PRIOR TO CONSTRUCTION.
  8. ALL LEAD SERVICES TO BE RENEWED TO PROPERTY LINE.
  9. SERVICES TO BE RENEWED SHALL BE REPLACED FROM WATERMAIN TO PROPERTY LINE. ALL OTHERS TO BE RECONNECTED.

HOUSE WATER SERVICE INFORMATION				
ADDRESS & NATURE OF SERVICE	SIZE (mm) & TYPE	SHORT & LONG MEASUREMENT	CORP LOCATION	REMARKS
165 St Mary's Road Residential	25 Copper			SEW/JCT 0.15 CONC CONNECTION (EXISTING) SEW/PL SAME AS S/C
167 St Mary's Road Commercial	19 Copper			
177 St Mary's Road Residential	19 Copper			SEWER/WATER C/O @ CORP 3.88 W OF W PL 157 KENNY & SEWER C/O FR PL 7.32 TOMAR SEWER/55
187 St Mary's Road Commercial	19 Copper			
188 St Mary's Road Residential	150			SEWER/69 JUL01-6X1 150mm CLAMP INSTALLED 0.915 N/EPL



METRIC  
WHOLE NUMBERS INDICATE MILLIMETRES  
DECIMALIZED NUMBERS INDICATE METRES

EXISTING	LEGEND - PLAN	PROPOSED	EXISTING	LEGEND - PLAN	PROPOSED	EXISTING	LEGEND - PROFILE	PROPOSED
—	WATERMAIN	—	—	REDUCER	—	—	WATERMAIN VALVE	—
—	HYDRANT	—	—	PLUG	—	—	LAND DRAINAGE SEWER	—
—	VALVE	—	—	TRAFFIC SIGNAL	—	—	WASTE WATER SEWER	—
—	LAND DRAINAGE SEWER	—	—	GAS	—	—	JUNCTIONS	—
—	WASTE WATER SEWER	—	—	HYDRO	—	—	CULVERT	—
—	MANHOLE	—	—	M.T.S.	—	—		
—	CATCH BASIN	—	—	SURVEY BAR	—	—		
—	CURB INLET	—	—	CURB STOP	—	—		
—	TEE	—	—	C.B. LEAD	—	—		
—	BEND	—	—	TREE	—	—		
—	ANODE	—	—	LAMP STANDARD	—	—		

LOCATION APPROVED

SUPV. U/G STRUCTURES COMMITTEE

DATE

NOTE:  
LOCATION OF UNDERGROUND STRUCTURES AS SHOWN ARE BASED ON THE BEST INFORMATION AVAILABLE BUT NO GUARANTEE IS GIVEN THAT ALL EXISTING UTILITIES ARE SHOWN OR THAT THE GIVEN LOCATIONS ARE EXACT. CONFIRMATION OF EXISTENCE AND EXACT LOCATION OF ALL SERVICES MUST BE OBTAINED FROM THE INDIVIDUAL UTILITIES BEFORE PROCEEDING WITH CONSTRUCTION.

B.N. 34-005  
ELEV. 229.798

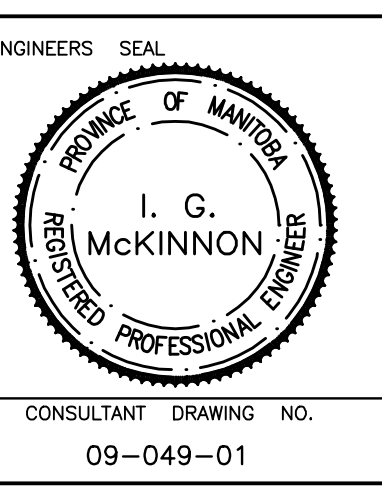
**GENIVAR**  
10 PRINCE WAY WINNIPEG, MANITOBA R2J 3J8  
PH: (204)-477-8650 FAX: (204)-474-2884

DESIGNED BY: DJ  
CHECKED BY: AB

DRAWN BY: AB  
APPROVED BY: SM

HOR. SCALE: 1:250  
VERT. SCALE: 1:50

RELEASED FOR CONSTRUCTION  
SIGNED BY: K. ZUREK P. ENG  
DATE: MAY 25, 2009



**THE CITY OF WINNIPEG**  
WATER AND WASTE DEPARTMENT

2009 CAPITAL WORKS  
WATERMAIN RENEWALS  
ST MARY'S ROAD  
75M NORTH OF KENNY STREET TO  
KENNY STREET

SHEET 1 OF 4  
CITY DRAWING NO.  
D-11797