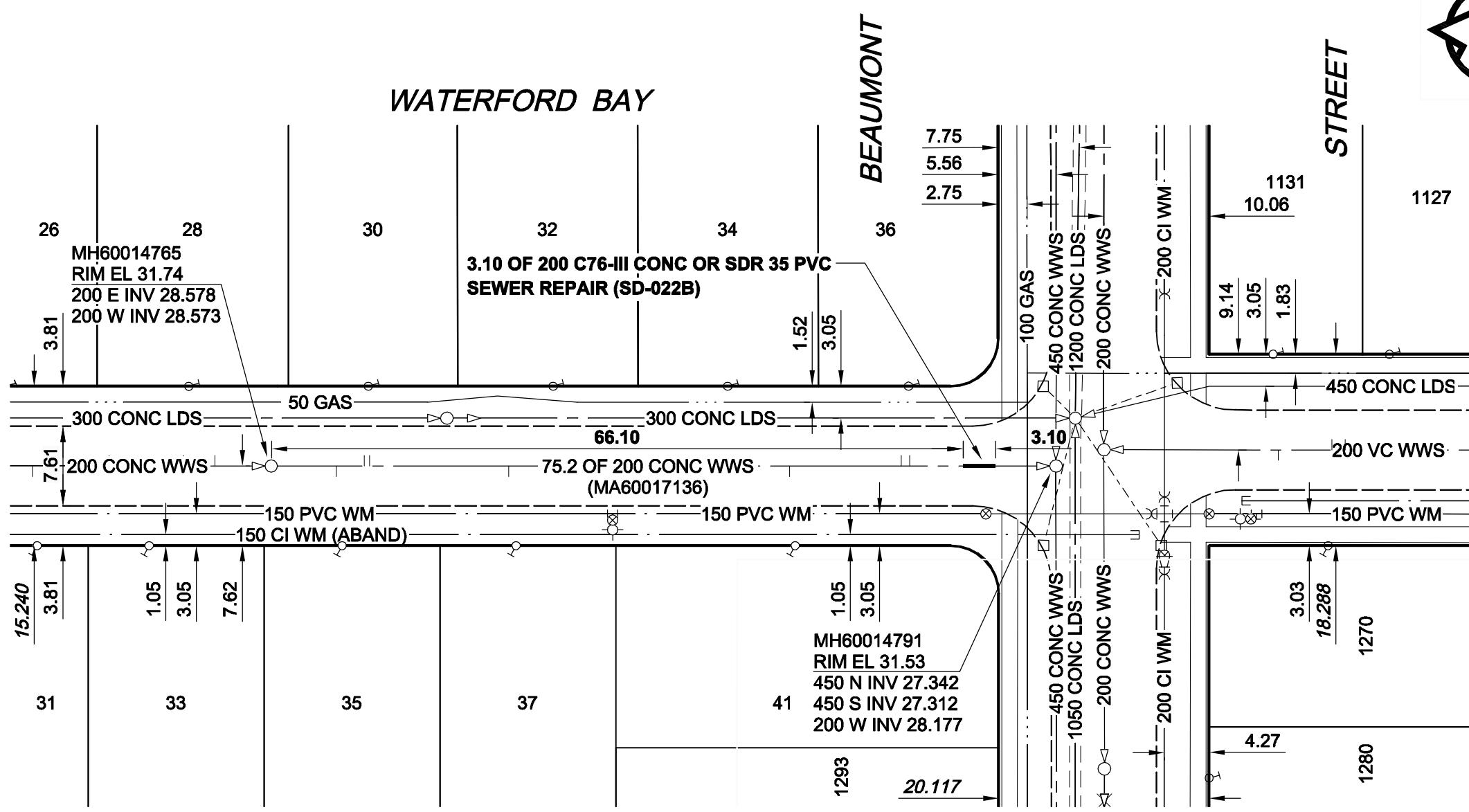


B SIZE 11" x 17" (279mm x 432mm)

PLOT: 7/30/2009 4:34:27 PM

FILE NAME: D265-244-02_01-C-1034_RX.dwg Saved By: berarok



MA60047136
SEWER JUNCTION INFORMATION*

REF. MH	DIST FROM REF. MH	SIZE	CLOCK AT
MH60014765	6.20	150Ø	03
MH60014765	8.90	150Ø	11
MH60014765	9.40	150Ø	10
MH60014765	22.70	150Ø	02
MH60014765	26.60	150Ø	10
MH60014765	27.80	150Ø	10
MH60014765	28.60	150Ø	10
MH60014765	43.20	150Ø	10
MH60014765	44.00	150Ø	11
MH60014765	49.50	150Ø	02
MH60014765	60.20	150Ø	10
MH60014765	61.00	150Ø	10

*JUNCTION INFORMATION FROM VIDEO INSPECTION

- CONSTRUCTION NOTES:**
- CONTRACTOR TO VERIFY LIMITS OF SEWER REPAIRS PRIOR TO EXCAVATION BY MEANS OF VIDEO INSPECTION.
 - CONTRACTOR TO PROVIDE VIDEO INSPECTION OF SEWER SERVICES WITHIN LIMITS OF REPAIR IN PRESENCE OF CONTRACT ADMINISTRATOR TO DETERMINE IF SERVICE RENEWAL IS REQUIRED.
 - ALL BACKFILL TO BE CLASS 5 BACKFILL UNDER BOULEVARDS AND CLASS 3 UNDER OR WITHIN 1.0m OF PAVEMENTS AND SIDEWALKS.

WARNING

IF POWER EQUIPMENT OR EXPLOSIVES ARE TO BE USED FOR EXCAVATION ON THIS PROJECT, THE CONTRACTOR MUST:
 1) NOTIFY THE GAS COMPANY OF THE PROPOSED LOCATION OF EXCAVATION.
 2) TAKE PRECAUTION TO AVOID DAMAGE TO GAS COMPANY INSTALLATIONS.
 SEE PROVINCIAL REGULATION 140/92 FOR DETAILS

METRIC
 WHOLE NUMBERS INDICATE MILLIMETRES
 DECIMALIZED NUMBERS INDICATE METRES

AECOM
 Certificate of Authorization
 AECOM Canada Ltd.
 No. 4671 Date: 09/07/29

BID OPPORTUNITY NO. 374-2009

LOCATION APPROVED UNDERGROUND STRUCTURES

SUPR. U/G STRUCTURES COMMITTEE	DATE

NOTE:
 LOCATION OF UNDERGROUND STRUCTURES AS SHOWN ARE BASED ON THE BEST INFORMATION AVAILABLE. BUT NO GUARANTEE IS GIVEN THAT ALL EXISTING UTILITIES ARE SHOWN OR THAT THE GIVEN LOCATIONS ARE EXACT. CONFIRMATION OF EXISTENCE AND EXACT LOCATION OF ALL SERVICES MUST BE OBTAINED FROM THE INDIVIDUAL UTILITIES BEFORE PROCEEDING WITH CONSTRUCTION.

NO.	REVISIONS	YY/MM/DD	BY
0	ISSUED FOR CONSTRUCTION	09/07/24	KMB

AECOM

© 2009 AECOM Canada Ltd. All Rights Reserved. This document is protected by copyright law and may not be used, reproduced or modified in any manner or for any purpose except with the written permission of AECOM Canada Ltd. ("AECOM") or a party to which its copyright has been assigned. AECOM accepts no responsibility, and denies any liability whatsoever, to any party that uses, reproduces, modifies, or relies on this document without AECOM's express written consent.

DESIGNED BY	PL	CHECKED BY	ALD
DRAWN BY	KMB	APPROVED BY	KWF
HOR. SCALE	1:500	RELEASED FOR CONSTRUCTION	KZ
VERT. SCALE	N/A		
DATE	09/07/29	DATE	July 30/09

PROFESSIONAL'S SEAL

ISSUED FOR CONSTRUCTION WAS SEALED BY
 K. W. FITCHETT
 AND DATED
 JULY 29/09

CONSULTANT DRAWING NO.
 D265-244-02_01-C-1034_RX.dwg

THE CITY OF WINNIPEG
WATER AND WASTE DEPARTMENT

2009 WASTE WATER SEWER RENEWALS BY REPAIRS AND REPLACEMENTS CONTRACT 18

WATERFORD BAY (S LEG)
 50m E OF BURGUNDY CRESCENT TO BEAUMONT STREET

SHEET 34 OF 35
 CITY DRAWING NUMBER **8904** REV 0