

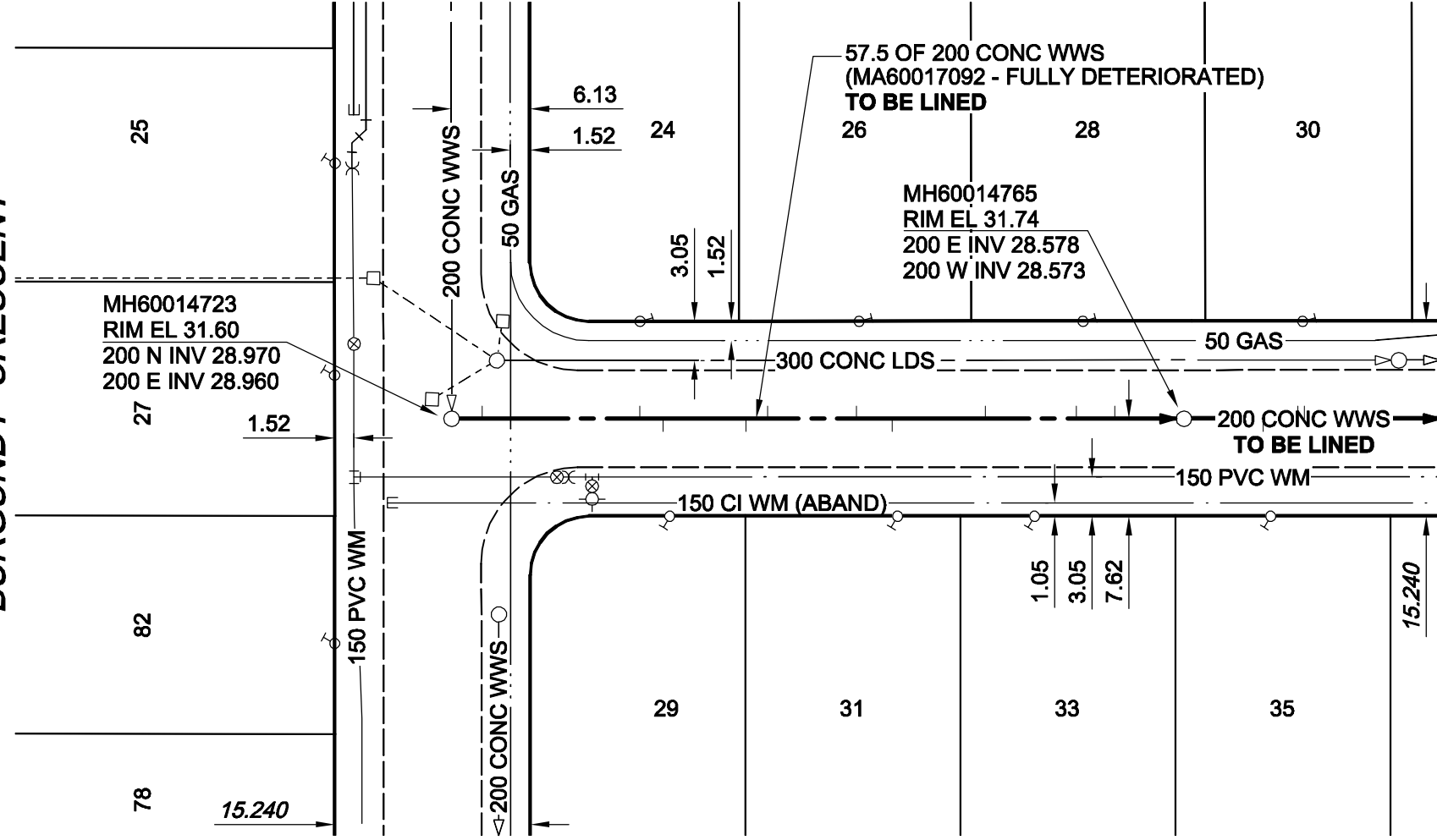
B SIZE 11" x 17" (279mm x 432mm)

PLOT: 7/22/2009 11:45:02 AM

FILE NAME: D265-244-01\_01-C-1047\_RX.dwg Saved By: berarok

### WATERFORD BAY (S LEG)

**BURGUNDY CRESCENT**



FOR FURTHER INFO  
SEE DWG 8985

**SEWER JUNCTION INFORMATION\***

REF. MH	DIST FROM REF. MH	SIZE	CLOCK AT
MH60014723	2.40	150Ø	10
MH60014723	14.70	150Ø	09
MH60014723	16.50	150Ø	02
MH60014723	23.00	150Ø	02
MH60014723	24.70	150Ø	10
MH60014723	31.60	150Ø	11
MH60014723	34.40	150Ø	02
MH60014723	41.70	150Ø	10
MH60014723	48.80	150Ø	10
MH60014723	51.80	150Ø	10

\*JUNCTION INFORMATION FROM VIDEO INSPECTION

### WARNING

IF POWER EQUIPMENT OR EXPLOSIVES ARE TO BE USED FOR EXCAVATION ON THIS PROJECT, THE CONTRACTOR MUST:

- 1) NOTIFY THE GAS COMPANY OF THE PROPOSED LOCATION OF EXCAVATION.
- 2) TAKE PRECAUTION TO AVOID DAMAGE TO GAS COMPANY INSTALLATIONS.

SEE PROVINCIAL REGULATION 140/92 FOR DETAILS

**METRIC**  
WHOLE NUMBERS INDICATE MILLIMETRES  
DECIMALIZED NUMBERS INDICATE METRES

**APEGM**  
 Certificate of Authorization  
 AECOM Canada Ltd.  
 No. 4671    Date: 09/07/21

BID OPPORTUNITY NO. 372-2009

LOCATION APPROVED UNDERGROUND STRUCTURES			
BM 65-003 ELEV 232.439m	Tbft. in W. wall of General Bying School, Beaumont St. @ Waterford Bay, 0.6m N. of S.W. cor. of Bldg.		

SUPR. U/G STRUCTURES COMMITTEE \_\_\_\_\_ DATE \_\_\_\_\_

**NOTE:**  
LOCATION OF UNDERGROUND STRUCTURES AS SHOWN ARE BASED ON THE BEST INFORMATION AVAILABLE. BUT NO GUARANTEE IS GIVEN THAT ALL EXISTING UTILITIES ARE SHOWN OR THAT THE GIVEN LOCATIONS ARE EXACT. CONFIRMATION OF EXISTENCE AND EXACT LOCATION OF ALL SERVICES MUST BE OBTAINED FROM THE INDIVIDUAL UTILITIES BEFORE PROCEEDING WITH CONSTRUCTION.

NO.	REVISIONS	YY/MM/DD	BY
0	ISSUED FOR CONSTRUCTION	09/07/21	KMB

DESIGNED BY		ALD	CHECKED BY		PL
DRAWN BY		KMB	APPROVED BY		BRYAN WEBER
HOR. SCALE		1:500	RELEASED FOR CONSTRUCTION		KZ
VERT. SCALE		N/A	DATE		JULY 21/09

<b>AECOM</b>						<small>© 2009 AECOM Canada Ltd. All Rights Reserved. This document is protected by copyright law and may not be used, reproduced or modified in any manner or for any purpose except with the written permission of AECOM Canada Ltd. ("AECOM") or a party to which its copyright has been assigned. AECOM accepts no responsibility, and denies any liability whatsoever, to any party that uses, reproduces, modifies, or relies on this document without AECOM's express written consent.</small>					
DESIGNED BY	ALD	CHECKED BY	PL	PROFESSIONAL'S SEAL		ISSUED FOR CONSTRUCTION WAS SEALED BY C. C. MACEY AND DATED 09/07/21					
DRAWN BY	KMB	APPROVED BY	BRYAN WEBER	CONSULTANT DRAWING NO.							
HOR. SCALE	1:500	RELEASED FOR CONSTRUCTION		D265-244-01_01-C-1047_RX.dwg							
VERT. SCALE		N/A	DATE		JULY 21/09						

**THE CITY OF WINNIPEG**  
**WATER AND WASTE DEPARTMENT**  
**2009 WASTE WATER SEWER RENEWALS**  
**BY CIPP LINING CONTRACT 16**  
**WATERFORD BAY (S LEG)**  
 BURGUNDY CRESCENT  
 TO 70m W OF BEAUMONT STREET

SHEET 47 OF 52 CITY DRAWING NUMBER <span style="font-size: 2em;"><b>8984</b></span>	REV 0
---	----------