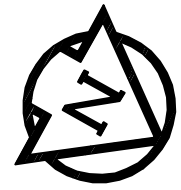
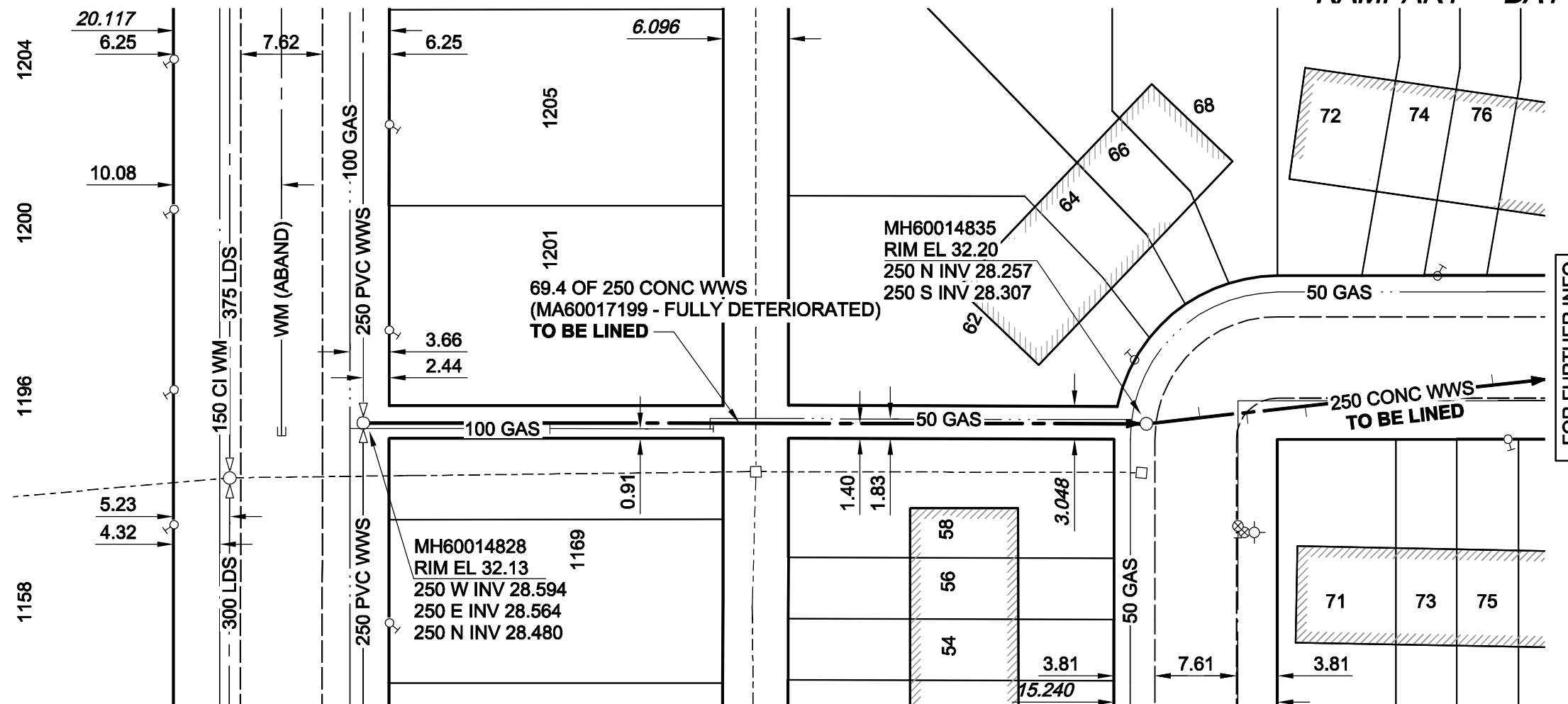


WALLER AVENUE



FOR FURTHER INFO
SEE DWG 8972

SEWER JUNCTION INFORMATION*

REF. MH	DIST FROM REF. MH	SIZE	CLOCK AT
MH6014828	17.40	1500	02

*JUNCTION INFORMATION FROM VIDEO INSPECTION

WARNING

IF POWER EQUIPMENT OR EXPLOSIVES ARE TO BE USED FOR EXCAVATION ON THIS PROJECT, THE CONTRACTOR MUST:
 1) NOTIFY THE GAS COMPANY OF THE PROPOSED LOCATION OF EXCAVATION.
 2) TAKE PRECAUTION TO AVOID DAMAGE TO GAS COMPANY INSTALLATIONS.
 SEE PROVINCIAL REGULATION 140/92 FOR DETAILS

METRIC
 WHOLE NUMBERS INDICATE MILLIMETRES
 DECIMALIZED NUMBERS INDICATE METRES

AECOM
 Certificate of Authorization
 AECOM Canada Ltd.
 No. 4671 Date: 09/07/21

BID OPPORTUNITY NO. 372-2009

AECOM REVIEW DRAFT CHK WJd

LOCATION APPROVED UNDERGROUND STRUCTURES

SUPR. U/G STRUCTURES COMMITTEE	DATE

NOTE:
 LOCATION OF UNDERGROUND STRUCTURES AS SHOWN ARE BASED ON THE BEST INFORMATION AVAILABLE. BUT NO GUARANTEE IS GIVEN THAT ALL EXISTING UTILITIES ARE SHOWN OR THAT THE GIVEN LOCATIONS ARE EXACT. CONFIRMATION OF EXISTENCE AND EXACT LOCATION OF ALL SERVICES MUST BE OBTAINED FROM THE INDIVIDUAL UTILITIES BEFORE PROCEEDING WITH CONSTRUCTION.

NO.	REVISIONS	YY/MM/DD	BY
0	ISSUED FOR CONSTRUCTION	09/07/21	KMB

AECOM

© 2009 AECOM Canada Ltd. All Rights Reserved. This document is protected by copyright law and may not be used, reproduced or modified in any manner or for any purpose except with the written permission of AECOM Canada Ltd. ("AECOM") or a party to which its copyright has been assigned. AECOM accepts no responsibility, and denies any liability whatsoever, to any party that uses, reproduces, modifies, or relies on this document without AECOM's express written consent.

DESIGNED BY	ALD	CHECKED BY	PL
DRAWN BY	KMB	APPROVED BY	BRYAN WEBER
HOR. SCALE	1:500	RELEASED FOR CONSTRUCTION	KZ
VERT. SCALE	N/A	DATE	JULY 21/09
DATE	09/07/21	DATE	JULY 21/09

PROFESSIONAL'S SEAL
 ISSUED FOR CONSTRUCTION WAS SEALED BY
 C. C. MACEY AND DATED 09/07/21
 CONSULTANT DRAWING NO. D265-244-01_01-C-1034_RX.dwg

THE CITY OF WINNIPEG WATER AND WASTE DEPARTMENT

2009 WASTE WATER SEWER RENEWALS BY CIPP LINING CONTRACT 16

ROW BETWEEN WALLER AVENUE AND RAMPART BAY WALLER AVENUE TO RAMPART BAY (S LEG)

SHEET 34 OF 52
 CITY DRAWING NUMBER 8971
 REV 0