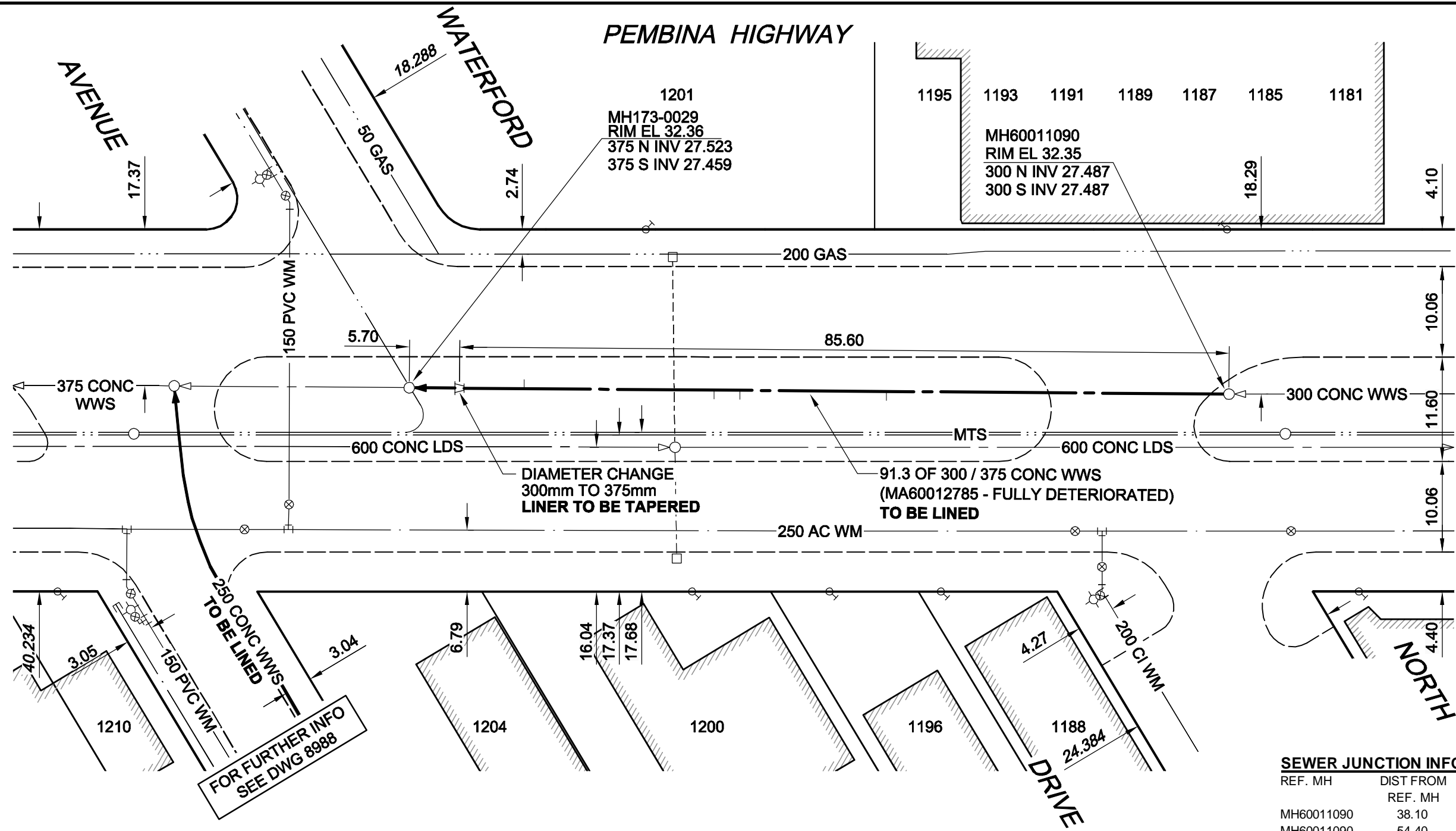
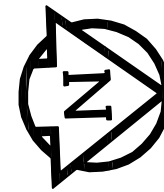


B SIZE 11" x 17" (279mm x 432mm)

PLOT: 7/22/2009 11:04:49 AM

FILE NAME: D265-244-01\_01-C-1033\_RX.dwg Saved By: berarok



FOR FURTHER INFO SEE DWG 8988

**SEWER JUNCTION INFORMATION\***

REF. MH	DIST FROM REF. MH	SIZE	CLOCK AT
MH60011090	38.10	150Ø	10
MH60011090	54.40	150Ø	10
MH60011090	57.30	150Ø	11
MH60011090	78.40	150Ø	01

\*JUNCTION INFORMATION FROM VIDEO INSPECTION

**METRIC**  
WHOLE NUMBERS INDICATE MILLIMETRES  
DECIMALIZED NUMBERS INDICATE METRES

**APEGM**  
Certificate of Authorization  
AECOM Canada Ltd.  
No. 4671 Date: 09/07/21

BID OPPORTUNITY NO. 372-2009

WJd	<b>LOCATION APPROVED</b>
DRFT CHK	<b>UNDERGROUND STRUCTURES</b>
AECOM REVIEW	SUPR. U/G STRUCTURES DATE COMMITTEE
	<b>NOTE:</b> LOCATION OF UNDERGROUND STRUCTURES AS SHOWN ARE BASED ON THE BEST INFORMATION AVAILABLE. BUT NO GUARANTEE IS GIVEN THAT ALL EXISTING UTILITIES ARE SHOWN OR THAT THE GIVEN LOCATIONS ARE EXACT. CONFIRMATION OF EXISTENCE AND EXACT LOCATION OF ALL SERVICES MUST BE OBTAINED FROM THE INDIVIDUAL UTILITIES BEFORE PROCEEDING WITH CONSTRUCTION.

BM 64-001 ELEV 232.527m	Tbit. In W. Conc. foundation of the Kito Bldg., No. 1200 Pembina Hwy., 0.6m S. of N.W. Cor. of Bldg.		
0	ISSUED FOR CONSTRUCTION	09/07/21	KMB
NO.	REVISIONS	YY/MM/DD	BY

<b>AECOM</b>			
DESIGNED BY	ALD	CHECKED BY	PL
DRAWN BY	KMB	APPROVED BY	BRYAN WEBER
HOR. SCALE	1:500	RELEASED FOR CONSTRUCTION	KZ
VERT. SCALE	N/A	DATE	JULY 21/09
DATE	09/07/21	DATE	JULY 21/09

PROFESSIONAL'S SEAL  
ISSUED FOR CONSTRUCTION WAS SEALED BY  
C. C. MACEY AND DATED 09/07/21  
CONSULTANT DRAWING NO.  
D265-244-01\_01-C-1033\_RX.dwg

**THE CITY OF WINNIPEG**  
WATER AND WASTE DEPARTMENT

**2009 WASTE WATER SEWER RENEWALS**  
BY CIPP LINING  
CONTRACT 16  
PEMBINA HIGHWAY  
WATERFORD AVENUE TO NORTH DRIVE

SHEET 33 OF 52  
CITY DRAWING NUMBER  
**8970**  
REV 0