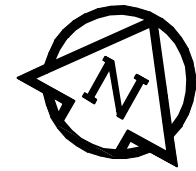


B SIZE 11" x 17" (279mm x 432mm)

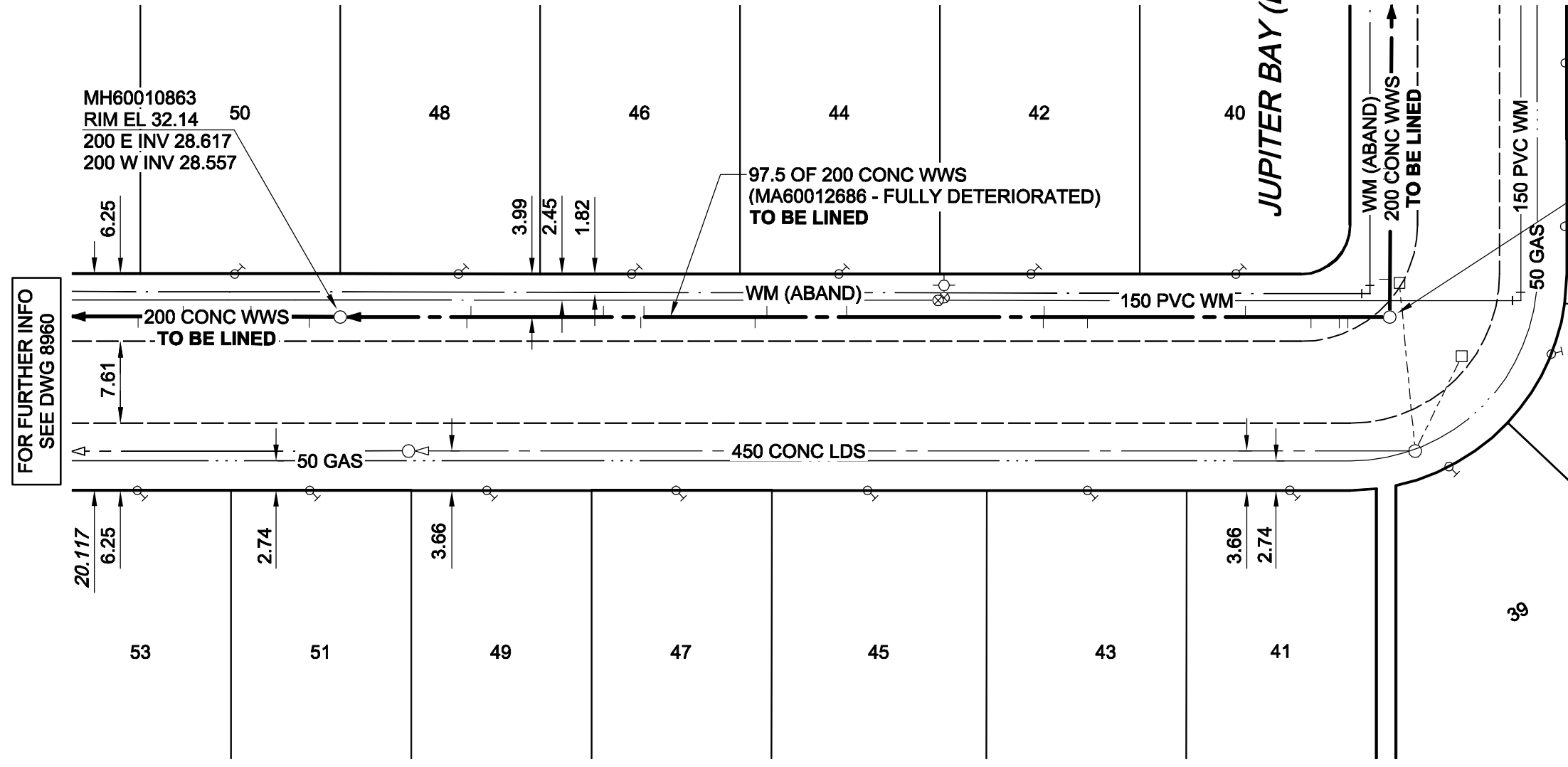
PLOT: 7/22/2009 10:45:22 AM

FILE NAME: D265-244-01_01-C-1024_RX.dwg Saved By: berarok



JUPITER BAY (S LEG)

JUPITER BAY (E LEG)



FOR FURTHER INFO
SEE DWG 8960

FOR FURTHER INFO
SEE DWG 8962

SEWER JUNCTION INFORMATION*

REF. MH	DIST FROM REF. MH	SIZE	CLOCK AT
MH60010858	3.90	100Ø	10
MH60010858	4.70	100Ø	10
MH60010858	7.30	150Ø	10
MH60010858	13.40	150Ø	02
MH60010858	28.10	150Ø	10
MH60010858	32.10	100Ø	02
MH60010858	32.20	100Ø	10
MH60010858	50.50	100Ø	02
MH60010858	57.90	100Ø	02
MH60010858	59.00	100Ø	11
MH60010858	69.30	100Ø	02
MH60010858	69.60	100Ø	10
MH60010858	73.10	150Ø	01
MH60010858	85.40	150Ø	03
MH60010858	85.80	150Ø	10

*JUNCTION INFORMATION FROM VIDEO INSPECTION

WARNING

IF POWER EQUIPMENT OR EXPLOSIVES ARE TO BE USED FOR EXCAVATION ON THIS PROJECT, THE CONTRACTOR MUST:
 1) NOTIFY THE GAS COMPANY OF THE PROPOSED LOCATION OF EXCAVATION.
 2) TAKE PRECAUTION TO AVOID DAMAGE TO GAS COMPANY INSTALLATIONS.
 SEE PROVINCIAL REGULATION 140/92 FOR DETAILS

METRIC
 WHOLE NUMBERS INDICATE MILLIMETRES
 DECIMALIZED NUMBERS INDICATE METRES

AECOM
 Certificate of Authorization
 AECOM Canada Ltd.
 No. 4671 Date: 09/07/21

BID OPPORTUNITY NO. 372-2009

AECOM REVIEW DRAFT CHK WJd

LOCATION APPROVED UNDERGROUND STRUCTURES

SUPR. U/G STRUCTURES DATE COMMITTEE

NOTE:
 LOCATION OF UNDERGROUND STRUCTURES AS SHOWN ARE BASED ON THE BEST INFORMATION AVAILABLE. BUT NO GUARANTEE IS GIVEN THAT ALL EXISTING UTILITIES ARE SHOWN OR THAT THE GIVEN LOCATIONS ARE EXACT. CONFIRMATION OF EXISTENCE AND EXACT LOCATION OF ALL SERVICES MUST BE OBTAINED FROM THE INDIVIDUAL UTILITIES BEFORE PROCEEDING WITH CONSTRUCTION.

BM 65-015 ELEV 232.691m	N. side Somerville Ave., E. of Planet St., Tbt. in E. Conc. foundation of No. 1431 Somerville Ave., 1.0m N. & 0.3m below stucco of S.E. Cor. of house.		
0	ISSUED FOR CONSTRUCTION	09/07/21	KMB
NO.	REVISIONS	YY/MM/DD	BY

AECOM

© 2009 AECOM Canada Ltd. All Rights Reserved. This document is protected by copyright law and may not be used, reproduced or modified in any manner or for any purpose except with the written permission of AECOM Canada Ltd. ("AECOM") or a party to which its copyright has been assigned. AECOM accepts no responsibility, and denies any liability whatsoever, to any party that uses, reproduces, modifies, or relies on this document without AECOM's express written consent.

DESIGNED BY	ALD	CHECKED BY	PL
DRAWN BY	KMB	APPROVED BY	BRYAN WEBER
HOR. SCALE	1:500	RELEASED FOR CONSTRUCTION	KZ
VERT. SCALE	N/A		
DATE	09/07/21	DATE	JULY 21/09

PROFESSIONAL'S SEAL

ISSUED FOR CONSTRUCTION WAS SEALED BY
 C. C. MACEY AND DATED
 09/07/21

CONSULTANT DRAWING NO.
 D265-244-01_01-C-1024_RX.dwg

THE CITY OF WINNIPEG WATER AND WASTE DEPARTMENT

2009 WASTE WATER SEWER RENEWALS BY CIPP LINING CONTRACT 16

JUPITER BAY (S LEG)
 69m E OF PLANET STREET
 TO 25m W OF JUPITER BAY (E LEG)

SHEET 24 OF 52
 CITY DRAWING NUMBER
8961 REV 0