

A1 SIZE 23.8" x 33.1" (594mm x 841mm)

PLOT: 08/07/14 9:18:29 AM

PROJECT: AECMA FILE NAME: 0854-11-00_02-CTF02_BX.dwg Saved By: cpop

LEGEND

- STAGE 1 WORKS
- TEMPORARY ASPHALT
- TRAFFIC FLOW

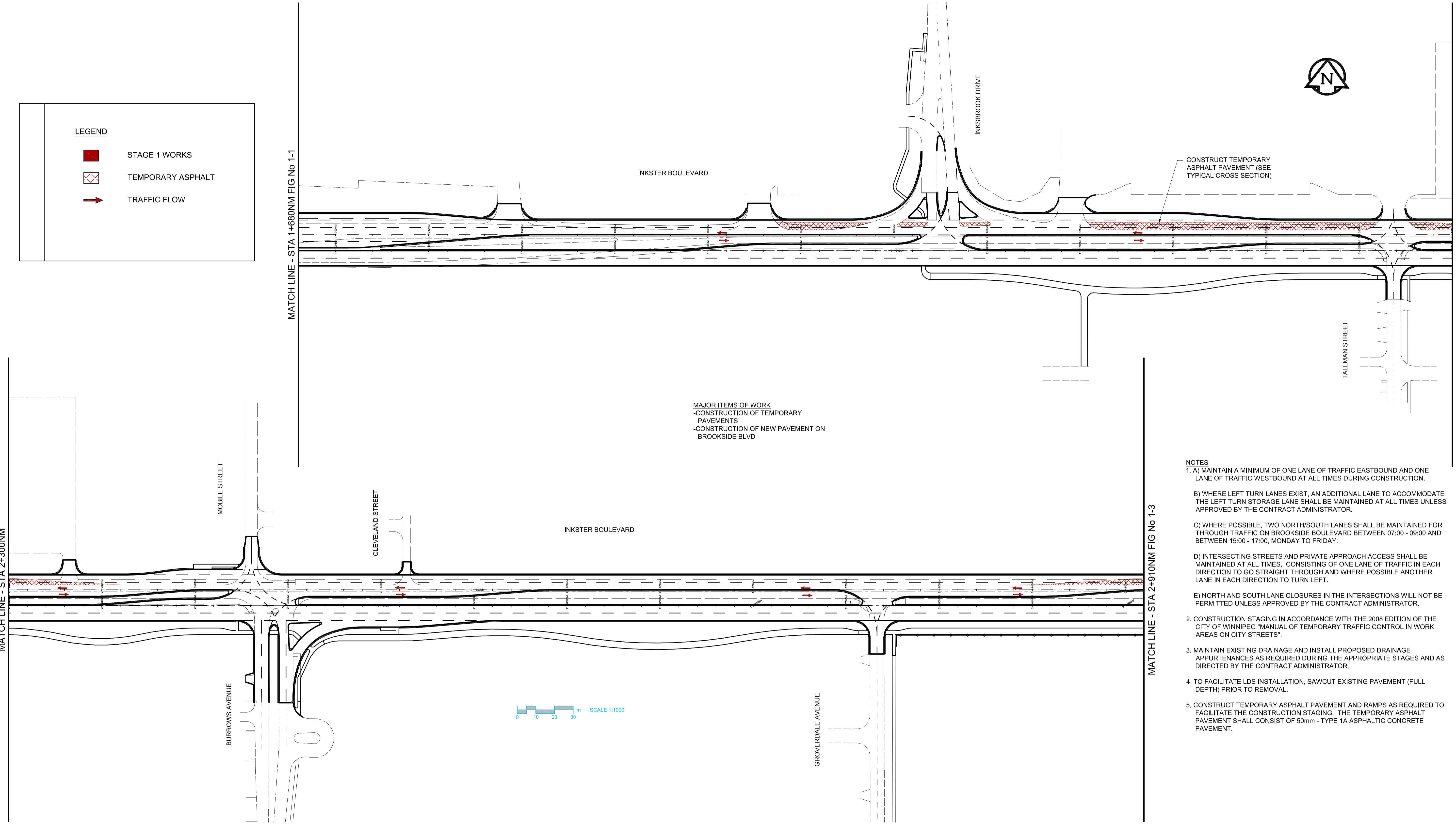


MATCH LINE - STA 1+680NM FIG No 1-1

MATCH LINE - STA 2+300NM

MATCH LINE - STA 2+300NM

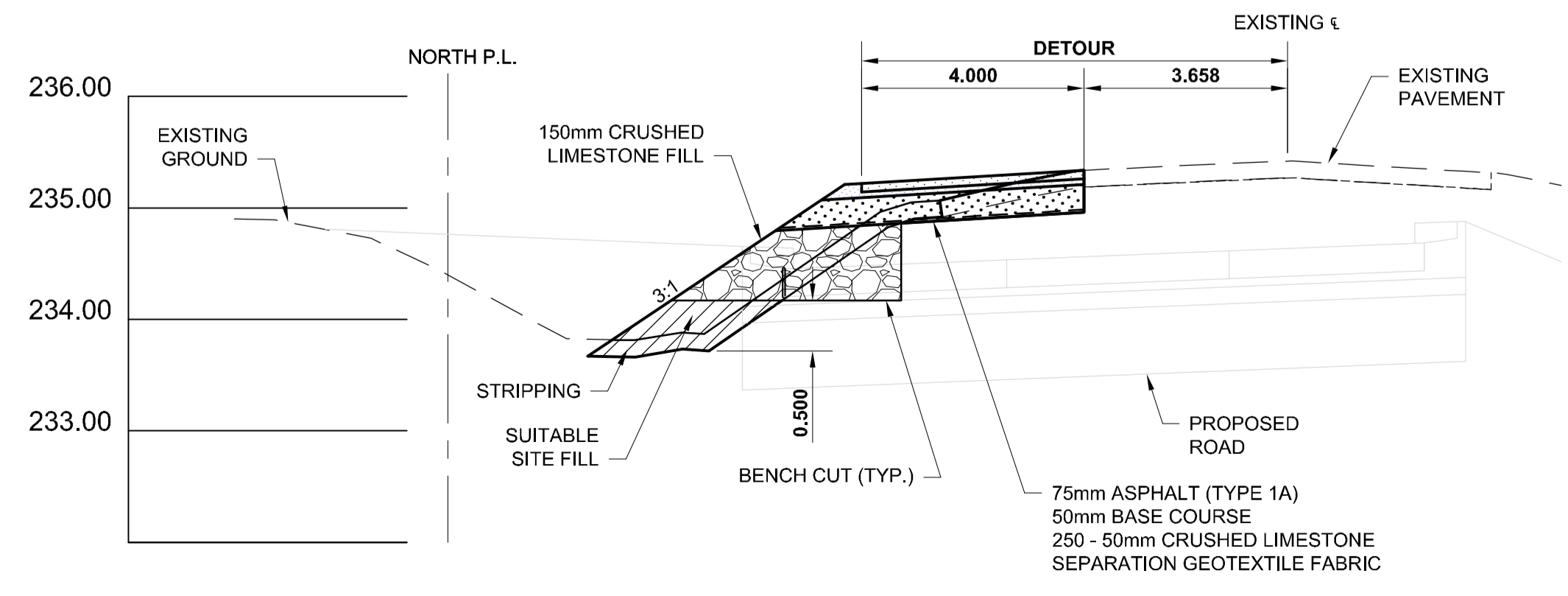
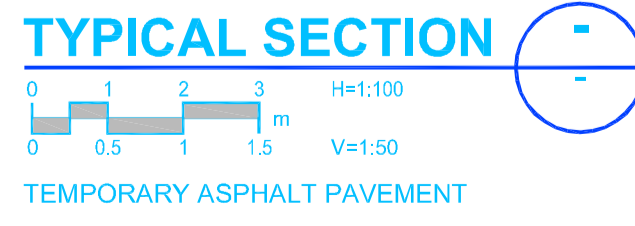
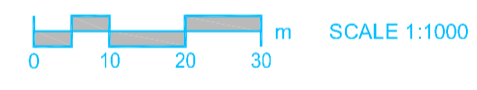
MATCH LINE - STA 2+910NM FIG No 1-3



MAJOR ITEMS OF WORK
 -CONSTRUCTION OF TEMPORARY PAVEMENTS
 -CONSTRUCTION OF NEW PAVEMENT ON BROOKSIDE BLVD

NOTES

1. A) MAINTAIN A MINIMUM OF ONE LANE OF TRAFFIC EASTBOUND AND ONE LANE OF TRAFFIC WESTBOUND AT ALL TIMES DURING CONSTRUCTION.
- B) WHERE LEFT TURN LANES EXIST, AN ADDITIONAL LANE TO ACCOMMODATE THE LEFT TURN STORAGE LANE SHALL BE MAINTAINED AT ALL TIMES UNLESS APPROVED BY THE CONTRACT ADMINISTRATOR.
- C) WHERE POSSIBLE, TWO NORTH/SOUTH LANES SHALL BE MAINTAINED FOR THROUGH TRAFFIC ON BROOKSIDE BOULEVARD BETWEEN 07:00 - 09:00 AND BETWEEN 15:00 - 17:00, MONDAY TO FRIDAY.
- D) INTERSECTING STREETS AND PRIVATE APPROACH ACCESS SHALL BE MAINTAINED AT ALL TIMES, CONSISTING OF ONE LANE OF TRAFFIC IN EACH DIRECTION TO GO STRAIGHT THROUGH AND WHERE POSSIBLE ANOTHER LANE IN EACH DIRECTION TO TURN LEFT.
- E) NORTH AND SOUTH LANE CLOSURES IN THE INTERSECTIONS WILL NOT BE PERMITTED UNLESS APPROVED BY THE CONTRACT ADMINISTRATOR.
2. CONSTRUCTION STAGING IN ACCORDANCE WITH THE 2008 EDITION OF THE CITY OF WINNIPEG "MANUAL OF TEMPORARY TRAFFIC CONTROL IN WORK AREAS ON CITY STREETS".
3. MAINTAIN EXISTING DRAINAGE AND INSTALL PROPOSED DRAINAGE APPURTENANCES AS REQUIRED DURING THE APPROPRIATE STAGES AND AS DIRECTED BY THE CONTRACT ADMINISTRATOR.
4. TO FACILITATE LDS INSTALLATION, SAWCUT EXISTING PAVEMENT (FULL DEPTH) PRIOR TO REMOVAL.
5. CONSTRUCT TEMPORARY ASPHALT PAVEMENT AND RAMPS AS REQUIRED TO FACILITATE THE CONSTRUCTION STAGING. THE TEMPORARY ASPHALT PAVEMENT SHALL CONSIST OF 50mm - TYPE 1A ASPHALTIC CONCRETE PAVEMENT.



CITY OF WINNIPEG
 430m WEST OF OAK POINT HIGHWAY
 TO KEEWATIN STREET
INKSTER BOULEVARD WIDENING PROJECT
STAGE 1
Figure 1-2