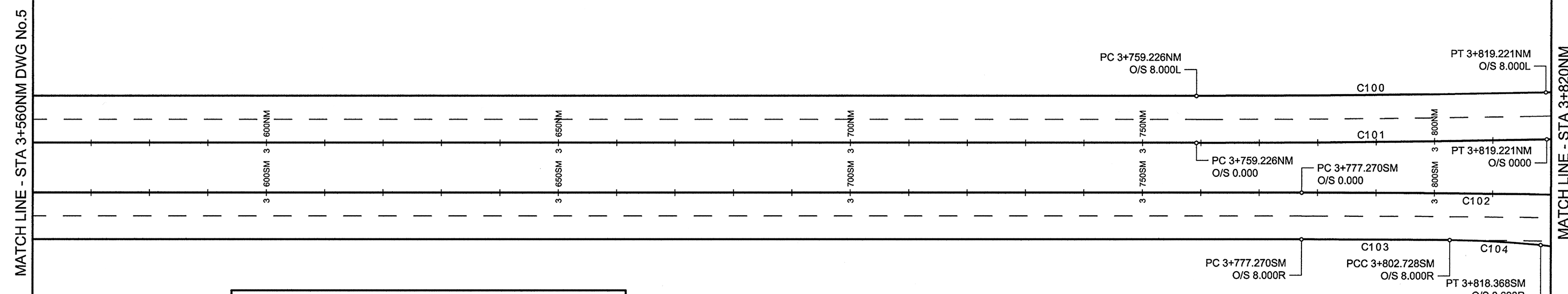


INKSTER BOULEVARD NORTH MEDIAN CONTROL POINT COORDINATES		
POINT/STATION	NORTHING	EASTING
PC 3+759.226NM	10047.748	11369.217
PT 3+819.221NM	10049.752	11429.178



**INKSTER BOULEVARD**

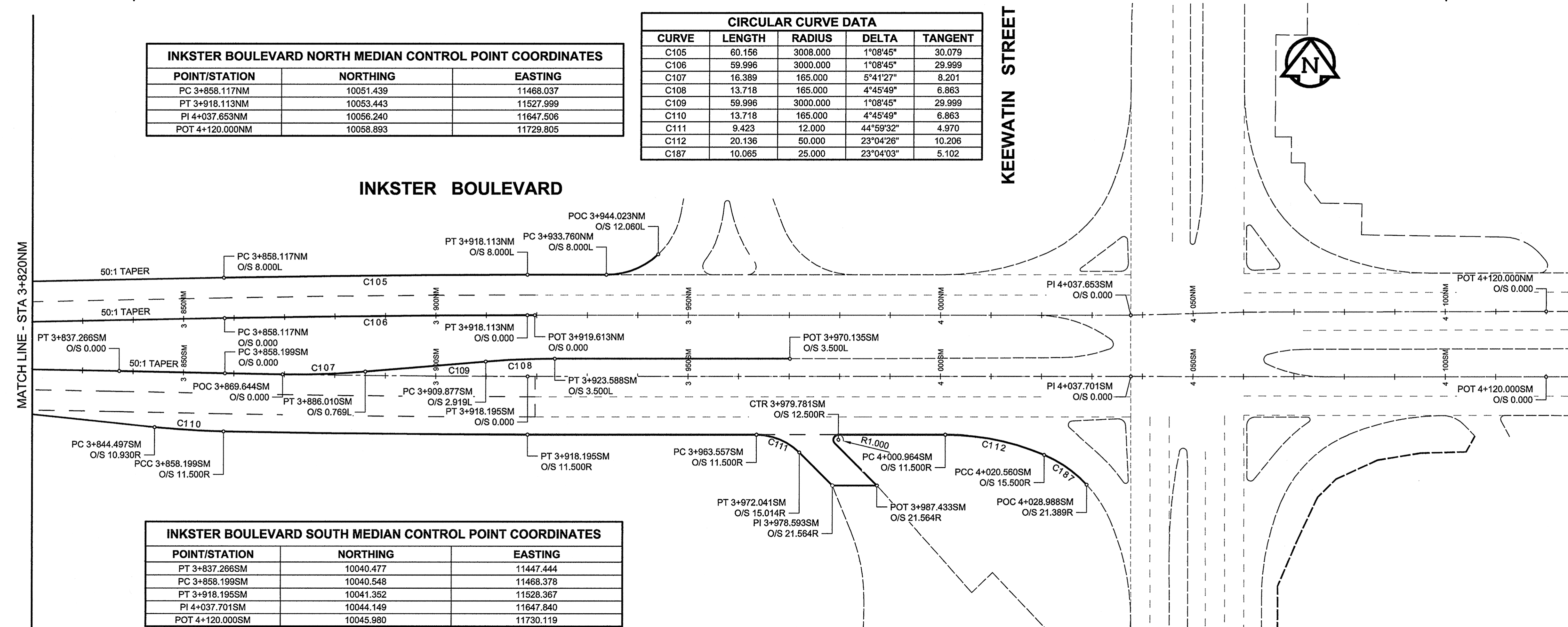


CIRCULAR CURVE DATA				
CURVE	LENGTH	RADIUS	DELTA	TANGENT
C100	59.836	2992.000	1°08'45"	29.919
C101	59.996	3000.000	1°08'45"	29.999
C102	59.996	3000.000	1°08'45"	29.999
C103	25.391	2992.000	0°29'10"	12.695
C104	15.618	165.000	5°25'24"	7.815

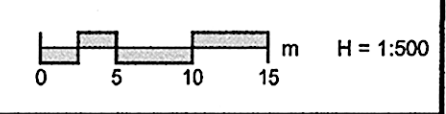
INKSTER BOULEVARD SOUTH MEDIAN CONTROL POINT COORDINATES		
POINT/STATION	NORTHING	EASTING
PC 3+777.270SM	10039.673	11387.455

INKSTER BOULEVARD NORTH MEDIAN CONTROL POINT COORDINATES		
POINT/STATION	NORTHING	EASTING
PC 3+858.117NM	10051.439	11468.037
PT 3+918.113NM	10053.443	11527.999
PI 4+037.653NM	10056.240	11647.506
POT 4+120.000NM	10058.893	11729.805

CIRCULAR CURVE DATA				
CURVE	LENGTH	RADIUS	DELTA	TANGENT
C105	60.156	3008.000	1°08'45"	30.079
C106	59.996	3000.000	1°08'45"	29.999
C107	16.389	165.000	5°41'27"	8.201
C108	13.718	165.000	4°45'49"	6.863
C109	59.996	3000.000	1°08'45"	29.999
C110	13.718	165.000	4°45'49"	6.863
C111	9.423	12.000	44°59'32"	4.970
C112	20.136	50.000	23°04'26"	10.206
C187	10.065	25.000	23°04'03"	5.102



INKSTER BOULEVARD SOUTH MEDIAN CONTROL POINT COORDINATES		
POINT/STATION	NORTHING	EASTING
PT 3+837.266SM	10040.477	11447.444
PC 3+858.199SM	10040.548	11468.378
PT 3+918.195SM	10041.352	11528.367
PI 4+037.701SM	10044.149	11647.840
POT 4+120.000SM	10045.980	11730.119



**AECOM**  
 Certificate of Authorization  
 AECOM Canada Ltd.  
 No. 4671 Date: July 15/10  
 BID OPPORTUNITY NO. 368-2009

**LOCATION APPROVED UNDERGROUND STRUCTURES**

SUPR. U/G STRUCTURES DATE COMMITTEE

**NOTE:** LOCATION OF UNDERGROUND STRUCTURES AS SHOWN ARE BASED ON THE BEST INFORMATION AVAILABLE. BUT NO GUARANTEE IS GIVEN THAT ALL EXISTING UTILITIES ARE SHOWN OR THAT THE GIVEN LOCATIONS ARE EXACT. CONFIRMATION OF EXISTENCE AND EXACT LOCATION OF ALL SERVICES MUST BE OBTAINED FROM THE INDIVIDUAL UTILITIES BEFORE PROCEEDING WITH CONSTRUCTION.

NO.	REVISIONS	DATE	BY
0	ISSUED FOR CONSTRUCTION	09/07/15	DID

<b>AECOM</b>	
DESIGNED BY: WRJ	CHECKED BY: RPB
DRAWN BY: DID	APPROVED BY: TGS
HOR. SCALE: 1:500	RELEASED FOR CONSTRUCTION
VERT. SCALE: N/A	DATE: July 15, 2010

PROFESSIONAL'S SEAL  
 PROVINCE OF MANITOBA  
 R. P. BRUCE  
 REGISTERED PROFESSIONAL ENGINEER  
 CONSULTANT DRAWING NO. 0285-411-00\_03-CT1006\_RX.dwg

**THE CITY OF WINNIPEG**  
 PUBLIC WORKS DEPARTMENT  
 ENGINEERING DIVISION

**INKSTER BOULEVARD WIDENING PROJECT**  
 BROOKSIDE BOULEVARD TO KEEWATIN STREET  
 HORIZONTAL GEOMETRY  
 STA 3+560NM TO KEEWATIN STREET

CITY DRAWING NUMBER: P-3301-6	REV: 0
SHEET: 6 OF 31	
DRAWING NO. 6	

**METRIC**  
 WHOLE NUMBERS INDICATE MILLIMETRES  
 DECIMALIZED NUMBERS INDICATE METRES