

CIRCULAR CURVE DATA				
CURVE	LENGTH	RADIUS	DELTA	TANGENT
C78	19.627	12.500	89°57'50"	12.492
C79	2.513	22.500	6°23'56"	1.258
C80	3.077	31.000	5°41'14"	1.540
C81	13.718	50.000	15°43'10"	6.902
C82	19.753	25.000	45°16'13"	10.425
C83	20.136	50.000	23°04'26"	10.206
C84	13.718	165.000	4°45'49"	6.863
C85	13.718	165.000	4°45'49"	6.863
C86	6.714	25.000	15°23'17"	3.378
C87	2.555	22.500	6°30'24"	1.279
C88	2.681	22.500	6°49'38"	1.342

**INKSTER BOULEVARD**

CIRCULAR CURVE DATA				
CURVE	LENGTH	RADIUS	DELTA	TANGENT
C89	6.520	22.500	16°36'09"	3.283
C90	20.136	50.000	23°04'26"	10.206
C91	19.040	25.000	43°38'13"	10.009
C92	20.136	50.000	23°04'26"	10.206
C93	2.941	31.000	5°26'09"	1.472
C94	5.697	22.500	14°30'30"	2.864
C95	4.344	25.000	9°57'17"	2.177
C96	14.217	100.000	8°08'45"	7.121
C97	14.217	100.000	8°08'45"	7.121

CIRCULAR CURVE DATA				
CURVE	LENGTH	RADIUS	DELTA	TANGENT
C98	13.718	165.000	4°45'49"	6.863
C99	13.718	165.000	4°45'49"	6.863

LOCATION APPROVED UNDERGROUND STRUCTURES	
SUPR. U/G STRUCTURES	DATE
COMMITTEE	
NOTE: LOCATION OF UNDERGROUND STRUCTURES AS SHOWN ARE BASED ON THE BEST INFORMATION AVAILABLE. BUT NO GUARANTEE IS GIVEN THAT ALL EXISTING UTILITIES ARE SHOWN OR THAT THE GIVEN LOCATIONS ARE EXACT. CONFIRMATION OF EXISTENCE AND EXACT LOCATION OF ALL SERVICES MUST BE OBTAINED FROM THE INDIVIDUAL UTILITIES BEFORE PROCEEDING WITH CONSTRUCTION.	

**METRIC**  
WHOLE NUMBERS INDICATE MILLIMETRES  
DECIMALIZED NUMBERS INDICATE METRES

NO.	REVISIONS	DATE	BY
0	ISSUED FOR CONSTRUCTION	09/07/15	DID

<b>AECOM</b>	
DESIGNED BY: WRJ	CHECKED BY: RPB
DRAWN BY: DID	APPROVED BY: TGS
HOR. SCALE: 1:500	RELEASED FOR CONSTRUCTION
VERT. SCALE: N/A	DATE: July 15, 2019

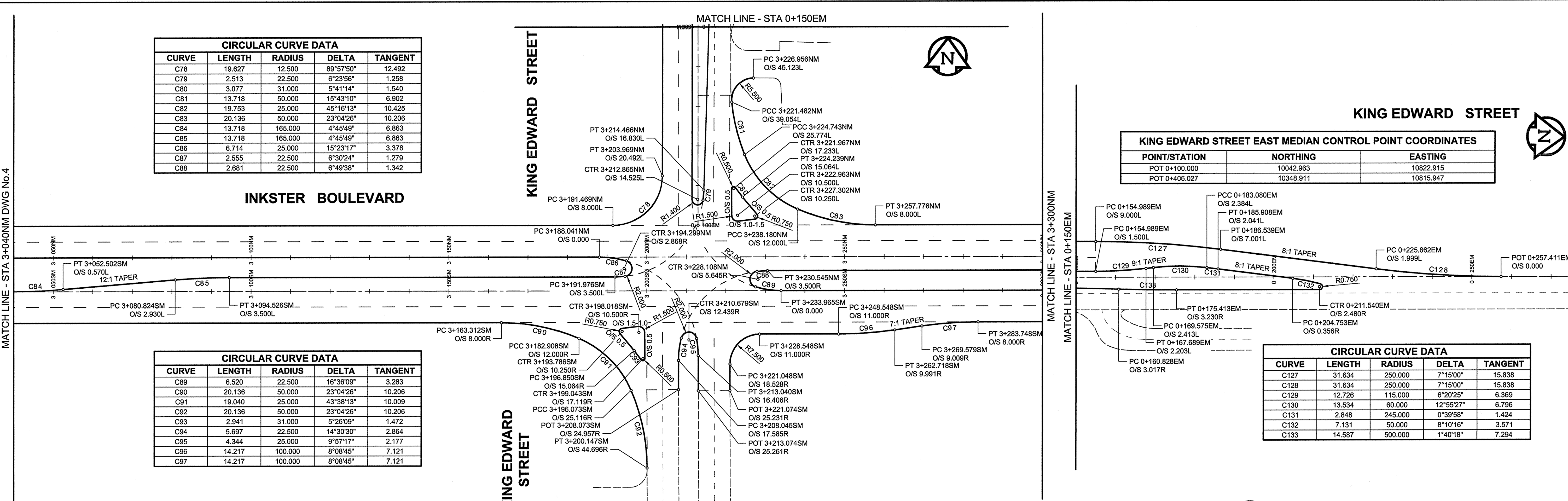
PROFESSIONAL'S SEAL  
PROVINCE OF MANITOBA  
REGISTERED PROFESSIONAL ENGINEER  
R. P. BRUCE  
CONSULTANT DRAWING NO.  
0265-411-00\_03-CT1005\_RX.dwg

**THE CITY OF WINNIPEG**  
PUBLIC WORKS DEPARTMENT  
ENGINEERING DIVISION

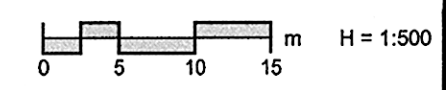
**INKSTER BOULEVARD WIDENING PROJECT**  
BROOKSIDE BOULEVARD TO KEEWATIN STREET  
HORIZONTAL GEOMETRY

CITY DRAWING NUMBER: P-3301-5  
SHEET 5 OF 31  
DRAWING No. 5 REV 0

BID OPPORTUNITY NO. 368-2009



CIRCULAR CURVE DATA				
CURVE	LENGTH	RADIUS	DELTA	TANGENT
C127	31.634	250.000	7°15'00"	15.838
C128	31.634	250.000	7°15'00"	15.838
C129	12.726	115.000	6°20'25"	6.369
C130	13.534	60.000	12°55'27"	6.796
C131	2.848	245.000	0°39'58"	1.424
C132	7.131	50.000	8°10'16"	3.571
C133	14.587	500.000	1°40'18"	7.294



**AECOM**  
Certificate of Authorization  
AECOM Canada Ltd.  
No. 4671 Date: July 15, 2019