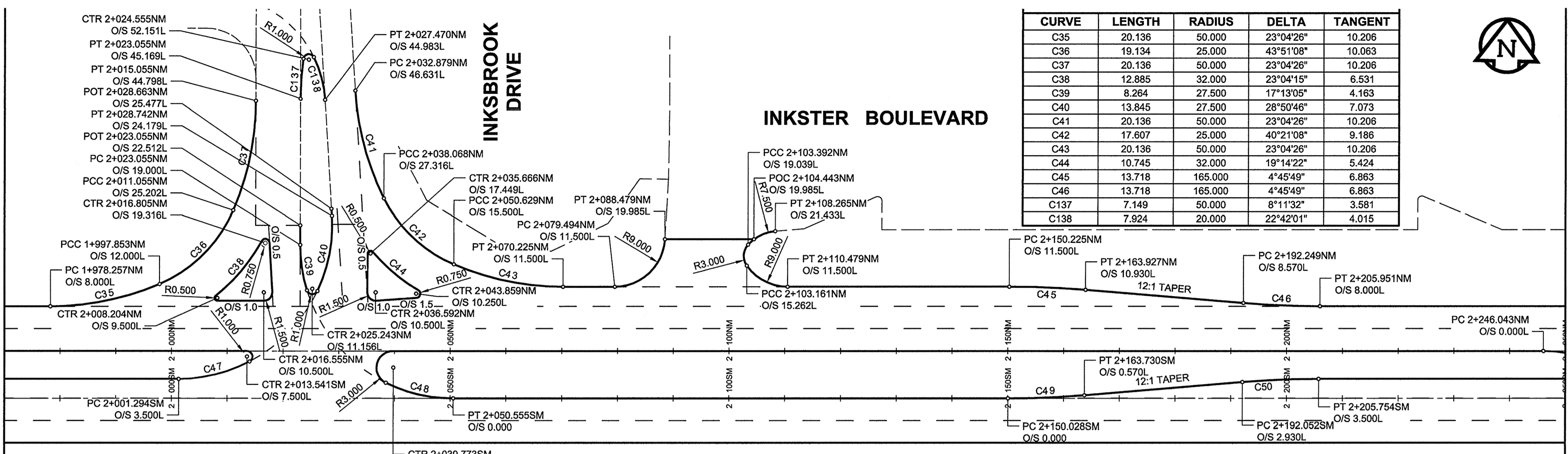
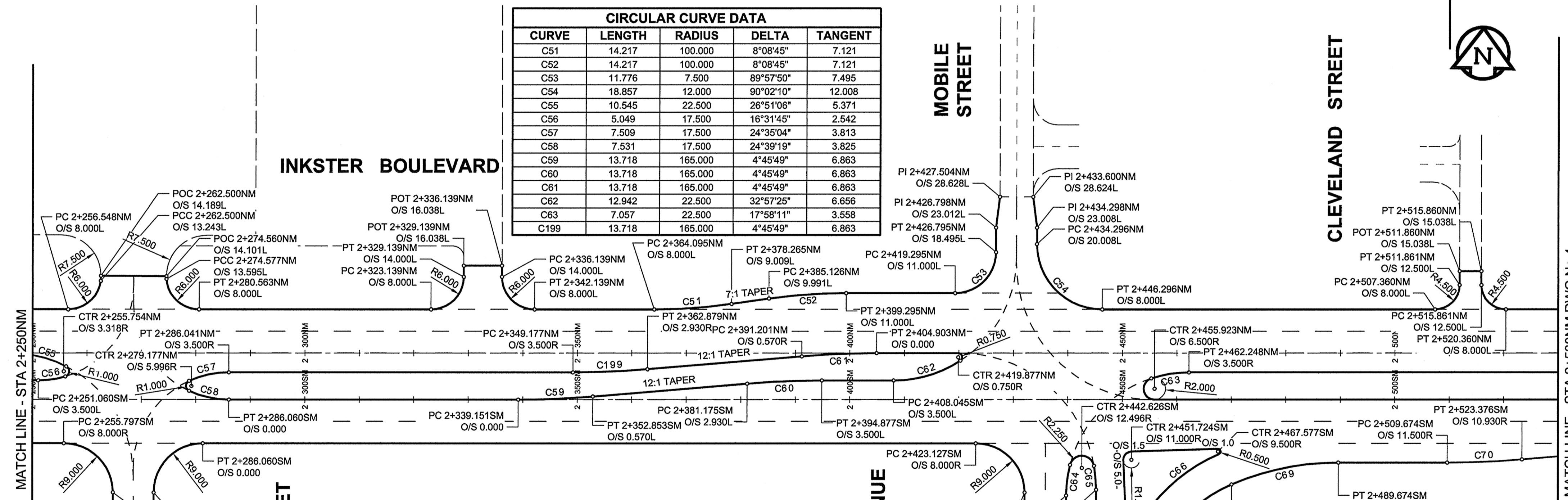


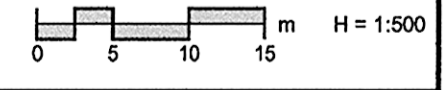
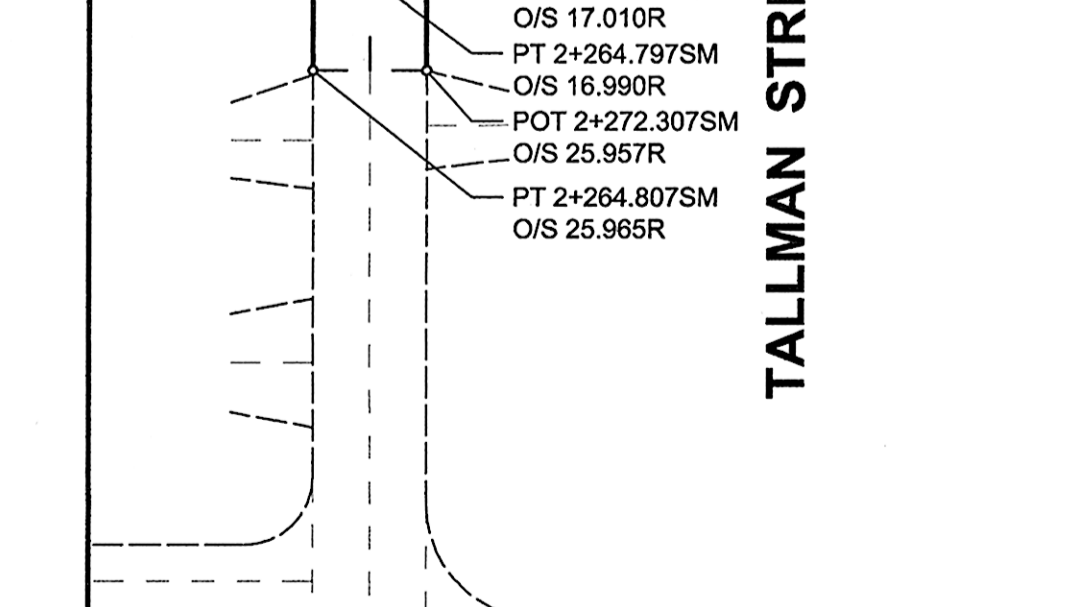
MATCH LINE - STA 1+970NM DWG No.2



CURVE	LENGTH	RADIUS	DELTA	TANGENT
C47	13.212	27.500	27°31'38"	6.736
C48	12.531	27.500	26°06'32"	6.376
C49	13.718	165.000	4°45'49"	6.863
C50	13.718	165.000	4°45'49"	6.863



CURVE	LENGTH	RADIUS	DELTA	TANGENT
C64	5.644	22.500	14°22'16"	2.837
C65	4.394	25.000	10°04'13"	2.203
C66	15.417	31.000	28°29'40"	7.871
C67	20.136	50.000	23°04'26"	10.206
C68	19.163	25.000	43°55'04"	10.080
C69	20.136	50.000	23°04'26"	10.206
C70	13.718	165.000	4°45'49"	6.863
C186	10.000	9.000	63°39'41"	5.587



AECOM
 Certificate of Authorization
 AECOM Canada Ltd.
 No. 4671 Date: July 15, 2009

BID OPPORTUNITY NO. 368-2009

LOCATION APPROVED
 UNDERGROUND STRUCTURES

SUPR. U/G STRUCTURES DATE COMMITTEE

NOTE:
 LOCATION OF UNDERGROUND STRUCTURES AS SHOWN ARE BASED ON THE BEST INFORMATION AVAILABLE. BUT NO GUARANTEE IS GIVEN THAT ALL EXISTING UTILITIES ARE SHOWN OR THAT THE GIVEN LOCATIONS ARE EXACT. CONFIRMATION OF EXISTENCE AND EXACT LOCATION OF ALL SERVICES MUST BE OBTAINED FROM THE INDIVIDUAL UTILITIES BEFORE PROCEEDING WITH CONSTRUCTION.

NO.	REVISIONS	DATE	BY
0	ISSUED FOR CONSTRUCTION	09/07/15	DID
		YYMMDD	

AECOM

DESIGNED BY: WRJ
 DRAWN BY: DID
 HOR. SCALE: 1:500
 VERT. SCALE: N/A

CHECKED BY: RPB
 APPROVED BY: TGS
 RELEASED FOR CONSTRUCTION: [Signature]
 DATE: July 15, 2009

PROFESSIONAL'S SEAL
 PROVINCE OF MANITOBA
 R. P. BRUCE
 REGISTERED PROFESSIONAL ENGINEER
 CONSULTANT DRAWING NO. 0265-411-00_03-CT1003_RX.dwg

THE CITY OF WINNIPEG
 PUBLIC WORKS DEPARTMENT
 ENGINEERING DIVISION

INKSTER BOULEVARD WIDENING PROJECT
 BROOKSIDE BOULEVARD TO KEEWATIN STREET
 HORIZONTAL GEOMETRY
 STA 1+970NM TO STA 2+530NM

CITY DRAWING NUMBER: P-3301-3
 SHEET: 3 OF 31
 DRAWING No. 3 REV 0

METRIC
 WHOLE NUMBERS INDICATE MILLIMETRES
 DECIMALIZED NUMBERS INDICATE METRES