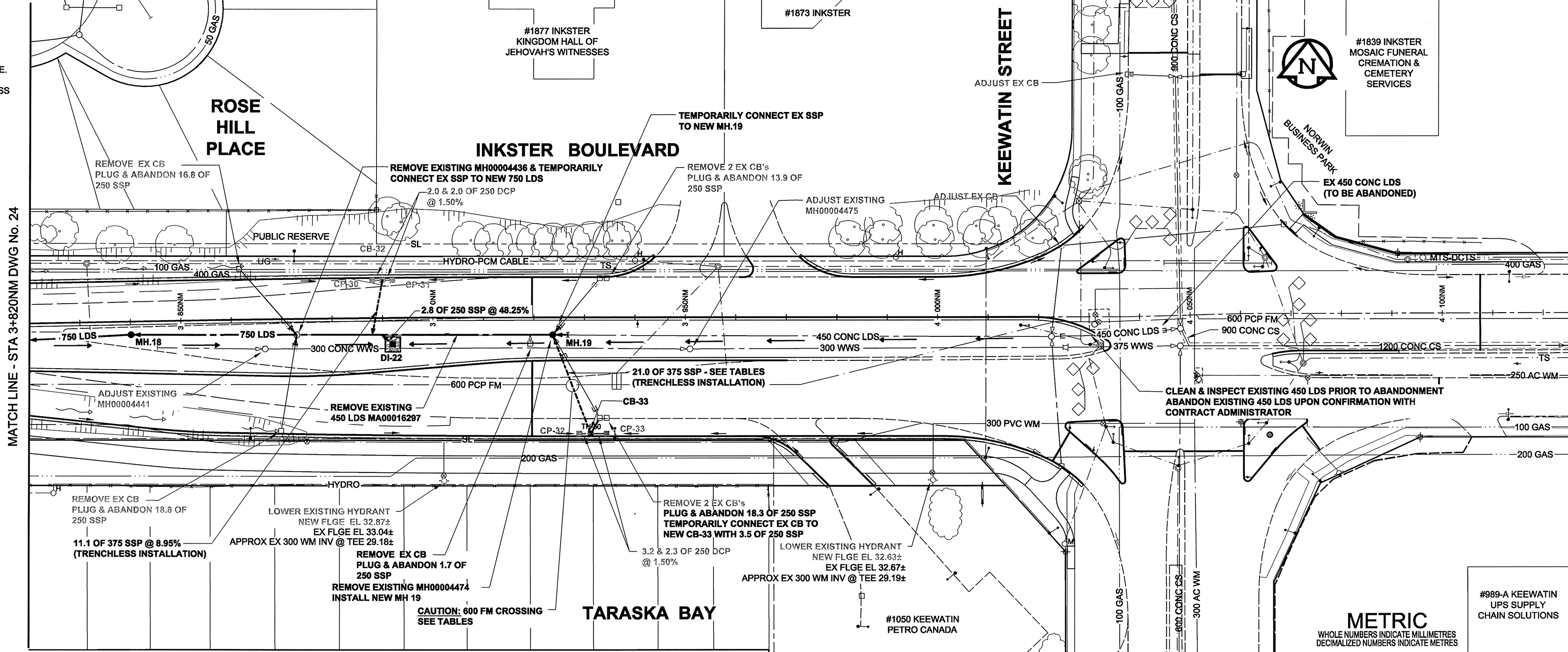


- CHAINAGE ALONG NORTH MEDIAN CONTROL LINE
- GENERAL CONSTRUCTION NOTES:**
1. BACKFILL TO BE CLASS 3 UNLESS NOTED OTHERWISE.
 2. INSTALLATION OF ALL LDS TO BE IN A TRENCH UNLESS OTHERWISE NOTED.
 3. SEE SPECIFICATION FOR DETAILS & RESTRICTIONS WHEN WORKING AROUND EXISTING 600 FEEDERMAIN.
 4. REFER TO STRUCTURE & LOCATION SCHEDULE ON DRAWING 31 FOR FURTHER CATCHBASIN, CATCH PIT, DITCH INLET & MANHOLE DETAILS.
 5. TEMPORARILY PLUG SSP STUBS & BACKFILL AS PER THE DIRECTION OF THE CONTRACT ADMINISTRATOR.
 6. ALL HYDRANT RELOCATIONS ARE TO BE 0.5m SOUTH OF THE FUTURE MULTI-USE PATH.



MATCH LINE - STA 3+820M DWG No. 24

AECOM
Certificate of Authorization
AECOM Canada Ltd.
No. 4671 Date: July 15, 2009

METRIC
WHOLE NUMBERS INDICATE MILLIMETRES
DECIMALIZED NUMBERS INDICATE METRES

#989-A KEEWATIN
UPS SUPPLY
CHAIN SOLUTIONS

150 WM	WATERMAIN	150 WM	50 GAS	150 WM	WATERMAIN	50 GAS	150 WM	50 GAS
○	HYDRANT	○	○	○	HYDRANT	○	○	○
◇	VALVE	◇	◇	◇	VALVE	◇	◇	◇
○	300 LDS	○	○	○	300 LDS	○	○	○
○	250 WWS	○	○	○	250 WWS	○	○	○
○	MANHOLE	○	○	○	MANHOLE	○	○	○
○	CATCH BASIN	○	○	○	CATCH BASIN	○	○	○
○	CURB INLET	○	○	○	CURB INLET	○	○	○
○	CULVERT	○	○	○	CULVERT	○	○	○
○	PIPE ABANDONMENTS	○	○	○	PIPE ABANDONMENTS	○	○	○
○	SURVEY BAR	○	○	○	SURVEY BAR	○	○	○
○	EXISTING	○	○	○	EXISTING	○	○	○
○	LEGEND - PLAN	○	○	○	LEGEND - PLAN	○	○	○
○	NEW	○	○	○	NEW	○	○	○
○	EXISTING	○	○	○	EXISTING	○	○	○
○	LEGEND - PROFILE	○	○	○	LEGEND - PROFILE	○	○	○
○	NEW	○	○	○	NEW	○	○	○

LOCATION APPROVED
UNDERGROUND STRUCTURES

SUPR. U/G STRUCTURES DATE COMMITTEE

NOTE:
LOCATION OF UNDERGROUND STRUCTURES AS SHOWN ARE BASED ON THE BEST INFORMATION AVAILABLE. BUT NO GUARANTEE IS GIVEN THAT ALL EXISTING UTILITIES ARE SHOWN OR THAT THE GIVEN LOCATIONS ARE EXACT. CONFIRMATION OF EXISTENCE AND EXACT LOCATION OF ALL SERVICES MUST BE OBTAINED FROM THE INDIVIDUAL UTILITIES BEFORE PROCEEDING WITH CONSTRUCTION.

NO.	ISSUED FOR CONSTRUCTION	DATE	BY
0	ISSUED FOR CONSTRUCTION	09/07/15	WJD
	REVISIONS	YY/MM/DD	

AECOM

DESIGNED BY: DME
DRAWN BY: WJD
HOR. SCALE: 1:500
VERT. SCALE: 1:50

CHECKED BY: [Signature]
APPROVED BY: [Signature]
RELEASED FOR CONSTRUCTION: [Signature]

DATE: 09/07/15

PROFESSIONAL'S SEAL
PROVINCE OF MANITOBA
A. NAGY
July 15, 2009
REGISTERED PROFESSIONAL ENGINEER

THE CITY OF WINNIPEG
PUBLIC WORKS DEPARTMENT
ENGINEERING DIVISION

**INKSTER BOULEVARD
WIDENING PROJECT
BROOKSIDE BOULEVARD
TO KEEWATIN STREET**

LAND DRAINAGE SYSTEM
STA 3+820 TO KEEWATIN STREET

CITY DRAWING NUMBER: P-3301-25
SHEET 25 OF 31
DRAWING No. 25
REV 0

BID OPPORTUNITY NO. 368-2009