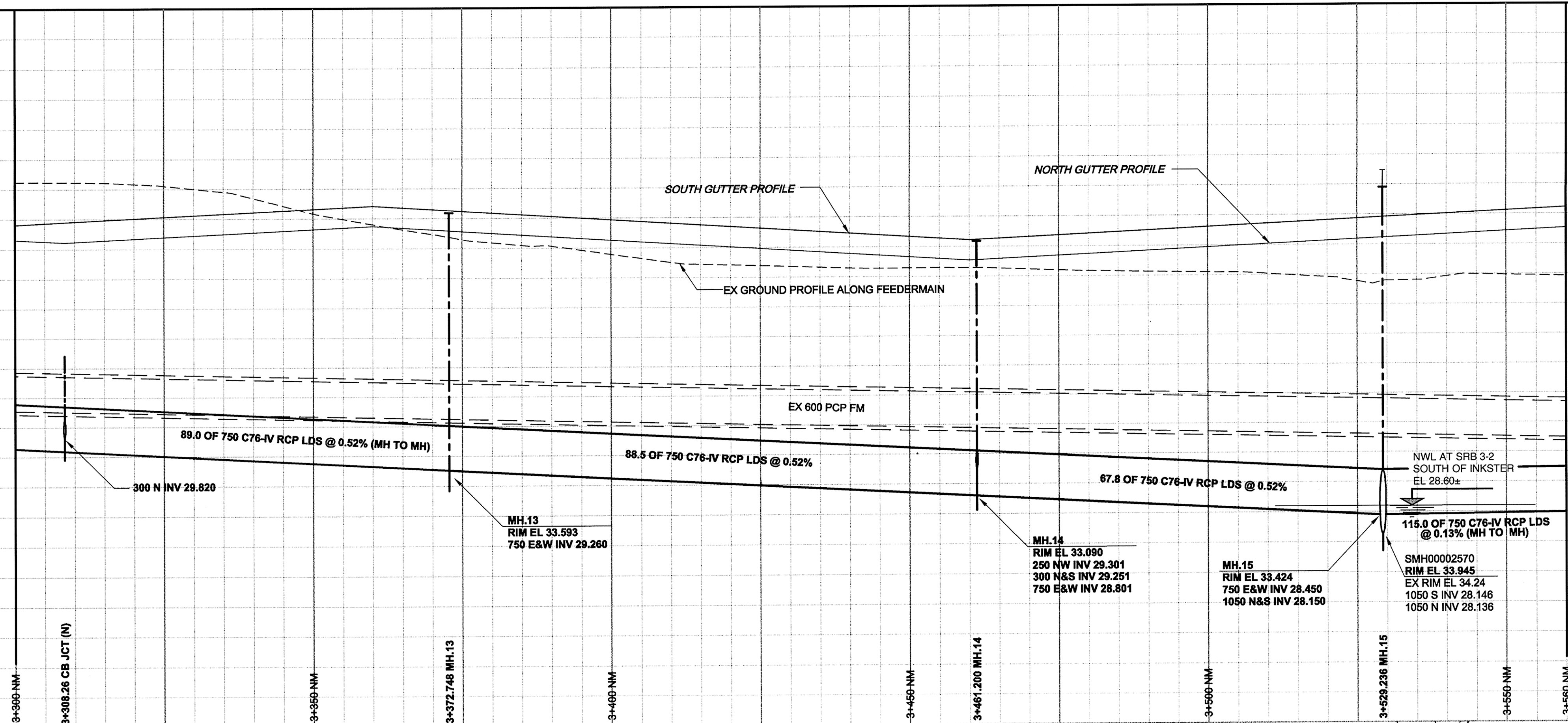
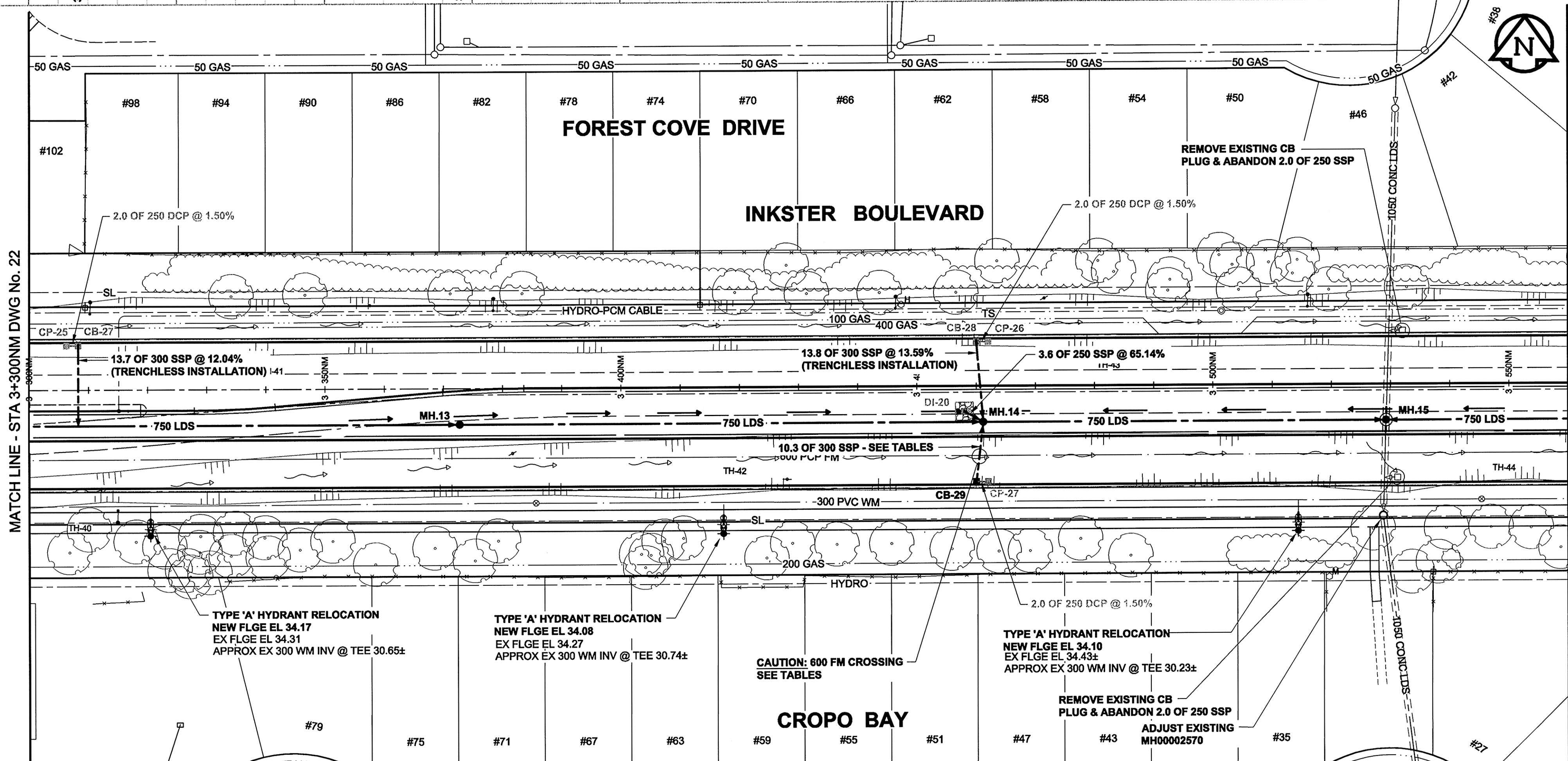


236.0  
235.0  
234.0  
233.0  
232.0  
231.0  
230.0  
229.0  
228.0  
227.0

236.0  
235.0  
234.0  
233.0  
232.0  
231.0  
230.0  
229.0  
228.0  
227.0



CHAINAGE ALONG NORTH MEDIAN CONTROL LINE



GENERAL CONSTRUCTION NOTES:

- BACKFILL TO BE CLASS 3 UNLESS NOTED OTHERWISE.
- INSTALLATION OF ALL LDS TO BE IN A TRENCH UNLESS OTHERWISE NOTED.
- SEE SPECIFICATION FOR DETAILS & RESTRICTIONS WHEN WORKING AROUND EXISTING 600 FEEDERMAIN.
- REFER TO STRUCTURE & LOCATION SCHEDULE ON DRAWING 30 FOR FURTHER CATCHBASIN, CATCH PIT, DITCH INLET & MANHOLE DETAILS.
- TEMPORARILY PLUG SSP STUBS & BACKFILL AS PER THE DIRECTION OF THE CONTRACT ADMINISTRATOR.
- ALL HYDRANT RELOCATIONS ARE TO BE 0.5m SOUTH OF THE FUTURE MULTI-USE PATH.
- SEE DRAWING 26 FOR TYPICAL LDS INSTALLATION TRENCH WHEN THE LDS IS NEAR THE EXISTING 600 FEEDERMAIN.

MATCH LINE - STA 3+300NM DWG No. 22

MATCH LINE - STA 3+560NM DWG No. 24

TYPE 'A' HYDRANT RELOCATION  
NEW FLGE EL 34.17  
EX FLGE EL 34.31  
APPROX EX 300 WM INV @ TEE 30.65±

TYPE 'A' HYDRANT RELOCATION  
NEW FLGE EL 34.08  
EX FLGE EL 34.27  
APPROX EX 300 WM INV @ TEE 30.74±

TYPE 'A' HYDRANT RELOCATION  
NEW FLGE EL 34.10  
EX FLGE EL 34.43±  
APPROX EX 300 WM INV @ TEE 30.23±

CAUTION: 600 FM CROSSING  
SEE TABLES

REMOVE EXISTING CB  
PLUG & ABANDON 2.0 OF 250 SSP  
ADJUST EXISTING  
MH00002570

EXISTING	LEGEND - PLAN	NEW	EXISTING	LEGEND - PLAN	NEW	EXISTING	LEGEND - PROFILE	NEW
150 WM	WATERMAIN	150 WM	REDUCER	REDUCER	150 WM	50 GAS	WATERMAIN	150 WM
HYDRANT	HYDRANT	COUPLING	COUPLING	300 LDS	LAND DRAINAGE SEWER	300 LDS	LAND DRAINAGE SEWER	300 LDS
VALVE	VALVE	ANODE	ANODE	250 WWS	WASTE WATER SEWER	250 WWS	WASTE WATER SEWER	250 WWS
MANHOLE	MANHOLE	MTS	MTS	250 WWS	WASTE WATER SEWER	250 WWS	PAVEMENT CROWN	250 WWS
CATCH BASIN	CATCH BASIN	GAS	GAS				N/W PROPERTY LINE	
CURB INLET	CURB INLET	TESTHOLE	TESTHOLE				S/E PROPERTY LINE	
CULVERT	CULVERT	LAMP STANDARD	LAMP STANDARD				N/W GUTTER	
PIPE ABANDONMENTS	PIPE ABANDONMENTS	TREE	TREE				S/E GUTTER	
SURVEY BAR	SURVEY BAR							

**LOCATION APPROVED UNDERGROUND STRUCTURES**

SUPR. U/G STRUCTURES DATE COMMITTEE

NOTE:  
LOCATION OF UNDERGROUND STRUCTURES AS SHOWN ARE BASED ON THE BEST INFORMATION AVAILABLE. BUT NO GUARANTEE IS GIVEN THAT ALL EXISTING UTILITIES ARE SHOWN OR THAT THE GIVEN LOCATIONS ARE EXACT. CONFIRMATION OF EXISTENCE AND EXACT LOCATION OF ALL SERVICES MUST BE OBTAINED FROM THE INDIVIDUAL UTILITIES BEFORE PROCEEDING WITH CONSTRUCTION.

NO.	ISSUED FOR CONSTRUCTION	DATE	BY
0	ISSUED FOR CONSTRUCTION	09/07/15	WJD
	REVISIONS	YYMMDD	BY

<b>AECOM</b>		DESIGNED BY DME		CHECKED BY [Signature]	
DRAWN BY WJD		APPROVED BY [Signature]		RELEASED FOR CONSTRUCTION	
HOR. SCALE 1:500		VERT. SCALE 1:50		DATE 09/15/15	

PROFESSIONAL'S SEAL  
A. NAGY  
REGISTERED PROFESSIONAL ENGINEER  
CONSULTANT DRAWING NO. 0265-411-00\_01-C-1008\_RX.dwg

**THE CITY OF WINNIPEG**  
PUBLIC WORKS DEPARTMENT  
ENGINEERING DIVISION

**INKSTER BOULEVARD WIDENING PROJECT**  
BROOKSIDE BOULEVARD TO KEEWATIN STREET  
LAND DRAINAGE SYSTEM  
STA 3+300 TO STA 3+560

CITY DRAWING NUMBER P-3301-23  
SHEET 23 OF 31  
DRAWING No. 23  
REV 0

**AECOM**  
Certificate of Authorization  
AECOM Canada Ltd.  
No. 4671 Date: July 15, 2014  
METRIC  
WHOLE NUMBERS INDICATE MILLIMETRES  
DECIMALIZED NUMBERS INDICATE METRES  
BID OPPORTUNITY NO. 368-2009