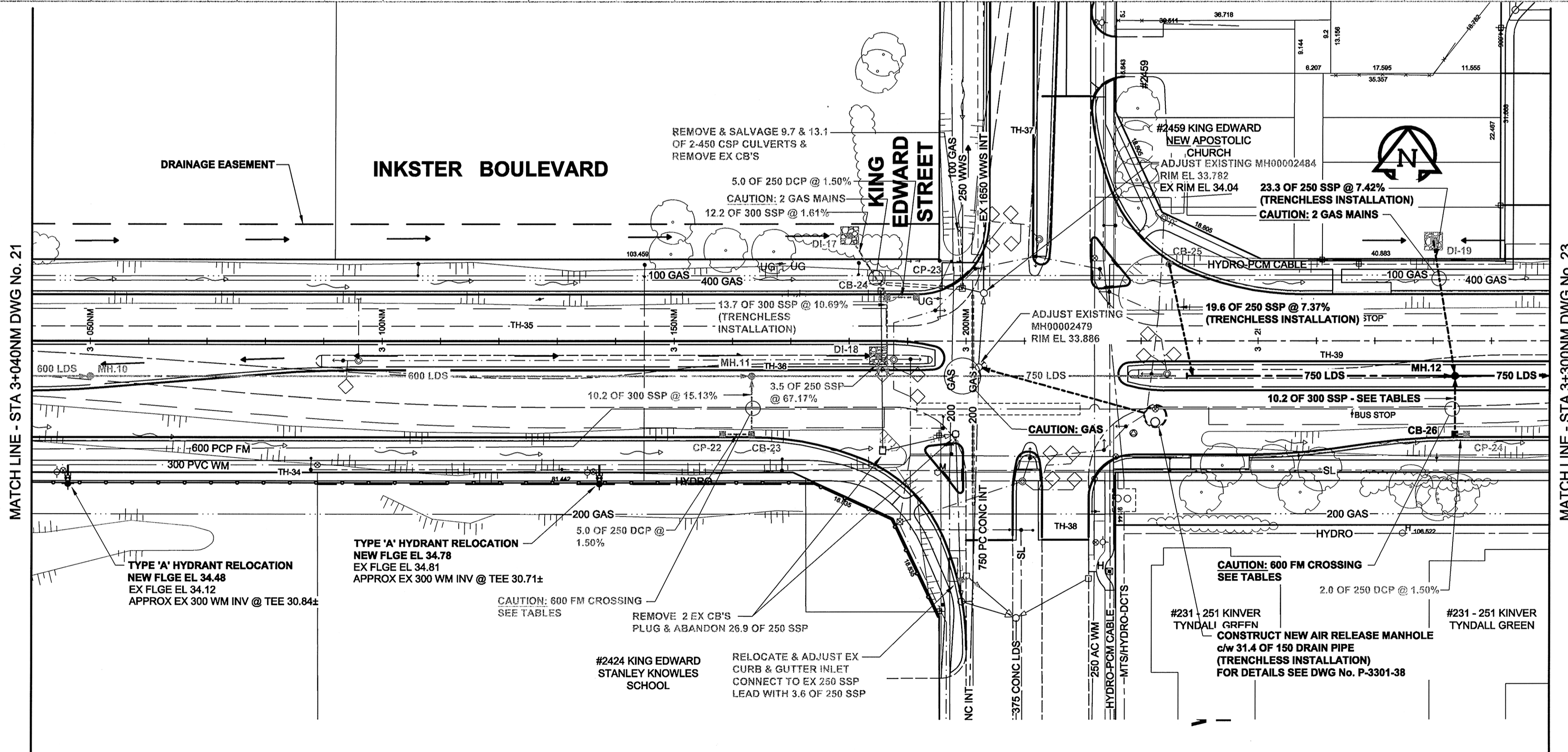


CHAINAGE ALONG NORTH MEDIAN CONTROL LINE



NOTE:
REFER TO DRAWING 14 FOR LAND DRAINAGE SEWER DATA NORTH ON KING EDWARD STREET

- GENERAL CONSTRUCTION NOTES:**
- BACKFILL TO BE CLASS 3 UNLESS NOTED OTHERWISE.
 - INSTALLATION OF ALL LDS TO BE IN A TRENCH UNLESS OTHERWISE NOTED.
 - SEE SPECIFICATION FOR DETAILS & RESTRICTIONS WHEN WORKING AROUND EXISTING 600 FEEDERMAIN.
 - REFER TO STRUCTURE & LOCATION SCHEDULE ON DRAWING 30 FOR FURTHER CATCHBASIN, CATCH PIT, DITCH INLET & MANHOLE DETAILS.
 - TEMPORARILY PLUG SSP STUBS & BACKFILL AS PER THE DIRECTION OF THE CONTRACT ADMINISTRATOR.
 - ALL HYDRANT RELOCATIONS ARE TO BE 0.5m SOUTH OF THE FUTURE MULTI-USE PATH.
 - SEE DRAWING 28 FOR TYPICAL LDS INSTALLATION TRENCH WHEN THE LDS IS NEAR THE EXISTING 600 FEEDERMAIN.



METRIC
WHOLE NUMBERS INDICATE MILLIMETRES
DECIMALIZED NUMBERS INDICATE METRES
BID OPPORTUNITY NO. 368-2009

150 WM	WATERMAIN	150 WM	CURB STOP	150 WM	WATERMAIN	150 WM
HYDRANT	REDUCER	HYDRANT	REDUCER	HYDRANT	HYDRANT	HYDRANT
VALVE	COUPLING	VALVE	COUPLING	VALVE	VALVE	VALVE
300 LDS	LAND DRAINAGE SEWER	300 LDS	ANODE	300 LDS	LAND DRAINAGE SEWER	300 LDS
250 WWS	WASTE WATER SEWER	250 WWS	HYDRO	250 WWS	WASTE WATER SEWER	250 WWS
MANHOLE	MTS	MANHOLE	MTS	MANHOLE	MANHOLE	MANHOLE
CATCH BASIN	GAS	CATCH BASIN	GAS	CATCH BASIN	CATCH BASIN	CATCH BASIN
CURB INLET	TESTHOLE	CURB INLET	TESTHOLE	CURB INLET	CURB INLET	CURB INLET
CULVERT	LAMP STANDARD	CULVERT	LAMP STANDARD	CULVERT	CULVERT	CULVERT
PIPE ABANDONMENTS	TREE	PIPE ABANDONMENTS	TREE	PIPE ABANDONMENTS	PIPE ABANDONMENTS	PIPE ABANDONMENTS
SURVEY BAR		SURVEY BAR		SURVEY BAR	SURVEY BAR	SURVEY BAR
EXISTING	LEGEND - PLAN	NEW	EXISTING	LEGEND - PROFILE	NEW	EXISTING

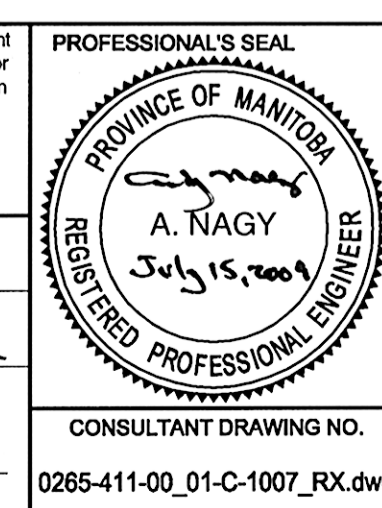
LOCATION APPROVED UNDERGROUND STRUCTURES

SUPR. U/G STRUCTURES DATE COMMITTEE

NOTE:
LOCATION OF UNDERGROUND STRUCTURES AS SHOWN ARE BASED ON THE BEST INFORMATION AVAILABLE. BUT NO GUARANTEE IS GIVEN THAT ALL EXISTING UTILITIES ARE SHOWN OR THAT THE GIVEN LOCATIONS ARE EXACT. CONFIRMATION OF EXISTENCE AND EXACT LOCATION OF ALL SERVICES MUST BE OBTAINED FROM THE INDIVIDUAL UTILITIES BEFORE PROCEEDING WITH CONSTRUCTION.

BM ELEV	
0	ISSUED FOR CONSTRUCTION 09/07/15 WJD
NO.	REVISIONS YYYMDD BY

AECOM	DESIGNED BY DME	CHECKED BY [Signature]
	DRAWN BY WJD	APPROVED BY [Signature]
	HOR. SCALE 1:500	RELEASED FOR CONSTRUCTION [Signature]
	VERT. SCALE 1:50	DATE 09/07/15



THE CITY OF WINNIPEG
PUBLIC WORKS DEPARTMENT
ENGINEERING DIVISION

INKSTER BOULEVARD WIDENING PROJECT
BROOKSIDE BOULEVARD TO KEEWATIN STREET
LAND DRAINAGE SYSTEM
STA 3+040 TO STA 3+300

CITY DRAWING NUMBER P-3301-22
SHEET 22 OF 31
DRAWING No. 22 REV 0

CONSULTANT DRAWING NO. 0265-411-00_01-C-1007_RX.dwg