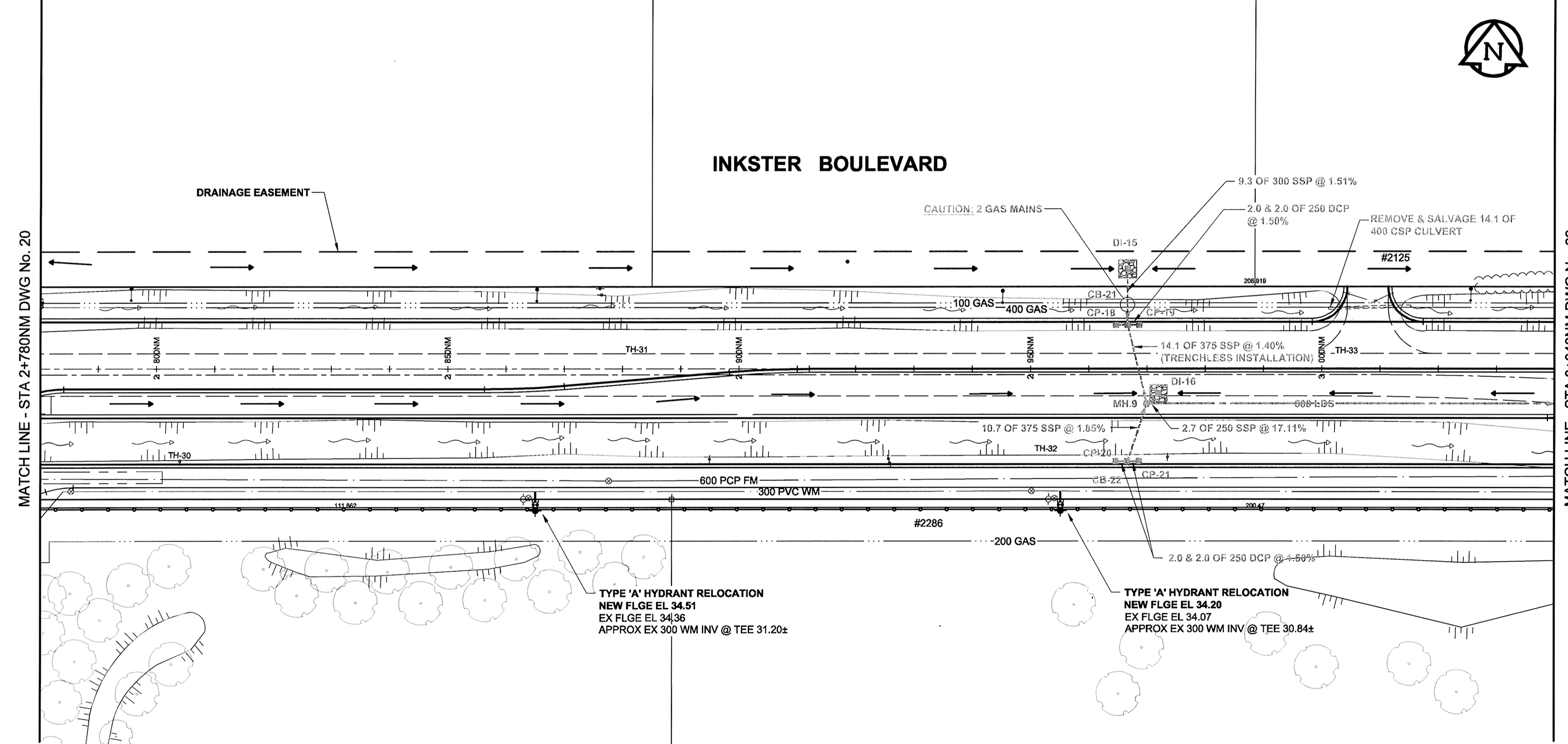


CHAINAGE ALONG NORTH MEDIAN CONTROL LINE



- GENERAL CONSTRUCTION NOTES:**
- BACKFILL TO BE CLASS 3 UNLESS NOTED OTHERWISE.
  - INSTALLATION OF ALL LDS TO BE IN A TRENCH UNLESS OTHERWISE NOTED.
  - SEE SPECIFICATION FOR DETAILS & RESTRICTIONS WHEN WORKING AROUND EXISTING 600 FEEDERMAIN.
  - REFER TO STRUCTURE & LOCATION SCHEDULE ON DRAWING 30 FOR FURTHER CATCHBASIN, CATCH PIT, DITCH INLET & MANHOLE DETAILS.
  - ALL HYDRANT RELOCATIONS ARE TO BE 0.5m SOUTH OF THE FUTURE MULTI-USE PATH.
  - SEE DRAWING 28 FOR TYPICAL LDS INSTALLATION TRENCH WHEN THE LDS IS NEAR THE EXISTING 600 FEEDERMAIN.

|                   |                     |                   |               |                   |                     |                   |                     |
|-------------------|---------------------|-------------------|---------------|-------------------|---------------------|-------------------|---------------------|
| 150 WM            | WATERMAIN           | 150 WM            | CURB STOP     | 150 WM            | WATERMAIN           | 150 WM            | WATERMAIN           |
| Hydrant           | HYDRANT             | Hydrant           | REDUCER       | Hydrant           | HYDRANT             | Hydrant           | HYDRANT             |
| Valve             | VALVE               | Valve             | COUPLING      | Valve             | VALVE               | Valve             | VALVE               |
| 300 LDS           | LAND DRAINAGE SEWER | 300 LDS           | ANODE         | 300 LDS           | LAND DRAINAGE SEWER | 300 LDS           | LAND DRAINAGE SEWER |
| 250 WWS           | WASTE WATER SEWER   | 250 WWS           | HYDRO         | 250 WWS           | WASTE WATER SEWER   | 250 WWS           | WASTE WATER SEWER   |
| Manhole           | MANHOLE             | Manhole           | MTS           | Manhole           | MANHOLE             | Manhole           | MANHOLE             |
| Catch Basin       | CATCH BASIN         | Catch Basin       | GAS           | Catch Basin       | CATCH BASIN         | Catch Basin       | CATCH BASIN         |
| Curb Inlet        | CURB INLET          | Curb Inlet        | TESTHOLE      | Curb Inlet        | CURB INLET          | Curb Inlet        | CURB INLET          |
| Culvert           | CULVERT             | Culvert           | LAMP STANDARD | Culvert           | CULVERT             | Culvert           | CULVERT             |
| Pipe Abandonments | PIPE ABANDONMENTS   | Pipe Abandonments | TREE          | Pipe Abandonments | PIPE ABANDONMENTS   | Pipe Abandonments | PIPE ABANDONMENTS   |
| Survey Bar        | SURVEY BAR          | Survey Bar        |               | Survey Bar        | SURVEY BAR          | Survey Bar        | SURVEY BAR          |
| Existing          | LEGEND - PLAN       | New               | LEGEND - PLAN | Existing          | LEGEND - PROFILE    | New               | LEGEND - PROFILE    |

**LOCATION APPROVED UNDERGROUND STRUCTURES**

SUPR. U/G STRUCTURES DATE COMMITTEE

**NOTE:**  
LOCATION OF UNDERGROUND STRUCTURES AS SHOWN ARE BASED ON THE BEST INFORMATION AVAILABLE, BUT NO GUARANTEE IS GIVEN THAT ALL EXISTING UTILITIES ARE SHOWN OR THAT THE GIVEN LOCATIONS ARE EXACT. CONFIRMATION OF EXISTENCE AND EXACT LOCATION OF ALL SERVICES MUST BE OBTAINED FROM THE INDIVIDUAL UTILITIES BEFORE PROCEEDING WITH CONSTRUCTION.

|         |                         |          |     |
|---------|-------------------------|----------|-----|
| BM ELEV |                         |          |     |
| NO.     | ISSUED FOR CONSTRUCTION | 09/07/15 | WJD |
| NO.     | REVISIONS               | YY/MM/DD | BY  |

|              |       |   |                    |
|--------------|-------|---|--------------------|
| <b>AECOM</b> |       | © 2009 AECOM Canada Ltd. All Rights Reserved. This document is protected by copyright law and may not be used, reproduced or modified in any manner or for any purpose except with the written permission of AECOM Canada Ltd. (AECOM) or a party to which its copyright has been assigned. AECOM accepts no responsibility, and denies any liability whatsoever, to any party that uses, reproduces, modifies, or relies on this document without AECOM's express written consent. |                    |
| DESIGNED BY  | DME   | CHECKED BY  | <i>[Signature]</i> |
| DRAWN BY     | WJD   | APPROVED BY   | <i>[Signature]</i> |
| HOR. SCALE   | 1:500 | RELEASED FOR CONSTRUCTION   | <i>[Signature]</i> |
| VERT. SCALE  | 1:50  | DATE  | 09/07/15           |

PROFESSIONAL'S SEAL

PROVINCE OF MANITOBA

**A. NAGY**

REGISTERED PROFESSIONAL ENGINEER

CONSULTANT DRAWING NO. 0265-411-00\_01-C-1006\_RX.dwg

**THE CITY OF WINNIPEG**

Winnipeg PUBLIC WORKS DEPARTMENT ENGINEERING DIVISION

**INKSTER BOULEVARD WIDENING PROJECT**

**BROOKSIDE BOULEVARD TO KEEWATIN STREET**

LAND DRAINAGE SYSTEM

STA 2+780 TO STA 3+040

CITY DRAWING NUMBER P-3301-21

SHEET 21 OF 31

DRAWING No. 21 REV 0

BID OPPORTUNITY NO. 368-2009