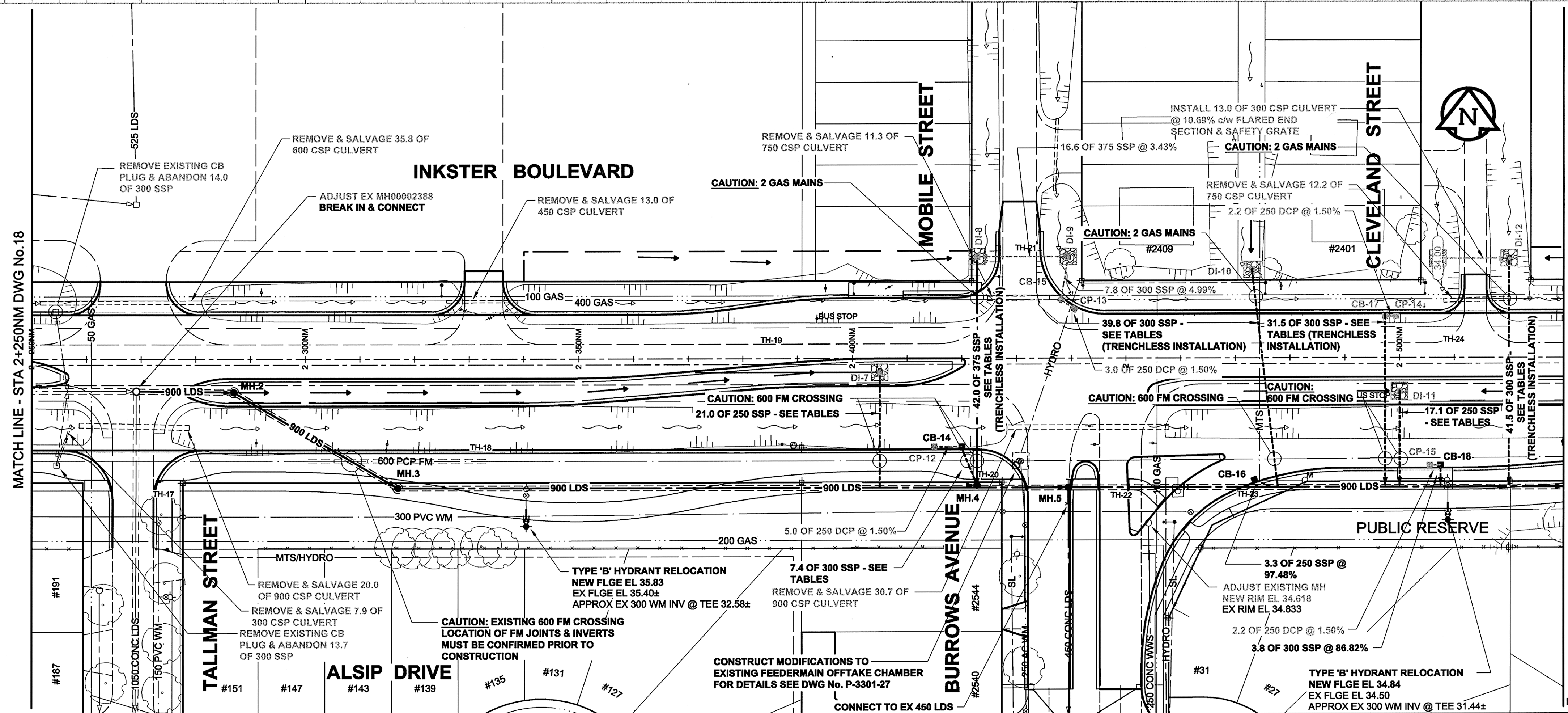


CHAINAGE ALONG NORTH MEDIAN CONTROL LINE



- GENERAL CONSTRUCTION NOTES:**
1. BACKFILL TO BE CLASS 3 UNLESS NOTED OTHERWISE.
  2. INSTALLATION OF ALL LDS TO BE IN A TRENCH UNLESS OTHERWISE NOTED.
  3. SEE SPECIFICATION FOR DETAILS & RESTRICTIONS WHEN WORKING AROUND EXISTING 600 FEEDERMAIN.
  4. REFER TO STRUCTURE & LOCATION SCHEDULE ON DRAWING 29 FOR FURTHER CATCHBASIN, CATCH PIT, DITCH INLET & MANHOLE DETAILS.
  5. TEMPORARILY PLUG SSP STUBS & BACKFILL AS PER THE DIRECTION OF THE CONTRACT ADMINISTRATOR.
  6. ALL HYDRANT RELOCATIONS ARE TO BE 0.5m SOUTH OF THE FUTURE MULTI-USE PATH.
  7. SEE DRAWING 26 FOR TYPICAL LDS INSTALLATION TRENCH WHEN THE LDS IS NEAR THE EXISTING 600 FEEDERMAIN.

150 WM	WATERMAIN	150 WM	CURB STOP
HYDRANT	REDUCER	150 WM	REDUCER
VALVE	COUPLING	150 WM	COUPLING
300 LDS	LAND DRAINAGE SEWER	300 LDS	ANODE
250 WWS	WASTE WATER SEWER	250 WWS	HYDRO
MANHOLE	MTS	250 WWS	MTS
CATCH BASIN	GAS	250 WWS	GAS
CURB INLET	TESTHOLE	250 WWS	TESTHOLE
CULVERT	LAMP STANDARD	250 WWS	LAMP STANDARD
PIPE ABANDONMENTS	TREE	250 WWS	TREE
SURVEY BAR		250 WWS	
EXISTING	LEGEND - PLAN	NEW	LEGEND - PROFILE

150 WM	WATERMAIN	150 WM	WATERMAIN
HYDRANT	HYDRANT	150 WM	HYDRANT
VALVE	VALVE	150 WM	VALVE
300 LDS	LAND DRAINAGE SEWER	300 LDS	LAND DRAINAGE SEWER
250 WWS	WASTE WATER SEWER	250 WWS	WASTE WATER SEWER
MANHOLE	MTS	250 WWS	MTS
CATCH BASIN	GAS	250 WWS	GAS
CURB INLET	TESTHOLE	250 WWS	TESTHOLE
CULVERT	LAMP STANDARD	250 WWS	LAMP STANDARD
PIPE ABANDONMENTS	TREE	250 WWS	TREE
SURVEY BAR		250 WWS	
EXISTING	LEGEND - PLAN	NEW	LEGEND - PROFILE

150 WM	WATERMAIN	150 WM	WATERMAIN
HYDRANT	HYDRANT	150 WM	HYDRANT
VALVE	VALVE	150 WM	VALVE
300 LDS	LAND DRAINAGE SEWER	300 LDS	LAND DRAINAGE SEWER
250 WWS	WASTE WATER SEWER	250 WWS	WASTE WATER SEWER
MANHOLE	MTS	250 WWS	MTS
CATCH BASIN	GAS	250 WWS	GAS
CURB INLET	TESTHOLE	250 WWS	TESTHOLE
CULVERT	LAMP STANDARD	250 WWS	LAMP STANDARD
PIPE ABANDONMENTS	TREE	250 WWS	TREE
SURVEY BAR		250 WWS	
EXISTING	LEGEND - PLAN	NEW	LEGEND - PROFILE

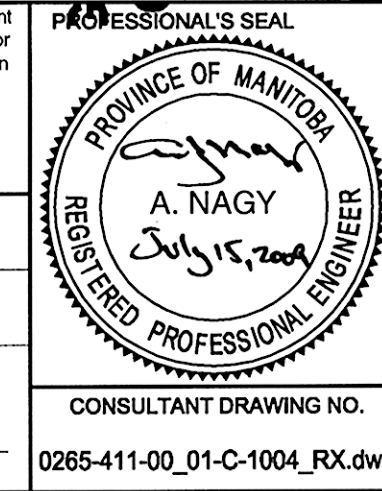
**LOCATION APPROVED UNDERGROUND STRUCTURES**

SUPR. U/G STRUCTURES DATE COMMITTEE

**NOTE:** LOCATION OF UNDERGROUND STRUCTURES AS SHOWN ARE BASED ON THE BEST INFORMATION AVAILABLE. BUT NO GUARANTEE IS GIVEN THAT ALL EXISTING UTILITIES ARE SHOWN OR THAT THE GIVEN LOCATIONS ARE EXACT. CONFIRMATION OF EXISTENCE AND EXACT LOCATION OF ALL SERVICES MUST BE OBTAINED FROM THE INDIVIDUAL UTILITIES BEFORE PROCEEDING WITH CONSTRUCTION.

0	ISSUED FOR CONSTRUCTION	09/07/15	WJD
NO.	REVISIONS	YY/MM/DD	BY

<b>AECOM</b>		<b>PROFESSIONAL'S SEAL</b>	
DESIGNED BY	DME	CHECKED BY	<i>[Signature]</i>
DRAWN BY	WJD	APPROVED BY	<i>[Signature]</i>
HOR. SCALE	1:500	RELEASED FOR CONSTRUCTION	<i>[Signature]</i>
VERT. SCALE	1:50	DATE	July 15, 2015



**THE CITY OF WINNIPEG**  
PUBLIC WORKS DEPARTMENT  
ENGINEERING DIVISION

**INKSTER BOULEVARD WIDENING PROJECT**  
BROOKSIDE BOULEVARD TO KEEWATIN STREET  
LAND DRAINAGE SYSTEM  
STA 2+250 TO STA 2+530

CITY DRAWING NUMBER P-3301-19  
SHEET 19 OF 31  
DRAWING No. 19  
REV 0

© 2009 AECOM Canada Ltd. All Rights Reserved. This document is protected by copyright law and may not be used, reproduced or modified in any manner or for any purpose except with the written permission of AECOM Canada Ltd. (AECOM) or a party to which its copyright has been assigned. AECOM accepts no responsibility, and denies any liability whatsoever, to any party that uses, reproduces, modifies, or relies on this document without AECOM's express written consent.

CONSULTANT DRAWING NO. 0265-411-00-01-C-1004\_RX.dwg

**METRIC**  
WHOLE NUMBERS INDICATE MILLIMETRES  
DECIMALIZED NUMBERS INDICATE METRES

**APEGM**  
Certificate of Authorization  
AECOM Canada Ltd.  
No. 4671 Date: July 15, 2015  
BID OPPORTUNITY NO. 368-2009