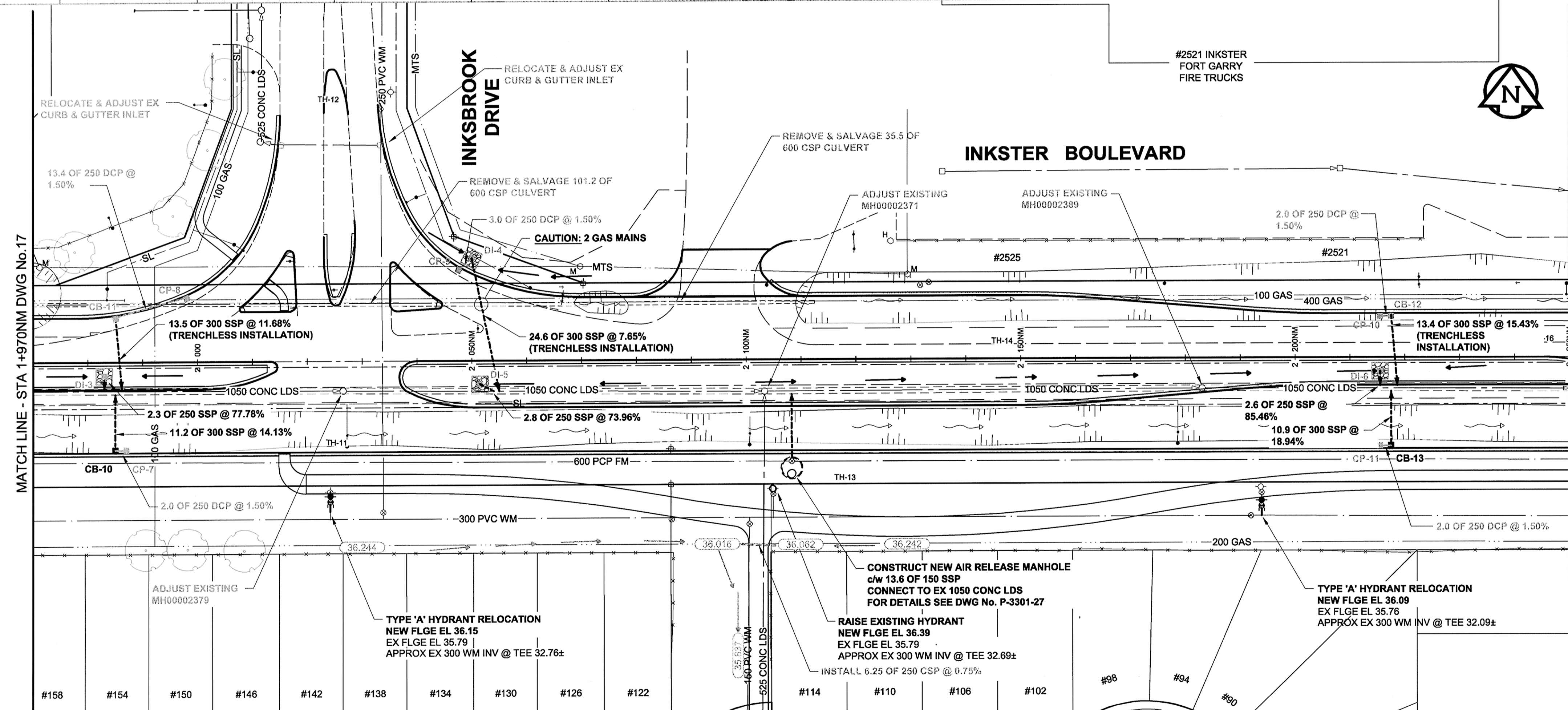


CHAINAGE ALONG NORTH MEDIAN CONTROL LINE



- GENERAL CONSTRUCTION NOTES:**
- BACKFILL TO BE CLASS 3 UNLESS NOTED OTHERWISE.
 - INSTALLATION OF ALL LDS TO BE IN A TRENCH UNLESS OTHERWISE NOTED.
 - SEE SPECIFICATION FOR DETAILS & RESTRICTIONS WHEN WORKING AROUND EXISTING 600 FEEDERMAIN.
 - REFER TO STRUCTURE & LOCATION SCHEDULE ON DRAWING 28 FOR FURTHER CATCHBASIN, CATCH PIT, DITCH INLET & MANHOLE DETAILS.
 - TEMPORARILY PLUG SSP STUBS & BACKFILL AS PER THE DIRECTION OF THE CONTRACT ADMINISTRATOR.
 - ALL HYDRANT RELOCATIONS ARE TO BE 0.5m SOUTH OF THE FUTURE MULTI-USE PATH.

MATCH LINE - STA 1+970NM DWG No.17

MATCH LINE - STA 2+250NM DWG No.19

150 WM	WATERMAIN	150 WM	150 WM	WATERMAIN	150 WM
300 LDS	LAND DRAINAGE SEWER	300 LDS	300 LDS	LAND DRAINAGE SEWER	300 LDS
250 WWS	WASTE WATER SEWER	250 WWS	250 WWS	WASTE WATER SEWER	250 WWS
○	MANHOLE	●	○	MANHOLE	○
□	CATCH BASIN	■	□	CATCH BASIN	□
△	CURB INLET	▲	△	CURB INLET	△
▬	CULVERT	▬	▬	CULVERT	▬
⊕	PIPE ABANDONMENTS	⊕	⊕	PIPE ABANDONMENTS	⊕
+	SURVEY BAR	+	+	SURVEY BAR	+
EXISTING	LEGEND - PLAN	NEW	EXISTING	LEGEND - PROFILE	NEW

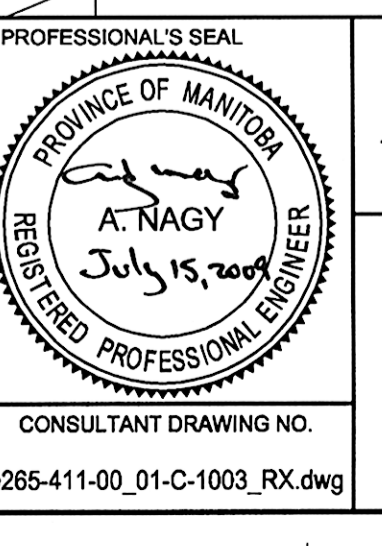
LOCATION APPROVED UNDERGROUND STRUCTURES

150 WM	WATERMAIN	150 WM	WATERMAIN
300 LDS	LAND DRAINAGE SEWER	300 LDS	LAND DRAINAGE SEWER
250 WWS	WASTE WATER SEWER	250 WWS	WASTE WATER SEWER
○	MANHOLE	●	MANHOLE
□	CATCH BASIN	■	CATCH BASIN
△	CURB INLET	▲	CURB INLET
▬	CULVERT	▬	CULVERT
⊕	PIPE ABANDONMENTS	⊕	PIPE ABANDONMENTS
+	SURVEY BAR	+	SURVEY BAR
EXISTING	LEGEND - PLAN	NEW	LEGEND - PROFILE

NOTE: LOCATION OF UNDERGROUND STRUCTURES AS SHOWN ARE BASED ON THE BEST INFORMATION AVAILABLE, BUT NO GUARANTEE IS GIVEN THAT ALL EXISTING UTILITIES ARE SHOWN OR THAT THE GIVEN LOCATIONS ARE EXACT. CONFIRMATION OF EXISTENCE AND EXACT LOCATION OF ALL SERVICES MUST BE OBTAINED FROM THE INDIVIDUAL UTILITIES BEFORE PROCEEDING WITH CONSTRUCTION.

AECOM

DESIGNED BY	DME	CHECKED BY	[Signature]
DRAWN BY	WJD	APPROVED BY	[Signature]
HOR. SCALE	1:500	RELEASED FOR CONSTRUCTION	[Signature]
VERT. SCALE	1:50	DATE	July 15, 2009
ISSUED FOR CONSTRUCTION	08/07/15	BY	WJD
NO. REVISIONS	YYMMDD	BY	



THE CITY OF WINNIPEG
PUBLIC WORKS DEPARTMENT
ENGINEERING DIVISION

INKSTER BOULEVARD WIDENING PROJECT
BROOKSIDE BOULEVARD TO KEEWATIN STREET
LAND DRAINAGE SYSTEM
STA 1+970 TO STA 2+250

CITY DRAWING NUMBER P-3301-18
SHEET 18 OF 31
DRAWING No. 18 REV 0

CONSULTANT DRAWING NO. 0265-411-00_01-C-1003_RX.dwg

AECOM
Certificate of Authorization
AECOM Canada Ltd.
No. 4671 Date: July 15, 2009
METRIC
WHOLE NUMBERS INDICATE MILLIMETRES
DECIMALIZED NUMBERS INDICATE METRES
BID OPPORTUNITY NO. 368-2009