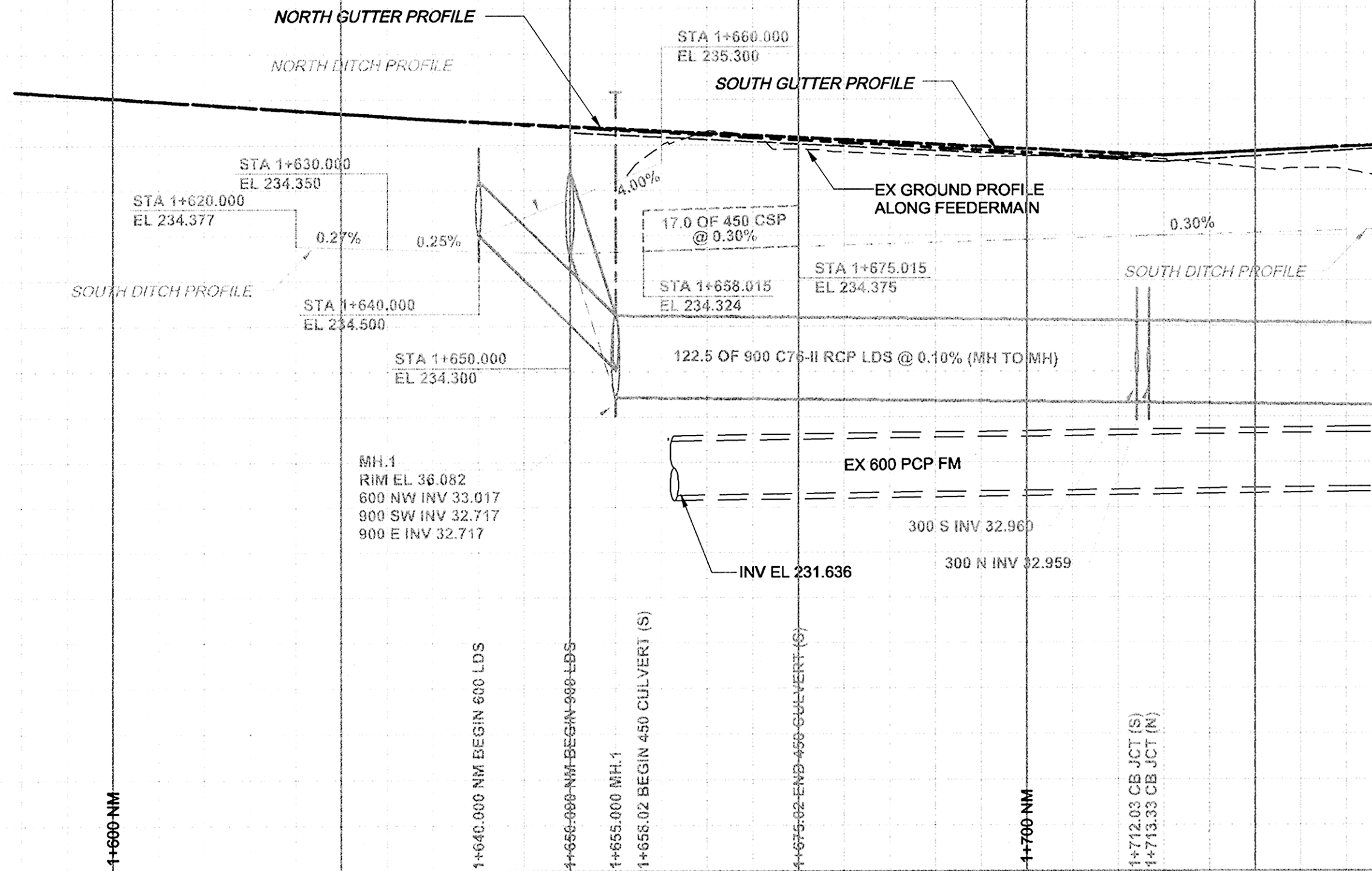
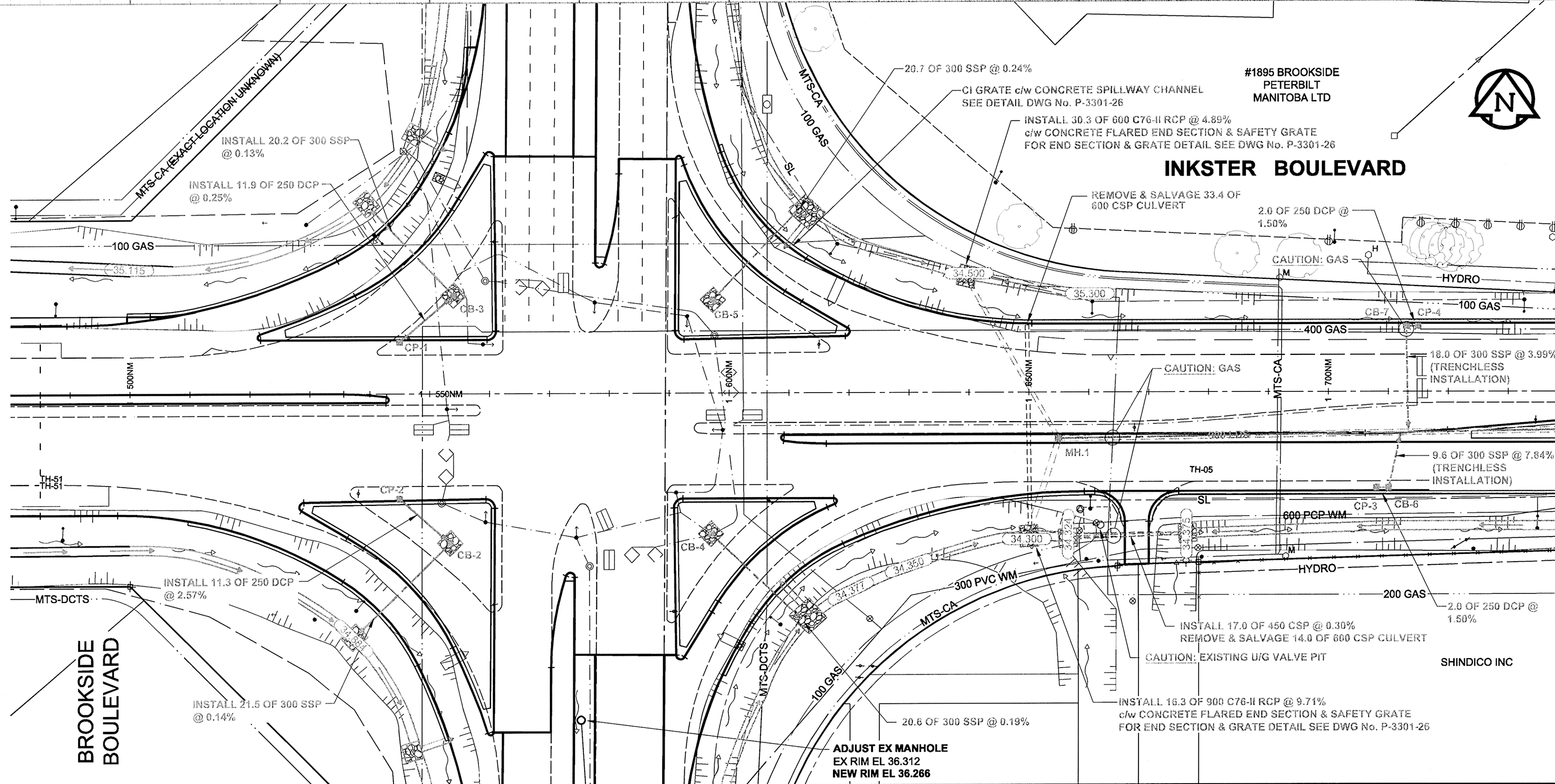


238.0
237.0
236.0
235.0
234.0
233.0
232.0
231.0
230.0

238.0
237.0
236.0
235.0
234.0
233.0
232.0
231.0
230.0



CHAINAGE ALONG NORTH MEDIAN CONTROL LINE



NOTE:
REFER TO DRAWINGS 10, 11, 12 & 13 FOR LAND DRAINAGE SEWER DATA ON BROOKSIDE BOULEVARD

GENERAL CONSTRUCTION NOTES:

- BACKFILL TO BE CLASS 3 UNLESS NOTED OTHERWISE.
- INSTALLATION OF ALL LDS TO BE IN A TRENCH UNLESS OTHERWISE NOTED.
- SEE SPECIFICATION FOR DETAILS & RESTRICTIONS WHEN WORKING AROUND EXISTING 600 FEEDERMAIN.
- REFER TO STRUCTURE & LOCATION SCHEDULE ON DRAWING 28 FOR FURTHER CATCHBASIN, CATCH PIT, DITCH INLET & MANHOLE DETAILS.

MATCH LINE - STA 1+740NM DWG No.17

APEGM
Certificate of Authorization
AECOM Canada Ltd.
No. 4671 Date: July 15, 2009

METRIC
WHOLE NUMBERS INDICATE MILLIMETRES
DECIMALIZED NUMBERS INDICATE METRES

BID OPPORTUNITY NO. 368-2009

| | | | | | | | |
|---------|---------------------|---------|---|---------------|---------|---------------------|---------|
| 150 WM | WATERMAIN | 150 WM | ○ | CURB STOP | 150 WM | WATERMAIN | 150 WM |
| ○ | HYDRANT | ○ | ○ | REDUCER | ○ | HYDRANT | ○ |
| ○ | VALVE | ○ | ○ | COUPLING | ○ | VALVE | ○ |
| 300 LDS | LAND DRAINAGE SEWER | 300 LDS | ○ | ANODE | 300 LDS | LAND DRAINAGE SEWER | 300 LDS |
| 250 WWS | WASTE WATER SEWER | 250 WWS | ○ | HYDRO | 250 WWS | WASTE WATER SEWER | 250 WWS |
| ○ | MANHOLE | ○ | ○ | MTS | ○ | PAVEMENT CROWN | ○ |
| □ | CATCH BASIN | □ | ○ | GAS | ○ | NW PROPERTY LINE | ○ |
| △ | CURB INLET | △ | ○ | TESTHOLE | ○ | S/E PROPERTY LINE | ○ |
| ○ | CULVERT | ○ | ○ | LAMP STANDARD | ○ | N/W GUTTER | ○ |
| ○ | PIPE ABANDONMENTS | ○ | ○ | TREE | ○ | S/E GUTTER | ○ |
| ○ | SURVEY BAR | ○ | ○ | | ○ | | ○ |
| ○ | EXISTING | ○ | ○ | LEGEND - PLAN | ○ | LEGEND - PROFILE | ○ |

LOCATION APPROVED UNDERGROUND STRUCTURES

SUPR. U/G STRUCTURES DATE COMMITTEE

NOTE:
LOCATION OF UNDERGROUND STRUCTURES AS SHOWN ARE BASED ON THE BEST INFORMATION AVAILABLE. BUT NO GUARANTEE IS GIVEN THAT ALL EXISTING UTILITIES ARE SHOWN OR THAT THE GIVEN LOCATIONS ARE EXACT. CONFIRMATION OF EXISTENCE AND EXACT LOCATION OF ALL SERVICES MUST BE OBTAINED FROM THE INDIVIDUAL UTILITIES BEFORE PROCEEDING WITH CONSTRUCTION.

| | | | |
|---------|-------------------------|----------|-----|
| BM ELEV | | | |
| 0 | ISSUED FOR CONSTRUCTION | 08/07/15 | WJD |
| NO. | REVISIONS | YYMMDD | BY |

| | | | |
|------------------------|-------|------------------------------|--------------------|
| AECOM | | PROFESSIONAL'S SEAL | |
| DESIGNED BY | DME | CHECKED BY | <i>[Signature]</i> |
| DRAWN BY | WJD | APPROVED BY | <i>[Signature]</i> |
| HOR. SCALE | 1:500 | RELEASED FOR CONSTRUCTION | <i>[Signature]</i> |
| VERT. SCALE | 1:50 | DATE | July 15, 2009 |
| CONSULTANT DRAWING NO. | | 0285-411-00_01-C-1001_RX.dwg | |

PROFESSIONAL'S SEAL
PROVINCE OF MANITOBA
REGISTERED PROFESSIONAL ENGINEER
A. NAGY
July 15, 2009

THE CITY OF WINNIPEG
PUBLIC WORKS DEPARTMENT
ENGINEERING DIVISION

INKSTER BOULEVARD WIDENING PROJECT
BROOKSIDE BOULEVARD TO KEEWATIN STREET
LAND DRAINAGE SYSTEM
BROOKSIDE BOULEVARD TO STA 1+740

CITY DRAWING NUMBER P-3301-16
SHEET 16 OF 31
DRAWING No. 16
REV 0