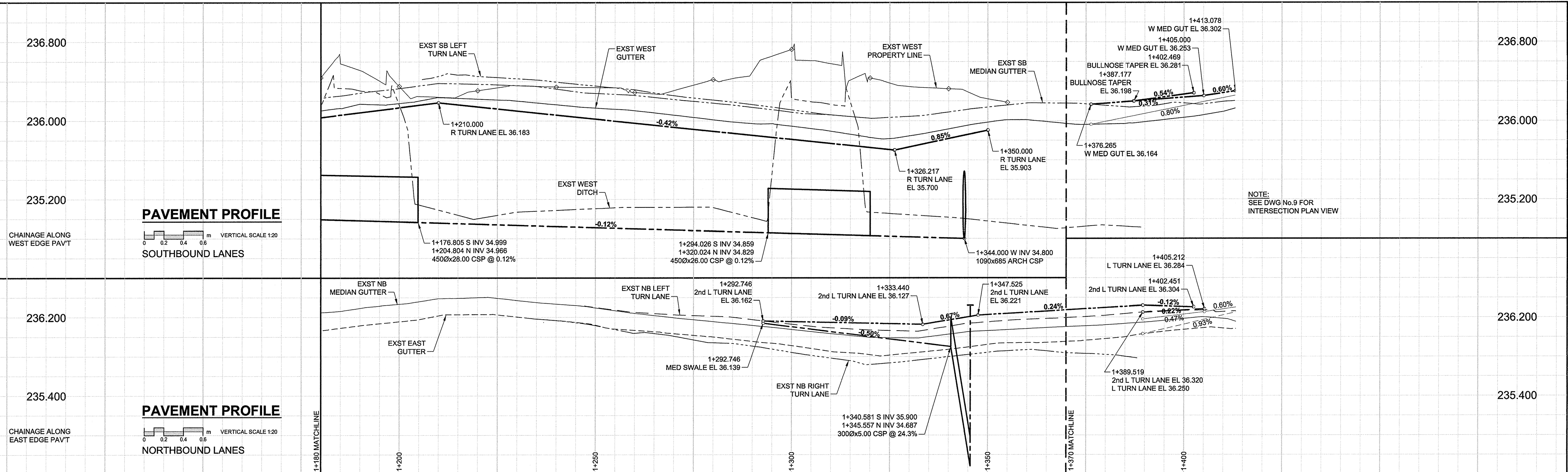


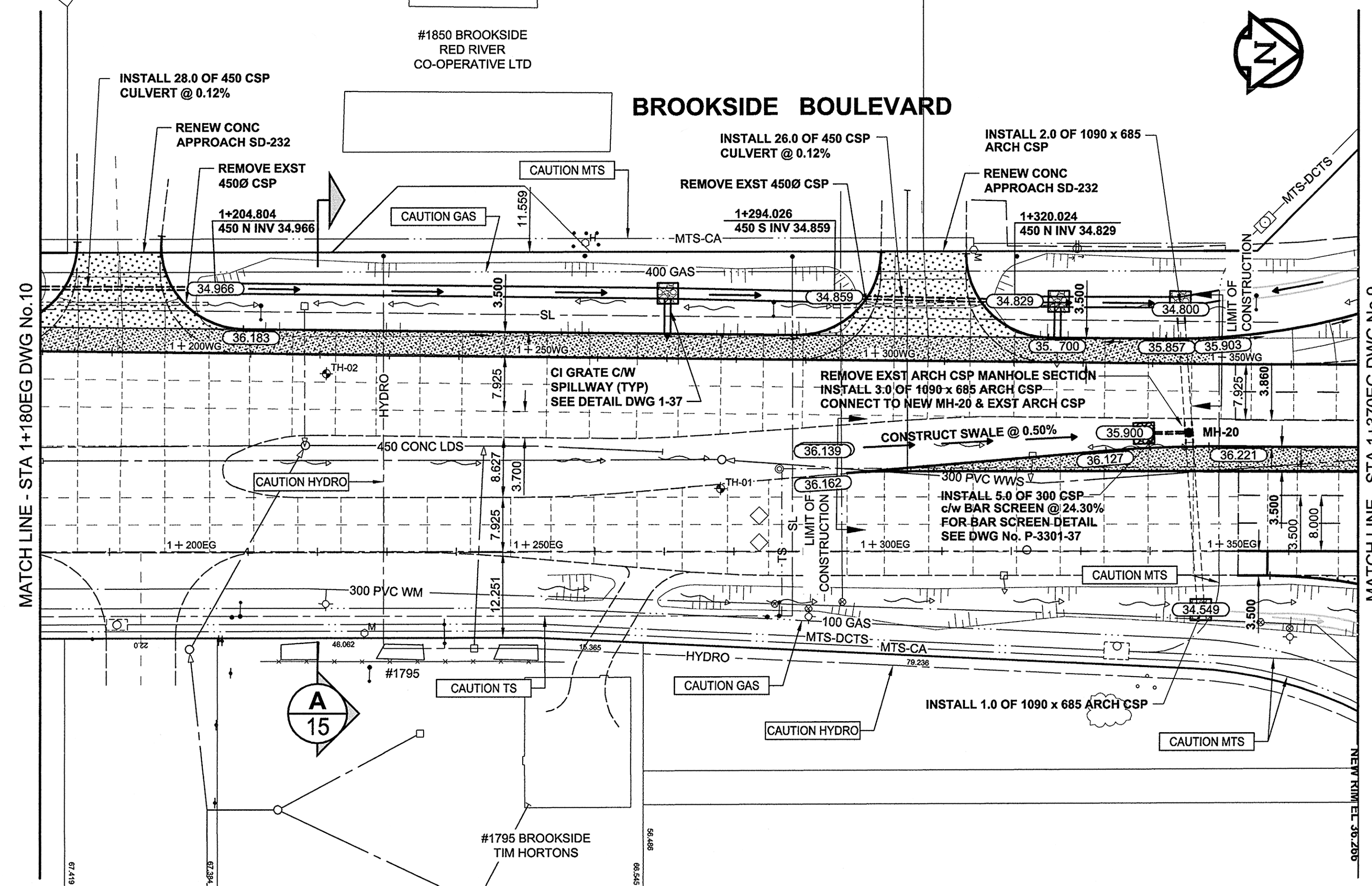
A1 SIZE 23.4" x 33.1" (594mm x 841mm)

PL:CT:09/07/15 9:39:40 AM

AECOM FILE NAME: 0265-411-00-CT1020_RX.dwg Saved By: cooperk1



NOTE:
SEE DWG No.9 FOR
INTERSECTION PLAN VIEW



- NOTES**
1. ADJUST EXST. MH AND CB RIMS TO NEW GRADES AS SHOWN.
 2. LIGHT STANDARDS, HYDRO POLES, AND ANCHORS MAY REQUIRE TEMPORARY SUPPORT/REMOVAL OR REPLACEMENT AT THE EXPENSE OF THE CONTRACTOR. LIGHT STANDARD BASES TO BE PERMANENTLY REMOVED FROM SITE BY CONTRACTOR AT LOCATIONS INDICATED.
 3. CONTRACTOR SHALL TAKE PRECAUTIONARY STEPS TO PROTECT EXISTING BOULEVARD TREES FROM DAMAGE FROM CONSTRUCTION ACTIVITIES WITHIN THE LIMITS OF CONSTRUCTION AS OUTLINED IN THE SPECIFICATIONS.
 4. ADD 200.000m TO ABBREVIATED ELEVATIONS TO OBTAIN GEODETIC ELEVATIONS.
 5. CONTRACTOR SHALL TAKE PRECAUTIONARY STEPS TO CONTROL EROSION BY INSTALLING STRAW WATTLE AT LOCATIONS DIRECTED BY CONTRACT ADMINISTRATOR.

Scale: 0 5 10 15 m H = 1:500

APEGM
Certificate of Authorization
AECOM Canada Ltd.
No. 4671 Date: *July 15/15*

METRIC
WHOLE NUMBERS INDICATE MILLIMETRES
DECIMALIZED NUMBERS INDICATE METRES
BID OPPORTUNITY NO. 368-2009

EXISTING	LEGEND - PLAN	NEW	EXISTING	LEGEND - PLAN	NEW	EXISTING	LEGEND - PLAN	NEW
○	GAS	○	MANHOLE	●	CONCRETE PAVEMENT	□	LOCATION APPROVED UNDERGROUND STRUCTURES	BM REFER TO ELEV DWG 1
□	MTS	□	CATCH BASIN / CATCH PIT	■	ASPHALT PAVEMENT	▲	DATE COMMITTEE	© 2009 AECOM Canada Ltd. All Rights Reserved. This document is protected by copyright law and may not be used, reproduced or modified in any manner or for any purpose except with the written permission of AECOM Canada Ltd. (AECOM) or a party to which its copyright has been assigned. AECOM accepts no responsibility, and denies any liability whatsoever, to any party that uses, reproduces, modifies, or relies on this document without AECOM's express written consent.
△	HYDRO	△	CURB INLET WITH BOX	▲	CONC. SIDEWALK/MEDIAN	■	NOTE: LOCATION OF UNDERGROUND STRUCTURES AS SHOWN ARE BASED ON THE BEST INFORMATION AVAILABLE. BUT NO GUARANTEE IS GIVEN THAT ALL EXISTING UTILITIES ARE SHOWN OR THAT THE GIVEN LOCATIONS ARE EXACT. CONFIRMATION OF EXISTENCE AND EXACT LOCATION OF ALL SERVICES MUST BE OBTAINED FROM THE INDIVIDUAL UTILITIES BEFORE PROCEEDING WITH CONSTRUCTION.	DESIGNED BY WRJ
⊙	CATV/FO	⊙	TREE	▲	PAVING STONE	■		CHECKED BY RPB
⊙	TRAFFIC SIGNALS/PIT	⊙	TEST HOLE	▲	GRAVEL	■		APPROVED BY TGS
⊙	LAND DRAINAGE SEWER	⊙	PROPERTY LINE	▲	RAMP CURB	■		RELEASER FOR CONSTRUCTION
⊙	SANITARY/COMBINED SEWER	⊙	SURVEY BAR	▲	PLANING/REMOVAL	■		DATE <i>July 15/15</i>
⊙	SSP/DCP	⊙	FENCE	▲		■		CONSULTANT DRAWING NO. 0265-411-00_03-CT1020_RX.dwg
⊙	WATERMAIN	⊙	BOC/EOPAVT	▲		■		
⊙	SUBDRAIN	⊙	ELEVATION	▲		■		
⊙	DITCH	⊙	TRAFFIC SIGN	▲		■		
⊙		⊙		▲		■		

NO.	REVISIONS	DATE	BY
0	ISSUED FOR CONSTRUCTION	09/07/15	DID

AECOM

DESIGNED BY WRJ
DRAWN BY DID/KLC
HOR. SCALE 1:500
VERT. SCALE 1:20
DATE 09/07/15

CHECKED BY RPB
APPROVED BY TGS
RELEASER FOR CONSTRUCTION
DATE *July 15/15*

PROFESSIONAL'S SEAL
PROVINCE OF MANITOBA
REGISTERED PROFESSIONAL ENGINEER
R.P. BRUCE
CONSULTANT DRAWING NO. 0265-411-00_03-CT1020_RX.dwg

THE CITY OF WINNIPEG
PUBLIC WORKS DEPARTMENT
ENGINEERING DIVISION

INKSTER BOULEVARD WIDENING PROJECT
BROOKSIDE BOULEVARD TO KEEWATIN STREET
HORIZONTAL AND VERTICAL ALIGNMENT
BROOKSIDE BLVD STA 1+180EG TO STA 1+370EG

CITY DRAWING NUMBER P-3301-11
SHEET 11 OF 31
DRAWING No. 11 REV 0