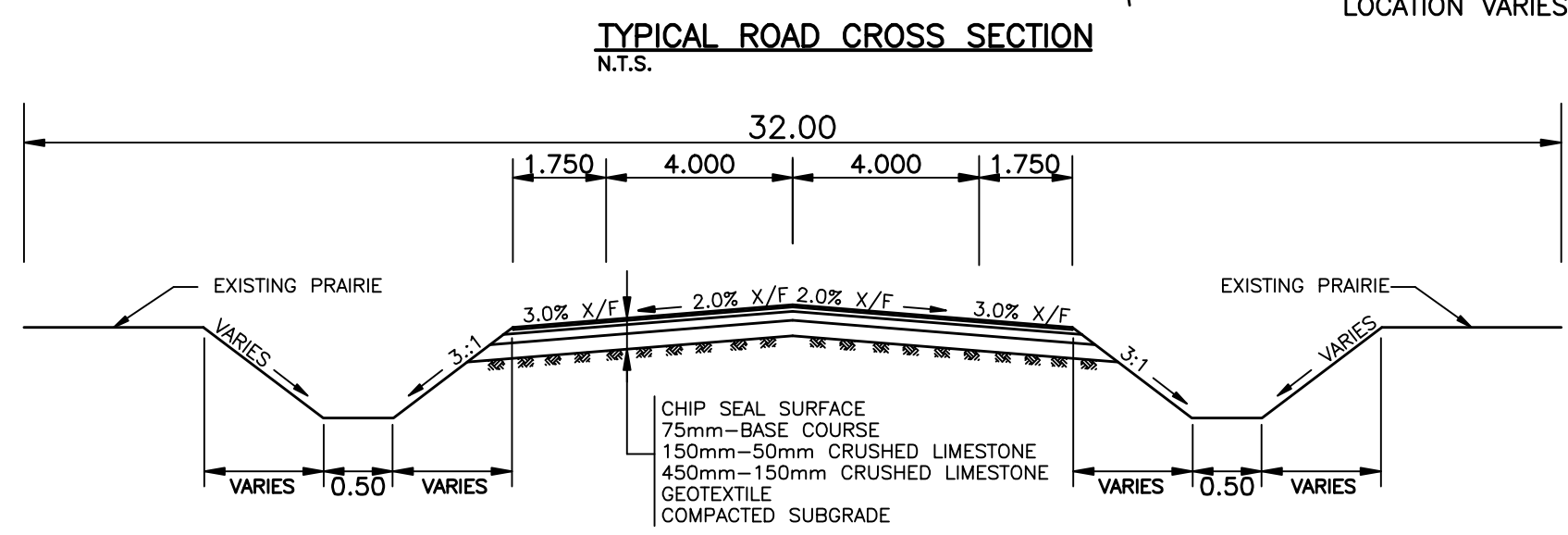
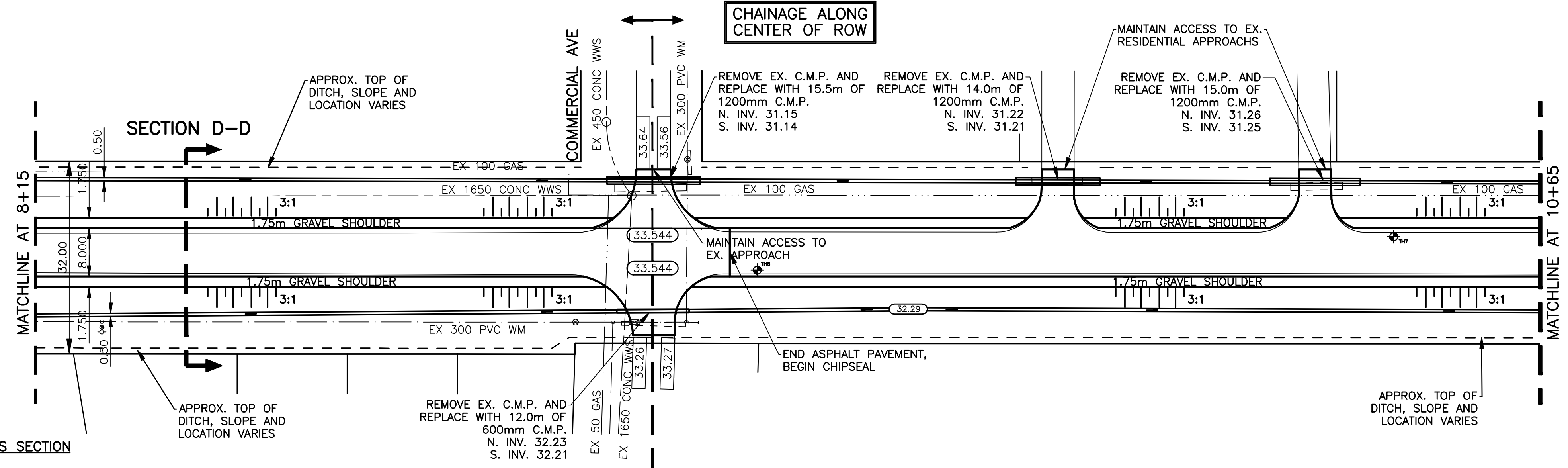


- NOTES:**
1. REGRADE EXISTING DITCHES AS DIRECTED BY CONTRACT ADMINISTRATOR
  2. RENEW EXISTING APPROACHES AS DIRECTED BY CONTRACT ADMINISTRATOR
  3. RENEW EXISTING CURBS AND SIDEWALKS AS DIRECTED BY CONTRACT ADMINISTRATOR
  4. REPAIR EXISTING PAVEMENT AS DIRECTED BY CONTRACT ADMINISTRATOR



**KING EDWARD STREET**

**BENCHMARK:**  
 N.E. COR. KING EDWARD ST. & JEFFERSON AVE., BRASS PLUG  
 PLUG IN 7.6m PILE, 2.6m E. OF HYDRO TRANSMISSION LINE  
 ON E. SIDE OF KING EDWARD ST. & 2.3m S. OF LINE OF WOODEN  
 POLES ON N. SIDE OF JEFFERSON AVE.

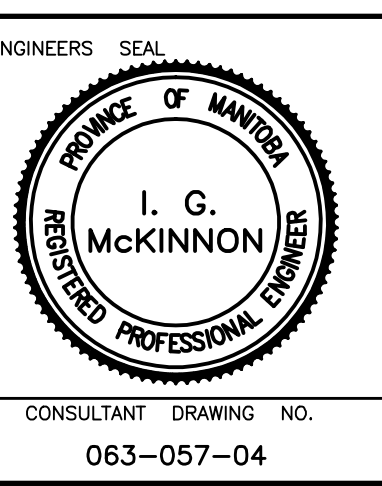
**METRIC**  
 WHOLE NUMBERS INDICATE MILLIMETRES  
 DECIMALIZED NUMBERS INDICATE METRES

	WATERMAIN		HYDRO		CENTER LINE
	HYDRANT VALVE		M.T.S.		EAST GUTTER LINE
	LAND DRAINAGE SEWER		GRAVEL/CHIP SEAL		WEST GUTTER LINE
	WASTE WATER SEWER		ASPHALT		EAST DITCH
	MANHOLE		PROPERTY LINE		WEST DITCH
	CATCH BASIN		C.B. LEAD		WASTE WATER SEWER
	MTS		CULVERT		LAND DRAINAGE SEWER
	TRAFFIC SIGNAL		DITCH BOTTOM		WATERMAIN
	STEAM HT.		DITCH TOP		GAS
	GAS		ELEVATIONS		GATEVALVE TESTHOLE
EXISTING	LEGEND - PLAN	PROPOSED	EXISTING	LEGEND - PROFILE	PROPOSED

LOCATION APPROVED		B.M. ELEV.	CMBM: 04-011 233.064
SUPPLY, U/G STRUCTURES	DATE		
NOTE: LOCATION OF UNDERGROUND STRUCTURES AS SHOWN ARE BASED ON THE BEST INFORMATION AVAILABLE BUT NO GUARANTEE IS GIVEN THAT ALL EXISTING UTILITIES ARE SHOWN OR THAT THE GIVEN LOCATIONS ARE EXACT. CONFIRMATION OF EXISTENCE AND EXACT LOCATION OF ALL SERVICES MUST BE OBTAINED FROM THE INDIVIDUAL UTILITIES BEFORE PROCEEDING WITH CONSTRUCTION.			
NO.	REVISIONS	DATE	BY

**GENIVAR**  
 10 Prairie Way, WINNIPEG, MANITOBA, R2J 3J8  
 PH: (204)-477-6850 FAX: (204)-474-2854

DESIGNED BY: R.H. CHECKED BY: S.M.  
 DRAWN BY: R.H. APPROVED BY: I.McK  
 HOR. SCALE: 1:500  
 VERT. SCALE: 1:50  
 DATE: APRIL 2009



**THE CITY OF WINNIPEG**  
 PUBLIC WORKS DEPARTMENT

2009 GRANULAR ROAD IMPROVEMENTS AND MAJOR PAVEMENT REHABILITATION  
 KING EDWARD STREET  
 FROM MATCHLINE AT STATION 8+15 TO MATCHLINE AT STATION 10+65

CITY DRAWING NO. 367-2009  
 SHEET 4 OF 6  
 APRIL 2009