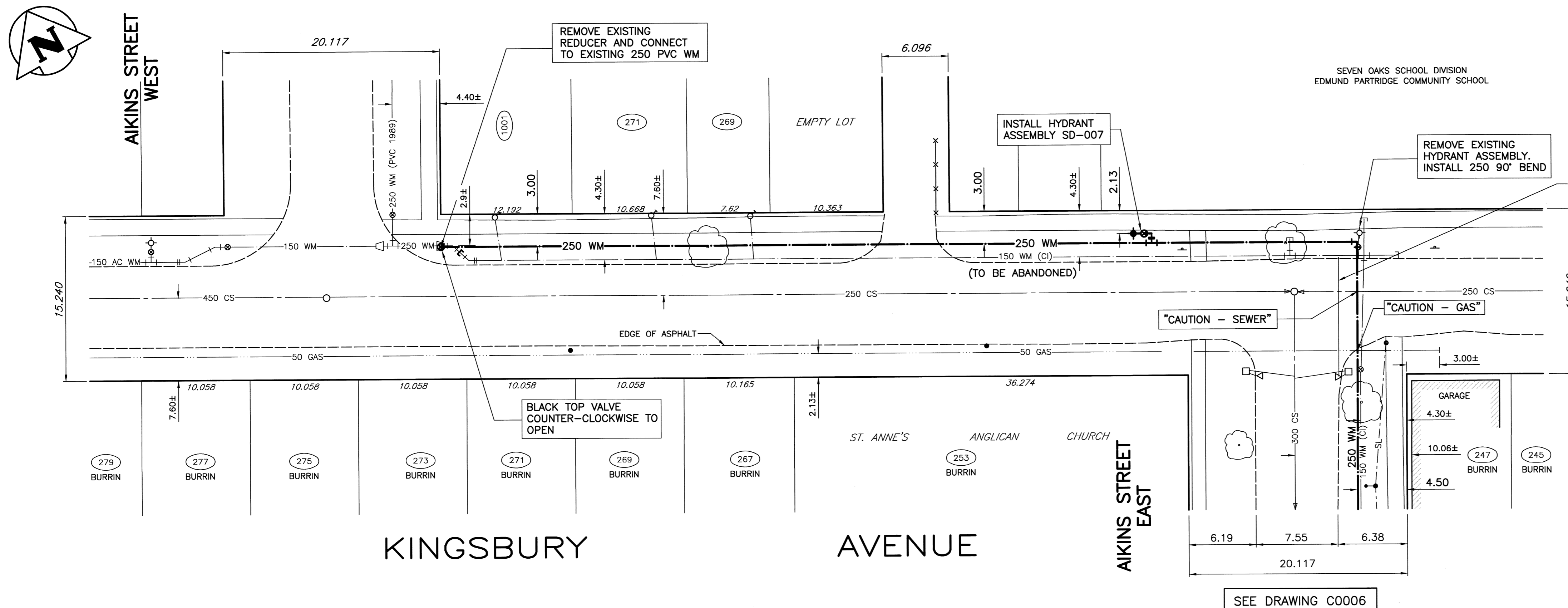


NOTE:

KINGSBURY AVENUE FROM STATION 1+95.50 EXTENDING EAST IS PART OF 2009 PAVEMENT RENEWAL PROJECT. FINAL SURFACE RESTORATION OF PAVEMENTS, BOULEVARDS, AND SIDEWALKS EXCAVATED FOR WATERMAIN CONSTRUCTION IN THIS PORTION OF KINGSBURY AVENUE WILL BE CARRIED OUT BY THE PAVEMENT RENEWAL CONTRACTOR.

HOUSE NO.	SIZE & TYPE	DISTANCE TO PL.	STOP COCK LOCATION		CORPORATION COCK LOCATION	COMMENTS
			SHORT	LONG		
269 KINGSBURY	20 COP	0.30	1.53m WEL OF HOUSE	28.65m EEL AIKINS	0.30m E OF S/C	
271 KINGSBURY	?	0.18	3.11m EWL OF HOUSE	19.51m EEL AIKINS	0.46m E OF S/C	
1001 AIKINS ST	20 COP	UNK	2.45m EWL OF HOUSE	5.03m EEL AIKINS	0.61m E OF S/C	



CONSTRUCTION NOTES

1. WATERMAIN TO HAVE 2.5m COVER FROM CENTRELINE OF ROAD.
2. ALL CURB REPLACEMENT TO MATCH EXISTING CURB.
3. ALL EXISTING WATERMANS AT CONNECTION LOCATIONS ARE TO HAVE INVERTS VERIFIED PRIOR TO CONSTRUCTION.
4. INSTALL ALL HYDRANTS WITH FLANGE ELEVATION FROM 50mm TO 150mm ABOVE FINISHED GRADE.
5. SALVAGE ALL EXISTING HYDRANT ASSEMBLIES AND VALVES WHEN DIRECTED BY THE CONTRACT ADMINISTRATOR AND RETURN TO THE CITY YARD. ABANDON THE REMAINING VALVES (AND/OR VALVE BOXES) AND HYDRANT ASSEMBLIES.
6. INSTALL WATERMAIN BY TRENCHLESS METHODS UNDER ALL PAVEMENTS, TREES, LIGHT STANDARDS, AND OTHER APPURTENANCES.
7. RENEW ALL LEAD WATER CONNECTIONS UP TO THE PROPERTY LINE WITH 20mm COPPER WATER CONNECTIONS UNLESS RENEWAL SIZE IS OTHERWISE NOTED.
8. ALL VALVES SHALL TURN COUNTER CLOCKWISE TO OPEN WITH BLACK OPERATING NUT.
9. ALL BACKFILL UNDER PAVEMENT SHALL BE CLASS 3.
10. ALL BACKFILL UNDER BOULEVARD SHALL BE CLASS 5.
11. ABANDON SERVICES NO LONGER IN USE WHERE DIRECTED BY CONTRACT ADMINISTRATOR.
12. CONTRACTOR TO NOTIFY BUSINESSES AND RESIDENTS A MINIMUM OF 24 HOURS PRIOR TO ANY DISRUPTION TO WATER SERVICE.

GENERAL NOTES

1. CHAINAGE IS ALONG CENTRE LINE OF KINGSBURY RIGHT-OF-WAY.

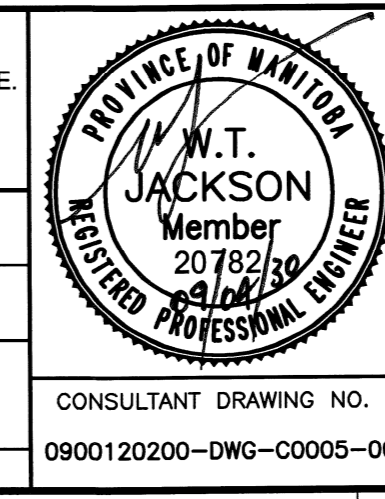


SYMBOL	DESCRIPTION	PROPOSED	EXISTING	LEGEND-PLAN	PROPOSED	EXISTING	LEGEND-PLAN	PROPOSED
150 WM	WATERMAIN	---	---	---	---	---	---	---
400 FM	FEEDERMAIN	---	---	---	---	---	---	---
300 LDS	LAND DRAINAGE SEWER	---	---	---	---	---	---	---
250 WWS	WASTEWATER SEWER	---	---	---	---	---	---	---
300 CS	COMBINED SEWER	---	---	---	---	---	---	---
200 FCM	FORCEMAIN	---	---	---	---	---	---	---
REDUCER	REDUCER	---	---	---	---	---	---	---
HYDRANT	HYDRANT	---	---	---	---	---	---	---
VALVE	VALVE	---	---	---	---	---	---	---
BEND	BEND	---	---	---	---	---	---	---
EXISTING	LEGEND-PLAN	PROPOSED	EXISTING	LEGEND-PLAN	PROPOSED	EXISTING	LEGEND-PLAN	PROPOSED

SYMBOL	DESCRIPTION	PROPOSED	EXISTING	LEGEND-PLAN	PROPOSED	EXISTING	LEGEND-PLAN	PROPOSED
TEE	TEE	---	---	---	---	---	---	---
CURB STOP	CURB STOP	---	---	---	---	---	---	---
PLUG	PLUG	---	---	---	---	---	---	---
MANHOLE	MANHOLE	---	---	---	---	---	---	---
CATCHBASIN	CATCHBASIN	---	---	---	---	---	---	---
CURB INLET	CURB INLET	---	---	---	---	---	---	---
ZINC ANODE	ZINC ANODE	---	---	---	---	---	---	---
HYDRO POLE	HYDRO POLE	---	---	---	---	---	---	---
LIGHT STANDARD	LIGHT STANDARD	---	---	---	---	---	---	---
ANCHOR	ANCHOR	---	---	---	---	---	---	---
PROPOSED	LEGEND-PLAN	PROPOSED	EXISTING	LEGEND-PLAN	PROPOSED	EXISTING	LEGEND-PLAN	PROPOSED

NO.	REVISIONS	DATE	BY
A	ISSUED FOR TENDER	09.04.30	WTJ
00	ISSUED FOR APPROVAL	09.04.15	

DESIGNED BY	CHECKED BY
GWC	WTJ
DRAWN BY	APPROVED BY
NL	CS
HOR. SCALE:	VERTICAL:
1 : 250	1 : 50
DATE	DATE
09.04.15	09.04.15



THE CITY OF WINNIPEG
WATER AND WASTE DEPARTMENT

2009 - WATERMAIN RENEWALS, CONTRACT 6

CITY DRAWING NUMBER: D-11788
SHEET: 5 OF 6

C0005

CONSULTANT DRAWING NO. 0900120200-DWG-C0005-00